



How to change pollen
filter on **INFINITI G**
Coupe – replacement
guide

SIMILAR VIDEO TUTORIAL



This video shows the replacement procedure of a similar car part on another vehicle

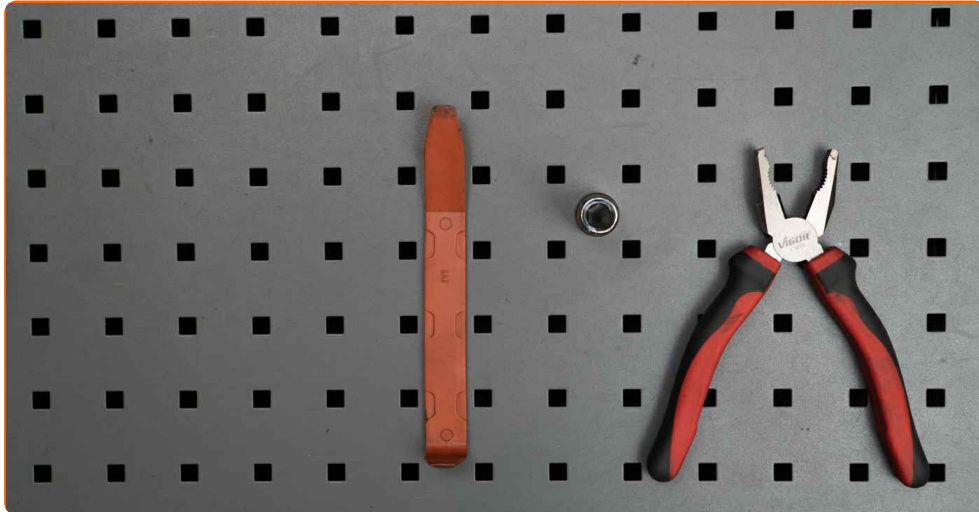
Important!

This replacement procedure can be used for:
INFINITI G Coupe 3.5, INFINITI G Coupe 3.5 X

The steps may slightly vary depending on the car design.

This tutorial was created based on the replacement procedure for a similar car part on: NISSAN X-TRAIL (T30) 2.5 4x4

REPLACEMENT: POLLEN FILTER – INFINITI G COUPE.
TOOLS YOU MIGHT NEED:



- Torx bit T20
- Plastic trim tool
- Pliers

Buy tools

Replacement: pollen filter – INFINITI G Coupe. Tip from AUTODOC experts:

- Replace the cabin filter at least once every six months, in early spring and autumn seasons.
- Follow the terms, recommendations and requirements of the part operation provided by the manufacturer.
- If the air flow into the cabin has sharply reduced, replace the filter before a scheduled maintenance.
- Please note: all work on the car – INFINITI G Coupe – should be done with the engine switched off.

CARRY OUT REPLACEMENT IN THE FOLLOWING ORDER:

1 Open the glove box.



2 Remove the glove box stoppers. Use a plastic trim tool.



3 Remove the glove box.



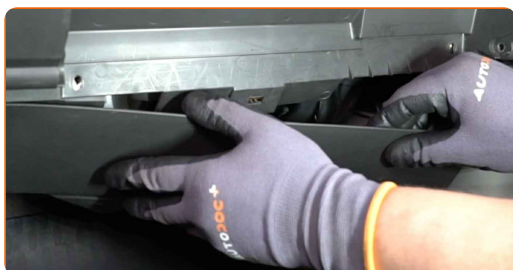
4 Unscrew the fasteners on the rear panel of the glove box. Use Torx T20.



5 Detach the fasteners connecting the relay to the rear panel. Use pliers.



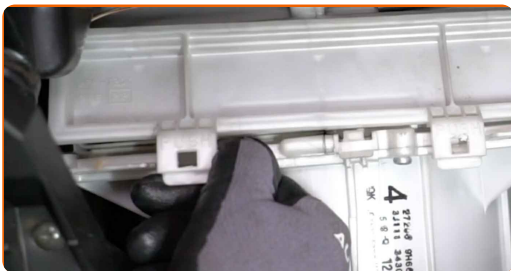
6 Remove the lower part of the rear panel.



7 Remove the rear panel of the glove box.



8 Unclip the cabin filter cover retainers.



9 Remove the cabin filter housing cover.



10 Remove the cabin filter.



Replacement: pollen filter – INFINITI G Coupe. AUTODOC recommends:

- Do not attempt to clean and reuse the filter - it will affect the quality of air cleaning inside the car.

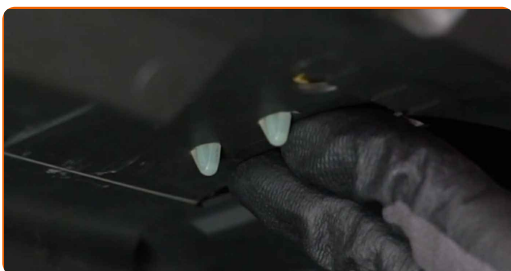
11 Install a new cabin filter according to the air flow direction mark.



12 Reinstall the cabin filter housing cover. Make sure you hear a click indicating that it is locked in place.



13 Attach the fasteners connecting the relay to the rear panel.



14 Install the rear panel of the glove box.



15 Install the lower part of the rear panel.



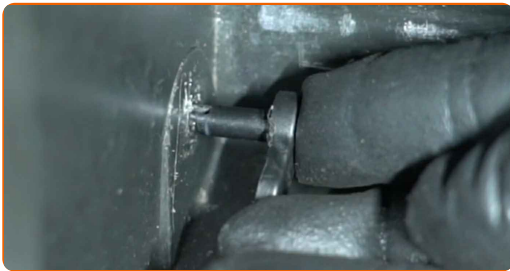
16 Screw in the fasteners on the rear panel of the glove box. Use Torx T20.



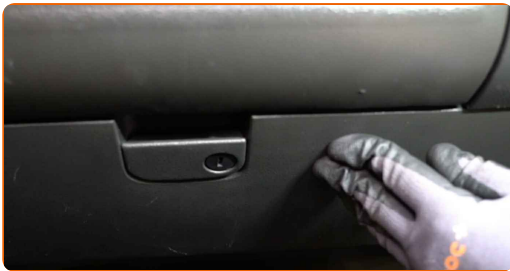
17 Install the glove box.



18 Install the glove box stoppers.



19 Close the glove box.



20 Switch on the ignition.

21 Switch on the air conditioning system. This is necessary in order to make sure that the component operates properly.

22 Switch off the ignition.

WELL DONE! 

VIEW MORE TUTORIALS

AUTODOC – TOP QUALITY AND AFFORDABLE CAR PARTS ONLINE

AUTODOC MOBILE APP: GREAT DEALS AND CONVENIENT SHOPPING



+ AUTODOC

GET IT ON
 **Google Play**

 **Download on the App Store**

Download

A GREAT SELECTION OF SPARE PARTS FOR YOUR CAR

POLLEN FILTER: A WIDE SELECTION

DISCLAIMER:

The document contains only general recommendations that may be useful for you when you perform repair or replacement work. AUTODOC shall not be liable for any loss, injury, damage of property occurring in the repair or replacement process due to incorrect use or misinterpretation of the provided information.

AUTODOC shall not be liable for any possible mistakes and uncertainties in this guide. The information provided is for information purposes only and cannot replace advice from specialists.

AUTODOC shall not be liable for incorrect or hazardous usage of equipment, tools and car parts. AUTODOC strongly recommends to be careful and observe the safety rules when performing repair or replacement works. Remember: usage of low quality auto parts does not guarantee you the appropriate level of road safety.

© Copyright 2023 – All the contents of this website, in particular texts, photographs and graphics, are protected by copyright. All rights, including reproduction, publication, editing and translation rights, are reserved by AUTODOC SE.