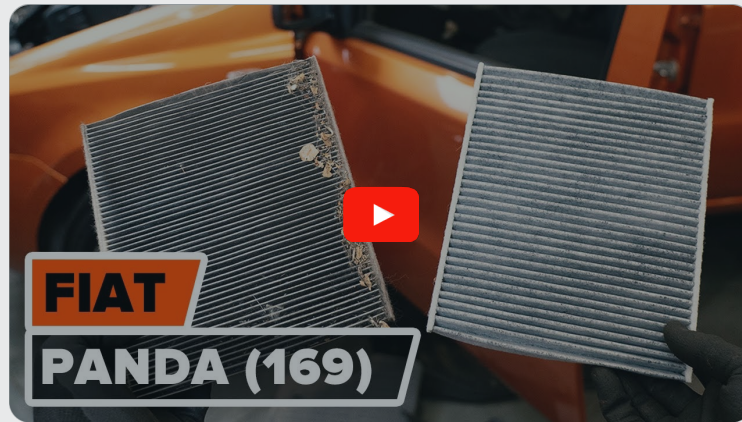




How to change pollen
filter on **Fiat Panda 169** –
replacement guide

VIDEO TUTORIAL



Important!

This replacement procedure can be used for:

FIAT PANDA (169) 1.2, FIAT PANDA (169) 1.4 Natural Power, FIAT PANDA (169) 1.3 D Multijet 4x4, FIAT 500 C Convertible (312) 0.9, FIAT PANDA (169) 1.2 4x4, FIAT 500 Hatchback (312) 0.9, FIAT PANDA (169) 1.2 LPG, FIAT 500 Hatchback (312) 1.2 LPG, FIAT PANDA (169) 1.1, FIAT PANDA (169) 1.3 D Multijet, FIAT PANDA (169) 1.4, FIAT 500 Hatchback (312) 1.2, FIAT 500 Hatchback (312) 1.4, FIAT 500 Hatchback (312) 1.3 D Multijet, FIAT PANDA (169) 1.2 Natural Power, (+ 4)

The steps may slightly vary depending on the car design.

REPLACEMENT: POLLEN FILTER – FIAT PANDA 169.
TOOLS YOU'LL NEED:



• Ratchet wrench

• Phillips screwdriver

BUY TOOLS

Replacement: pollen filter – Fiat Panda 169. AUTODOC recommends:

- Replace the cabin filter at least once every six months, in early spring and autumn seasons.
- Follow the terms, recommendations and requirements of the part operation provided by the manufacturer.
- If the air flow into the cabin has sharply reduced, replace the filter before a scheduled maintenance.
- Please note: all work on the car – Fiat Panda 169 – should be done with the engine switched off.

CARRY OUT REPLACEMENT IN THE FOLLOWING ORDER:

1 Move the passenger seat fully backwards.

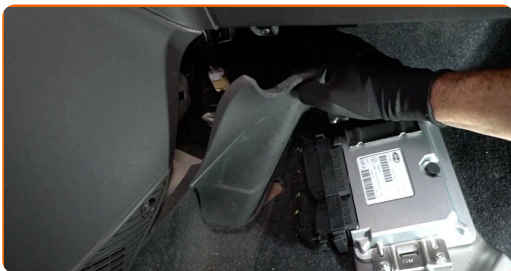
2 Unscrew the footrest fastener. Use a Phillips screwdriver. Use a ratchet wrench.



3 Remove the footrest.



4 Remove the side plastic cover.



5 Unscrew the fasteners of the cabin filter housing cover. Use a Phillips screwdriver. Use a ratchet wrench.



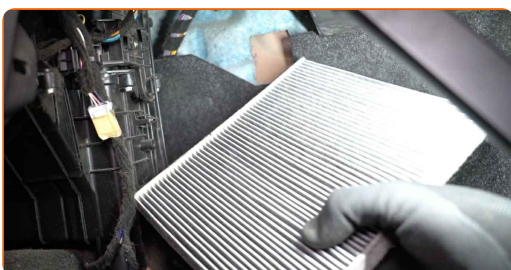
6 Remove the cabin filter housing cover.



AUTODOC recommends:

- Replacement: pollen filter – Fiat Panda 169. Do not use excessive force when removing the part as this may damage it.

7 Remove the cabin filter.

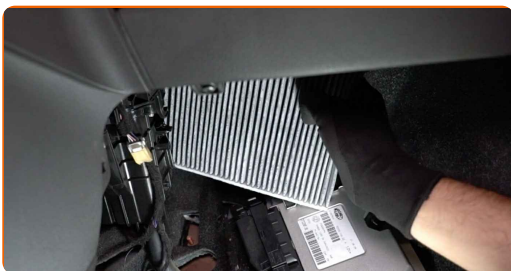


Replacement: pollen filter – Fiat Panda 169. Tip:

- Do not attempt to clean and reuse the filter - it will affect the quality of air cleaning inside the car.

8

Install the cabin filter to its mounting seat.

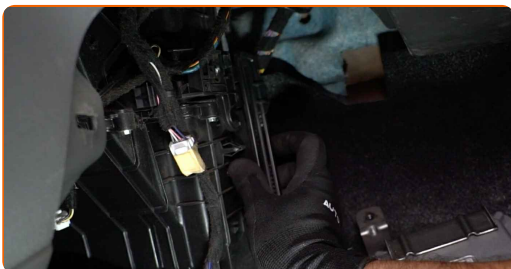


AUTODOC recommends:

- Replacement: pollen filter – Fiat Panda 169. Be sure to position the filtering element correctly. Avoid misalignment.
- Follow the air flow direction arrow on the filter.
- Take care to only use quality filters.

9

Reinstall the cabin filter housing cover. Make sure you hear a click indicating that it is locked in place.



10

Screw in the fasteners of the cabin filter housing cover. Use a Phillips screwdriver. Use a ratchet wrench.

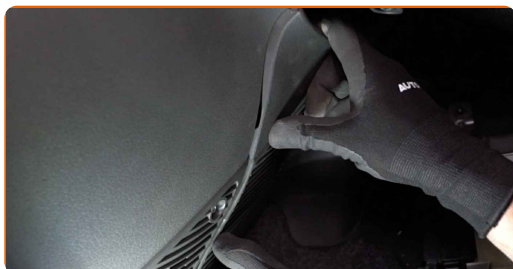


AUTODOC recommends:

- Replacement: pollen filter – Fiat Panda 169. Do not use excessive force during installation. This may damage the fasteners.

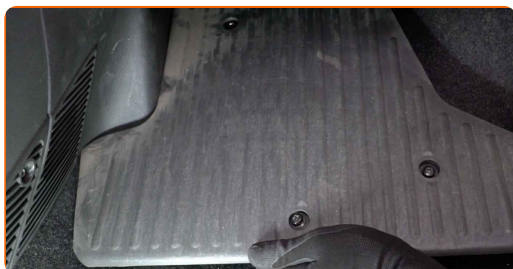
11

Install the side plastic panel.



12

Reinstall the footrest.



13 Screw in the footrest fastener. Use a Phillips screwdriver. Use a ratchet wrench.



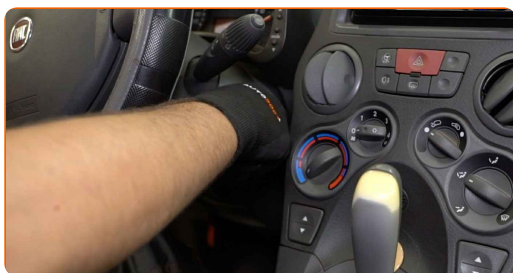
14 Return the passenger seat to its initial position.

15 Switch on the ignition.

16 Switch on the air conditioning system. This is necessary in order to make sure that the component operates properly.



17 Switch off the ignition.



WELL DONE! 

VIEW MORE TUTORIALS

AUTODOC – TOP QUALITY AND AFFORDABLE CAR PARTS ONLINE

AUTODOC MOBILE APP: GREAT DEALS AND CONVENIENT SHOPPING



+ AUTODOC

GET IT ON  **Google Play**

 **Download on the App Store**

Download

A GREAT SELECTION OF SPARE PARTS FOR YOUR CAR

BUY SPARE PARTS FOR FIAT

POLLEN FILTER: A WIDE SELECTION

CHOOSE CAR PARTS FOR FIAT PANDA 169

POLLEN FILTER FOR FIAT: BUY NOW

POLLEN FILTER FOR FIAT PANDA 169: THE BEST DEALS & OFFERS

DISCLAIMER:

The document contains only general recommendations that may be useful for you when you perform repair or replacement work. AUTODOC shall not be liable for any loss, injury, damage of property occurring in the repair or replacement process due to incorrect use or misinterpretation of the provided information.

AUTODOC shall not be liable for any possible mistakes and uncertainties in this guide. The information provided is for information purposes only and cannot replace advice from specialists.

AUTODOC shall not be liable for incorrect or hazardous usage of equipment, tools and car parts. AUTODOC strongly recommends to be careful and observe the safety rules when performing repair or replacement works. Remember: usage of low quality auto parts does not guarantee you the appropriate level of road safety.

© Copyright 2023 – All the contents of this website, in particular texts, photographs and graphics, are protected by copyright. All rights, including reproduction, publication, editing and translation rights, are reserved by AUTODOC SE.