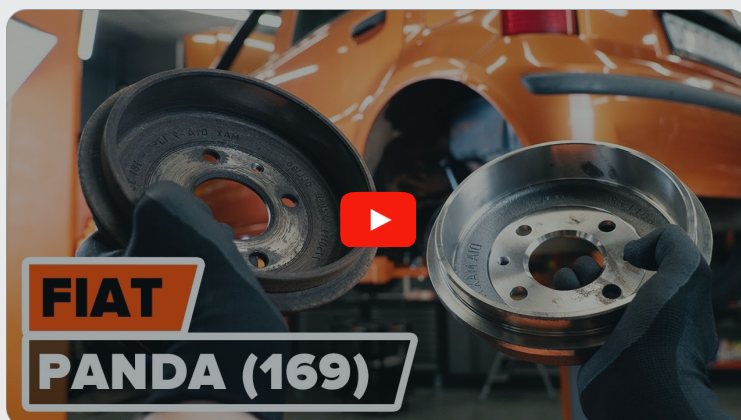




How to change brake
drum on **Fiat Panda 169**
– replacement guide

VIDEO TUTORIAL

** Important!**

This replacement procedure can be used for:

FIAT PANDA (169) 1.2, FIAT PANDA (169) 1.4 Natural Power, FIAT 500 C Convertible (312) 0.9, FIAT 500 Hatchback (312) 0.9, FIAT PUNTO (176) 1.1 55, FIAT PUNTO (176) 1.2 60, FIAT PUNTO (176) 1.2 75, FIAT PUNTO (176) 1.7 TD, FIAT PUNTO Convertible (176C) 1.2 60, FIAT PUNTO Convertible (176C) 1.6 90, FIAT PUNTO (176) 1.6, FIAT BRAVO I (182) 1.9 TD 100 S, FIAT BRAVO I (182) 1.9 TD 75 S, FIAT GRANDE PUNTO (199) 1.3 D Multijet, FIAT PUNTO Van (176L) 1.1, (+ 34)

The steps may slightly vary depending on the car design.

REPLACEMENT: BRAKE DRUM – FIAT PANDA 169.
TOOLS YOU'LL NEED:



- Wire brush
- WD-40 spray
- Copper grease
- Torque wrench
- Drive socket # 10
- Drive socket # 12
- Combination spanner #10
- Wheel impact socket #17
- Ratchet wrench
- Flat Screwdriver
- Wheel chock

BUY TOOLS

Replacement: brake drum – Fiat Panda 169. AUTODOC recommends:

- Replace the brake drums on Fiat Panda 169 in pair for the rear axle. Disregarding the parts state. It ensures even braking.
- The replacement procedure is identical for the right and left brake drums on the same axle.
- When replacing the brake drums, be sure to also change the brake shoes.
- All work should be done with the engine stopped.

REPLACEMENT: BRAKE DRUM – FIAT PANDA 169. RECOMMENDED SEQUENCE OF STEPS:

1 Open the hood. Unscrew the brake fluid reservoir cap.



2 Secure the wheels with chocks.

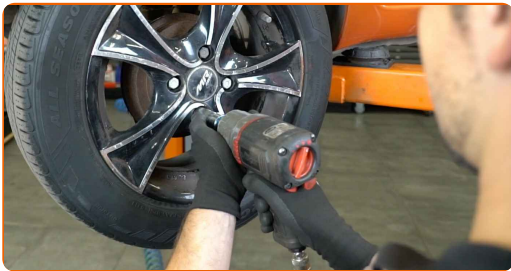
3 Loosen the wheel mounting bolts. Use wheel impact socket #17.



4 Raise the rear of the car and secure on supports.



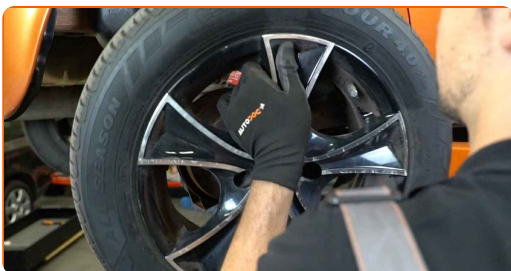
5 Unscrew the wheel bolts.



AUTODOC recommends:

- Warning! To avoid injury, hold the wheel while unscrewing the fastening bolts.
Fiat Panda 169

6 Remove the wheel.

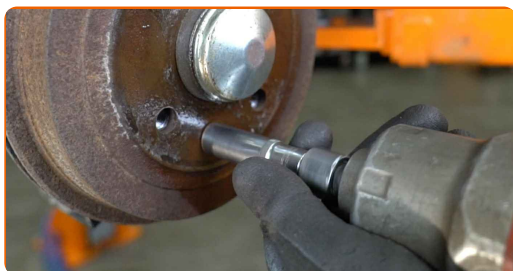


7 Clean the brake drum fasteners. Use a wire brush. Use WD-40 spray.



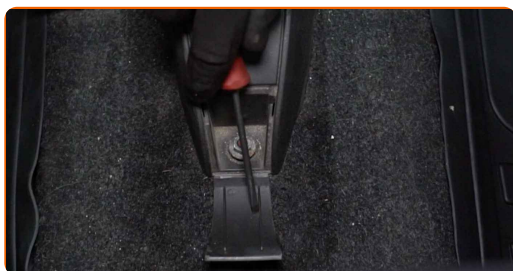
8

Unscrew the brake drum fastening. Use a drive socket #12. Use a ratchet wrench.



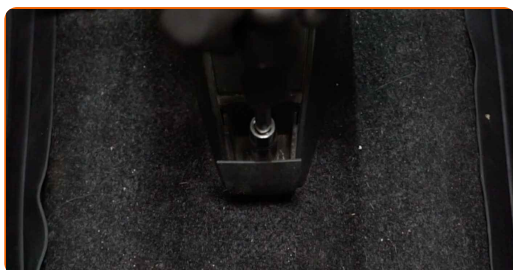
9

Remove the protective cover of the lower centre console. Use a flat screwdriver.



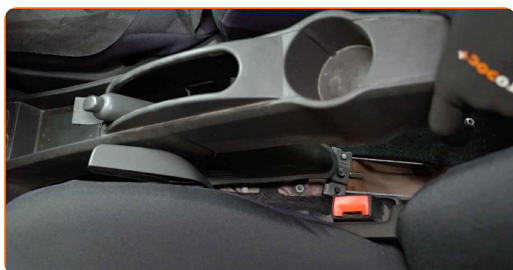
10

Unscrew the front fasteners of the lower centre console. Use a drive socket #10. Use a ratchet wrench.

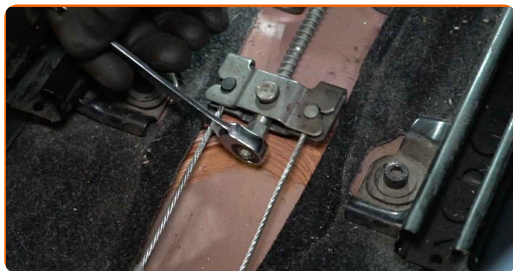


11

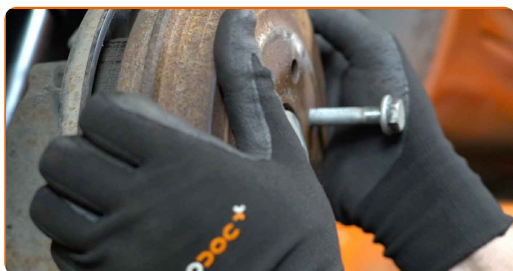
Remove the lower centre console.



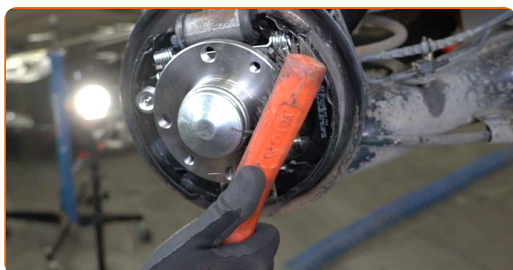
12 Loosen the parking brake cable. Use a combination spanner #10.



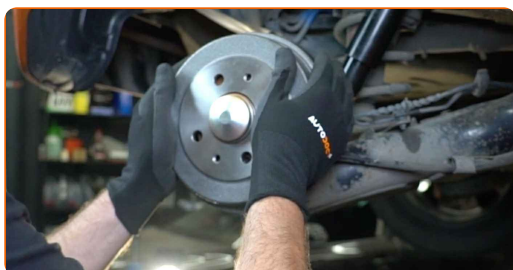
13 Remove the brake drum.



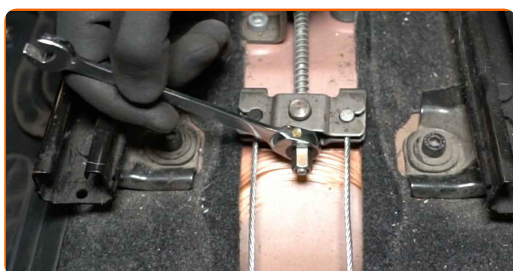
14 Clean the hub. Use a wire brush. Treat the contacting surface. Use copper grease.



15 Install a brake drum.



16 Adjust the parking brake cable tension. Use a combination spanner #10.



17 Remove the brake drum.



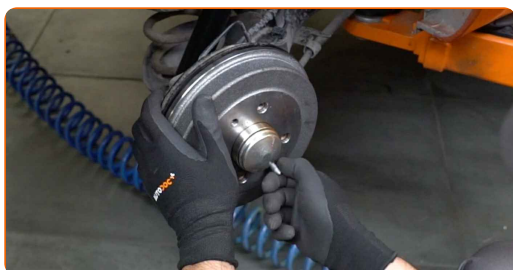
18 Move the parking brake shoes against the drum. Use a flat screwdriver.



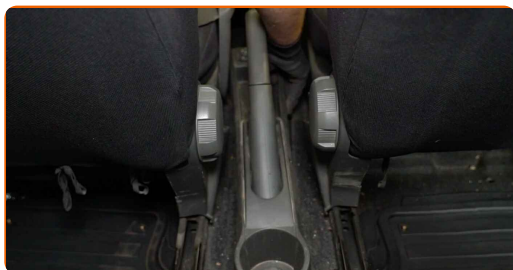
19 Install a brake drum.



20 Screw in the brake drum fastener. Use a drive socket #12. Use a ratchet wrench.



21 Reinstall the lower centre console.



22 Screw in the front fasteners of the lower centre console. Use a drive socket #10. Use a ratchet wrench.



23 Reinstall the protective cover of the lower centre console.

24 Tighten the brake drum fasteners. Use a drive socket #12. Use a torque wrench. Tighten it to 10 Nm torque.



25 Clean the wheel rim mounting seat. Use a wire brush.

26 Treat the surface where the wheel rim contacts the brake drum. Use copper grease.



27 Install the wheel.

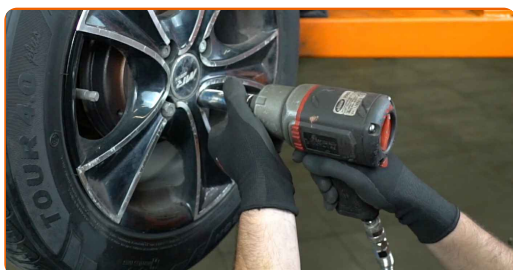


AUTODOC recommends:

- **Warning!** To avoid injury, hold the wheel while screwing in the fastening bolts on the car. Fiat Panda 169

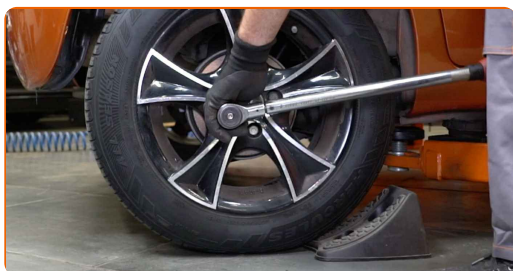
28

Screw in the wheel bolts. Use wheel impact socket #17.



29

Lower the car and working in a cross order, tighten the wheel bolts. Use wheel impact socket #17. Use a torque wrench. Tighten it to 98 Nm torque.



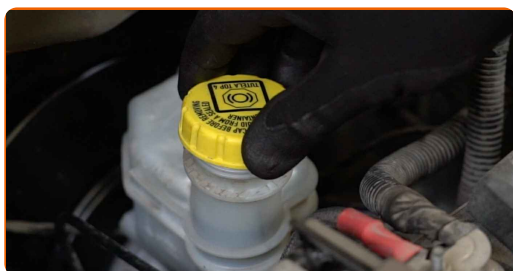
30

Remove the jacks and chocks.



31

Tighten the brake fluid reservoir cap. Close the hood.



Replacement: brake drum – Fiat Panda 169. Tip from AUTODOC:

- Adjust the gap between the brake shoes and the drum on Fiat Panda 169, pressing the brake pedal 10-15 times.

WELL DONE! 

[VIEW MORE TUTORIALS](#)

AUTODOC – TOP QUALITY AND AFFORDABLE CAR PARTS ONLINE

AUTODOC MOBILE APP: GREAT DEALS AND CONVENIENT SHOPPING



+ AUTODOC

GET IT ON  **Google Play**

 **Download on the App Store**

Download

A GREAT SELECTION OF SPARE PARTS FOR YOUR CAR

BUY SPARE PARTS FOR FIAT

BRAKE DRUM: A WIDE SELECTION

CHOOSE CAR PARTS FOR FIAT PANDA 169

BRAKE DRUM FOR FIAT: BUY NOW

BRAKE DRUM FOR FIAT PANDA 169: THE BEST DEALS & OFFERS

DISCLAIMER:

The document contains only general recommendations that may be useful for you when you perform repair or replacement work. AUTODOC shall not be liable for any loss, injury, damage of property occurring in the repair or replacement process due to incorrect use or misinterpretation of the provided information.

AUTODOC shall not be liable for any possible mistakes and uncertainties in this guide. The information provided is for information purposes only and cannot replace advice from specialists.

AUTODOC shall not be liable for incorrect or hazardous usage of equipment, tools and car parts. AUTODOC strongly recommends to be careful and observe the safety rules when performing repair or replacement works. Remember: usage of low quality auto parts does not guarantee you the appropriate level of road safety.

© Copyright 2022 – All the contents of this website, in particular texts, photographs and graphics, are protected by copyright. All rights, including reproduction, publication, editing and translation rights, are reserved by AUTODOC GmbH.