



How to change fuel filter
on **Seat Ibiza 6L1** –
replacement guide

VIDEO TUTORIAL

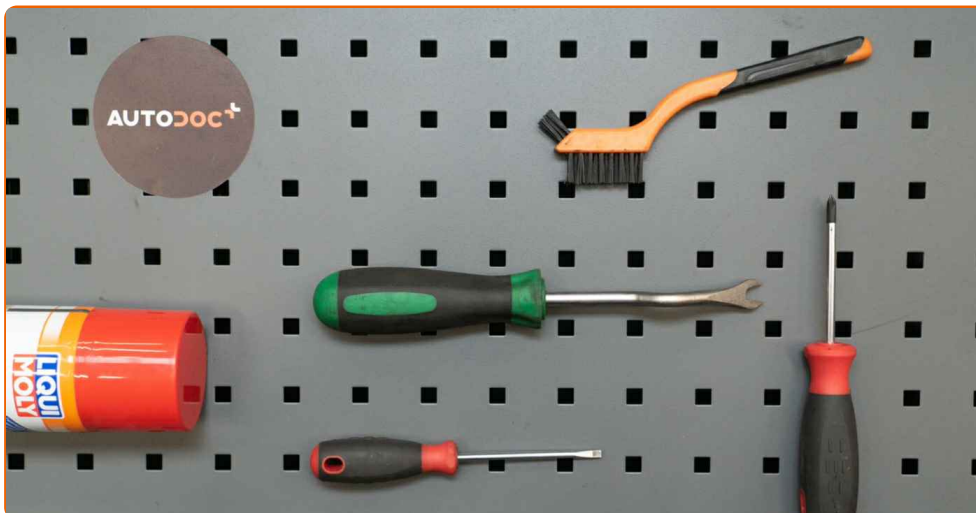
** Important!**

This replacement procedure can be used for:

SEAT Ibiza II (6K1) 1.3 i, SEAT Ibiza II (6K1) 1.6 i, SEAT Ibiza II (6K1) 1.8 i, SEAT Cordoba Saloon (6K1, 6K2) 1.4 i, SEAT Cordoba Saloon (6K1, 6K2) 1.6 i, SEAT Ibiza II (6K1) 1.4 i, SEAT Ibiza II (6K1) 2.0 i 16V, SEAT AROSA (6H) 1.0, SEAT AROSA (6H) 1.4, SEAT Ibiza II (6K1) 1.4 i 16V, SEAT Cordoba Saloon (6K1, 6K2) 1.4 i 16V, SEAT Cordoba Vario (6K5) 1.4 i, SEAT Cordoba Vario (6K5) 1.6 i, SEAT Ibiza II (6K1) 1.4 16V, SEAT Ibiza II (6K1) 1.8 T 20V Cupra, (+ 12)

The steps may slightly vary depending on the car design.

REPLACEMENT: FUEL FILTER – SEAT IBIZA 6L1. LIST OF THE TOOLS YOU'LL NEED:



- Nylon cleaning brush
- All-purpose cleaning spray
- Clip removal tool
- Flat Screwdriver
- Phillips screwdriver
- Fluid container

BUY TOOLS

Replacement: fuel filter – Seat Ibiza 6L1. AUTODOC recommends:

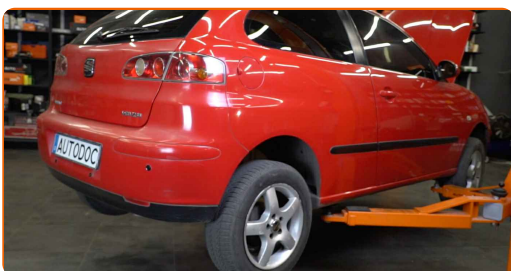
- Ensure adequate ventilation of the workplace. Fuel vapors are poisonous.
- Warning! Shut down the engine before starting any work – Seat Ibiza 6L1

CARRY OUT REPLACEMENT IN THE FOLLOWING ORDER:

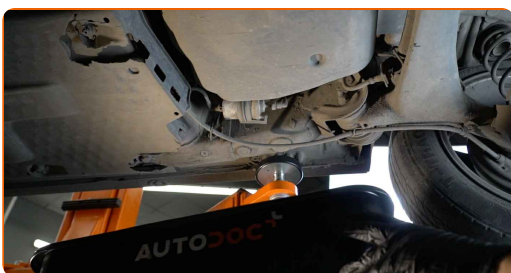
1 Open the fuel door.

2 Unscrew the fuel filler cap.

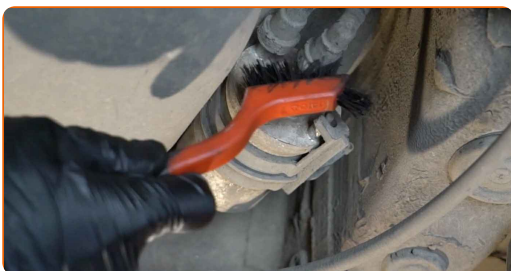
3 Lift the car using a jack or place it over an inspection pit.



4 Prepare a container for fluids.



5 Clean the fasteners of the fuel supply lines. Use a nylon cleaning brush. Use all-purpose cleaning spray.



- 6** Squeeze the clips and detach the fuel supply lines from the fuel filter housing. Use a flat screwdriver. Use a clip removal tool.



Replacement: fuel filter – Seat Ibiza 6L1. Tip:

- Be careful! Fuel may leak from the filter housing and hoses.

- 7** Unscrew the fuel filter bracket. Use a Phillips screwdriver.



- 8** Remove the fuel filter. Put the old filter cartridge in the container.



- 9** Clean the fasteners of the fuel supply lines. Use all-purpose cleaning spray.



10 Install a new fuel filter.



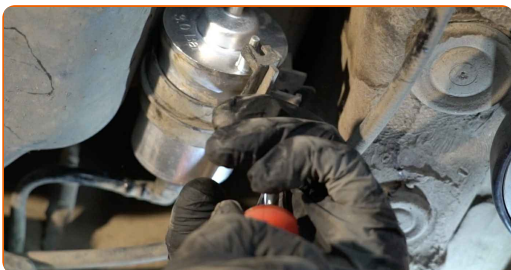
AUTODOC recommends:

- Make sure that the fuel filter is positioned correctly. Consider the fuel flow direction mark.
- During installation, take care to prevent dust and dirt from getting into the fuel filter housing.
- Attention! Use quality filters – Seat Ibiza 6L1.

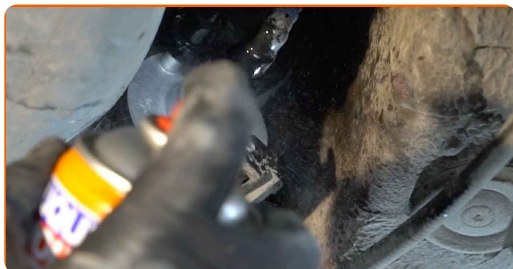
11 Connect the fuel lines to the fuel filter and lock the fastening clips.



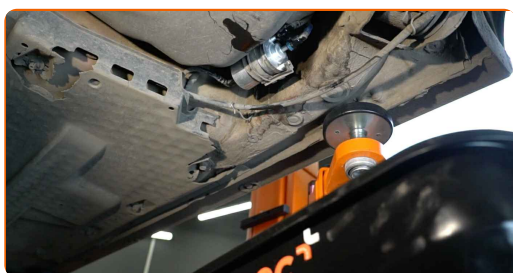
12 Screw in the fuel filter mounting bracket. Use a Phillips screwdriver.



13 Clean the fasteners of the fuel supply lines. Use all-purpose cleaning spray.



14 Take the fluid container away from under the fuel filter.



15 Lower the car.



16 Tighten the fuel filler cap.

17 Close the fuel door.

Replacement: fuel filter – Seat Ibiza 6L1. Tip from AUTODOC experts:

- Before starting off, switch the ignition on and off several times. This should be done to activate the fuel pump to make it pump fuel through the fuel system.

18

Run the engine for a few minutes. This is necessary in order to make sure that the component operates properly.



19

Shut off the engine.

WELL DONE! 

VIEW MORE TUTORIALS

AUTODOC – TOP QUALITY AND AFFORDABLE CAR PARTS ONLINE

AUTODOC MOBILE APP: GREAT DEALS AND CONVENIENT SHOPPING



+ AUTODOC

GET IT ON  **Google Play**

 **Download on the App Store**

Download

A GREAT SELECTION OF SPARE PARTS FOR YOUR CAR

BUY SPARE PARTS FOR SEAT

FUEL FILTER: A WIDE SELECTION

CHOOSE CAR PARTS FOR SEAT IBIZA 6L1

FUEL FILTER FOR SEAT: BUY NOW

FUEL FILTER FOR SEAT IBIZA 6L1: THE BEST DEALS & OFFERS

DISCLAIMER:

The document contains only general recommendations that may be useful for you when you perform repair or replacement work. AUTODOC shall not be liable for any loss, injury, damage of property occurring in the repair or replacement process due to incorrect use or misinterpretation of the provided information.

AUTODOC shall not be liable for any possible mistakes and uncertainties in this guide. The information provided is for information purposes only and cannot replace advice from specialists.

AUTODOC shall not be liable for incorrect or hazardous usage of equipment, tools and car parts. AUTODOC strongly recommends to be careful and observe the safety rules when performing repair or replacement works. Remember: usage of low quality auto parts does not guarantee you the appropriate level of road safety.

© Copyright 2023 – All the contents of this website, in particular texts, photographs and graphics, are protected by copyright. All rights, including reproduction, publication, editing and translation rights, are reserved by AUTODOC SE.