



How to change track rod
end on **Fiat Doblo Cargo**
– replacement guide

VIDEO TUTORIAL



Important!

This replacement procedure can be used for:

FIAT Doblo Cargo (223_) 1.3 JTD 16V Multijet, FIAT Doblo Cargo (223_) 1.9 JTD Multijet, FIAT MAREA (185) 1.4 80 12V, FIAT MAREA (185) 1.6 100 16V, FIAT MAREA (185) 1.8 115 16V, FIAT MAREA (185) 1.9 TD 75, FIAT MAREA (185) 1.9 TD 100, FIAT MAREA Weekend (185) 1.4 80 12V, FIAT MAREA Weekend (185) 1.6 100 16V, FIAT MAREA Weekend (185) 1.8 115 16V, FIAT MAREA Weekend (185) 1.9 TD 75, FIAT MAREA Weekend (185) 1.9 TD 100, FIAT MAREA (185) 1.6, FIAT MAREA (185) 1.6 16V, FIAT MULTIPLA (186) 1.6 100 16V, (+ 40)

The steps may slightly vary depending on the car design.

REPLACEMENT: TRACK ROD END – FIAT DOBLO CARGO. LIST OF THE TOOLS YOU'LL NEED:



- Wire brush
- WD-40 spray
- Copper grease
- Drive socket # 17
- Combination spanner #22
- Wheel impact socket #17
- Torque wrench
- Tap wrench
- Ball joint puller
- Vernier caliper
- Wheel chock

BUY TOOLS

Replacement: track rod end – Fiat Doblo Cargo. AUTODOC recommends:

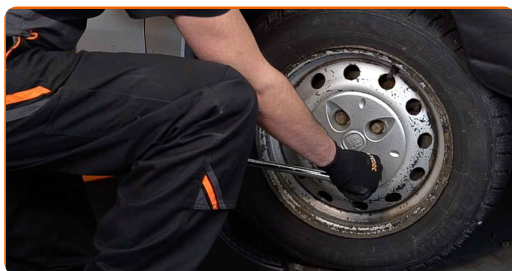
- Replace tie rod ends in pairs.
- The replacement procedure is identical for the right and left tie rod ends.
- During the installation process, use only new bolts and nuts.
- All work should be done with the engine stopped.

**REPLACEMENT: TRACK ROD END – FIAT DOBLO CARGO.
RECOMMENDED SEQUENCE OF STEPS:**

1 Secure the wheels with chocks.



2 Loosen the wheel mounting bolts. Use wheel impact socket #17.



3 Raise the front of the car and secure on supports.

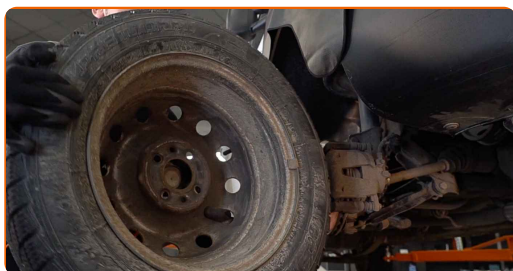


4 Unscrew the wheel bolts.

AUTODOC recommends:

- Important! Hold the wheel while unscrewing the fastening bolts. Fiat Doblo Cargo

5 Remove the wheel.



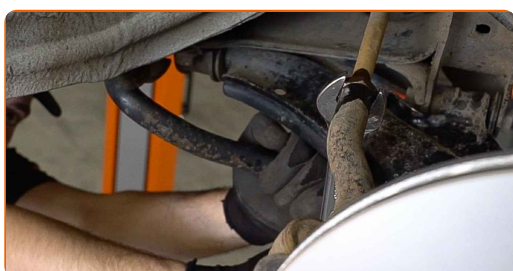
6 Clean the fastener connecting the tie rod end to the steering knuckle. Use a wire brush. Use WD-40 spray.



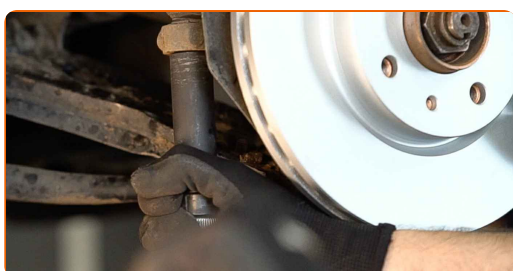
- 7 When deinstalling, mark or measure the precise position of the ball joint on the track rod, or count the number of turns in order to prevent misalignment afterward. Use a vernier caliper.



- 8 Loosen the lock nut securing the tie rod end to the tie rod. Use a combination spanner #22.



- 9 Unscrew the end fastening nut to the steering knuckle. Use a drive socket #17. Use a tap wrench.

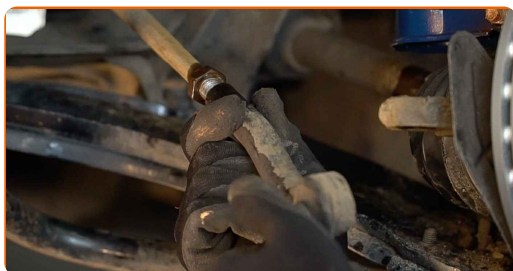


- 10 Disconnect the tie rod end from the steering knuckle. Use a ball joint puller.



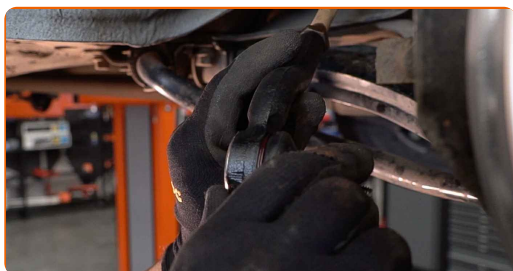
11

Screw the end out of the tie rod.



12

Screw on a new tie rod end.

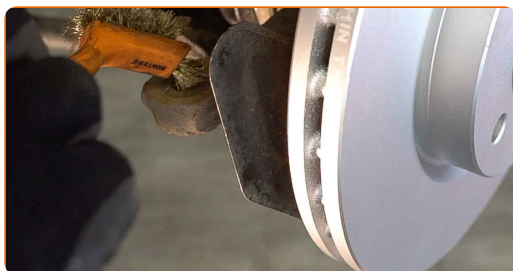


Replacement: track rod end – Fiat Doblo Cargo. AUTODOC experts recommend:

- While installing the steering rod end remember to make the same number of turns or to leave the same length of thread showing as per your measurements.

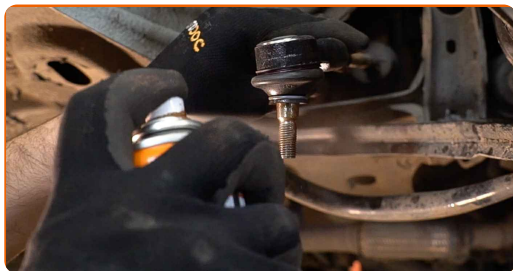
13

Clean the mounting seat of the tie rod end. Use a wire brush. Use WD-40 spray.



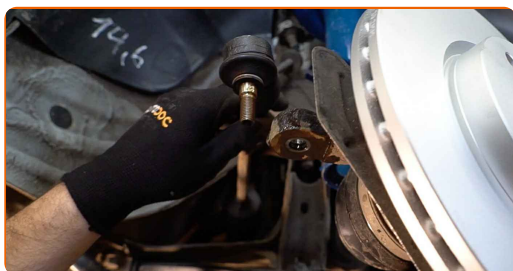
14

Treat the fastener connecting the tie rod end to the steering knuckle. Use copper grease.



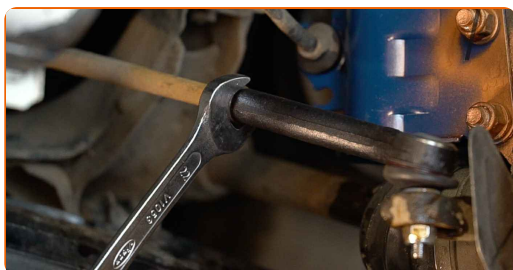
15

Connect the tie rod end to the steering knuckle. Use a drive socket #17.



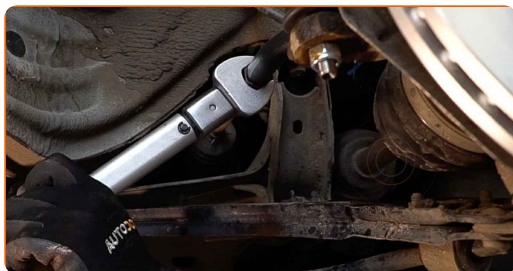
16

Screw on the tie rod end jam nut. Use a combination spanner #22.



17

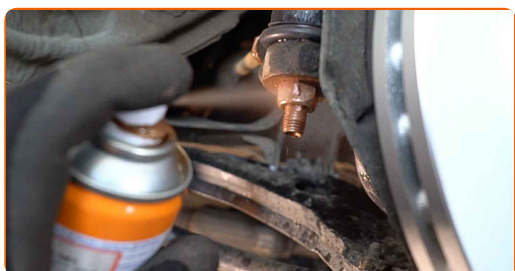
Tighten the tie rod end locknut. Use a combination spanner #22. Use a torque wrench. Tighten it to 85 nm torque.



- 18 Tighten the fastening nut connecting the tie rod end to the steering knuckle. Use a drive socket #17. Use a torque wrench. Tighten it to 49 nm torque.



- 19 Treat the fastener connecting the tie rod end to the steering knuckle. Use copper grease.



- 20 Clean the wheel rim mounting seat. Use a wire brush.

- 21 Treat the surface where the brake disc contacts the wheel rim. Use copper grease.



- 22 Install the wheel.

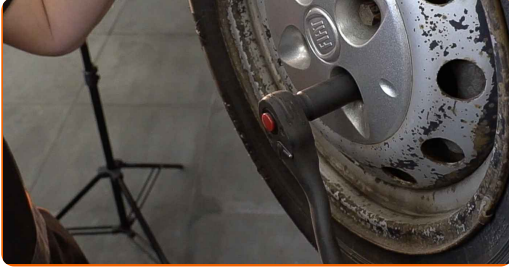


Replacement: track rod end – Fiat Doblo Cargo. Tip from AUTODOC:

- To avoid injury, hold up the wheel when screwing in the fastening bolts.

23

Screw in the wheel bolts. Use wheel impact socket #17.



24

Lower the car and working in a cross order, tighten the wheel bolts. Use a torque wrench. Tighten it to 98 nm torque.



Replacement: track rod end – Fiat Doblo Cargo. Professionals recommend:

- Check and adjust wheel alignment if necessary.

25

Remove the jacks and chocks.



WELL DONE! 

VIEW MORE TUTORIALS

AUTODOC – TOP QUALITY AND AFFORDABLE CAR PARTS ONLINE

AUTODOC MOBILE APP: GREAT DEALS AND CONVENIENT SHOPPING



+ AUTODOC

GET IT ON
Google Play

Download on the
App Store

Download

A GREAT SELECTION OF SPARE PARTS FOR YOUR CAR

BUY SPARE PARTS FOR FIAT

TRACK ROD END: A WIDE SELECTION

CHOOSE CAR PARTS FOR FIAT DOBLO CARGO

TRACK ROD END FOR FIAT: BUY NOW

**TRACK ROD END FOR FIAT DOBLO CARGO: THE BEST
DEALS & OFFERS**

DISCLAIMER:

The document contains only general recommendations that may be useful for you when you perform repair or replacement work. AUTODOC shall not be liable for any loss, injury, damage of property occurring in the repair or replacement process due to incorrect use or misinterpretation of the provided information.

AUTODOC shall not be liable for any possible mistakes and uncertainties in this guide. The information provided is for information purposes only and cannot replace advice from specialists.

AUTODOC shall not be liable for incorrect or hazardous usage of equipment, tools and car parts. AUTODOC strongly recommends to be careful and observe the safety rules when performing repair or replacement works. Remember: usage of low quality auto parts does not guarantee you the appropriate level of road safety.

© Copyright 2023 – All the contents of this website, in particular texts, photographs and graphics, are protected by copyright. All rights, including reproduction, publication, editing and translation rights, are reserved by AUTODOC SE.