



How to change engine oil
and filter on **HONDA**
Integra III Coupe (DC5) –
replacement guide

SIMILAR VIDEO TUTORIAL



This video shows the replacement procedure of a similar car part on another vehicle

Important!

This replacement procedure can be used for:

HONDA Integra III Coupe (DC5) 2.0 16V Type-R, HONDA Integra III Coupe (DC5) 2.0

The steps may slightly vary depending on the car design.

This tutorial was created based on the replacement procedure for a similar car part on: HONDA Jazz Hatchback (GD, GE3, GE2) 1.2 i-DSI (GD5, GE2)

REPLACEMENT: ENGINE OIL AND FILTER – HONDA
INTEGRA III COUPE (DC5). LIST OF THE TOOLS YOU'LL
NEED:



- Wire brush
- All-purpose cleaning spray
- Torque wrench
- Drive socket # 17
- Oil filter cup socket 65/14-F
- Ratchet wrench
- Funnel
- Oil drain pan
- Fender cover

[Buy tools](#)

Replacement: engine oil and filter – HONDA Integra III Coupe (DC5). AUTODOC recommends:

- Replace the oil filter every time when changing motor oil.
- Wear gloves to prevent contact with hot liquid.
- Use only new O-rings during installation.
- Please note: all work on the car – HONDA Integra III Coupe (DC5) – should be done with the engine switched off.

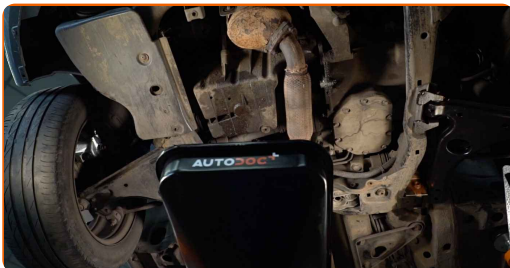
CARRY OUT REPLACEMENT IN THE FOLLOWING ORDER:

- 1 Lift the car using a jack or place it over an inspection pit.

Replacement: engine oil and filter – HONDA Integra III Coupe (DC5). AUTODOC experts recommend:

- The vehicle must be on even keel, and if it is at an angle, the drain plug must be at the lowest point.
- Unscrew the oil filler plug.

- 2 Put a waste oil container with at least 4 l capacity under the drainage hole.



3

Clean the area of the oil pan drainage hole. Use a wire brush. Use all-purpose cleaning spray.



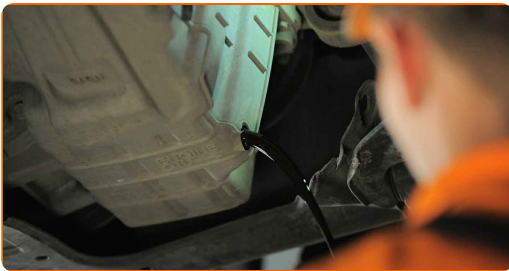
4

Unscrew the drain plug. Use a drive socket #17. Use a ratchet wrench.



5

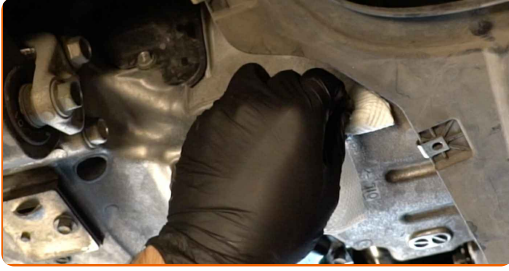
Drain the used oil.



AUTODOC recommends:

- Caution! The oil may be hot.
- Wait until the oil has completely drained from the drainage hole.

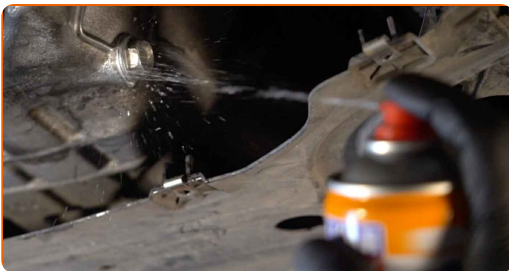
6 Clean the area of the oil pan drainage hole.



7 Screw in the new drainage plug and tighten it. Use a drive socket #17. Use a torque wrench. Tighten it to 39 nm torque.



8 Clean the area of the oil pan drainage hole. Use all-purpose cleaning spray.

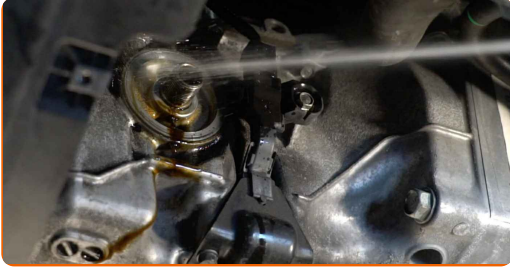


9 Unscrew the oil filter. Use the 65/14-F socket. Use a ratchet wrench.



10 Put the old oil filter in the container.

11 Clean the oil filter seat. Use all-purpose cleaning spray.



12 Screw the new filter into its place. Use the 65/14-F socket. Observe the recommended tightening torque.



13 Lower the car.

14 Open the hood.

15 Use a fender protection cover to prevent damaging paintwork and plastic parts of the car.

16 Remove the oil filler cap.



17 Insert the funnel.



18 Pour oil into the engine through the filler. Required amount of oil: 3,6 L.



Replacement: engine oil and filter – HONDA Integra III Coupe (DC5). Tip:

- Use the oil recommended by the manufacturer.

19 Check the oil level using the dipstick. Top up oil if necessary.



Please note!

- The oil level should be between the Min and Max marks.

20 Install the oil filler cap.

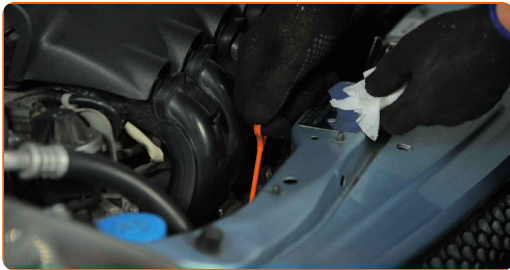


21 Tighten the oil filler cap.



22 Run the engine for a few minutes. After the oil pressure warning light goes out, stop the engine.

23 Check the oil level 5 minutes after the stop of the engine operation using a dipstick and add oil if necessary.



Please note!

- The oil level should be between the Min and Max marks.
- Make sure that the oil filler cap is properly tightened.
- Check the threaded plug of the drainage hole and the oil filter seal for tightness. If necessary, carefully tighten them up.

24 Remove the fender protection cover.

25 Close the hood.

Replacement: engine oil and filter – HONDA Integra III Coupe (DC5). Tip from AUTODOC experts:

- Note that oil pressure warning light, which indicates insufficient pressure in the lubrication system, may be on for a longer time than usual. After a few seconds, the oil will fill all the channels, and the light will go out.
- To protect the environment from pollution, be sure to dispose of the used filters at special collection points.

WELL DONE! 

[VIEW MORE TUTORIALS](#)

AUTODOC – TOP QUALITY AND AFFORDABLE CAR PARTS ONLINE

AUTODOC MOBILE APP: GREAT DEALS AND CONVENIENT SHOPPING

AUTODOC

GET IT ON
Google Play

Download on the
App Store

Download

A GREAT SELECTION OF SPARE PARTS FOR YOUR CAR

OIL FILTER: A WIDE SELECTION

(i) DISCLAIMER:

The document contains only general recommendations that may be useful for you when you perform repair or replacement work. AUTODOC shall not be liable for any loss, injury, damage of property occurring in the repair or replacement process due to incorrect use or misinterpretation of the provided information.

AUTODOC shall not be liable for any possible mistakes and uncertainties in this guide. The information provided is for information purposes only and cannot replace advice from specialists.

AUTODOC shall not be liable for incorrect or hazardous usage of equipment, tools and car parts. AUTODOC strongly recommends to be careful and observe the safety rules when performing repair or replacement works. Remember: usage of low quality auto parts does not guarantee you the appropriate level of road safety.

© Copyright 2022 – All the contents of this website, in particular texts, photographs and graphics, are protected by copyright. All rights, including reproduction, publication, editing and translation rights, are reserved by AUTODOC GmbH.