



How to change track rod  
end on **FORD Transit**  
**Tourneo (FC\_ \_)** –  
replacement guide

## SIMILAR VIDEO TUTORIAL



This video shows the replacement procedure of a similar car part on another vehicle

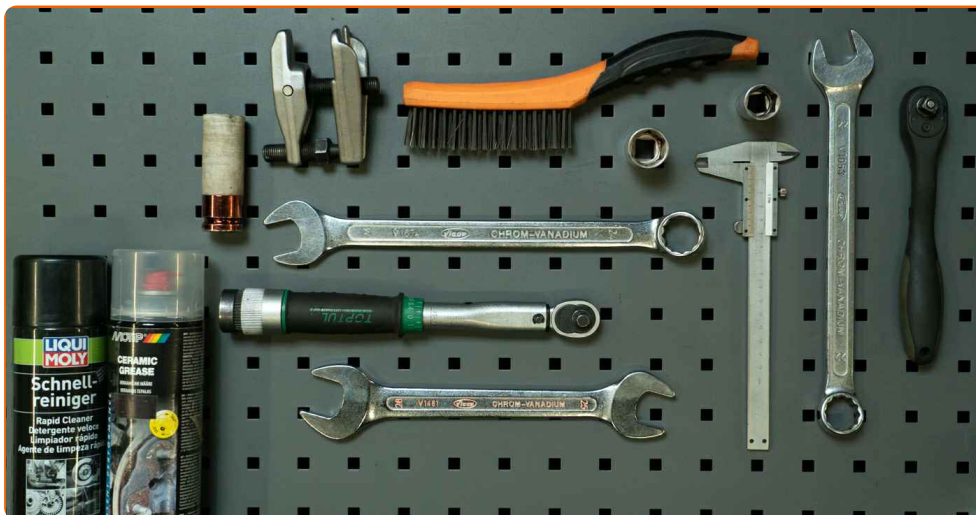
### Important!

This replacement procedure can be used for:  
FORD TRANSIT TOURNEO (FC\_ \_) 2.0

The steps may slightly vary depending on the car design.

This tutorial was created based on the replacement procedure for a similar car part on: FORD Transit Mk6 Box (V347, V348, FA) 2.2 TDCi

## REPLACEMENT: TRACK ROD END – FORD TRANSIT TOURNEO (FC\_ \_). LIST OF THE TOOLS YOU'LL NEED:



- Wire brush
- WD-40 spray
- An all-purpose cleaning spray
- Ceramic grease
- Torque wrench
- 22 mm combination spanner
- 24 mm combination spanner
- 25 mm combination spanner
- 19 mm socket
- 22 mm socket
- 21 mm wheel impact socket
- Ratchet wrench
- Tommy bar
- Vernier caliper
- Ball joint separator
- Wheel chocks

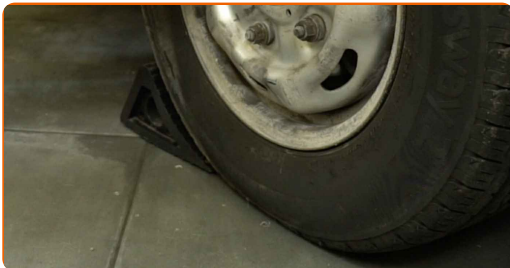
[Buy tools](#)

Replacement: track rod end – FORD Transit Tourneo (FC\_ \_). Tip from AUTODOC:

- Replace the tie rod ends in pairs.
- All the work should be carried out with the ignition switched off.

## REPLACEMENT: TRACK ROD END – FORD TRANSIT TOURNEO (FC\_ \_). TAKE THE FOLLOWING STEPS:

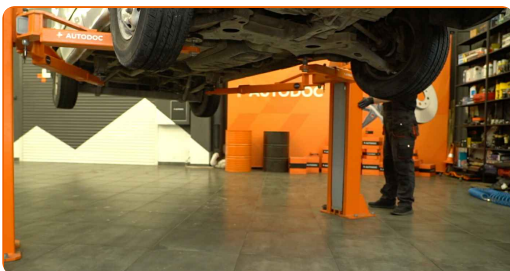
1 Secure the wheels with chocks.



2 Loosen the wheel nuts. Use a 21 mm wheel impact socket. Use a tommy bar.



3 Raise the car.

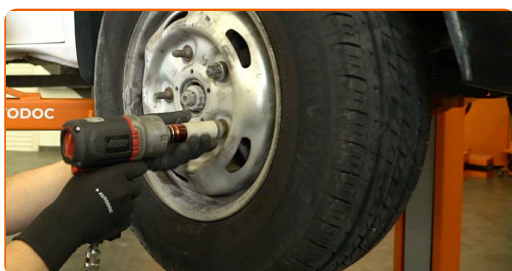


### Warning!

- If you are using a jack, make sure the car is parked on a hard, flat surface.
- Make sure to additionally secure the car with jack stands.

4

Unscrew the wheel nuts.



### Caution!

- To avoid injury, hold up the wheel when unscrewing the nuts.

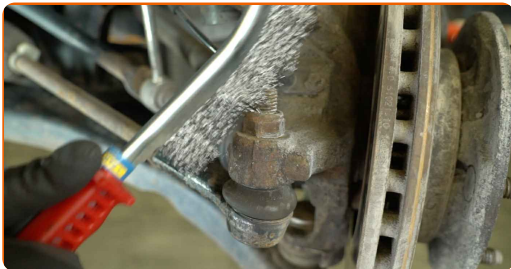
5

Remove the wheel.

•

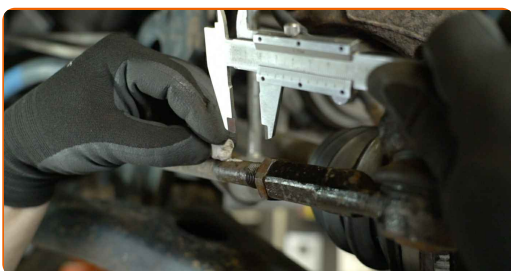
6

Clean all tie rod end connections. Use a wire brush. Use WD-40 spray.



7

Measure and note down the length of the exposed portion of the tie rod thread or the number of turns the tie rod end made when being unscrewed to prevent wheel misalignment during reassembly. Use a vernier caliper.



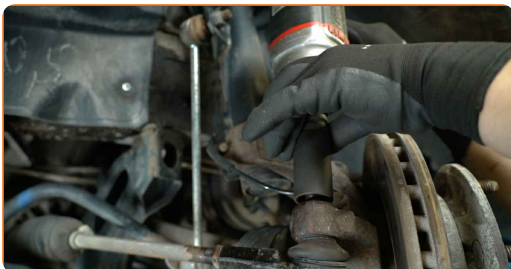
8

Loosen the lock nut securing the tie rod end to the tie rod. Use a 22 mm combination spanner. Use a 24 mm combination spanner.

•

9

Unscrew the nut connecting the tie rod end to the steering knuckle. Use a 22 mm socket. Use a ratchet wrench.



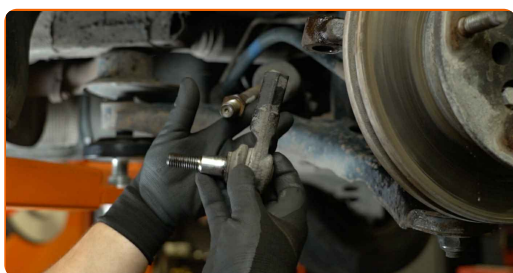
10

Disconnect the tie rod end from the steering knuckle. Use a ball joint separator.



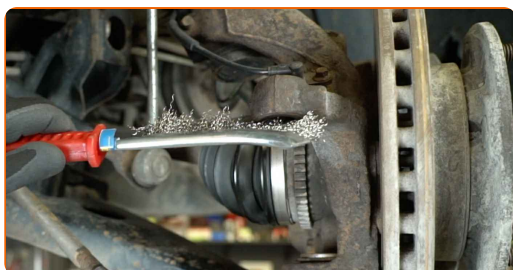
11

Unscrew the tie rod end from the tie rod.



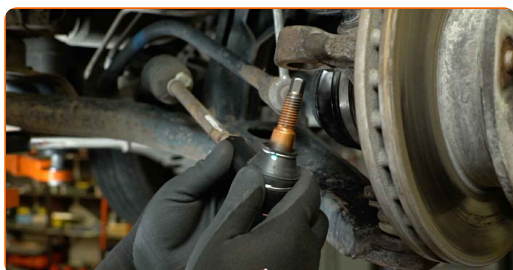
12

Clean the mounting seats of the tie rod end. Use a wire brush. Use an all-purpose cleaning spray.



13

Screw on a new tie rod end.



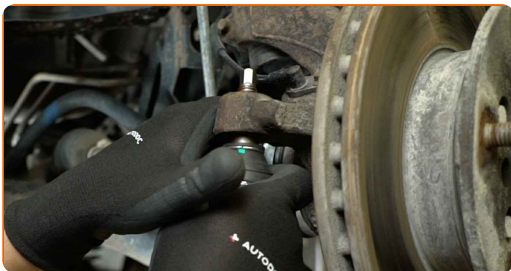


Replacement: track rod end – FORD Transit Tourneo (FC\_ \_). AUTODOC recommends:

- When installing the tie rod end, remember to maintain the same length of the exposed tie rod thread or turn the tie rod end the same number of times.

14

Connect the tie rod end to the steering knuckle.



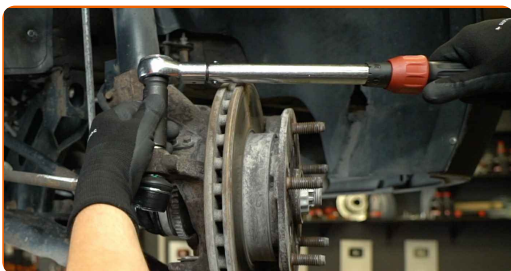
15

Having adjusted the tie rod end to the correct position, secure it with the lock nut.



16

Tighten the nut connecting the tie rod end to the steering knuckle. Use a 19 mm socket. Use a torque wrench. Tightening torque: 80 N·m.

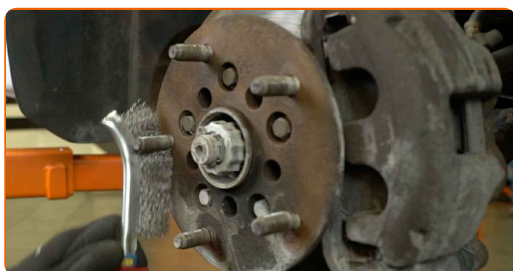




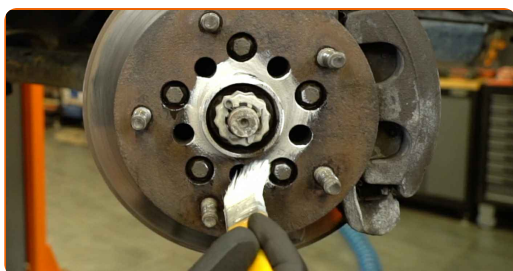
- 17** Tighten the tie rod end lock nut. Use a combination spanner #24. Use a combination spanner #25. Use a torque wrench. Tightening torque: 80 N·m.



- 18** Clean the wheel rim mounting seat. Use a wire brush. Use an all-purpose cleaning spray.



- 19** Treat the wheel hub surface that contacts the wheel rim. Use ceramic grease.



- 20** Install the wheel.



### Caution!

- To avoid injury, hold up the wheel when screwing on the fastening nuts.

21

Screw on the wheel nuts. Use a 21 mm wheel impact socket. Use a ratchet wrench.



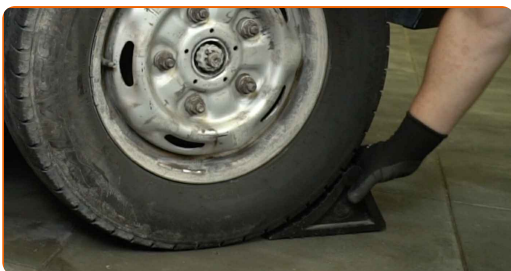
22

Lower the car and tighten the wheel nuts in a criss-cross pattern. Use a 21 mm wheel impact socket. Use a torque wrench. Tightening torque: 200 N·m.



23

Remove the jack, jack stands, and wheel chocks.



Replacement: track rod end – FORD Transit Tourneo (FC\_ \_). Professionals recommend:

- After replacing the tie rod ends, it is necessary to have the wheels aligned.

**WELL DONE!** 

**[VIEW MORE TUTORIALS](#)**

## AUTODOC – TOP QUALITY AND AFFORDABLE CAR PARTS ONLINE

**AUTODOC MOBILE APP: GREAT DEALS AND CONVENIENT SHOPPING**





 GET IT ON  
Google Play

 Download on the  
App Store

**Download**

**A GREAT SELECTION OF SPARE PARTS FOR YOUR CAR**

**TRACK ROD END: A WIDE SELECTION**

### (i) **DISCLAIMER:**

The document contains only general recommendations that may be useful for you when you perform repair or replacement work. AUTODOC shall not be liable for any loss, injury, damage of property occurring in the repair or replacement process due to incorrect use or misinterpretation of the provided information.

AUTODOC shall not be liable for any possible mistakes and uncertainties in this guide. The information provided is for information purposes only and cannot replace advice from specialists.

AUTODOC shall not be liable for incorrect or hazardous usage of equipment, tools and car parts. AUTODOC strongly recommends to be careful and observe the safety rules when performing repair or replacement works. Remember: usage of low quality auto parts does not guarantee you the appropriate level of road safety.

© Copyright 2024 – All the contents of this website, in particular texts, photographs and graphics, are protected by copyright. All rights, including reproduction, publication, editing and translation rights, are reserved by AUTODOC SE.