



How to change a power  
window switch on the  
**FORD Transit Mk6  
Minibus (V347, V348) –  
replacement guide**

## SIMILAR VIDEO TUTORIAL



This video shows the replacement procedure of a similar car part on another vehicle

### Important!

This replacement procedure can be used for:  
FORD TRANSIT Bus 2.4 TDCi, FORD TRANSIT Bus 2.2 TDCi, FORD TRANSIT Bus 2.4 TDCi 4x4, FORD TRANSIT Bus 3.2 TDCi

The steps may slightly vary depending on the car design.

This tutorial was created based on the replacement procedure for a similar car part on: FORD TRANSIT MK-7 Box 2.2 TDCi

**REPLACEMENT: POWER WINDOW SWITCH – FORD TRANSIT MK6 MINIBUS (V347, V348). TOOLS YOU'LL NEED:**



- Electronic spray
- Masking tape
- Torque wrench
- 8 mm socket
- 10 mm socket
- Ratchet wrench
- Drill
- Drill bit set
- Riveter
- Rivets
- Phillips screwdriver
- Long nose pliers
- Plastic trim removal tool

**Buy tools**

Replacement: power window switch – FORD Transit Mk6 Minibus (V347, V348). AUTODOC experts recommend:

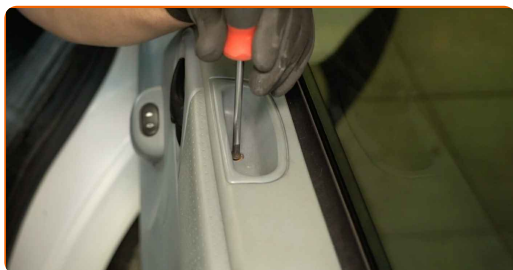
- All the work should be carried out with the ignition switched off.

## REPLACEMENT: POWER WINDOW SWITCH – FORD TRANSIT MK6 MINIBUS (V347, V348). TAKE THE FOLLOWING STEPS:

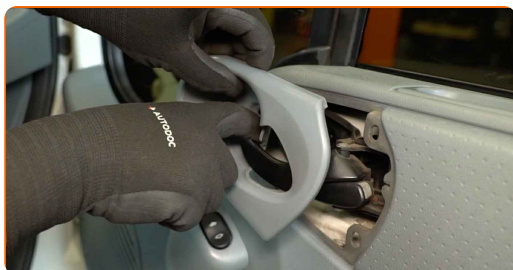
**1** Open the car door.



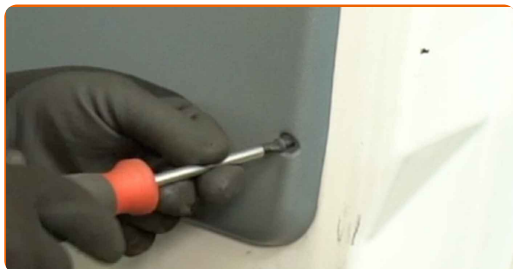
**2** Unscrew the door card fasteners. Use a Phillips screwdriver.



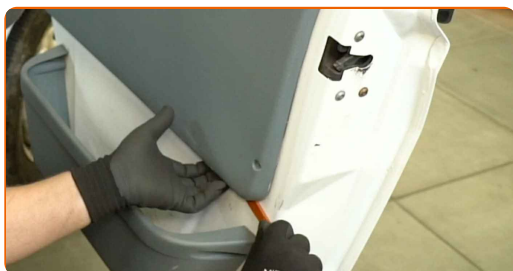
**3** Detach the door handle trim cover.



**4** Remove the fastening screws.



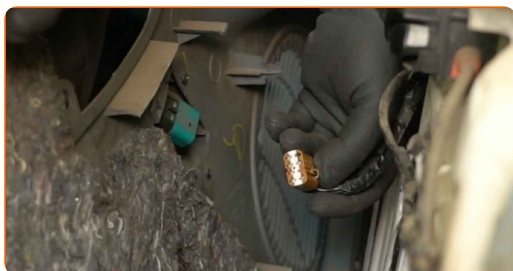
**5** Detach the door card. Use a plastic trim removal tool.



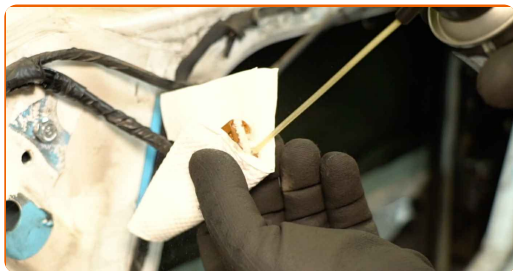
Replacement: power window switch – FORD Transit Mk6 Minibus (V347, V348). AUTODOC recommends:

- Do not apply excessive force when removing the part. Otherwise you may damage it.

**6** Detach the connector from the power window switch.



**7** Treat the connector of the power window switch. Use an electronic spray.



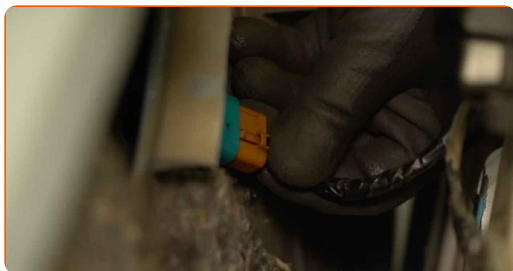
**8** Remove the old power window switch from the door card. Use long nose pliers.



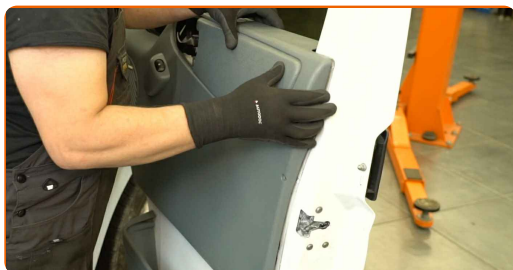
**9** Install the new power window switch onto the door card.



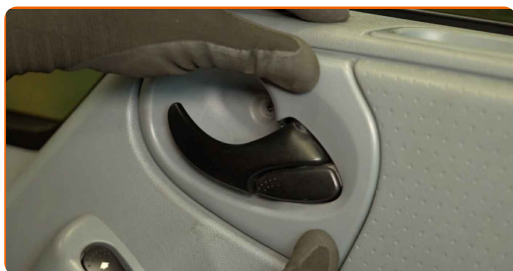
**10** Attach the connector to the power window switch.



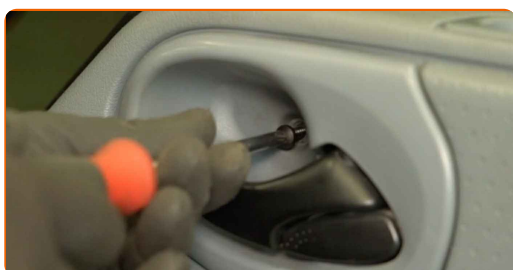
**11** Reinstall the door card.



**12** Attach the door handle trim cover.



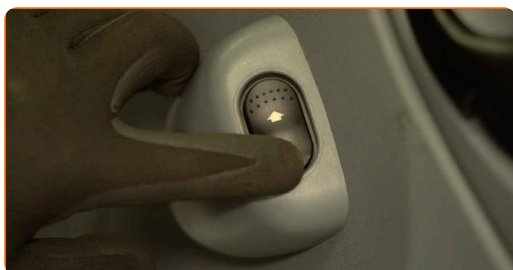
**13** Install the fastening screws.



**14** Tighten the door card fasteners. Use a Phillips screwdriver.



**15** Check that the new component is working.



16

Close the car door.



**WELL DONE!** 

**VIEW MORE TUTORIALS**



# AUTODOC – TOP QUALITY AND AFFORDABLE CAR PARTS ONLINE

**AUTODOC MOBILE APP: GREAT DEALS AND CONVENIENT SHOPPING**



**+ AUTODOC**

GET IT ON  
**Google Play**

Download on the  
**App Store**

**Download**

**A GREAT SELECTION OF SPARE PARTS FOR YOUR CAR**

**POWER WINDOW SWITCH: A WIDE SELECTION**

## **DISCLAIMER:**

The document contains only general recommendations that may be useful for you when you perform repair or replacement work. AUTODOC shall not be liable for any loss, injury, damage of property occurring in the repair or replacement process due to incorrect use or misinterpretation of the provided information.

AUTODOC shall not be liable for any possible mistakes and uncertainties in this guide. The information provided is for information purposes only and cannot replace advice from specialists.

AUTODOC shall not be liable for incorrect or hazardous usage of equipment, tools and car parts. AUTODOC strongly recommends to be careful and observe the safety rules when performing repair or replacement works. Remember: usage of low quality auto parts does not guarantee you the appropriate level of road safety.

© Copyright 2024 – All the contents of this website, in particular texts, photographs and graphics, are protected by copyright. All rights, including reproduction, publication, editing and translation rights, are reserved by AUTODOC SE.