



How to change the front
door lock on the **FORD**
Transit Mk6 Minibus
(V347, V348) –
replacement guide

SIMILAR VIDEO TUTORIAL



This video shows the replacement procedure of a similar car part on another vehicle

Important!

This replacement procedure can be used for:

FORD TRANSIT Bus 2.2 TDCi, FORD TRANSIT Bus 2.2 TDCi RWD, FORD TRANSIT Bus 2.4 TDCi, FORD TRANSIT Bus 2.4 TDCi 4x4, FORD TRANSIT Bus 3.2 TDCi

The steps may slightly vary depending on the car design.

This tutorial was created based on the replacement procedure for a similar car part on: FORD TRANSIT MK-7 Box 2.2 TDCi

**REPLACEMENT: DOOR LOCK – FORD TRANSIT MK6
MINIBUS (V347, V348). LIST OF THE TOOLS YOU'LL
NEED:**



- Electronic spray
- Torque wrench
- 8 mm socket
- T30 Torx bit
- Ratchet wrench
- Ratchet screwdriver
- Phillips screwdriver
- Plastic trim removal tool

Buy tools

Replacement: door lock – FORD Transit Mk6 Minibus (V347, V348). AUTODOC experts recommend:

- The replacement procedure is identical for the locks on the left and right front doors.
- All the work should be carried out with the ignition switched off.

REPLACEMENT: DOOR LOCK – FORD TRANSIT MK6 MINIBUS (V347, V348). USE THE FOLLOWING PROCEDURE:

1 Open the car door.



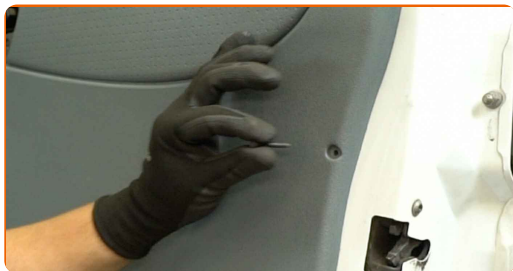
2 Unscrew the door card fasteners. Use a Phillips screwdriver.



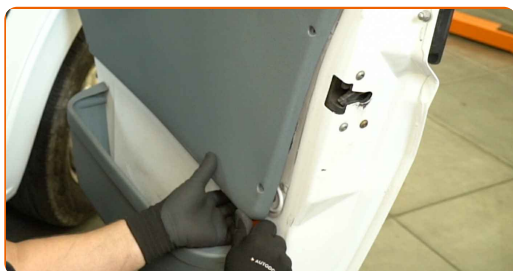
3 Detach the door handle trim cover.



4 Remove the fastening screws.



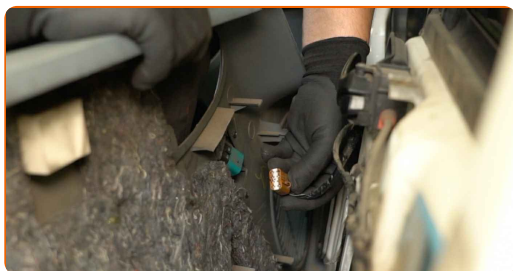
5 Detach the door card. Use a plastic trim removal tool.



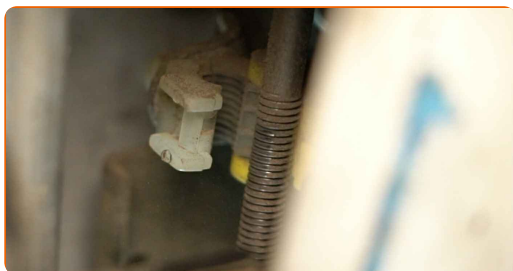
Important!

- Do not apply excessive force when removing the part. Otherwise you may damage it.

6 Detach the connector from the power window switch.

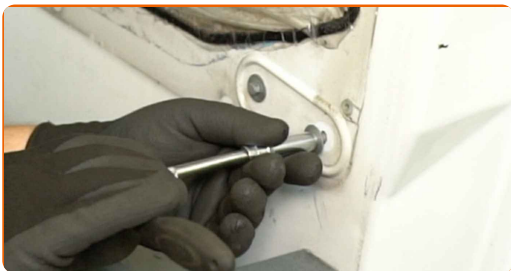


7 Unsnap the lock rod that connects the lock to the exterior door handle.

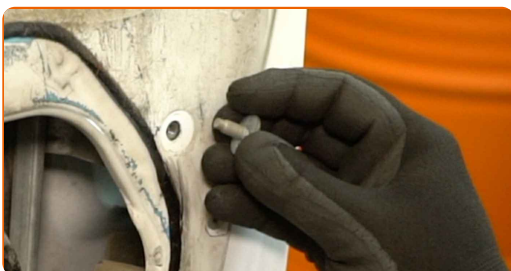


8

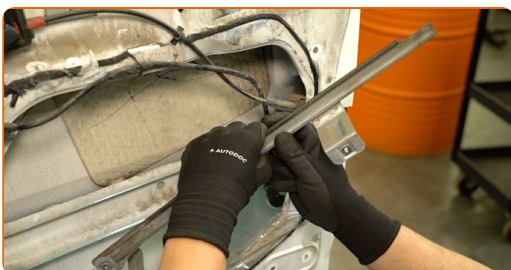
Unscrew the window guide rail fasteners. Use an 8 mm socket. Use a ratchet wrench.

**9**

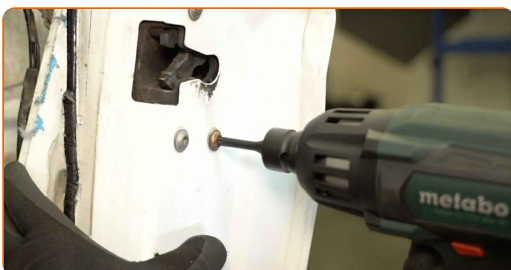
Remove the fastening bolts.

**10**

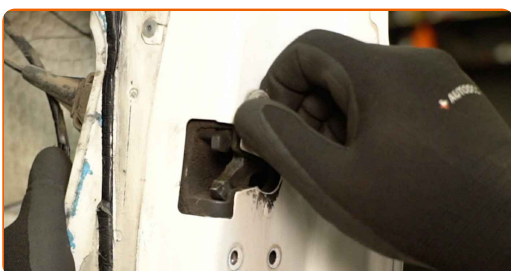
Remove the window guide rail.

**11**

Unscrew the door lock fasteners. Use a T30 Torx bit. Use an electric or ratchet screwdriver.

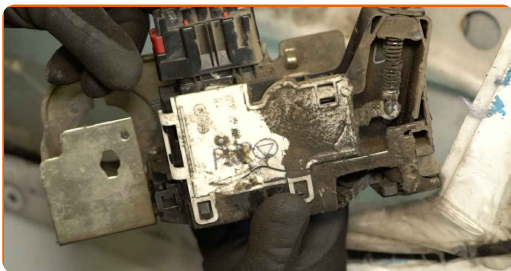
**12**

Remove the fastening screws.



13

Remove the door lock.

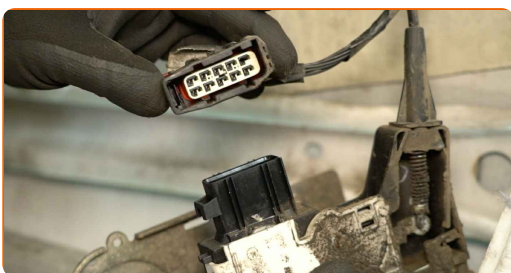


Replacement: door lock – FORD Transit Mk6 Minibus (V347, V348). Tip from AUTODOC experts:

- Do not apply excessive force when removing the part. Otherwise you may damage it.

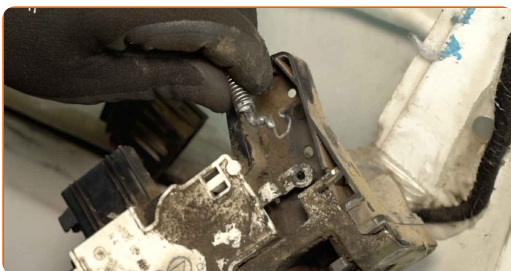
14

Detach the connector from the door lock.



15

Detach the door latch cable from the lock.



16 Treat the door lock connector. Use an electronic spray.



17 Attach the door latch cable to a new door lock.



18 Attach the connector to the new door lock.



19 Install the new lock.



20 Install the fastening screws.



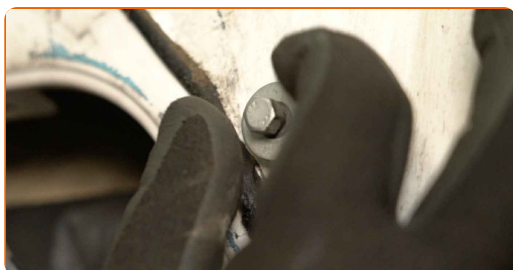
21 Tighten the door lock fasteners. Use a T30 Torx bit. Use a torque wrench. Tightening torque: 12 N·m.



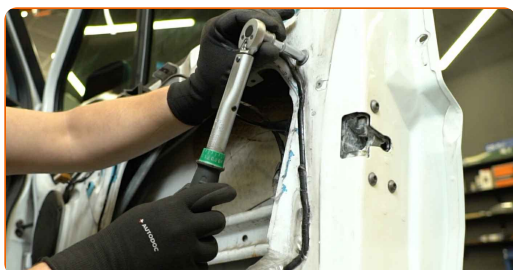
22 Install the window guide rail.



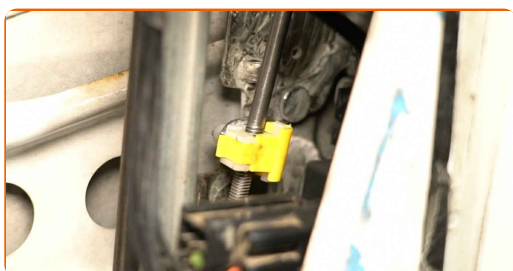
23 Install the fastening bolts.



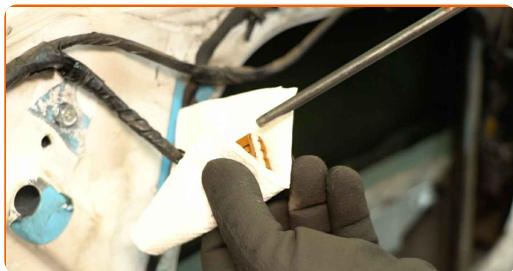
24 Tighten the window guide rail fasteners. Use an 8 mm socket. Use a torque wrench. Tightening torque: 10 N·m.



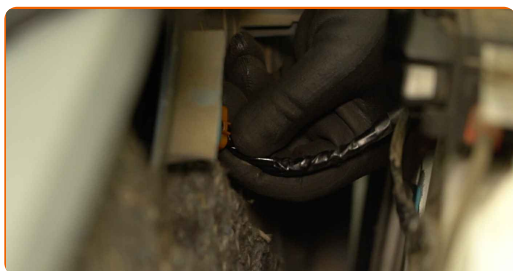
25 Snap into place the lock rod that connects the lock to the exterior door handle.



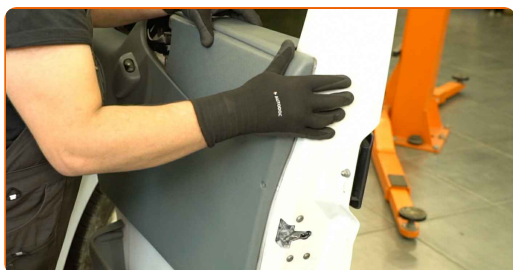
26 Treat the connector of the power window switch. Use an electronic spray.



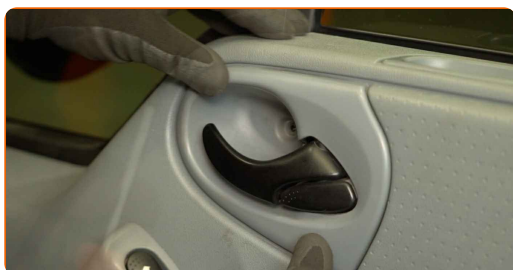
27 Attach the connector to the power window switch.



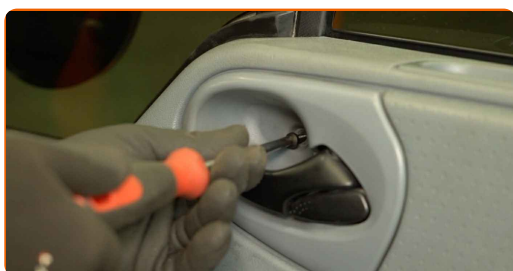
28 Reinstall the door card.



29 Attach the door handle trim cover.



30 Install the fastening screws.



31

Tighten the door card fasteners. Use a Phillips screwdriver.

**32**

Close the car door.

**33**

Check that the new component is working.

WELL DONE! **VIEW MORE TUTORIALS**

AUTODOC – TOP QUALITY AND AFFORDABLE CAR PARTS ONLINE

AUTODOC MOBILE APP: GREAT DEALS AND CONVENIENT SHOPPING



+ AUTODOC

GET IT ON
Google Play

 Download on the
App Store

Download

A GREAT SELECTION OF SPARE PARTS FOR YOUR CAR

DOOR LOCK: A WIDE SELECTION

DISCLAIMER:

The document contains only general recommendations that may be useful for you when you perform repair or replacement work. AUTODOC shall not be liable for any loss, injury, damage of property occurring in the repair or replacement process due to incorrect use or misinterpretation of the provided information.

AUTODOC shall not be liable for any possible mistakes and uncertainties in this guide. The information provided is for information purposes only and cannot replace advice from specialists.

AUTODOC shall not be liable for incorrect or hazardous usage of equipment, tools and car parts. AUTODOC strongly recommends to be careful and observe the safety rules when performing repair or replacement works. Remember: usage of low quality auto parts does not guarantee you the appropriate level of road safety.

© Copyright 2024 – All the contents of this website, in particular texts, photographs and graphics, are protected by copyright. All rights, including reproduction, publication, editing and translation rights, are reserved by AUTODOC SE.