



How to change a wing  
mirror on the **FORD**  
**Transit Mk5 Platform /**  
**Chassis (V184, V185) –**  
replacement guide

### SIMILAR VIDEO TUTORIAL



This video shows the replacement procedure of a similar car part on another vehicle

#### **i Important!**

This replacement procedure can be used for:

FORD TRANSIT Platform/Chassis (FM\_-, FN\_-) 2.4 DI, FORD TRANSIT Platform/Chassis (FM\_-, FN\_-) 2.0 DI, FORD TRANSIT Platform/Chassis (FM\_-, FN\_-) 2.3 16V, FORD TRANSIT Platform/Chassis (FM\_-, FN\_-) 2.0 TDCi, FORD TRANSIT Platform/Chassis (FM\_-, FN\_-) 2.4 TDE, FORD TRANSIT Platform/Chassis (FM\_-, FN\_-) 2.4 TDCi, FORD TRANSIT Platform/Chassis (FM\_-, FN\_-) 2.3 BiFuel

The steps may slightly vary depending on the car design.

This tutorial was created based on the replacement procedure for a similar car part on: FORD TRANSIT MK-7 Box 2.2 TDCi

YOU WILL NEED:



- Electronic spray
- 8 mm socket
- Ratchet wrench
- Flat head screwdriver

[Buy tools](#)

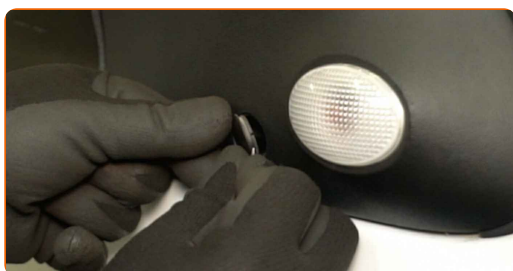
**AUTODOC recommendation:**

- All the work should be carried out with the ignition switched off.

**CARRY OUT THE REPLACEMENT STEPS AS FOLLOWS:**

**1**

Remove the covers of the wing mirror fasteners. Use a flat head screwdriver.



**2**

Unscrew the wing mirror fasteners. Use an 8 mm socket. Use a ratchet wrench.

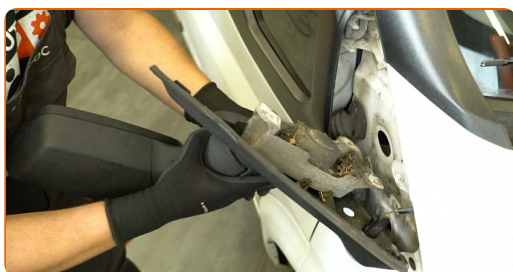


**3**

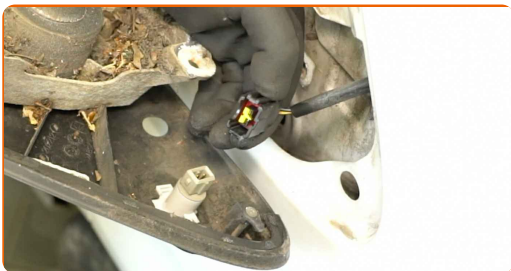
Remove the fastening bolts.

**4**

Remove the wing mirror.



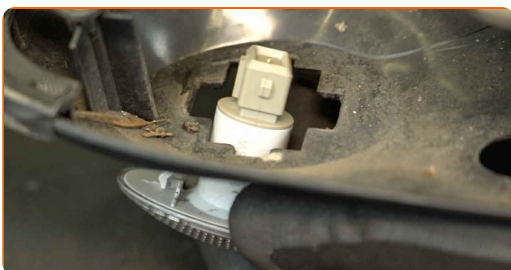
**5** Detach the connector from the turn signal repeater light.



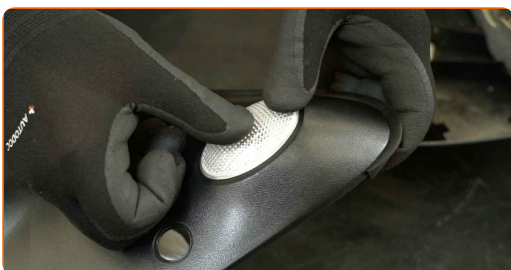
**6** Treat the connector of the turn signal repeater light. Use an electronic spray.



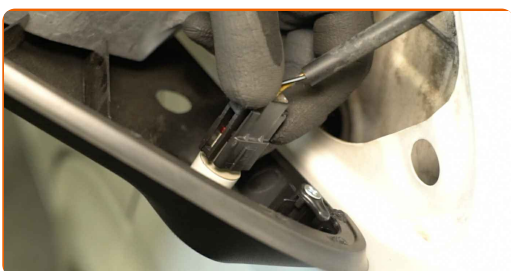
**7** Remove the turn signal repeater light.



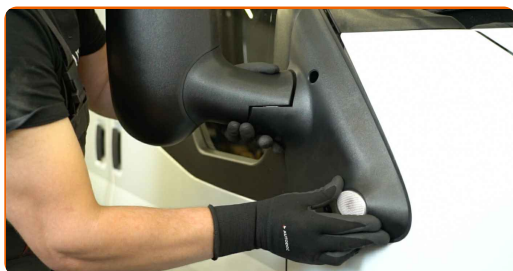
**8** Install the turn signal repeater light on a new wing mirror.



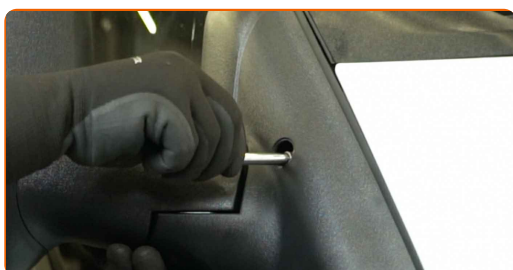
**9** Reattach the connector to the turn signal repeater light.



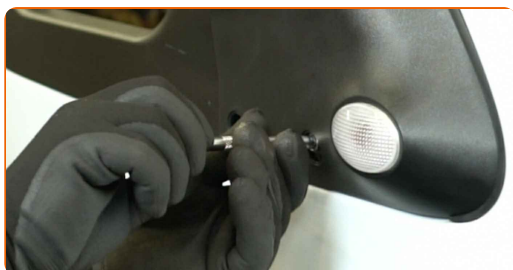
**10** Install the new wing mirror.



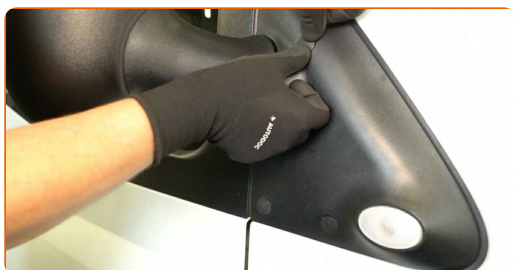
**11** Install the fastening bolts.



**12** Screw in the wing mirror fasteners. Use an 8 mm socket. Use a ratchet wrench.



**13** Install the covers of the wing mirror fasteners.



**WELL DONE!** 

**VIEW MORE TUTORIALS**

# AUTODOC – TOP QUALITY AND AFFORDABLE CAR PARTS ONLINE

**AUTODOC MOBILE APP: GREAT DEALS AND CONVENIENT SHOPPING**



**+ AUTODOC**

GET IT ON  
**Google Play**

 Download on the  
**App Store**

**Download**

**A GREAT SELECTION OF SPARE PARTS FOR YOUR CAR**

**WING MIRROR: A WIDE SELECTION**

## **DISCLAIMER:**

The document contains only general recommendations that may be useful for you when you perform repair or replacement work. AUTODOC shall not be liable for any loss, injury, damage of property occurring in the repair or replacement process due to incorrect use or misinterpretation of the provided information.

AUTODOC shall not be liable for any possible mistakes and uncertainties in this guide. The information provided is for information purposes only and cannot replace advice from specialists.

AUTODOC shall not be liable for incorrect or hazardous usage of equipment, tools and car parts. AUTODOC strongly recommends to be careful and observe the safety rules when performing repair or replacement works. Remember: usage of low quality auto parts does not guarantee you the appropriate level of road safety.

© Copyright 2024 – All the contents of this website, in particular texts, photographs and graphics, are protected by copyright. All rights, including reproduction, publication, editing and translation rights, are reserved by AUTODOC SE.