



How to change fuel filter  
on **FORD TRANSIT MK-7**  
**Platform/Chassis** –  
replacement guide

## SIMILAR VIDEO TUTORIAL



This video shows the replacement procedure of a similar car part on another vehicle

### **i Important!**

This replacement procedure can be used for:

FORD TRANSIT MK-7 Platform/Chassis 2.3 16V RWD, FORD TRANSIT MK-7 Platform/Chassis 2.3 16V LPG RWD

The steps may slightly vary depending on the car design.

This tutorial was created based on the replacement procedure for a similar car part on: FORD MONDEO III Saloon (B4Y) 2.0 16V

## REPLACEMENT: FUEL FILTER – FORD TRANSIT MK-7 PLATFORM/CHASSIS. LIST OF THE TOOLS YOU'LL NEED:



- Wire brush
- Nylon cleaning brush
- WD-40 spray
- All-purpose cleaning spray
- Drive socket # 8
- Drive socket # 10
- Fluid container
- Ratchet wrench

[Buy tools](#)

Replacement: fuel filter – FORD TRANSIT MK-7 Platform/Chassis. AUTODOC experts recommend:

- Ensure adequate ventilation of the workplace. Fuel vapors are poisonous.
- All work should be done with the engine stopped.

## REPLACEMENT: FUEL FILTER – FORD TRANSIT MK-7 PLATFORM/CHASSIS. USE THE FOLLOWING PROCEDURE:

**1** Open the fuel door.

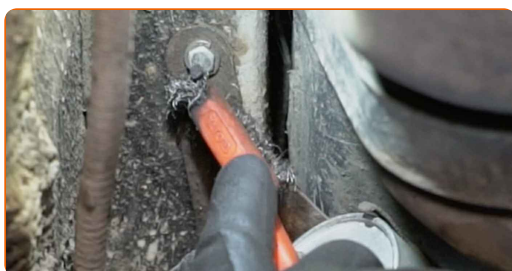


**2** Unscrew the fuel filler cap.

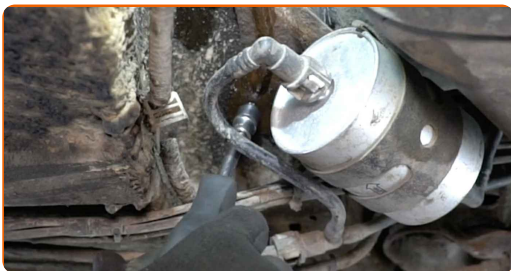


**3** Lift the car using a jack or place it over an inspection pit.

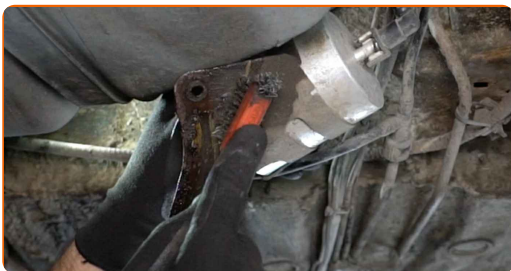
**4** Clean the fuel filter mounting bracket. Use a wire brush. Use WD-40 spray.



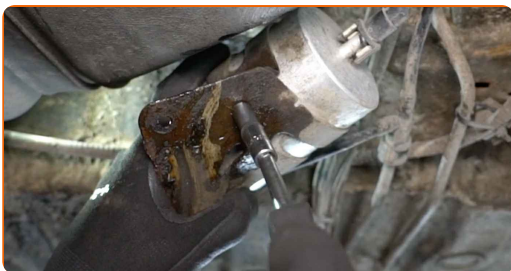
- 5 Unscrew the fastening bolts of the fuel filter bracket. Use a drive socket #10. Use a ratchet wrench.



- 6 Clean the fuel filter mounting bracket. Use a wire brush. Use WD-40 spray.



- 7 Unscrew the fuel filter bracket. Use a drive socket #8. Use a ratchet wrench.



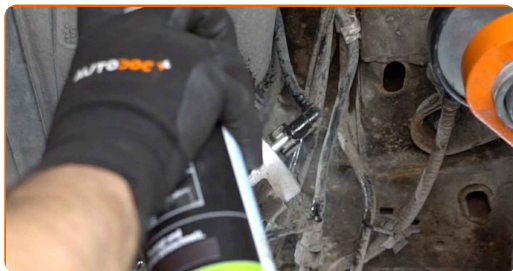
- 8 Remove the fuel filter fastening bracket.

- 9 Prepare a container for fluids.



10

Clean the fasteners of the fuel supply lines. Use a nylon cleaning brush. Use all-purpose cleaning spray.



11

Disconnect the fuel supply lines from the fuel filter.



12

Remove the fuel filter.

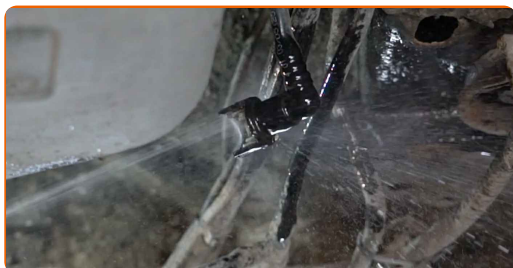


Replacement: fuel filter – FORD TRANSIT MK-7 Platform/Chassis. AUTODOC experts recommend:

- Be careful! Fuel may leak from the filter housing and hoses.

13

Clean the fuel lines. Use all-purpose cleaning spray.



14

Install a new fuel filter.



Replacement: fuel filter – FORD TRANSIT MK-7 Platform/Chassis. AUTODOC recommends:

- Remember, it is important not to mix up the input and output of the filter. Arrows on the filter indicate the direction of fuel flow.
- During installation, take care to prevent dust and dirt from getting into the fuel filter housing.
- Attention! Use quality filters – FORD TRANSIT MK-7 Platform/Chassis.

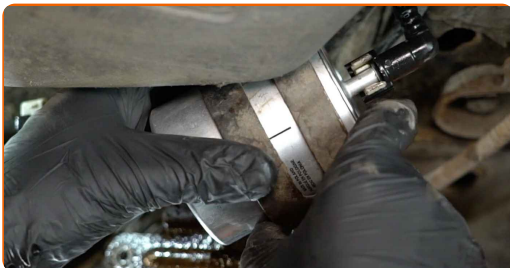
15

Install the fuel line.



16

Install the fuel filter fastening bracket.

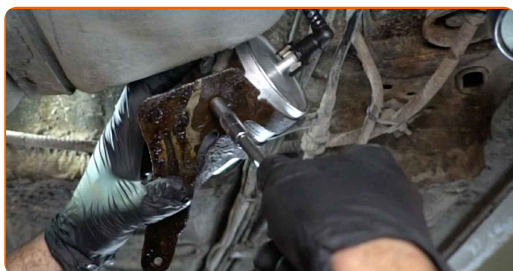




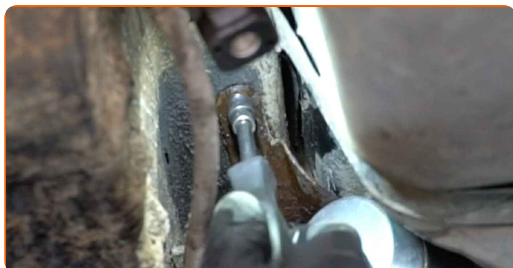
**17** Install the fuel line.



**18** Screw in the fuel filter mounting bracket. Use a drive socket #8. Use a ratchet wrench.



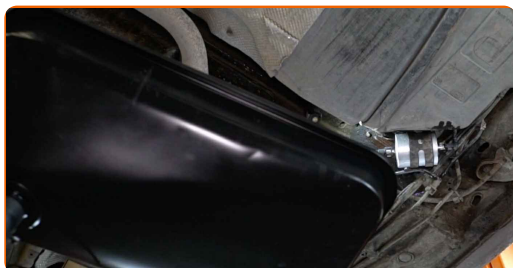
**19** Screw in the fastening bolts of the fuel filter bracket. Use a drive socket #10. Use a ratchet wrench.



**20** Clean the fuel filter. Use all-purpose cleaning spray.



**21** Take the fluid container away from under the fuel filter.





**22** Lower the car.

**23** Tighten the fuel filler cap.



**24** Close the fuel door.



Replacement: fuel filter – FORD TRANSIT MK-7 Platform/Chassis. Tip from AUTODOC experts:

- Before starting off, switch the ignition on and off several times. This should be done to activate the fuel pump to make it pump fuel through the fuel system.

**25** Run the engine for a few minutes. This is necessary in order to make sure that the component operates properly.

**26** Shut off the engine.

**WELL DONE!** 

**VIEW MORE TUTORIALS**

## AUTODOC – TOP QUALITY AND AFFORDABLE CAR PARTS ONLINE

**AUTODOC MOBILE APP: GREAT DEALS AND CONVENIENT SHOPPING**





 GET IT ON  
Google Play

 Download on the  
App Store

**Download**

**A GREAT SELECTION OF SPARE PARTS FOR YOUR CAR**

**FUEL FILTER: A WIDE SELECTION**

### ⓘ **DISCLAIMER:**

The document contains only general recommendations that may be useful for you when you perform repair or replacement work. AUTODOC shall not be liable for any loss, injury, damage of property occurring in the repair or replacement process due to incorrect use or misinterpretation of the provided information.

AUTODOC shall not be liable for any possible mistakes and uncertainties in this guide. The information provided is for information purposes only and cannot replace advice from specialists.

AUTODOC shall not be liable for incorrect or hazardous usage of equipment, tools and car parts. AUTODOC strongly recommends to be careful and observe the safety rules when performing repair or replacement works. Remember: usage of low quality auto parts does not guarantee you the appropriate level of road safety.

© Copyright 2023 – All the contents of this website, in particular texts, photographs and graphics, are protected by copyright. All rights, including reproduction, publication, editing and translation rights, are reserved by AUTODOC SE.