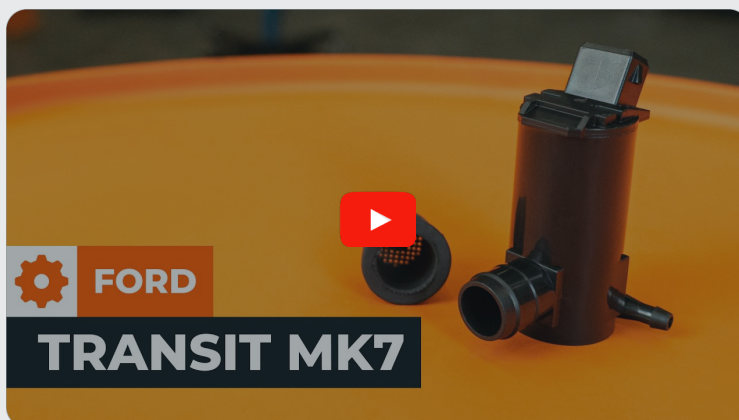




How to replace the
windscreen washer
pump on the **FORD**
Transit Connect Mk1
Van – replacement guide

SIMILAR VIDEO TUTORIAL



This video shows the replacement procedure of a similar car part on another vehicle

Important!

This replacement procedure can be used for:

FORD TRANSIT CONNECT (P65_, P70_, P80_) 1.8 16V, FORD TRANSIT CONNECT (P65_, P70_, P80_) 1.8 Di, FORD TRANSIT CONNECT (P65_, P70_, P80_) 1.8 TDCi

The steps may slightly vary depending on the car design.

This tutorial was created based on the replacement procedure for a similar car part on: FORD TRANSIT MK-7 Box 2.2 TDCi

REPLACEMENT: WINDSCREEN WASHER PUMP – FORD TRANSIT CONNECT MK1 VAN. LIST OF THE TOOLS YOU'LL NEED:



- Wire brush
- Nylon brush
- WD-40 spray
- All-purpose cleaning spray
- Electronic spray
- Ceramic grease
- Torque wrench
- 10 mm socket
- 21 mm wheel impact socket
- Ratchet wrench
- Tommy bar
- Mounting lever
- Hose removal pliers
- Fender cover
- Wheel chocks

Buy tools

Replacement: windscreen washer pump – FORD Transit Connect Mk1 Van.
AUTODOC recommends:

- All the work should be carried out with the ignition switched off.

REPLACEMENT: WINDSCREEN WASHER PUMP – FORD TRANSIT CONNECT MK1 VAN. RECOMMENDED SEQUENCE OF STEPS:

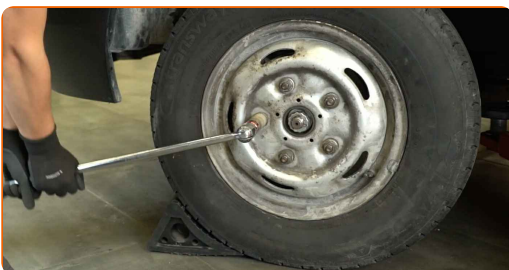
1 Open the bonnet.

2 Use a fender protection cover to avoid damaging the paintwork and plastic parts of the car.

3 Secure the wheels with chocks.



4 Loosen the wheel nuts. Use a 21 mm wheel impact socket. Use a tommy bar.



5 Raise the car.

Warning!

- If you are using a jack, make sure the car is parked on a hard, flat surface.
- Make sure to additionally secure the car with jack stands.

6

Unscrew the wheel nuts.

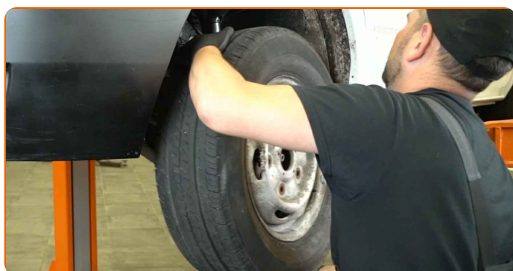


Replacement: windscreen washer pump – FORD Transit Connect Mk1 Van. Tip from AUTODOC experts:

- To avoid injury, hold up the wheel when unscrewing the nuts.

7

Remove the wheel.



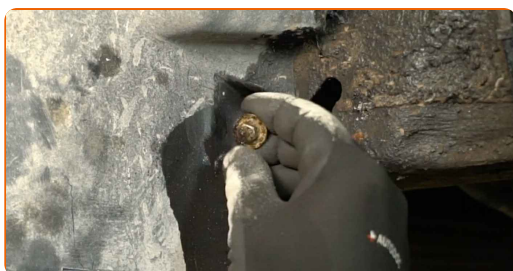
8 Clean the fastener of the windscreen washer reservoir's plastic cover. Use a wire brush. Use WD-40 spray.



9 Unscrew the fastening bolt of the windscreen washer reservoir's cover. Use a 10 mm socket. Use a ratchet wrench.



10 Remove the fastening bolt.



11 Remove the windscreen washer reservoir's cover.



12 Clean the windscreen washer pump. Use a nylon brush. Use an all-purpose cleaning spray.



13 Detach the connector from the windscreen washer pump. Use a mounting lever.



14 Put a container under the windscreen washer pump.



15 Detach the windscreen washer hose. Use hose removal pliers.



16 Remove the windscreen washer pump. Use hose removal pliers.



17 Remove the washer pump seal. Use a mounting lever.



18 Clean the mounting seat of the windscreen washer pump. Use an all-purpose cleaning spray.



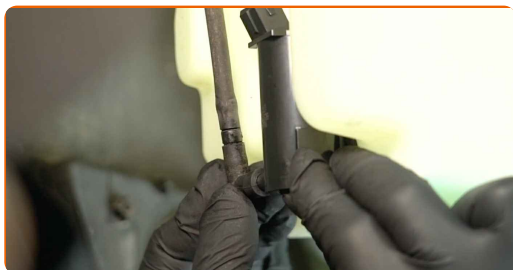
19 Install a new washer pump seal.



20 Install a new windscreen washer pump.



21 Attach the windscreen washer hose.



22 Treat the windscreen washer pump connector. Use an electronic spray.



23 Attach the windscreen washer pump connector.



24 Install the windscreen washer reservoir's cover.



25 Install the fastening bolt.



26 Screw in the fastening bolt of the windscreen washer reservoir's cover. Use a 10 mm socket. Use a ratchet wrench.



27

Clean the wheel rim mounting seat. Use a wire brush. Use an all-purpose cleaning spray.



28

Treat the wheel hub surface that contacts the wheel rim. Use ceramic grease.



29

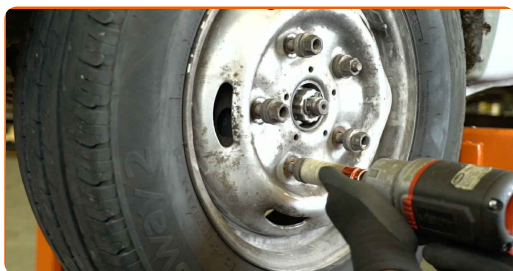
Install the wheel.



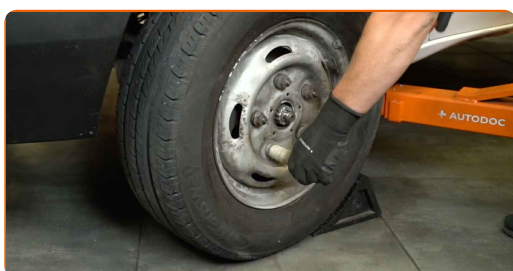
Replacement: windscreen washer pump – FORD Transit Connect Mk1 Van.
Professionals recommend:

- To avoid injury, hold up the wheel when screwing on the fastening nuts.

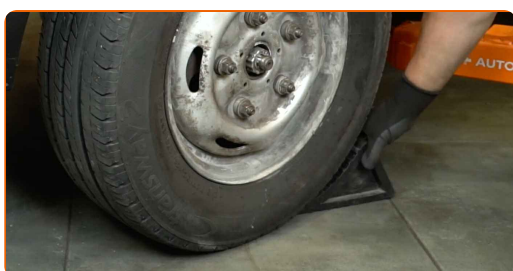
30 Screw on the wheel nuts. Use a 21 mm wheel impact socket. Use a ratchet wrench.



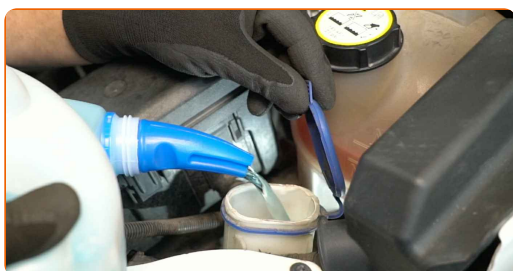
31 Lower the car and tighten the wheel nuts in a criss-cross order. Use a 21 mm wheel impact socket. Use a torque wrench. Tightening torque: 200 N·m.



32 Remove the jack, jack stands, and wheel chocks.



33 Pour new washer fluid into the windscreen washer reservoir.



34 Remove the fender cover.

35 Close the bonnet.

36

Check that the new component is working.

WELL DONE! 

VIEW MORE TUTORIALS

AUTODOC – TOP QUALITY AND AFFORDABLE CAR PARTS ONLINE

AUTODOC MOBILE APP: GREAT DEALS AND CONVENIENT SHOPPING



+ AUTODOC

GET IT ON
Google Play

Download on the
App Store

Download

A GREAT SELECTION OF SPARE PARTS FOR YOUR CAR

WINDSCREEN WASHER PUMP: A WIDE SELECTION

DISCLAIMER:

The document contains only general recommendations that may be useful for you when you perform repair or replacement work. AUTODOC shall not be liable for any loss, injury, damage of property occurring in the repair or replacement process due to incorrect use or misinterpretation of the provided information.

AUTODOC shall not be liable for any possible mistakes and uncertainties in this guide. The information provided is for information purposes only and cannot replace advice from specialists.

AUTODOC shall not be liable for incorrect or hazardous usage of equipment, tools and car parts. AUTODOC strongly recommends to be careful and observe the safety rules when performing repair or replacement works. Remember: usage of low quality auto parts does not guarantee you the appropriate level of road safety.

© Copyright 2024 – All the contents of this website, in particular texts, photographs and graphics, are protected by copyright. All rights, including reproduction, publication, editing and translation rights, are reserved by AUTODOC SE.