



How to change a window
regulator on the **Ford
Transit Mk7 van** –
replacement guide

VIDEO TUTORIAL



Important!

This replacement procedure can be used for:

FORD TRANSIT Bus 2.4 TDCi, FORD TRANSIT MK-7 Box 2.2 TDCi, FORD TRANSIT MK-7 Box 2.4 TDCi RWD, FORD TRANSIT MK-7 Box 2.3 16V RWD, FORD TRANSIT Bus 2.2 TDCi, FORD TRANSIT MK-7 Platform/Chassis 2.3 16V RWD, FORD TRANSIT MK-7 Platform/Chassis 2.2 TDCi, FORD TRANSIT MK-7 Platform/Chassis 2.4 TDCi RWD, FORD TRANSIT Bus 2.4 TDCi 4x4, FORD TRANSIT Bus 3.2 TDCi, FORD TRANSIT MK-7 Box 3.2 TDCi RWD, FORD TRANSIT MK-7 Platform/Chassis 3.2 TDCi RWD, FORD TRANSIT MK-7 Box 2.4 TDCi 4x4, FORD TRANSIT MK-7 Platform/Chassis 2.4 TDCi 4x4

The steps may slightly vary depending on the car design.

REPLACEMENT: WINDOW REGULATOR – FORD
TRANSIT MK7 VAN. TOOLS YOU NEED:



- Electronic spray
- Masking tape
- Torque wrench
- 8 mm socket
- 10 mm socket
- Ratchet wrench
- Drill
- Drill bit set
- Riveter
- Rivets
- Phillips screwdriver
- Long nose pliers
- Plastic trim removal tool

BUY TOOLS

Replacement: window regulator – Ford Transit Mk7 van. AUTODOC experts recommend:

- All the work should be carried out with the ignition switched off.

REPLACEMENT: WINDOW REGULATOR – FORD TRANSIT MK7 VAN. USE THE FOLLOWING PROCEDURE:

1 Open the car door.



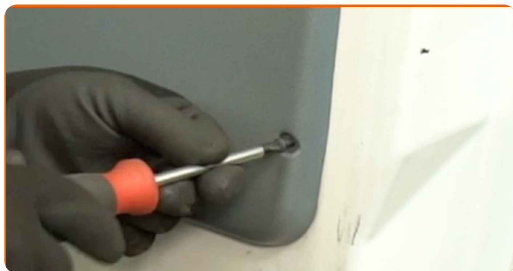
2 Unscrew the door card fasteners. Use a Phillips screwdriver.



3 Detach the door handle trim cover.



4 Remove the fastening screws.



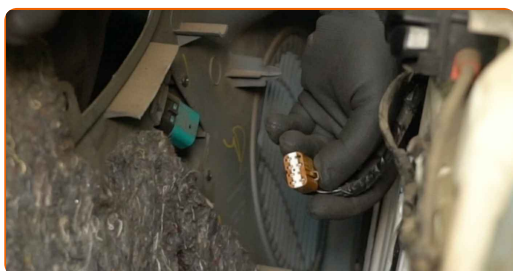
5 Detach the door card. Use a plastic trim removal tool.



Replacement: window regulator – Ford Transit Mk7 van. Tip:

- Do not apply excessive force when removing the part. Otherwise you may damage it.

6 Detach the connector from the power window switch.



7 Unscrew the fasteners of the speaker. Use a Phillips screwdriver.



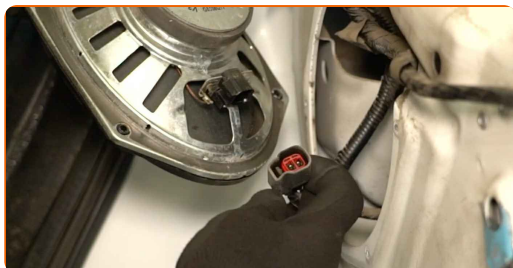
8 Remove the fastening screws.



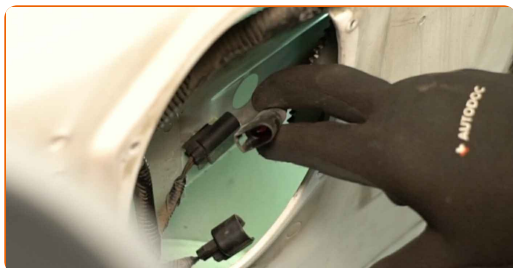
9 Remove the speaker.



10 Detach the connector from the speaker.



11 Detach the connector from the power window motor.



12 Secure the glass to the window frame. Use masking tape.

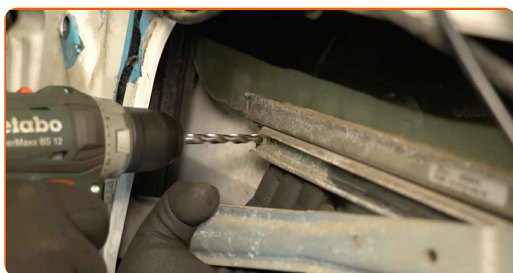


Caution!

- Hold the glass when raising and securing it to prevent it from being damaged and to avoid injury.

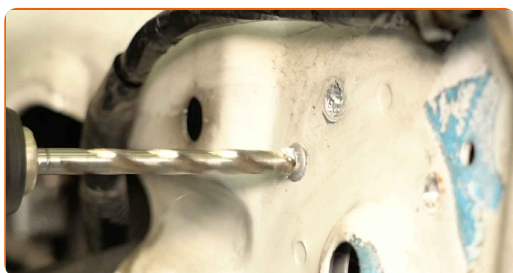
13

Drill out the rivets connecting the glass to the window regulator mechanism. Use a drill. Use a drill bit set.



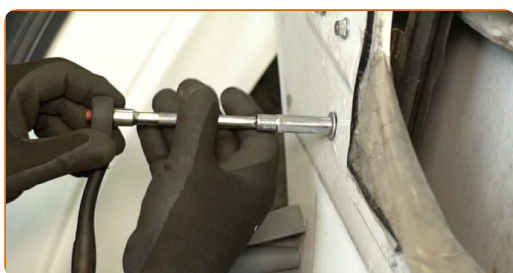
14

Drill out the rivets connecting the window regulator mechanism to the door. Use a drill. Use a drill bit set.

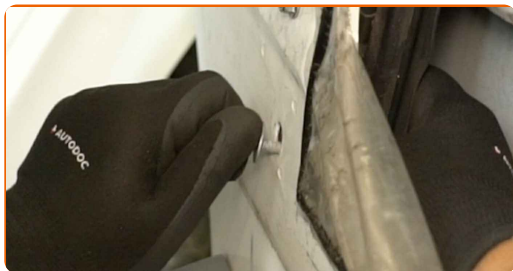


15

Unscrew the window guide rail fastener. Use an 8 mm socket. Use a ratchet wrench.



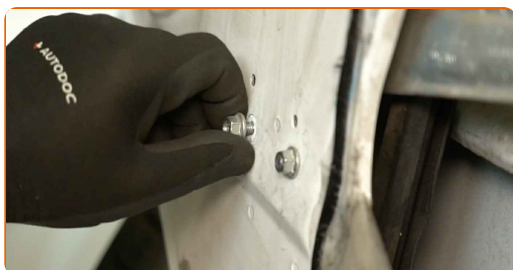
16 Remove the fastening bolt.



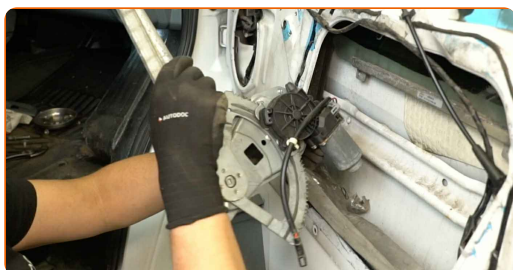
17 Unscrew the fasteners of the window regulator mechanism. Use a 10 mm socket. Use a ratchet wrench.



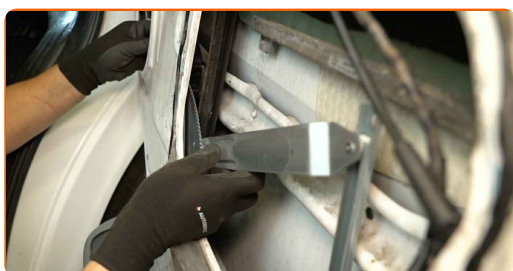
18 Remove the fastening bolts.



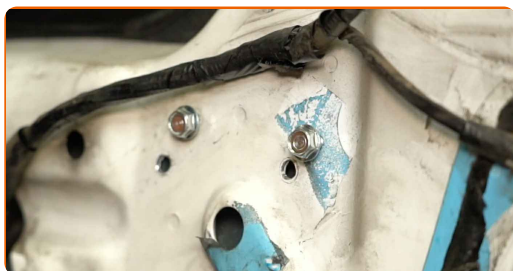
19 Remove the window regulator mechanism.



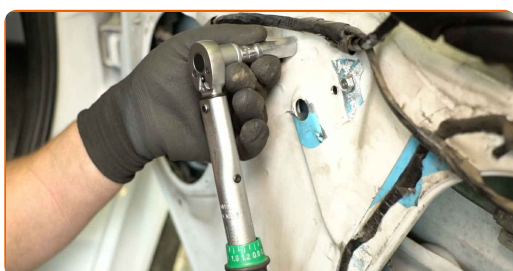
20 Install a new window regulator mechanism.



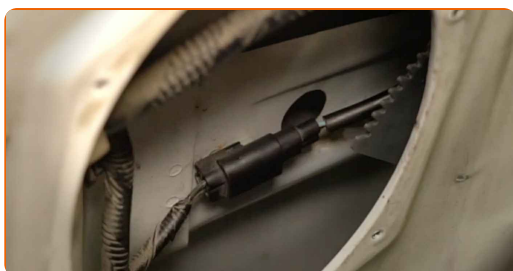
21 Install the fastening bolts.



22 Tighten the fasteners of the window regulator mechanism. Use a 10 mm socket. Use a torque wrench. Tightening torque: 8 N·m.



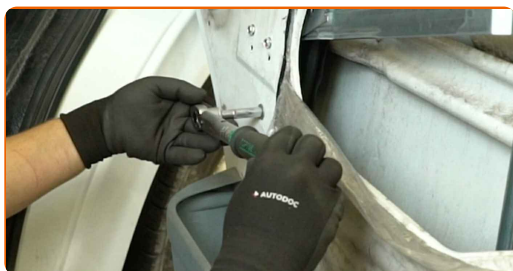
23 Attach the connector to the power window motor.



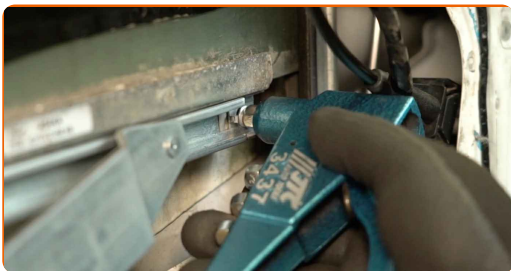
24 Install the fastening bolt of the window guide rail.



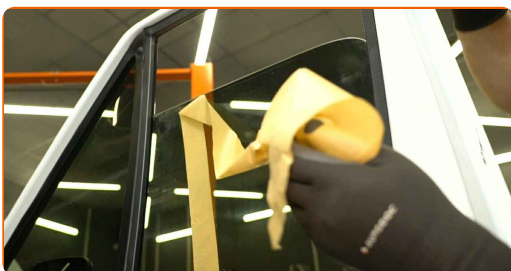
25 Tighten the window guide rail fastener. Use an 8 mm socket. Use a torque wrench. Tightening torque: 6 N·m.



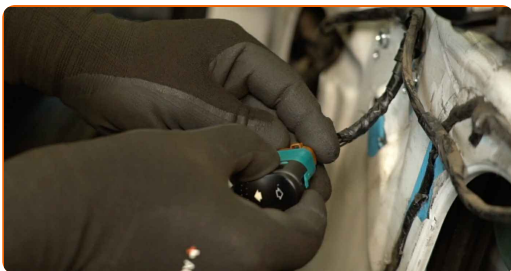
26 Install the rivets connecting the glass to the window regulator mechanism. Use a riveter. Use rivets.



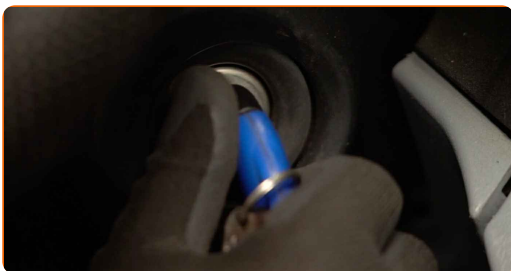
27 Remove the masking tape.



28 Attach the connector to the power window switch.



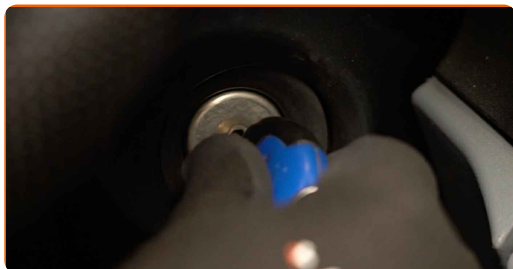
29 Switch on the ignition.



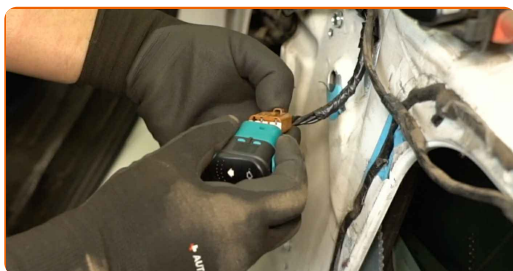
30 Check that the window regulator works correctly.



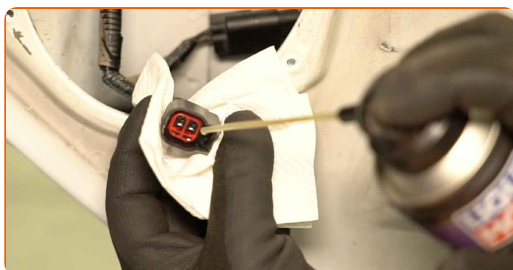
31 Switch off the ignition.



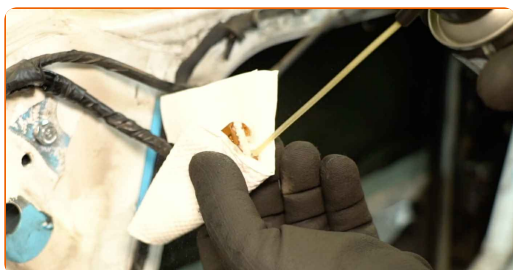
32 Detach the connector from the power window switch.



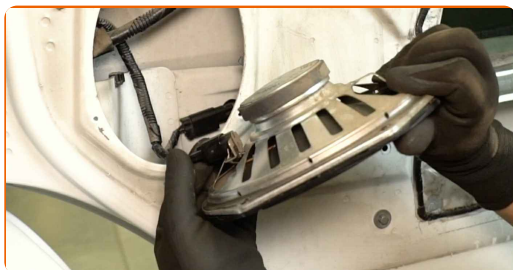
33 Treat the connector of the speaker. Use an electronic spray.



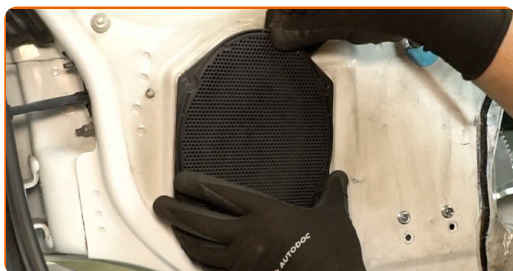
34 Treat the connector of the power window switch. Use an electronic spray.



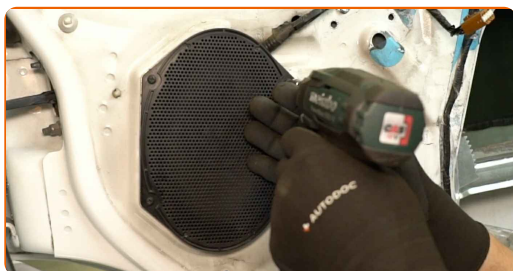
35 Attach the connector to the speaker.



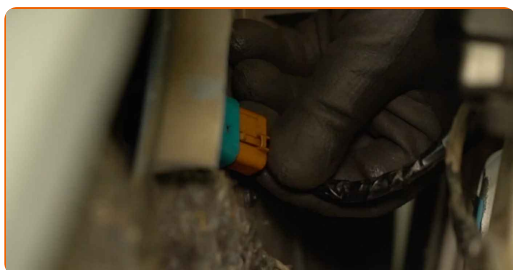
36 Install the speaker.



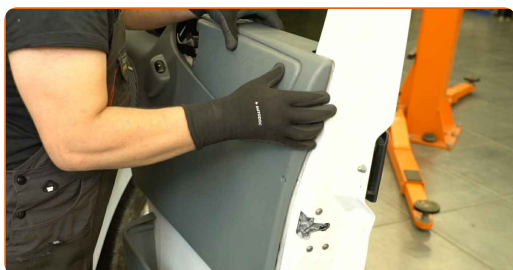
37 Install and screw in the fastening screws of the speaker. Use a Phillips screwdriver.



38 Attach the connector to the power window switch.



39 Reinstall the door card.



40 Attach the door handle trim cover.



41

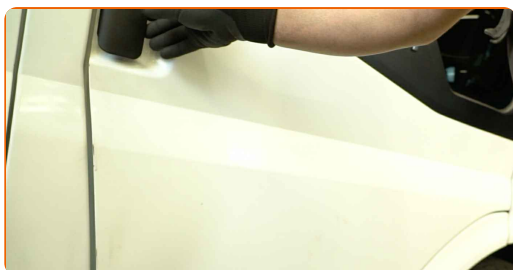
Install the fastening screws.

**42**

Tighten the door card fasteners. Use a Phillips screwdriver.

**43**

Close the car door.

**WELL DONE!** [VIEW MORE TUTORIALS](#)

AUTODOC – TOP QUALITY AND AFFORDABLE CAR PARTS ONLINE

AUTODOC MOBILE APP: GREAT DEALS AND CONVENIENT SHOPPING



+ AUTODOC

GET IT ON
Google Play

Download on the
App Store

Download

A GREAT SELECTION OF SPARE PARTS FOR YOUR CAR

BUY SPARE PARTS FOR FORD

WINDOW REGULATOR: A WIDE SELECTION

CHOOSE CAR PARTS FOR FORD TRANSIT MK7 VAN

WINDOW REGULATOR FOR FORD: BUY NOW

**WINDOW REGULATOR FOR FORD TRANSIT MK7 VAN: THE
BEST DEALS & OFFERS**

DISCLAIMER:

The document contains only general recommendations that may be useful for you when you perform repair or replacement work. AUTODOC shall not be liable for any loss, injury, damage of property occurring in the repair or replacement process due to incorrect use or misinterpretation of the provided information.

AUTODOC shall not be liable for any possible mistakes and uncertainties in this guide. The information provided is for information purposes only and cannot replace advice from specialists.

AUTODOC shall not be liable for incorrect or hazardous usage of equipment, tools and car parts. AUTODOC strongly recommends to be careful and observe the safety rules when performing repair or replacement works. Remember: usage of low quality auto parts does not guarantee you the appropriate level of road safety.

© Copyright 2024 – All the contents of this website, in particular texts, photographs and graphics, are protected by copyright. All rights, including reproduction, publication, editing and translation rights, are reserved by AUTODOC SE.