



How to change right
engine mounts on **FORD**
Focus Mk2 Box Body /
Estate – replacement
guide

SIMILAR VIDEO TUTORIAL



This video shows the replacement procedure of a similar car part on another vehicle

Important!

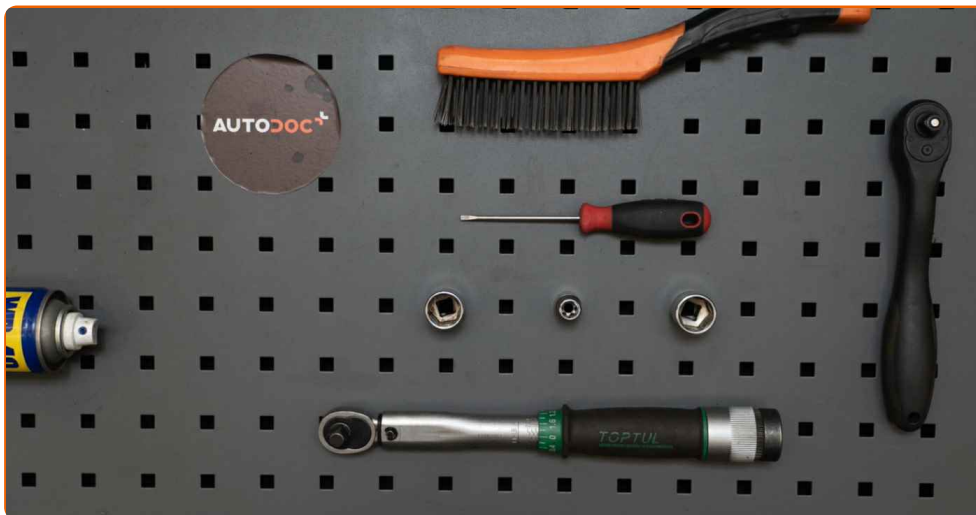
This replacement procedure can be used for:

FORD Focus Mk2 Box Body / Estate 1.6 TDCi, FORD Focus Mk2 Box Body / Estate 1.6 Ti-VCT, FORD Focus Mk2 Box Body / Estate 1.6, FORD Focus Mk2 Box Body / Estate 1.4

The steps may slightly vary depending on the car design.

This tutorial was created based on the replacement procedure for a similar car part on: FORD Focus II Saloon (DB_, FCH, DH) 1.6 TDCi

**REPLACEMENT: ENGINE MOUNTS – FORD FOCUS MK2
BOX BODY / ESTATE. TOOLS YOU MIGHT NEED:**



- Wire brush
- WD-40 spray
- Copper grease
- Torque wrench
- Drive socket # E11
- Drive socket # 16
- Drive socket # 18
- Ratchet wrench
- Jack
- Fender cover

Buy tools

Replacement: engine mounts – FORD Focus Mk2 Box Body / Estate. Tip:

- All work should be done with the engine stopped.

REPLACEMENT: ENGINE MOUNTS – FORD FOCUS MK2 BOX BODY / ESTATE. RECOMMENDED SEQUENCE OF STEPS:

1 Open the bonnet.

2 Use a fender protection cover to prevent damaging paintwork and plastic parts of the car.

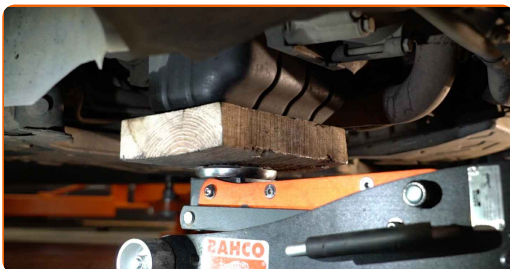
3 Remove the engine cover.



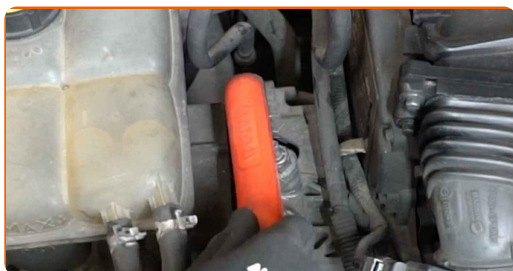
AUTODOC recommends:

- Replacement: engine mounts – FORD Focus Mk2 Box Body / Estate. Do not use excessive force when removing the part as this may damage it.

4 Support the engine in the oil pan area. Use a jack.



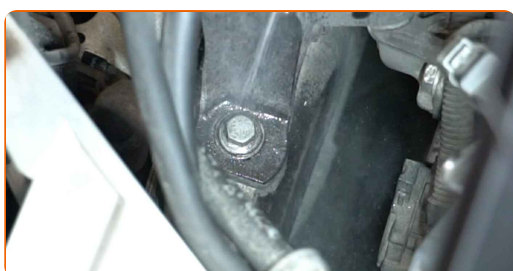
5 Clean the engine mount fasteners. Use a wire brush. Use WD-40 spray.



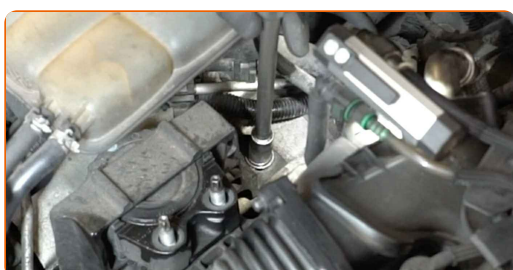
6 Unscrew the upper fastener of the engine mount. Use a drive socket #16. Use a ratchet wrench.



7 Clean the engine mount fasteners. Use a wire brush. Use WD-40 spray.



8 Unscrew the fasteners that connect the engine mount to the car body. Use a drive socket #18. Use a ratchet wrench.



9 Remove the hydraulic transmission jack.

10

Unscrew the engine mount fasteners. Use a drive socket #E11. Use a ratchet wrench.



11

Remove the engine mount.

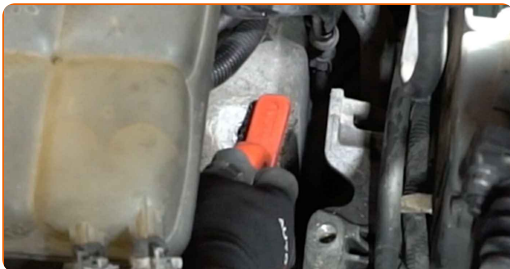


Replacement: engine mounts – FORD Focus Mk2 Box Body / Estate. Tip from AUTODOC:

- Carefully check the other engine mounts and replace them if necessary.

12

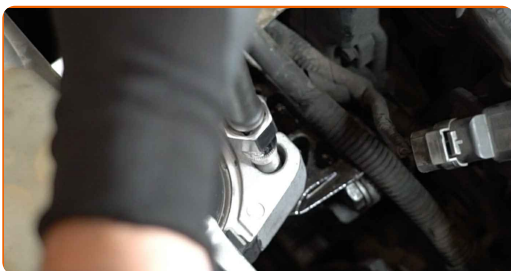
Clean the mounting seat of the engine mount. Use a wire brush. Use WD-40 spray.



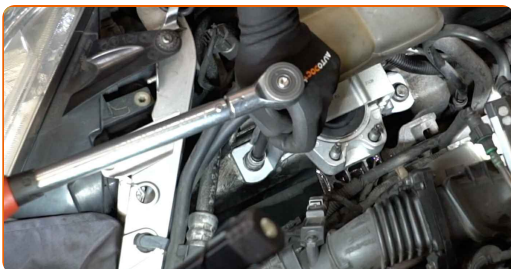
13 Install the engine mount to its mounting seat.



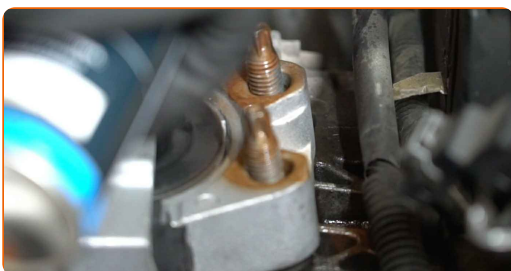
14 Tighten the engine mount fastening bolts. Use a drive socket #E11. Use a torque wrench. Tighten it to 32 Nm torque.



15 Tighten the fasteners that connect the engine mount to the car body. Use a drive socket #18. Use a torque wrench. Tighten it to 65 Nm torque.



16 Treat the engine mount fasteners. Use copper grease.



- 17** Tighten the upper fastener of the engine mount. Use a drive socket #16. Use a torque wrench. Tighten it to 55 Nm torque.



- 18** Treat the engine mount fasteners. Use copper grease.



- 19** Install the engine cover and secure it.



AUTODOC recommends:

- Replacement: engine mounts – FORD Focus Mk2 Box Body / Estate. Do not use excessive force during installation. This may damage the part.
- Make sure the engine cover is properly seated. It should not be displaced with respect to the guiding fasteners.

- 20** Remove the fender protection cover.

21

Close the hood.

WELL DONE! 

VIEW MORE TUTORIALS

AUTODOC – TOP QUALITY AND AFFORDABLE CAR PARTS ONLINE

AUTODOC MOBILE APP: GREAT DEALS AND CONVENIENT SHOPPING



+ AUTODOC

GET IT ON
Google Play

 Download on the
App Store

Download

A GREAT SELECTION OF SPARE PARTS FOR YOUR CAR

ENGINE MOUNTS: A WIDE SELECTION

DISCLAIMER:

The document contains only general recommendations that may be useful for you when you perform repair or replacement work. AUTODOC shall not be liable for any loss, injury, damage of property occurring in the repair or replacement process due to incorrect use or misinterpretation of the provided information.

AUTODOC shall not be liable for any possible mistakes and uncertainties in this guide. The information provided is for information purposes only and cannot replace advice from specialists.

AUTODOC shall not be liable for incorrect or hazardous usage of equipment, tools and car parts. AUTODOC strongly recommends to be careful and observe the safety rules when performing repair or replacement works. Remember: usage of low quality auto parts does not guarantee you the appropriate level of road safety.

© Copyright 2022 – All the contents of this website, in particular texts, photographs and graphics, are protected by copyright. All rights, including reproduction, publication, editing and translation rights, are reserved by AUTODOC GmbH.