



How to change wing
mirror on **FORD Focus II
Hatchback (DA_, HCP,
DP)** – replacement guide

SIMILAR VIDEO TUTORIAL



This video shows the replacement procedure of a similar car part on another vehicle

Important!

This replacement procedure can be used for:

FORD Focus II Hatchback (DA_, HCP, DP) 2.0 TDCi, FORD Focus II Hatchback (DA_, HCP, DP) 1.6, FORD Focus II Hatchback (DA_, HCP, DP) 1.6 Ti, FORD Focus II Hatchback (DA_, HCP, DP) 2.0, FORD Focus II Hatchback (DA_, HCP, DP) 1.4, FORD Focus II Hatchback (DA_, HCP, DP) 1.6 TDCi, FORD Focus II Hatchback (DA_, HCP, DP) 1.8 TDCi, FORD Focus II Hatchback (DA_, HCP, DP) 2.5 ST, FORD Focus II Hatchback (DA_, HCP, DP) 1.8 Flexifuel, FORD Focus II Hatchback (DA_, HCP, DP) 1.8, FORD Focus II Hatchback (DA_, HCP, DP) 2.5 RS, FORD Focus II Hatchback (DA_, HCP, DP) 2.0 CNG, FORD Focus II Hatchback (DA_, HCP, DP) 2.0 LPG, FORD Focus II Hatchback (DA_, HCP, DP) 1.6 LPG, FORD Focus II Hatchback (DA_, HCP, DP) 2.5 RS 500

The steps may slightly vary depending on the car design.

This tutorial was created based on the replacement procedure for a similar car part on: FORD Focus II Saloon (DB_, FCH, DH) 1.6 TDCi

REPLACEMENT: WING MIRROR – FORD FOCUS II HATCHBACK (DA_, HCP, DP). TOOLS YOU NEED:



- Torque wrench
- Drive socket # 10
- Torx bit T25
- Ratchet wrench
- Plastic trim tool
- Fender cover

Buy tools

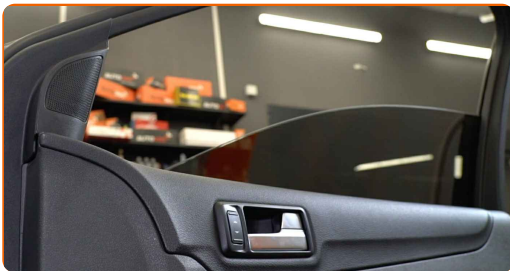
Replacement: wing mirror – FORD Focus II Hatchback (DA_, HCP, DP).
AUTODOC recommends:

- All work should be done with the engine stopped.

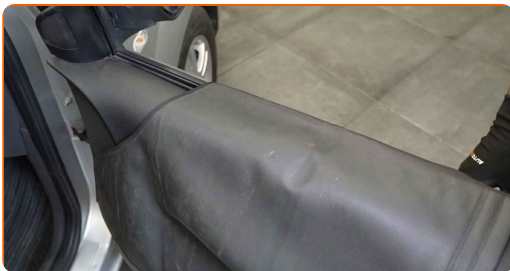
REPLACEMENT: WING MIRROR – FORD FOCUS II HATCHBACK (DA_, HCP, DP). RECOMMENDED SEQUENCE OF STEPS:

1 Open the car door.

2 Lower the window glass.



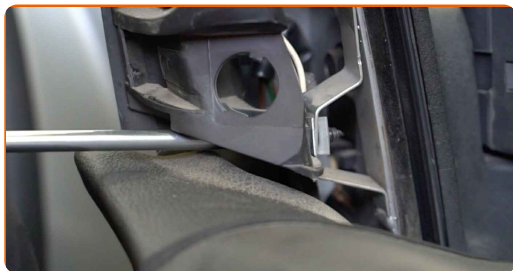
3 Use a fender protection cover to prevent damaging paintwork and plastic parts of the car.



4 Remove the wing mirror cover. Use a plastic trim tool.



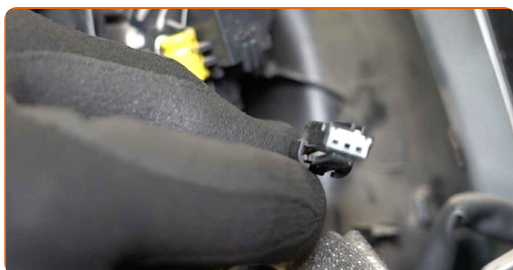
5 Unscrew the fasteners of the wing mirror trim panel. Use Torx T25.



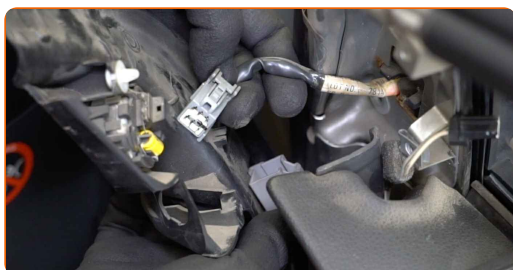
6 Detach the side mirror trim panel. Use a plastic trim tool.



7 Detach the speaker connector.



8 Detach the mirror adjuster connector from the door.



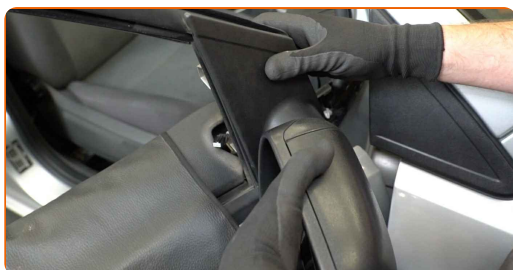
9 Remove the wing mirror screws. Use Torx T25. Use a drive socket #10. Use a ratchet wrench.



10 Remove the wing mirror.



11 Install the new wing mirror.



12 Tighten the screws of the wing mirror. Use Torx T25. Use a drive socket #10. Use a torque wrench. Tighten it to 5 Nm torque.



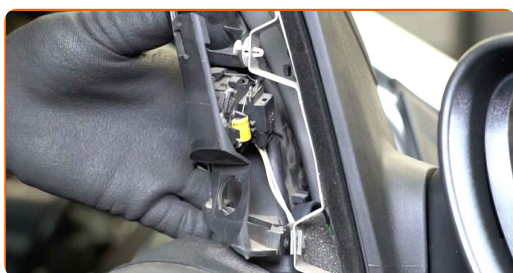
13 Attach the mirror adjuster connector to the door.



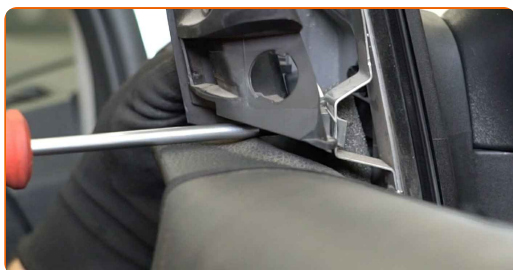
14 Attach the speaker connector.



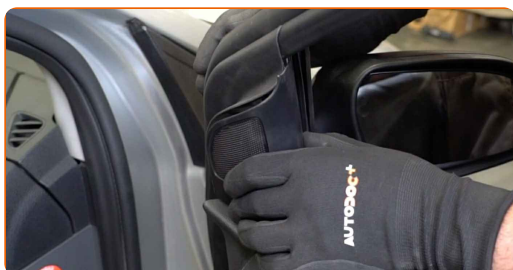
15 Attach the side mirror trim panel.



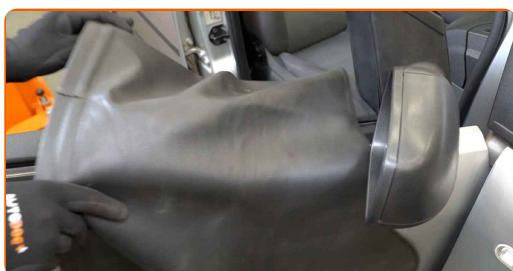
16 Screw in the fasteners of the wing mirror trim panel. Use Torx T25.



17 Install the wing mirror housing.



18 Remove the fender protection cover.



19

Switch on the ignition. This is necessary in order to make sure that the component operates properly.

**20**

Switch off the ignition.

21

Close the car door.

WELL DONE! 

VIEW MORE TUTORIALS

AUTODOC – TOP QUALITY AND AFFORDABLE CAR PARTS ONLINE

AUTODOC MOBILE APP: GREAT DEALS AND CONVENIENT SHOPPING



+ AUTODOC

GET IT ON
 **Google Play**

Download on the
 **App Store**

Download

A GREAT SELECTION OF SPARE PARTS FOR YOUR CAR

WING MIRROR: A WIDE SELECTION

DISCLAIMER:

The document contains only general recommendations that may be useful for you when you perform repair or replacement work. AUTODOC shall not be liable for any loss, injury, damage of property occurring in the repair or replacement process due to incorrect use or misinterpretation of the provided information.

AUTODOC shall not be liable for any possible mistakes and uncertainties in this guide. The information provided is for information purposes only and cannot replace advice from specialists.

AUTODOC shall not be liable for incorrect or hazardous usage of equipment, tools and car parts. AUTODOC strongly recommends to be careful and observe the safety rules when performing repair or replacement works. Remember: usage of low quality auto parts does not guarantee you the appropriate level of road safety.

© Copyright 2023 – All the contents of this website, in particular texts, photographs and graphics, are protected by copyright. All rights, including reproduction, publication, editing and translation rights, are reserved by AUTODOC SE.