



How to change rear
wheel bearing on **FORD**
FOCUS Estate (DNW) –
replacement guide

SIMILAR VIDEO TUTORIAL



This video shows the replacement procedure of a similar car part on another vehicle

Important!

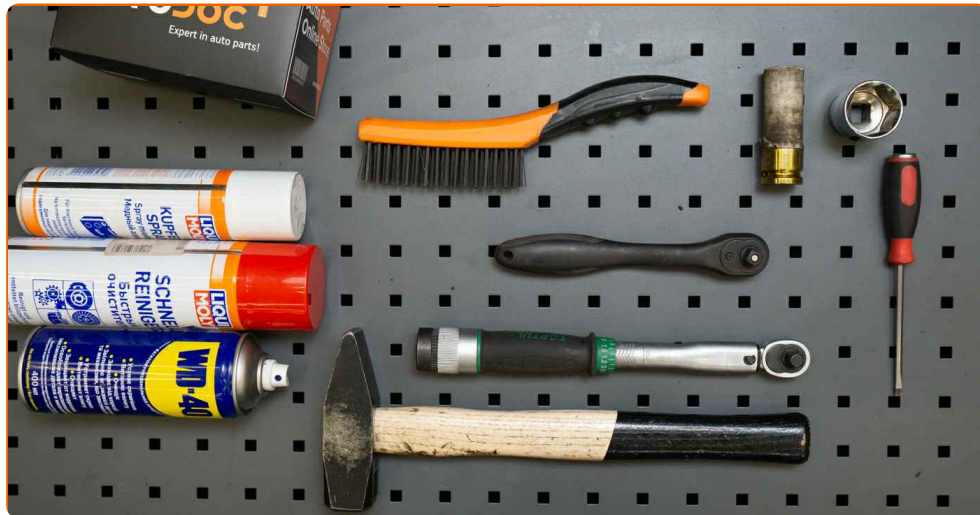
This replacement procedure can be used for:

FORD FOCUS Estate (DNW) 1.4 16V, FORD FOCUS Estate (DNW) 1.6 16V, FORD FOCUS Estate (DNW) 1.8 16V, FORD FOCUS Estate (DNW) 2.0 16V, FORD FOCUS Estate (DNW) 1.8 Turbo DI / TDDi, FORD FOCUS Estate (DNW) 1.8 DI / TDDi, FORD FOCUS Estate (DNW) 1.8 TDCi, FORD FOCUS Estate (DNW) ST170, FORD FOCUS Estate (DNW) 1.8 BiFuel, FORD FOCUS Estate (DNW) 1.6 16V Flexifuel

The steps may slightly vary depending on the car design.

This tutorial was created based on the replacement procedure for a similar car part on: FORD Fiesta Mk5 Hatchback (JH1, JD1, JH3, JD3) 1.4 16V

REPLACEMENT: WHEEL BEARING – FORD FOCUS ESTATE (DNW). LIST OF THE TOOLS YOU'LL NEED:



- Wire brush
- WD-40 spray
- Brake cleaner
- Copper grease
- Drive socket # 30
- Wheel impact socket #19
- Torque wrench
- Hammer
- Flat Screwdriver
- Bush and bearing driver set
- Circlip pliers
- Wheel chock

Buy tools

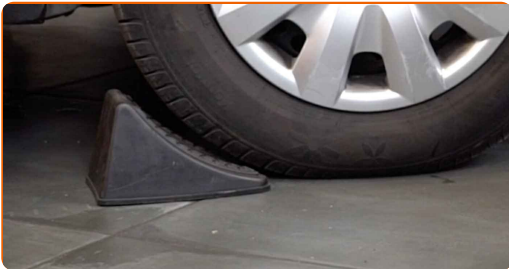
Replacement: wheel bearing – FORD FOCUS Estate (DNW). Tip from AUTODOC:

- Do not re-use the bearing assembly of your FORD FOCUS Estate (DNW) car.
- The wheel hub bearing replacement procedure is identical for both wheels on the same axle.
- All work should be done with the engine stopped.

**REPLACEMENT: WHEEL BEARING – FORD FOCUS ESTATE (DNW).
RECOMMENDED SEQUENCE OF STEPS:**

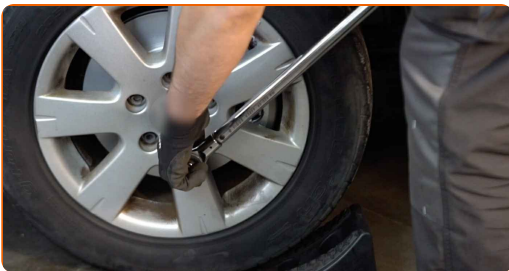
1

Secure the wheels with chocks.



2

Loosen the wheel mounting bolts. Use wheel impact socket #19.



3

Raise the rear of the car and secure on supports.

4

Unscrew the wheel bolts.



AUTODOC recommends:

- Important! Hold the wheel while unscrewing the fastening bolts. FORD FOCUS Estate (DNW)

5

Remove the wheel.



6

Clean the brake drum. Use a wire brush. Use WD-40 spray.

7

Remove the hub bearing protection cap. Use a flat screwdriver. Use a hammer.



Replacement: wheel bearing – FORD FOCUS Estate (DNW). AUTODOC recommends:

- Some cars are not equipped with wheel hub caps.

8

Clean the fasteners of the wheel hub bearing. Use a wire brush. Use WD-40 spray.



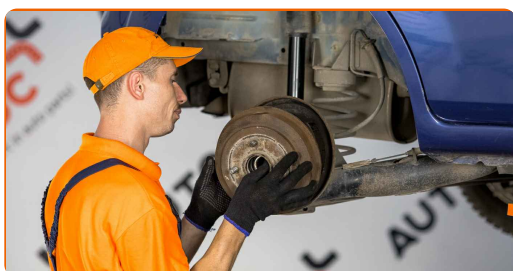
9

Unscrew the hub bearing mounting. Use a drive socket #30.



10

Remove the brake drum.



Replacement: wheel bearing – FORD FOCUS Estate (DNW). Professionals recommend:

- Examine the brake drum. Replace it if necessary.

11 Remove the wheel hub bearing retaining ring. Use circlip pliers.

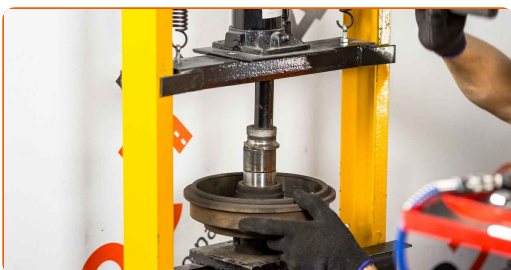


12 Press out the wheel hub bearing. Use a bush and bearing driver set.



13 Clean the hub bearing mounting seat. Use WD-40 spray.

14 Press a new bearing into the wheel hub. Use a bush and bearing driver set. Use a hammer.



AUTODOC recommends:

- Replacement: wheel bearing – FORD FOCUS Estate (DNW). Do not use excessive force during installation. This may damage the part.

15

Install the wheel hub bearing retaining ring. Use circlip pliers.



16

Treat the wheel hub in the area where it contacts the brake drum. Use copper grease.

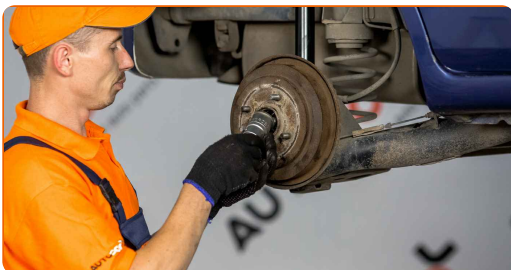
17

Install a brake drum.



18

Tighten the fastener of the wheel hub bearing. Use a drive socket #30. Use a torque wrench. Tighten it to 235 Nm torque.



Replacement: wheel bearing – FORD FOCUS Estate (DNW). AUTODOC experts recommend:

- The wheel bearing unit must not tilt on the axle pin.

19

Treat the fasteners of the wheel hub bearing. Use copper grease.

20 Install a new hub bearing protection cap. Use a hammer.



21 Treat the surface where the wheel rim contacts the brake drum. Use copper grease.



22 Clean the wheel rim mounting seat. Use a brake cleaner.

AUTODOC recommends:

- Replacement: wheel bearing – FORD FOCUS Estate (DNW). After applying the spray, wait a few minutes.

23 Install the wheel.



Replacement: wheel bearing – FORD FOCUS Estate (DNW). Tip from AUTODOC experts:

- To avoid injury, hold up the wheel when screwing in the fastening bolts.

24

Screw in the wheel bolts. Use wheel impact socket #19.

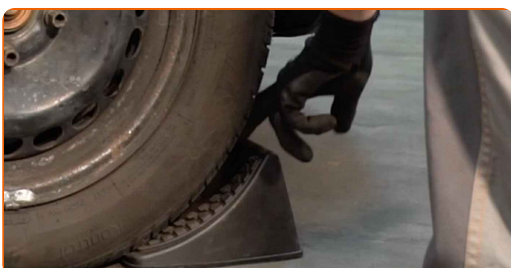


25

Lower the car and working in a cross order, tighten the wheel bolts. Use wheel impact socket #19. Use a torque wrench. Tighten it to 95 nm torque.

26

Remove the jacks and chocks.



WELL DONE! 

[VIEW MORE TUTORIALS](#)

AUTODOC – TOP QUALITY AND AFFORDABLE CAR PARTS ONLINE

AUTODOC MOBILE APP: GREAT DEALS AND CONVENIENT SHOPPING



+ AUTODOC

GET IT ON
Google Play

 Download on the
App Store

Download

A GREAT SELECTION OF SPARE PARTS FOR YOUR CAR

WHEEL BEARING: A WIDE SELECTION

DISCLAIMER:

The document contains only general recommendations that may be useful for you when you perform repair or replacement work. AUTODOC shall not be liable for any loss, injury, damage of property occurring in the repair or replacement process due to incorrect use or misinterpretation of the provided information.

AUTODOC shall not be liable for any possible mistakes and uncertainties in this guide. The information provided is for information purposes only and cannot replace advice from specialists.

AUTODOC shall not be liable for incorrect or hazardous usage of equipment, tools and car parts. AUTODOC strongly recommends to be careful and observe the safety rules when performing repair or replacement works. Remember: usage of low quality auto parts does not guarantee you the appropriate level of road safety.

© Copyright 2023 – All the contents of this website, in particular texts, photographs and graphics, are protected by copyright. All rights, including reproduction, publication, editing and translation rights, are reserved by AUTODOC SE.