



How to change rear strut
mount on **FORD C-MAX**
(DM2) – replacement
guide

SIMILAR VIDEO TUTORIAL



This video shows the replacement procedure of a similar car part on another vehicle

Important!

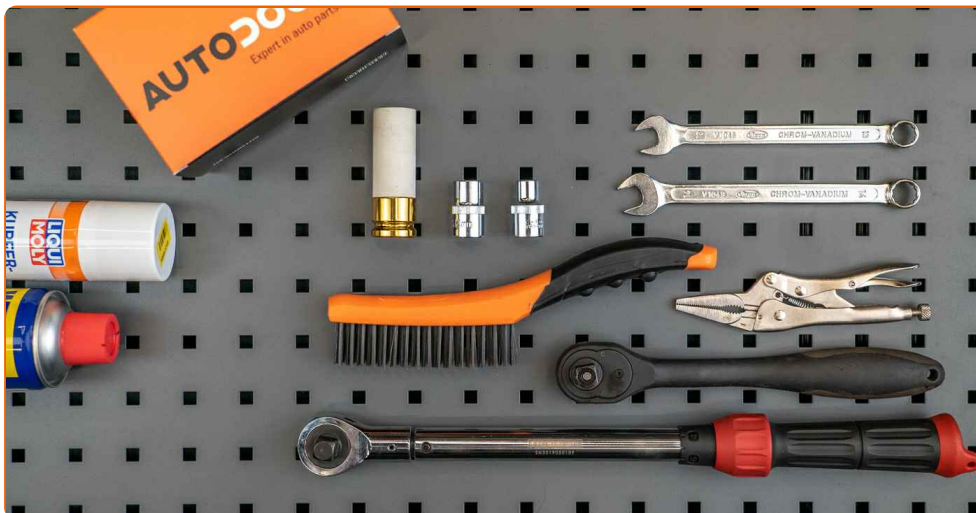
This replacement procedure can be used for:

FORD C-MAX (DM2) 1.6, FORD C-MAX (DM2) 1.8 Flexifuel, FORD C-MAX (DM2) 2.0, FORD C-MAX (DM2) 1.6 TDCi, FORD C-MAX (DM2) 2.0 TDCi, FORD C-MAX (DM2) 1.8 TDCi

The steps may slightly vary depending on the car design.

This tutorial was created based on the replacement procedure for a similar car part on: FORD Focus II Estate (DA_, FFS, DS) 1.4

REPLACEMENT: STRUT MOUNT – FORD C-MAX (DM2).
LIST OF THE TOOLS YOU'LL NEED:



- Wire brush
- WD-40 spray
- Copper grease
- Drive socket # 10
- Drive socket # 13
- Drive socket # 16
- Combination spanner #13
- Combination spanner #16
- Ratchet wrench
- Torque wrench
- Adjustable wrench
- Vice
- Wheel impact socket #19
- Hydraulic transmission jack
- Wheel chock

Buy tools

Replacement: strut mount – FORD C-MAX (DM2). Tip from AUTODOC experts:

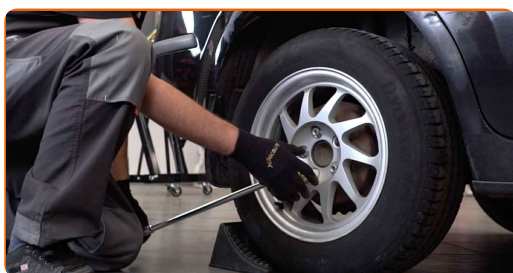
- The replacement procedure is identical for the mounts of the right and left shock absorbers of the rear suspension.
- Both mounts of the rear shock struts should be replaced simultaneously.
- All work should be done with the engine stopped.

REPLACEMENT: STRUT MOUNT – FORD C-MAX (DM2). TAKE THE FOLLOWING STEPS:

1 Secure the wheels with chocks.



2 Loosen the wheel mounting bolts. Use wheel impact socket #19.



3 Raise the rear of the car and secure on supports.

4

Unscrew the wheel bolts.



Replacement: strut mount – FORD C-MAX (DM2). AUTODOC recommends:

- To avoid injury, hold up the wheel when unscrewing the bolts.

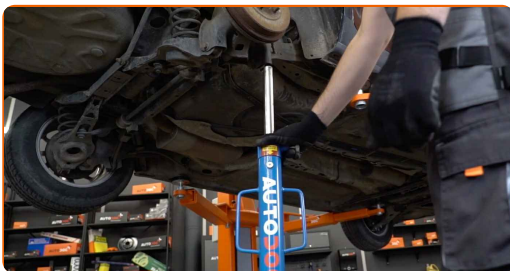
5

Remove the wheel.



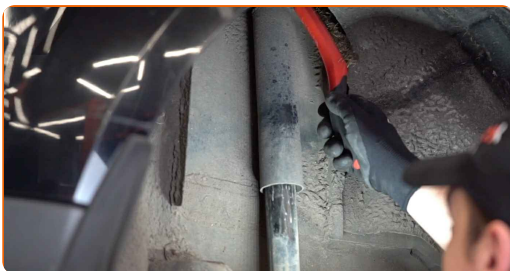
6

Support the arm. Use a hydraulic transmission jack.



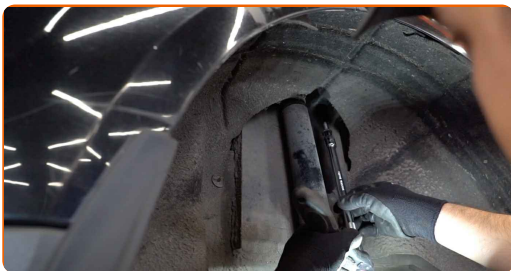
7

Clean the fasteners of the shock absorber upper mount. Use a wire brush. Use WD-40 spray.



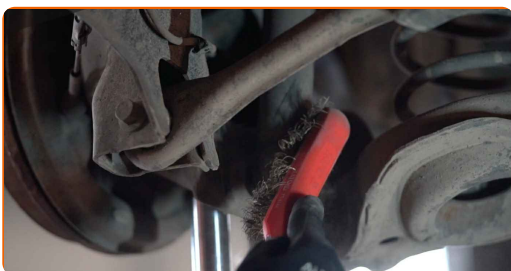
8

Unscrew the shock absorber mount fastening. Use a drive socket #10. Use a ratchet wrench.



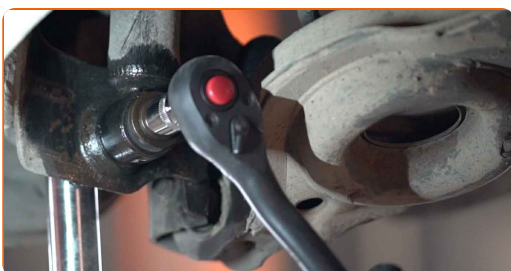
9

Clean the shock absorber fasteners. Use a wire brush. Use WD-40 spray.



10

Unscrew the lower fastener of the shock absorber. Use a drive socket #16. Use a ratchet wrench. Use a tap wrench.



AUTODOC recommends:

- Important! Hold the shock absorber while unscrewing the fastening bolts. FORD C-MAX (DM2)

11 Remove the shock absorber.



12 Grip the shock absorber in a vice.



13 Clean the shock absorber rod fastener. Use a wire brush. Use WD-40 spray.



14 Remove the shock absorber piston rod fastening. Use a combination spanner #13.



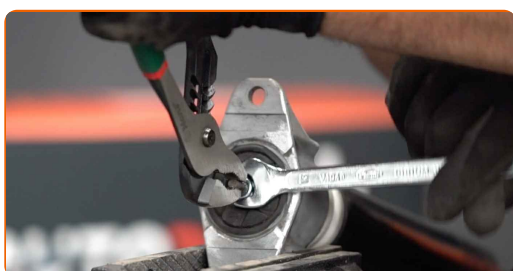
15 Remove the shock absorber mount, boot and bump stop.



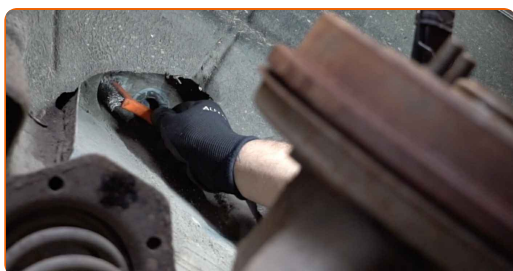
16 Install the new mount, boot, and bump stop on the shock absorber.



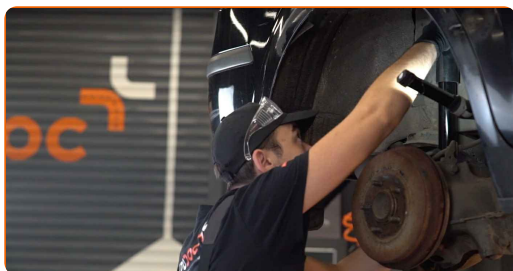
17 Screw the shock strut piston rod upper fastening. Use a combination spanner #13. Use a drive socket #13. Use an adjustable wrench. Use a torque wrench. Tighten it to 25 Nm torque.



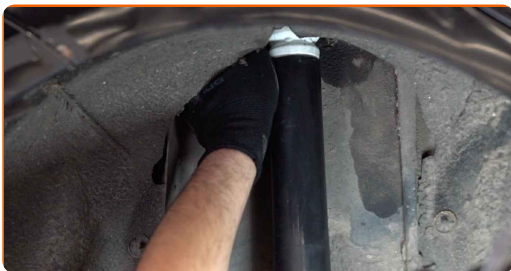
18 Clean the shock absorber mounting seats. Use a wire brush. Use WD-40 spray.



19 Place the shock absorber in the wheel arch and secure it.

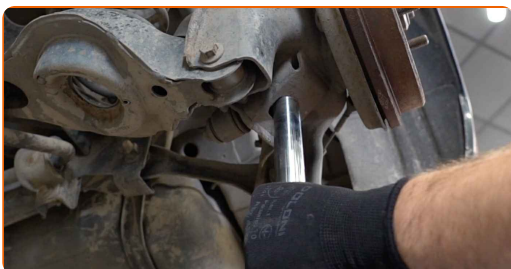


20 Install the shock absorber mount using the center hole as a guide.

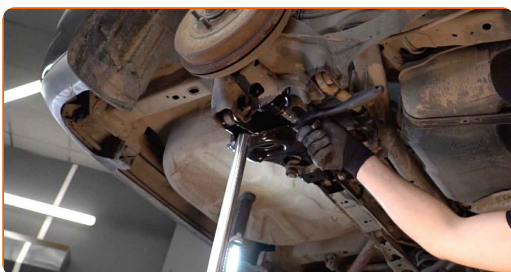


21 Screw in the shock absorber mount fastener. Use a drive socket #10. Use a ratchet wrench.

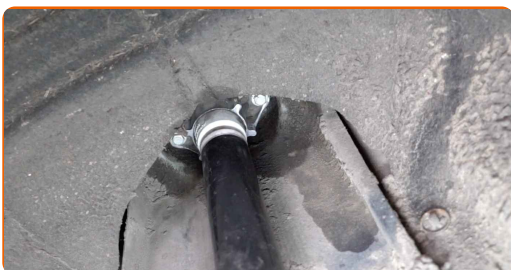
22 Support the arm. Use a hydraulic transmission jack.



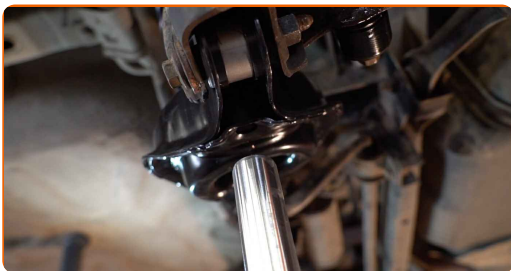
23 Tighten the lower fastener of the shock absorber. Use a drive socket #16. Use a torque wrench. Tighten it to 103 Nm torque.



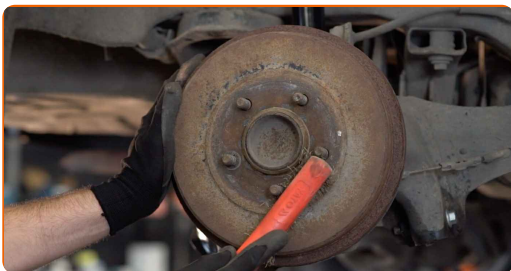
24 Tighten the shock absorber mount fasteners. Use a drive socket #10. Use a torque wrench. Tighten it to 25 Nm torque.



25 Remove the support from under the rear arm.



26 Clean the wheel rim mounting seat. Use a wire brush. Treat the contacting surface. Use copper grease.



27 Install the wheel.



Replacement: strut mount – FORD C-MAX (DM2). Tip:

- To avoid injury, hold up the wheel when screwing in the fastening bolts.

28 Screw in the wheel bolts. Use wheel impact socket #19.

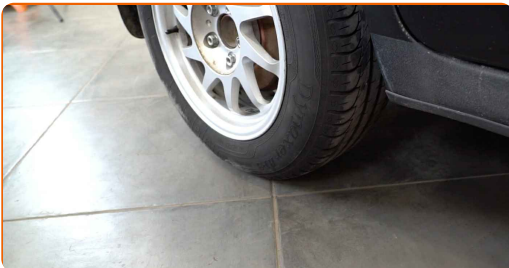


29

Lower the car and working in a cross order, tighten the wheel bolts. Use a torque wrench. Tighten it to 110 Nm torque.

**30**

Remove the jacks and chocks.



WELL DONE! 

VIEW MORE TUTORIALS

AUTODOC – TOP QUALITY AND AFFORDABLE CAR PARTS ONLINE

AUTODOC MOBILE APP: GREAT DEALS AND CONVENIENT SHOPPING



+ AUTODOC

GET IT ON
Google Play

 Download on the
App Store

Download

A GREAT SELECTION OF SPARE PARTS FOR YOUR CAR

STRUT MOUNT: A WIDE SELECTION

DISCLAIMER:

The document contains only general recommendations that may be useful for you when you perform repair or replacement work. AUTODOC shall not be liable for any loss, injury, damage of property occurring in the repair or replacement process due to incorrect use or misinterpretation of the provided information.

AUTODOC shall not be liable for any possible mistakes and uncertainties in this guide. The information provided is for information purposes only and cannot replace advice from specialists.

AUTODOC shall not be liable for incorrect or hazardous usage of equipment, tools and car parts. AUTODOC strongly recommends to be careful and observe the safety rules when performing repair or replacement works. Remember: usage of low quality auto parts does not guarantee you the appropriate level of road safety.

© Copyright 2022 – All the contents of this website, in particular texts, photographs and graphics, are protected by copyright. All rights, including reproduction, publication, editing and translation rights, are reserved by AUTODOC GmbH.