



How to change wing
mirror on **Ford Focus**
DAW – replacement
guide

VIDEO TUTORIAL



i Important!

This replacement procedure can be used for:

FORD FOCUS (DAW, DBW) 1.4 16V, FORD FOCUS (DAW, DBW) 1.6 16V, FORD FOCUS (DAW, DBW) 1.8 16V, FORD FOCUS Saloon (DFW) 1.4 16V, FORD FOCUS Saloon (DFW) 1.6 16V, FORD FOCUS Saloon (DFW) 1.8 16V, FORD FOCUS Estate (DNW) 1.4 16V, FORD FOCUS Estate (DNW) 1.6 16V, FORD FOCUS Estate (DNW) 1.8 16V, FORD FOCUS (DAW, DBW) 2.0 16V, FORD FOCUS (DAW, DBW) 1.8 Turbo DI / TDDi, FORD FOCUS Saloon (DFW) 2.0 16V, FORD FOCUS Saloon (DFW) 1.8 Turbo DI / TDDi, FORD FOCUS Estate (DNW) 2.0 16V, FORD FOCUS Estate (DNW) 1.8 Turbo DI / TDDi, (+ 15)

The steps may slightly vary depending on the car design.

REPLACEMENT: WING MIRROR – FORD FOCUS DAW. TOOLS YOU NEED:



- WD-40 spray
- Electronic spray
- Torque wrench
- Drive socket # 10
- Ratchet wrench
- Clip removal tool
- Plastic trim tool
- Fender cover

BUY TOOLS

Replacement: wing mirror – Ford Focus DAW. AUTODOC experts recommend:

- All work should be done with the engine stopped.

REPLACEMENT: WING MIRROR – FORD FOCUS DAW. RECOMMENDED SEQUENCE OF STEPS:

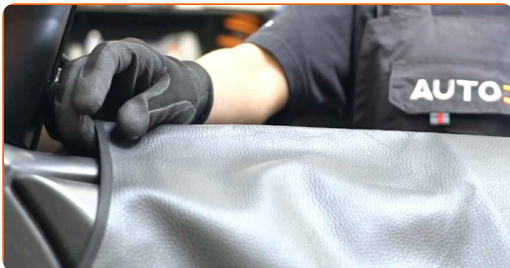
1

Open the car door.



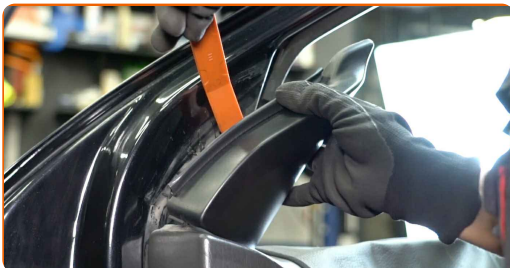
2

Use a fender protection cover to prevent damaging paintwork and plastic parts of the car.

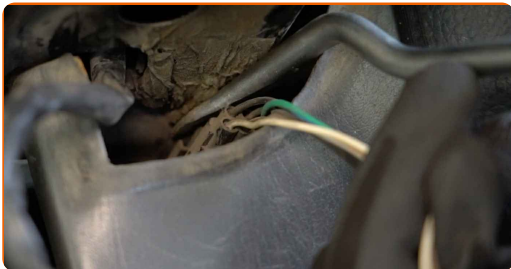


3

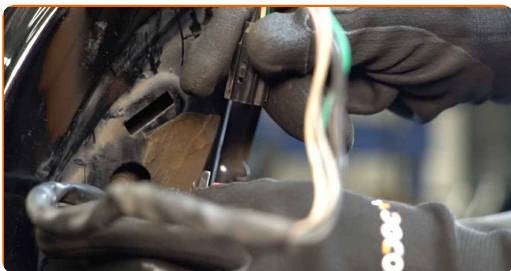
Remove the wing mirror cover. Use a plastic trim tool.



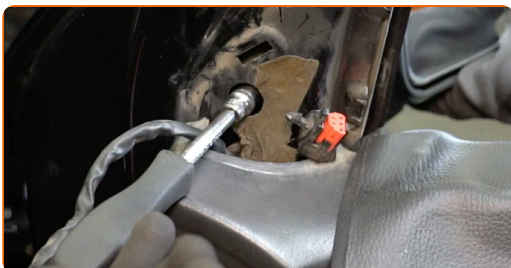
4 Disconnect the wiring of the wing mirror. Use a clip removal tool.



5 Detach the mirror adjuster connector from the door.



6 Remove the wing mirror screws. Use a drive socket #10. Use a ratchet wrench.



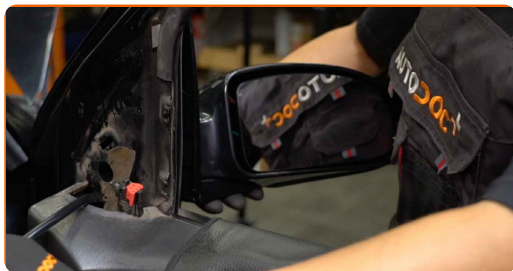
7 Remove the wing mirror.



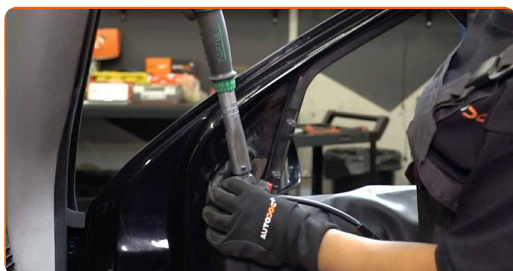
8 Clean the wing mirror mounting seat. Use WD-40 spray.



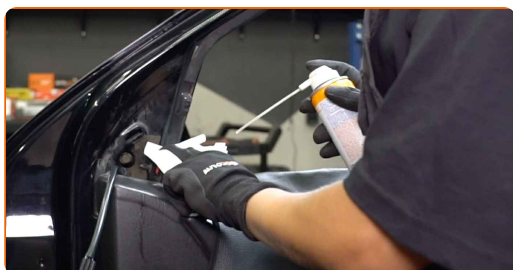
9 Install the new wing mirror.



10 Tighten the screws of the wing mirror. Use a drive socket #10. Use a torque wrench. Tighten it to 8 Nm torque.



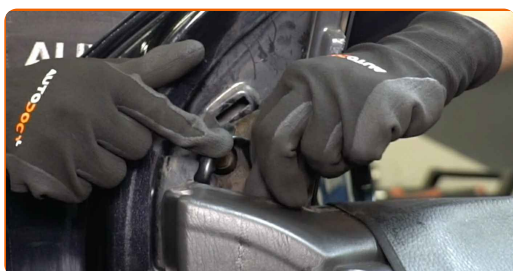
11 Treat the connector of the power mirror switch. Use dielectric grease.



12 Attach the mirror adjuster connector to the door.

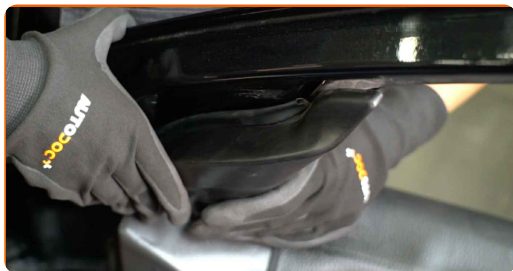


13 Connect the wiring of the wing mirror.



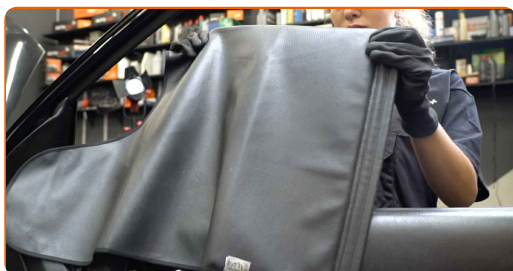
14

Install the wing mirror housing.



15

Remove the fender protection cover.



16

Close the car door.



17

Switch on the ignition. This is necessary in order to make sure that the component operates properly.

18

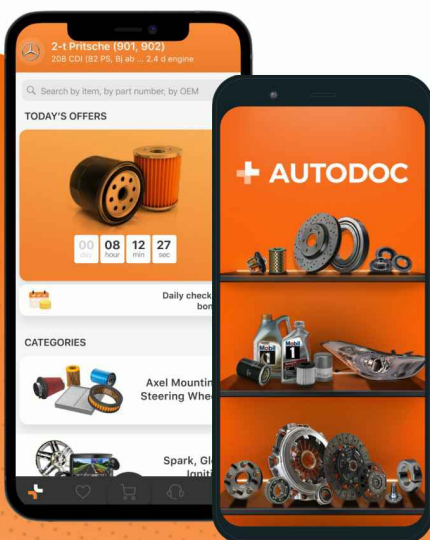
Switch off the ignition.

WELL DONE! 

VIEW MORE TUTORIALS

AUTODOC – TOP QUALITY AND AFFORDABLE CAR PARTS ONLINE

AUTODOC MOBILE APP: GREAT DEALS AND CONVENIENT SHOPPING



+ AUTODOC

GET IT ON
Google Play

Download on the
App Store

Download

A GREAT SELECTION OF SPARE PARTS FOR YOUR CAR

BUY SPARE PARTS FOR FORD

WING MIRROR: A WIDE SELECTION

CHOOSE CAR PARTS FOR FORD FOCUS DAW

WING MIRROR FOR FORD: BUY NOW

WING MIRROR FOR FORD FOCUS DAW: THE BEST DEALS & OFFERS

DISCLAIMER:

The document contains only general recommendations that may be useful for you when you perform repair or replacement work. AUTODOC shall not be liable for any loss, injury, damage of property occurring in the repair or replacement process due to incorrect use or misinterpretation of the provided information.

AUTODOC shall not be liable for any possible mistakes and uncertainties in this guide. The information provided is for information purposes only and cannot replace advice from specialists.

AUTODOC shall not be liable for incorrect or hazardous usage of equipment, tools and car parts. AUTODOC strongly recommends to be careful and observe the safety rules when performing repair or replacement works. Remember: usage of low quality auto parts does not guarantee you the appropriate level of road safety.

© Copyright 2022 – All the contents of this website, in particular texts, photographs and graphics, are protected by copyright. All rights, including reproduction, publication, editing and translation rights, are reserved by AUTODOC GmbH.