



How to change wing  
mirror on **Ford Fiesta**  
**JA8** – replacement guide

## VIDEO TUTORIAL

** Important!**

This replacement procedure can be used for:

FORD Fiesta Mk6 Hatchback (JA8, JR8) 1.6 Ti, FORD Fiesta Mk6 Hatchback (JA8, JR8) 1.4 TDCi, FORD Fiesta Mk6 Van 1.4 TDCi, FORD Fiesta Mk6 Van 1.6 TDCi, FORD Fiesta Mk6 Hatchback (JA8, JR8) 1.25, FORD Fiesta Mk6 Hatchback (JA8, JR8) 1.6 TDCi, FORD Fiesta Mk6 Hatchback (JA8, JR8) 1.4, FORD Fiesta Mk6 Hatchback (JA8, JR8) 1.4 LPG, FORD Fiesta Mk6 Van 1.25, FORD B-Max (JK8) 1.0 EcoBoost, FORD B-Max (JK8) 1.6 Ti, FORD B-Max (JK8) 1.6 TDCi, FORD B-Max (JK8) 1.4, FORD B-Max (JK8) 1.5 TDCi, FORD Fiesta Mk6 Hatchback (JA8, JR8) 1.0, (+ 17)

The steps may slightly vary depending on the car design.

REPLACEMENT: WING MIRROR – FORD FIESTA JA8.  
LIST OF THE TOOLS YOU'LL NEED:



- Drive socket # 10
- Drive socket # 13
- Torx bit T20
- Torx bit T25
- Ratchet wrench
- Torque wrench
- Flat Screwdriver
- Plastic trim tool

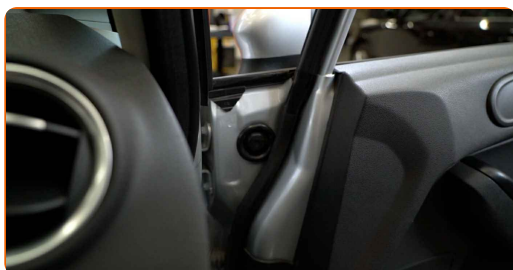
**BUY TOOLS**

Replacement: wing mirror – Ford Fiesta JA8. AUTODOC recommends:

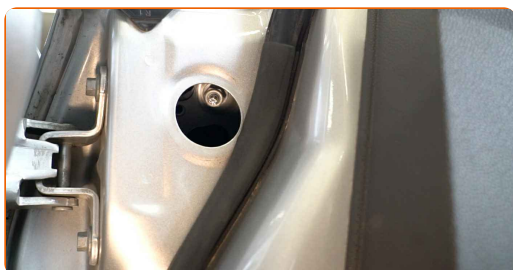
- All work should be done with the engine stopped.

## REPLACEMENT: WING MIRROR – FORD FIESTA JA8. TAKE THE FOLLOWING STEPS:

**1** Open the car door.



**2** Remove the wing mirror screw cap cover.



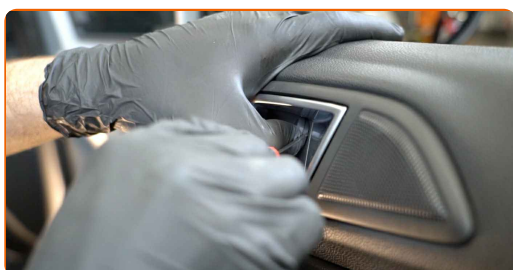
**3** Detach the door armrest panel. Use a plastic trim tool.



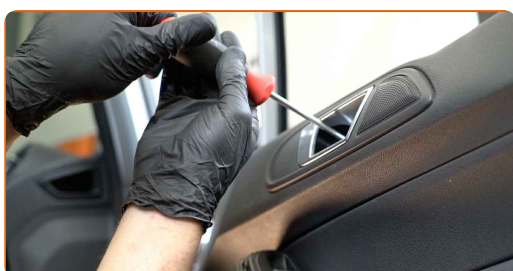
**4** Remove the door armrest screws. Use Torx T25. Use a ratchet wrench.



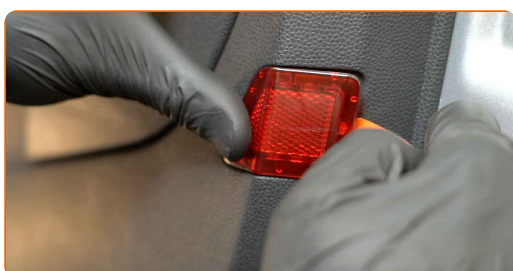
**5** Remove the door handle screw cap cover. Use a flat screwdriver.



**6** Remove the door handle screw. Use Torx T20. Use a ratchet wrench.

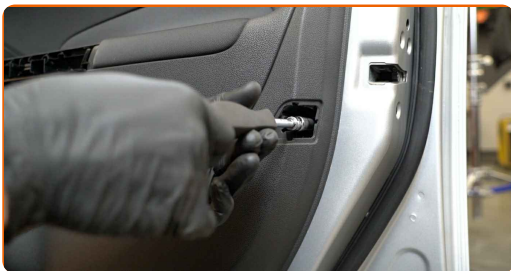


**7** Remove the door card reflector. Use a plastic trim tool.



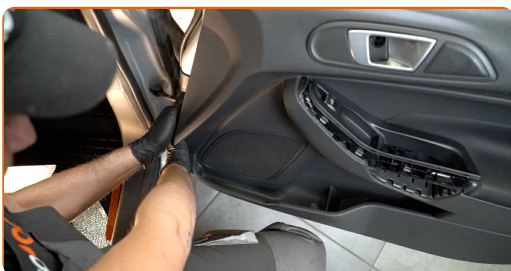
8

Unscrew the door card fasteners. Use a drive socket #10. Use a ratchet wrench.



9

Detach the door card. Use a plastic trim tool.

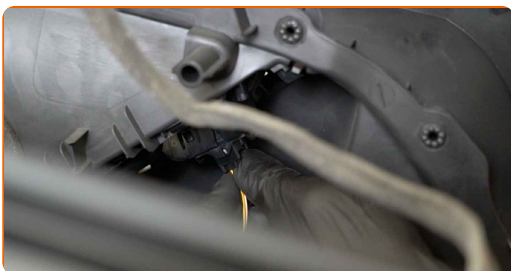


Replacement: wing mirror – Ford Fiesta JA8. Tip:

- Do not apply excessive force when removing the part. Otherwise you may damage it.

10

Remove the door card clips. Use a plastic trim tool.



11

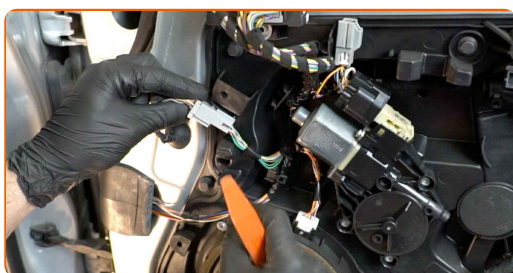
Detach the window switch connector from the control unit.



**12** Remove the door card.

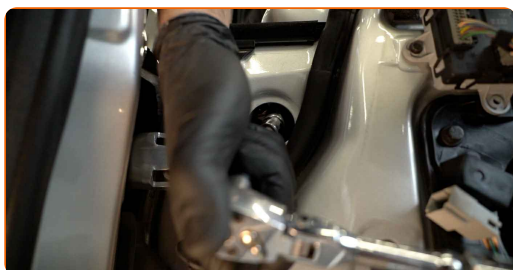


**13** Detach the mirror adjuster connector from the control unit.

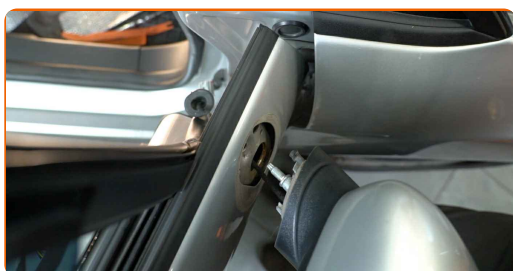


**14** Detach the mirror adjuster connector from the door. Use a plastic trim tool.

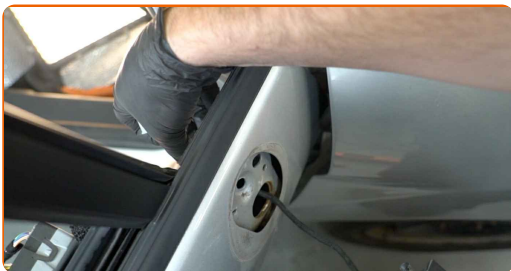
**15** Remove the wing mirror screws. Use a drive socket #13. Use a ratchet wrench.



**16** Remove the wing mirror.



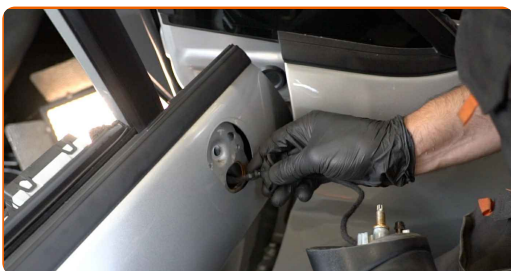
**17** Disconnect the wiring of the wing mirror.



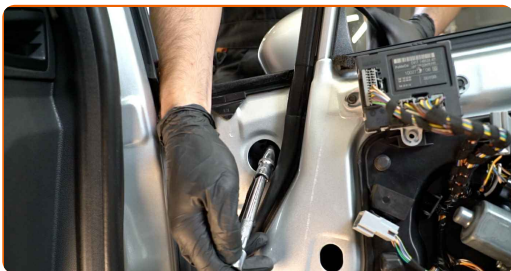
Replacement: wing mirror – Ford Fiesta JA8. Tip from AUTODOC experts:

- Be careful! Do not damage the wiring of the wing mirror.

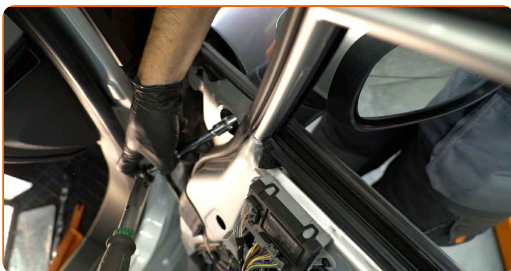
**18** Connect the wiring of the wing mirror.



**19** Install the new wing mirror.

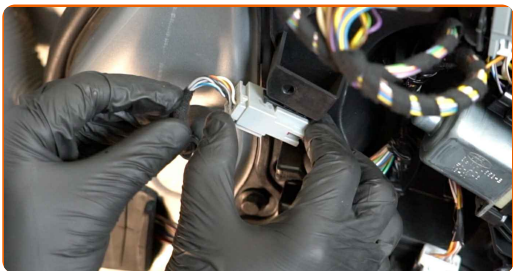


**20** Tighten the screws of the wing mirror. Use a drive socket #13. Use a torque wrench. Tighten it to 22 Nm torque.

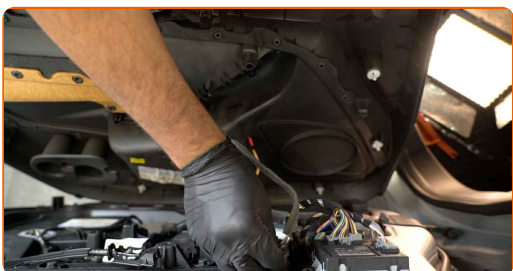




**21** Attach the mirror adjuster connector to the door.



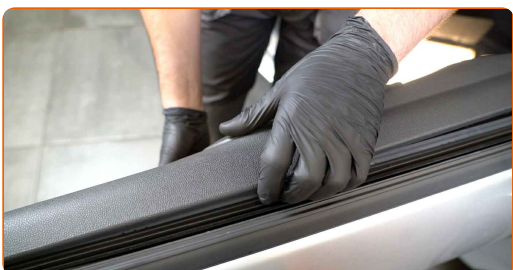
**22** Attach the mirror adjuster connector to the control unit.



**23** Attach the window switch connector to the control unit.



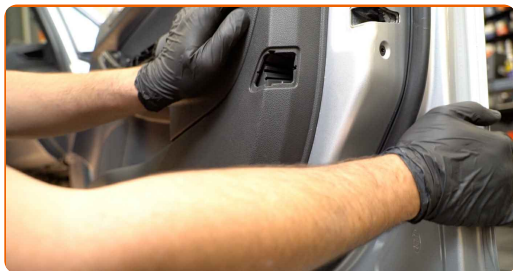
**24** Reinstall the door card.



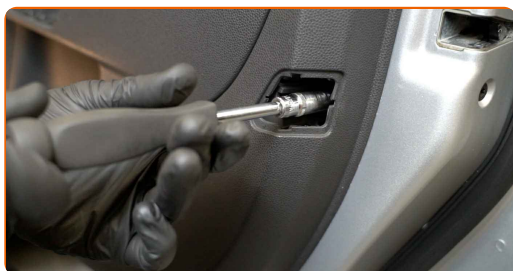
**AUTODOC recommends:**

- Caution! Do not use excessive force during installation. This may damage the fasteners of the car. Ford Fiesta JA8

**25** Reinstall the door card clips. Make sure you hear a click indicating that it is locked in place.



**26** Screw in the door card fasteners. Use a drive socket #10. Use a ratchet wrench.



**27** Reinstall the door card reflector. Make sure you hear a click indicating that it is locked in place.

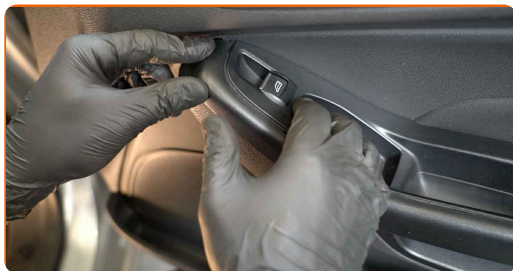


**28** Screw in the door armrest fasteners. Use Torx T25. Use a ratchet wrench.



29

Reinstall the door armrest panel. Make sure you hear a click indicating that it is locked in place.



30

Screw in the door handle fastener. Use Torx T20. Use a ratchet wrench.



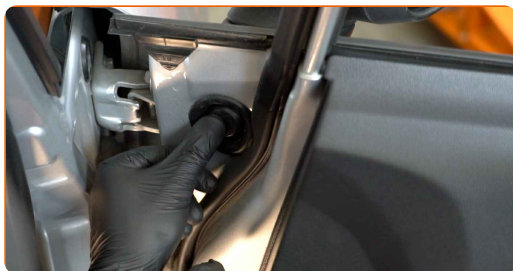
31

Reinstall the door handle screw cap cover.



32

Install the wing mirror screw cap cover.



33

Close the car door.



**WELL DONE!** 

**VIEW MORE TUTORIALS**

# AUTODOC – TOP QUALITY AND AFFORDABLE CAR PARTS ONLINE

**AUTODOC MOBILE APP: GREAT DEALS AND CONVENIENT SHOPPING**



**+ AUTODOC**

GET IT ON  
**Google Play**

Download on the  
**App Store**

**Download**

**A GREAT SELECTION OF SPARE PARTS FOR YOUR CAR**

**BUY SPARE PARTS FOR FORD**

**WING MIRROR: A WIDE SELECTION**

**CHOOSE CAR PARTS FOR FORD FIESTA JA8**

**WING MIRROR FOR FORD: BUY NOW**

**WING MIRROR FOR FORD FIESTA JA8: THE BEST DEALS & OFFERS**

### **DISCLAIMER:**

The document contains only general recommendations that may be useful for you when you perform repair or replacement work. AUTODOC shall not be liable for any loss, injury, damage of property occurring in the repair or replacement process due to incorrect use or misinterpretation of the provided information.

AUTODOC shall not be liable for any possible mistakes and uncertainties in this guide. The information provided is for information purposes only and cannot replace advice from specialists.

AUTODOC shall not be liable for incorrect or hazardous usage of equipment, tools and car parts. AUTODOC strongly recommends to be careful and observe the safety rules when performing repair or replacement works. Remember: usage of low quality auto parts does not guarantee you the appropriate level of road safety.

© Copyright 2022 – All the contents of this website, in particular texts, photographs and graphics, are protected by copyright. All rights, including reproduction, publication, editing and translation rights, are reserved by AUTODOC GmbH.