



How to change pollen  
filter on **FIAT Doblo  
Estate (119\_, 223\_)** –  
replacement guide

### SIMILAR VIDEO TUTORIAL



This video shows the replacement procedure of a similar car part on another vehicle

#### **Important!**

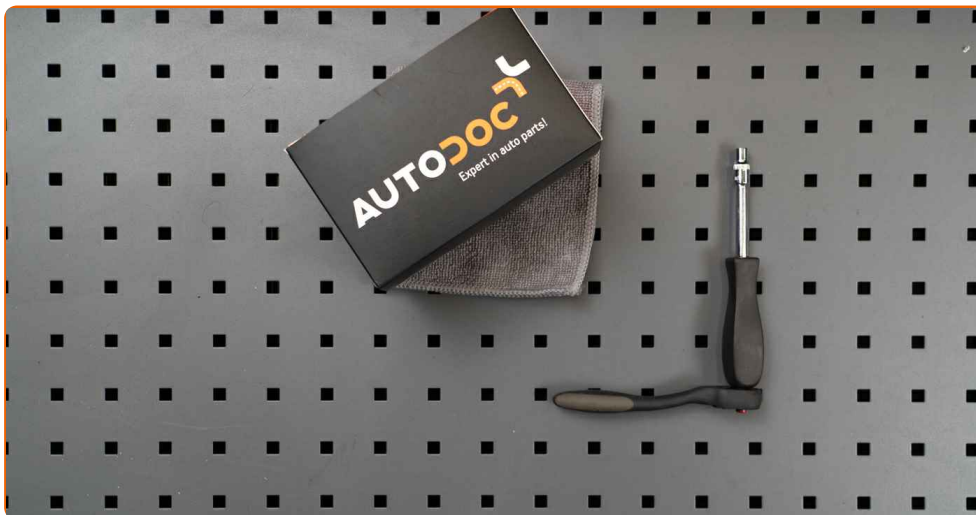
This replacement procedure can be used for:

FIAT Doblo Estate (119\_, 223\_) 1.2, FIAT Doblo Estate (119\_, 223\_) 1.9 D, FIAT Doblo Estate (119\_, 223\_) 1.9 JTD, FIAT Doblo Estate (119\_, 223\_) 1.6 16V, FIAT Doblo Estate (119\_, 223\_) 1.3 D Multijet, FIAT Doblo Estate (119\_, 223\_) 1.9 D Multijet, FIAT Doblo Estate (119\_, 223\_) 1.4, FIAT Doblo Estate (119\_, 223\_) 1.6 Natural Power, FIAT Doblo Estate (119\_, 223\_) 1.6, FIAT Doblo Estate (119\_, 223\_) 1.3 JTD, FIAT Doblo Estate (119\_, 223\_) 1.3 JTD 16V, FIAT Doblo Estate (119\_, 223\_) 1.6 Natural Power (223AXD1A)

The steps may slightly vary depending on the car design.

This tutorial was created based on the replacement procedure for a similar car part on: FIAT PUNTO (188) 1.2 60

REPLACEMENT: POLLEN FILTER – FIAT DOBLO ESTATE  
(119\_, 223\_). TOOLS YOU MIGHT NEED:



• Drive socket # 6

• Ratchet wrench

[Buy tools](#)

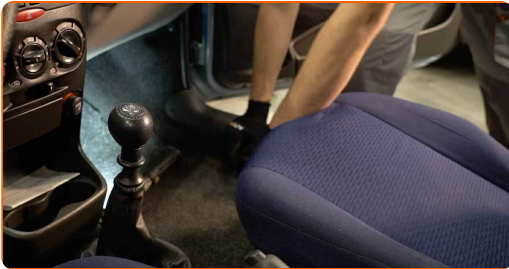
Replacement: pollen filter – FIAT Doblo Estate (119\_, 223\_). AUTODOC experts recommend:

- Replace the cabin filter at least once every six months, in early spring and autumn seasons.
- Follow the terms, recommendations and requirements of the part operation provided by the manufacturer.
- If the air flow into the cabin has sharply reduced, replace the filter before a scheduled maintenance.
- All work should be done with the engine stopped.

## REPLACEMENT: POLLEN FILTER – FIAT DOBLO ESTATE (119\_, 223\_). RECOMMENDED SEQUENCE OF STEPS:

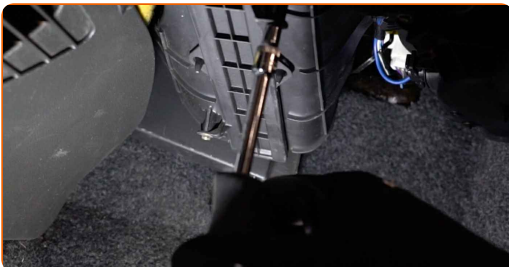
1

Move the passenger seat fully backwards.



2

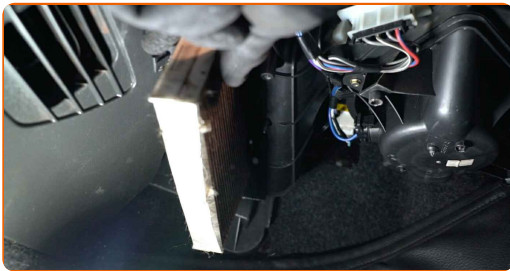
Unscrew the fasteners of the cabin filter housing cover. Use a drive socket #6. Use a ratchet wrench.



**3** Remove the cabin filter housing cover.



**4** Remove the cabin filter.



Replacement: pollen filter – FIAT Doblo Estate (119\_, 223\_). Tip from AUTODOC experts:

- Do not attempt to clean and reuse the filter - it will affect the quality of air cleaning inside the car.

**5** Install the cabin filter to its mounting seat.

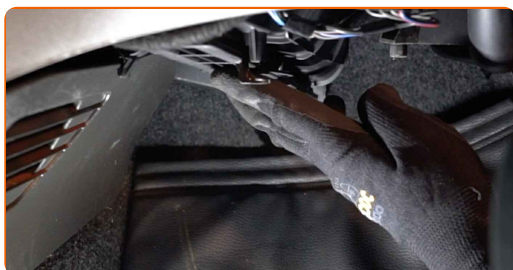


**AUTODOC recommends:**

- Replacement: pollen filter – FIAT Doblo Estate (119\_, 223\_). Be sure to position the filtering element correctly. Avoid misalignment.
- Follow the air flow direction arrow on the filter.
- Attention! Use quality filters – FIAT Doblo Estate (119\_, 223\_).

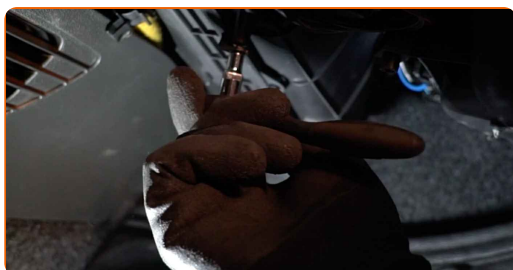
**6**

Reinstall the cabin filter housing cover.



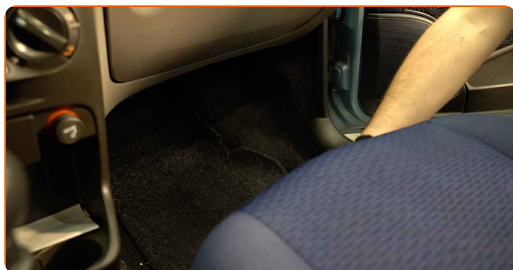
**7**

Screw in the fasteners of the cabin filter housing cover. Use a drive socket #6. Use a ratchet wrench.



**8**

Return the passenger seat to its initial position.



- 9** Switch on the ignition.
- 10** Switch on the air conditioning system. This is necessary in order to make sure that the component operates properly.
- 11** Switch off the ignition.

**WELL DONE!** 

[VIEW MORE TUTORIALS](#)

# AUTODOC – TOP QUALITY AND AFFORDABLE CAR PARTS ONLINE

**AUTODOC MOBILE APP: GREAT DEALS AND CONVENIENT SHOPPING**



**+ AUTODOC**

GET IT ON  
 **Google Play**

 **Download on the App Store**

**Download**

**A GREAT SELECTION OF SPARE PARTS FOR YOUR CAR**

**POLLEN FILTER: A WIDE SELECTION**

## **DISCLAIMER:**

The document contains only general recommendations that may be useful for you when you perform repair or replacement work. AUTODOC shall not be liable for any loss, injury, damage of property occurring in the repair or replacement process due to incorrect use or misinterpretation of the provided information.

AUTODOC shall not be liable for any possible mistakes and uncertainties in this guide. The information provided is for information purposes only and cannot replace advice from specialists.

AUTODOC shall not be liable for incorrect or hazardous usage of equipment, tools and car parts. AUTODOC strongly recommends to be careful and observe the safety rules when performing repair or replacement works. Remember: usage of low quality auto parts does not guarantee you the appropriate level of road safety.

© Copyright 2022 – All the contents of this website, in particular texts, photographs and graphics, are protected by copyright. All rights, including reproduction, publication, editing and translation rights, are reserved by AUTODOC GmbH.