



How to change
serpentine belt on
Mercedes W210 –
replacement guide

VIDEO TUTORIAL



Important!

This replacement procedure can be used for:

MERCEDES-BENZ E-Class T-modell (S210) E 270 T CDI, MERCEDES-BENZ C-Class Saloon (W202) C 220 CDI (202.133), MERCEDES-BENZ C-Class T-modell (S202) C 220 T CDI (202.193), MERCEDES-BENZ E-Class Saloon (W210) E 220 CDI (210.006), MERCEDES-BENZ E-Class T-modell (S210) E 220 T CDI (210.206), MERCEDES-BENZ E-Class Saloon (W210) E 200 CDI (210.007), MERCEDES-BENZ C-Class Saloon (W202) C 200 CDI (202.134), MERCEDES-BENZ C-Class T-modell (S202) C 200 T CDI (202.194), MERCEDES-BENZ E-Class Saloon (W210) E 270 CDI (210.016), MERCEDES-BENZ E-Class Saloon (W210) E 320 CDI (210.026), MERCEDES-BENZ E-Class T-modell (S210) E 320 T CDI (210.226), MERCEDES-BENZ E-Class T-modell (S210) E 270 T CDI (210.216), MERCEDES-BENZ M-Class (W163) ML 270 CDI (163.113), MERCEDES-BENZ SPRINTER 2-t Bus (901, 902) 208 CDI 2.2, MERCEDES-BENZ SPRINTER 2-t Bus (901, 902) 211 CDI 2.2, (+ 62)

The steps may slightly vary depending on the car design.

REPLACEMENT: SERPENTINE BELT – MERCEDES
W210. TOOLS YOU'LL NEED:



- 12-point socket # 17
- Drive socket # 27
- Ratchet wrench

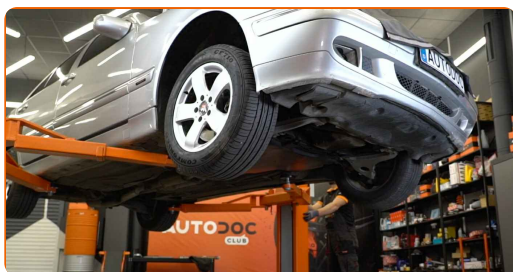
BUY TOOLS

Replacement: serpentine belt – Mercedes W210. Tip from AUTODOC experts:

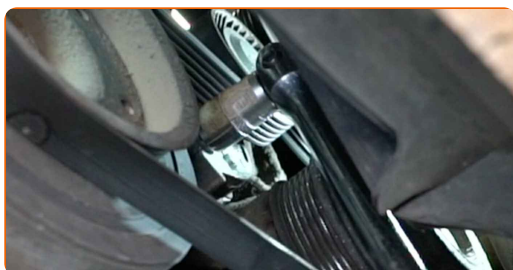
- All work should be done with the engine stopped.

REPLACEMENT: SERPENTINE BELT – MERCEDES W210. RECOMMENDED SEQUENCE OF STEPS:

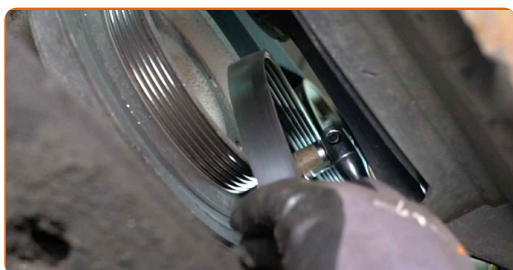
- 1 Lift the car using a jack or place it over an inspection pit.



- 2 Pull aside the V-ribbed belt tensioner pulley. Use 12-point socket No.17. Use a ratchet wrench.



- 3 Remove the V-ribbed belt from the pulley.



4 Return the tensioner pulley to its initial position.



5 Remove the V-ribbed belt.



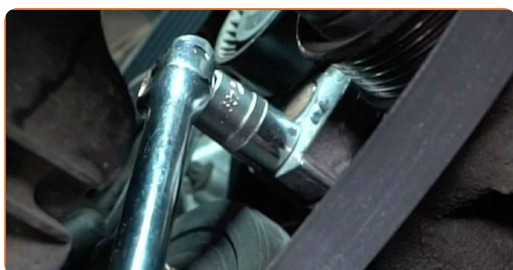
Replacement: serpentine belt – Mercedes W210. AUTODOC recommends:

- Check the condition of the tensioner pulley and idler pulley. Replace them if necessary.

6 Install the V-ribbed belt.



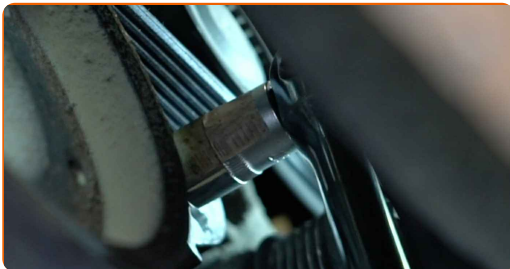
7 Pull aside the V-ribbed belt tensioner pulley. Use 12-point socket No.17. Use a ratchet wrench.



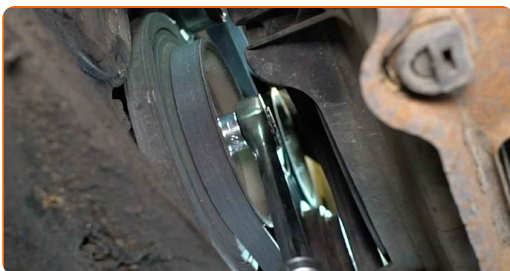
8 Place the V-ribbed belt on the tensioner pulley.



9 Return the tensioner pulley to its initial position.



10 Rotate the crankshaft several times to check whether the new V-ribbed belt is working correctly. Use a drive socket #27. Use a ratchet wrench.



AUTODOC recommends:

- Make sure that the V-ribbed belt fits all pulleys snugly.
- Make sure that the V-ribbed belt is properly tensioned.

11

Lower the car.



12

Run the engine for a few minutes.



Replacement: serpentine belt – Mercedes W210. Tip:

- This is necessary in order to make sure that the component operates properly.

13

Shut off the engine.

WELL DONE! 

VIEW MORE TUTORIALS

AUTODOC – TOP QUALITY AND AFFORDABLE CAR PARTS ONLINE

AUTODOC MOBILE APP: GREAT DEALS AND CONVENIENT SHOPPING



+ AUTODOC

GET IT ON  **Google Play**

 **Download on the App Store**

Download

A GREAT SELECTION OF SPARE PARTS FOR YOUR CAR

BUY SPARE PARTS FOR MERCEDES

SERPENTINE BELT: A WIDE SELECTION

CHOOSE CAR PARTS FOR MERCEDES W210

SERPENTINE BELT FOR MERCEDES: BUY NOW

**SERPENTINE BELT FOR MERCEDES W210: THE BEST DEALS
& OFFERS**

DISCLAIMER:

The document contains only general recommendations that may be useful for you when you perform repair or replacement work. AUTODOC shall not be liable for any loss, injury, damage of property occurring in the repair or replacement process due to incorrect use or misinterpretation of the provided information.

AUTODOC shall not be liable for any possible mistakes and uncertainties in this guide. The information provided is for information purposes only and cannot replace advice from specialists.

AUTODOC shall not be liable for incorrect or hazardous usage of equipment, tools and car parts. AUTODOC strongly recommends to be careful and observe the safety rules when performing repair or replacement works. Remember: usage of low quality auto parts does not guarantee you the appropriate level of road safety.

© Copyright 2022 – All the contents of this website, in particular texts, photographs and graphics, are protected by copyright. All rights, including reproduction, publication, editing and translation rights, are reserved by AUTODOC GmbH.