



How to change rear
brake discs on **Mercedes**
W210 – replacement
guide

VIDEO TUTORIAL



Important!

This replacement procedure can be used for:

MERCEDES-BENZ E-Class Saloon (W210) E 320 (210.055), MERCEDES-BENZ E-Class Saloon (W210) E 280 (210.053), MERCEDES-BENZ E-Class Saloon (W210) E 420 (210.072), MERCEDES-BENZ C-Class T-modell (S203) C 220 CDI (203.208), MERCEDES-BENZ E-Class Saloon (W210) E 270 CDI (210.016), MERCEDES-BENZ E-Class Saloon (W210) E 280 (210.063), MERCEDES-BENZ E-Class Saloon (W210) E 280 4-matic (210.081), MERCEDES-BENZ E-Class Saloon (W210) E 320 (210.065), MERCEDES-BENZ E-Class Saloon (W210) E 300 Turbo-D (210.025), MERCEDES-BENZ E-Class Saloon (W210) E 320 4-matic (210.082), MERCEDES-BENZ CLK (C208) 320 3.2 (208.365), MERCEDES-BENZ E-Class Saloon (W210) E 240 (210.061), MERCEDES-BENZ CLK Convertible (A208) 200 2.0 Kompressor (208.445), MERCEDES-BENZ CLK Convertible (A208) 230 2.3 Kompressor (208.447), MERCEDES-BENZ CLK Convertible (A208) 320 3.2 (208.465), (+ 74)

The steps may slightly vary depending on the car design.

**REPLACEMENT: BRAKE DISCS – MERCEDES W210.
TOOLS YOU MIGHT NEED:**



- Wire brush
- Nylon cleaning brush
- WD-40 spray
- Brake cleaner
- Anti-squeal paste
- Ceramic grease
- Torque wrench
- Drive socket # 16
- HEX bit No.H5
- Wheel impact socket #17
- Ratchet wrench
- Crow bar
- Tap wrench
- Brake caliper wind back tool
- Pin punch
- Hammer
- Wheel chock

BUY TOOLS

Replacement: brake discs – Mercedes W210. AUTODOC experts recommend:

- Replace the brake disks on the car Mercedes W210 in complete set for each axis. Regardless of the state of components. This will ensure even braking.
- The replacement procedure is identical for both brake disks on the same axle.
- When changing the brake discs, always replace the brake pads.
- All work should be done with the engine stopped.

REPLACEMENT: BRAKE DISCS – MERCEDES W210. TAKE THE FOLLOWING STEPS:

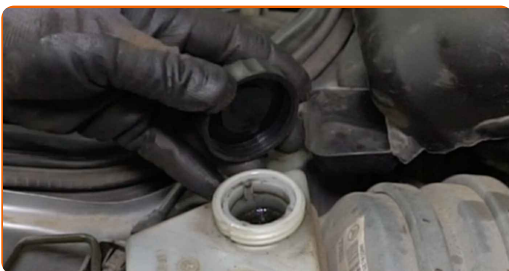
1

Open the bonnet.



2

Unscrew the brake fluid reservoir cap.



3

Secure the wheels with chocks.

4

Loosen the wheel bolts. Use wheel impact socket #17. Use a tap wrench.



5

Raise the car.

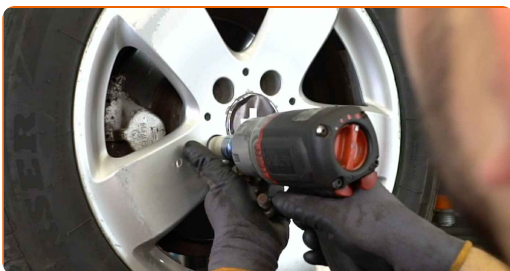


Replacement: brake discs – Mercedes W210. Professionals recommend:

- If you are using a jack, make sure it rests on a flat surface without any unevenness.
- Be sure to additionally secure the car with jack stands.

6

Unscrew the wheel bolts.



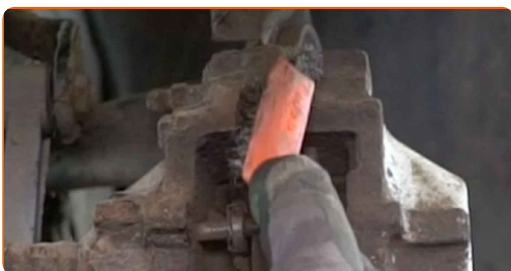
AUTODOC recommends:

- Important! Hold the wheel while unscrewing the fastening bolts. Mercedes W210

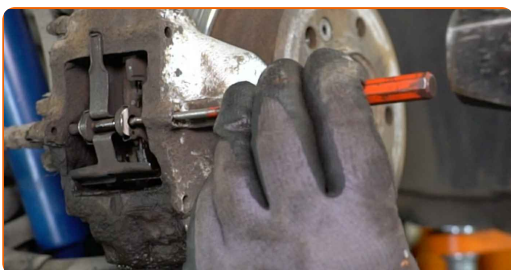
7 Remove the wheel.



8 Clean the brake pads fasteners. Use a brake cleaner. Use a wire brush.



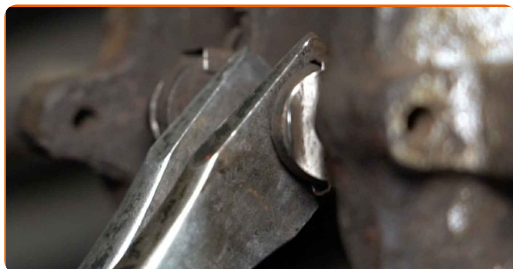
9 Remove the brake pad pin. Use a pin punch. Use a hammer.



10 Remove the retaining spring of the brake pads.



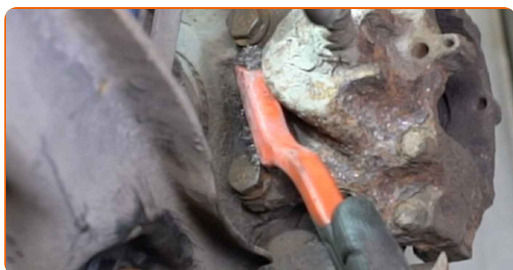
11 Spread the brake pads. Use a crowbar.



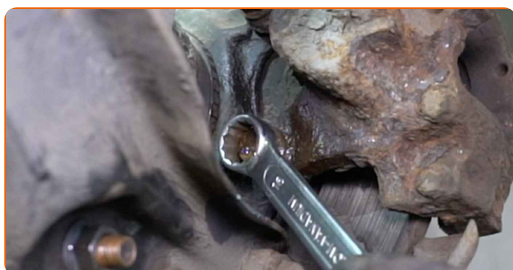
12 Remove the brake pads.



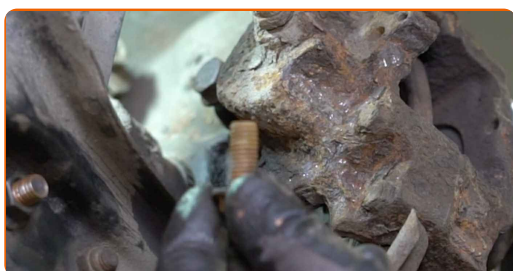
13 Clean the brake caliper fasteners. Use a wire brush. Use WD-40 spray.



14 Unscrew the brake caliper fasteners. Use a drive socket #16. Use a ratchet wrench.



15 Remove the fastening bolts.



16

Remove the brake caliper.



Replacement: brake discs – Mercedes W210. AUTODOC recommends:

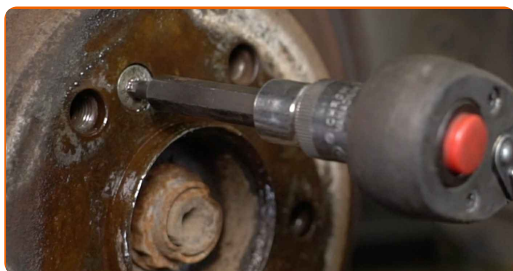
- Tie the caliper to the suspension or to the body with a wire without disconnecting from the brake hose to prevent depressurization of the brake system.
- Make sure that the brake caliper is not hanging on the brake hose.
- Don't press the brake pedal after the brake caliper has been removed. As a result, the piston can fall out from the brake cylinder, and brake fluid leakage and depressurization of the system may occur.

17

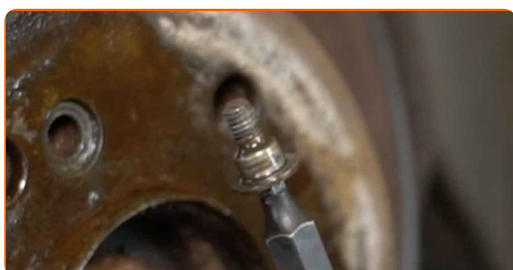
Clean the brake disc fastener. Use a wire brush. Use WD-40 spray.



18 Unscrew the brake disc fasteners. Use HEX No.H5. Use a ratchet wrench.



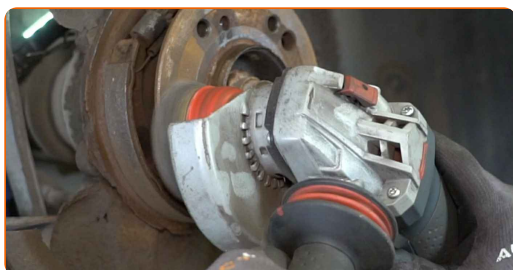
19 Remove the fastening bolt.



20 Remove the brake disc.



21 Clean the wheel hub. Use a wire brush.



22 Treat the contacting surface. Use ceramic grease.

23 Clean the handbrake shoes mechanism. Use a brake cleaner.



24 Install a new brake disc.



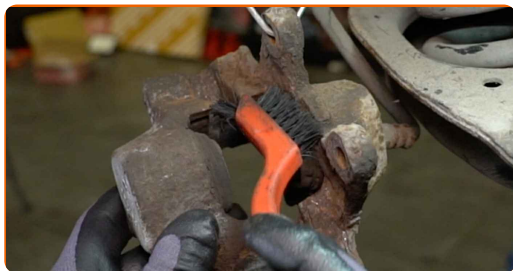
25 Install the fastening bolt.



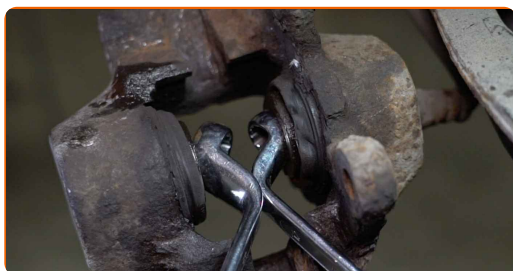
26 Tighten the brake disc fasteners. Use HEX No.H5. Use a torque wrench. Tighten it to 10 Nm torque.



27 Treat the brake caliper pistons. Use a nylon cleaning brush. Use a brake cleaner.



28 Wind back the brake caliper pistons. Use brake caliper wind back tool.



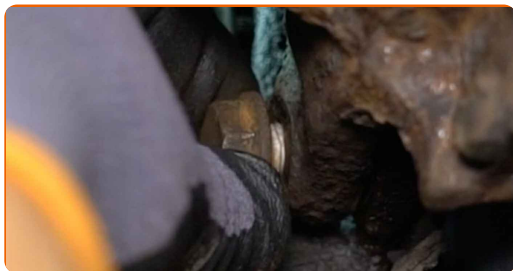
29 Clean the mounting seat of the brake caliper. Use a brake cleaner. Use a wire brush.



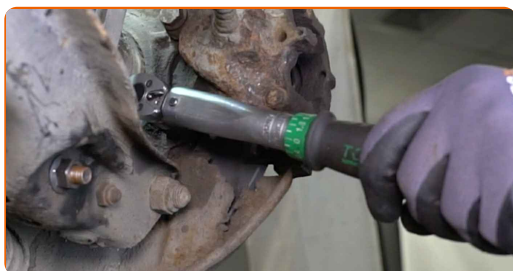
30 Install the brake caliper.



31 Install the fastening bolts.



32 Tighten the brake caliper fasteners. Use a drive socket #16. Use a torque wrench. Tighten it to 55 Nm torque.



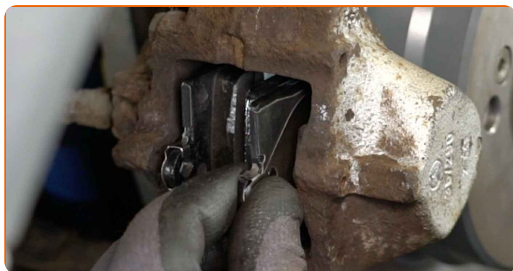
33 Treat the surface of the brake pads that contacts the brake caliper. Use anti-squeal paste.



AUTODOC recommends:

- Make sure the disc surface is clean before installing the pads.

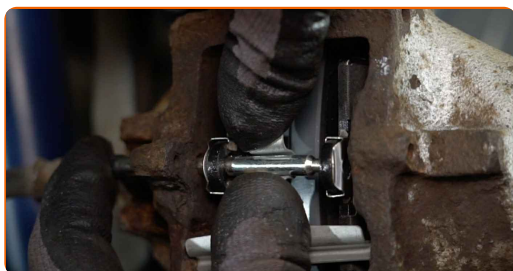
34 Install the brake pads.



35 Install the retaining spring of the brake pads.



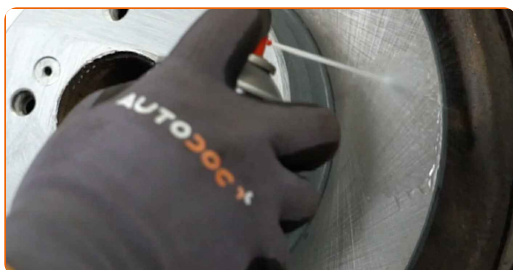
36 Install the brake pad pin. Use a pin punch. Use a hammer.



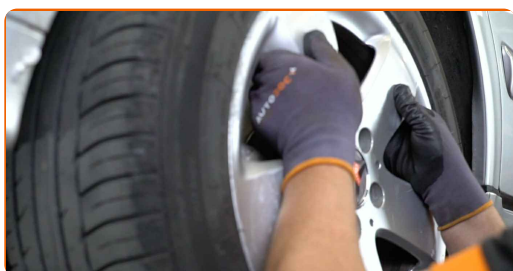
37 Treat the surface where the brake disc contacts the wheel rim. Use ceramic grease.



38 Clean the brake disk surface. Use a brake cleaner.



39 Install the wheel.



Replacement: brake discs – Mercedes W210. Tip:

- To avoid injury, hold up the wheel when screwing in the fastening bolts.

40

Screw in the wheel bolts. Use wheel impact socket #17. Use a ratchet wrench.



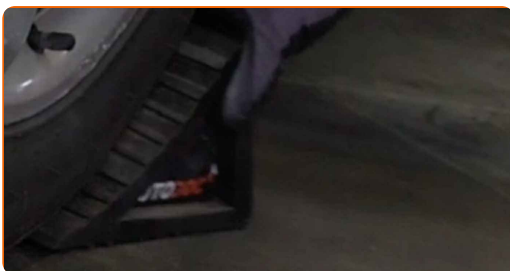
41

Lower the car and working in a cross order, tighten the wheel bolts. Use wheel impact socket #17. Use a torque wrench. Tighten it to 110 Nm torque.



42

Remove the jacks and chocks.



AUTODOC recommends:

- Mercedes W210 – Without starting the engine, press the brake pedal several times until it feels firm.
- Check the brake fluid level in the expansion tank and top up if necessary.

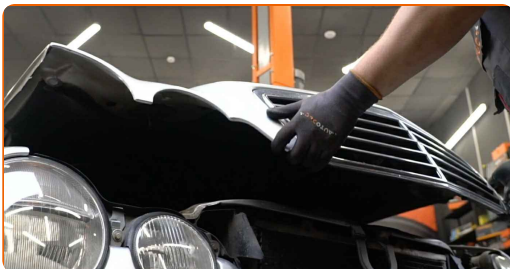
43

Tighten the brake fluid reservoir cap.



44

Close the bonnet.



WELL DONE! 

VIEW MORE TUTORIALS

AUTODOC – TOP QUALITY AND AFFORDABLE CAR PARTS ONLINE

AUTODOC MOBILE APP: GREAT DEALS AND CONVENIENT SHOPPING



+ AUTODOC

GET IT ON  **Google Play**

 **Download on the App Store**

Download

A GREAT SELECTION OF SPARE PARTS FOR YOUR CAR

BUY SPARE PARTS FOR MERCEDES

BRAKE DISCS: A WIDE SELECTION

CHOOSE CAR PARTS FOR MERCEDES W210

BRAKE DISCS FOR MERCEDES: BUY NOW

BRAKE DISCS FOR MERCEDES W210: THE BEST DEALS & OFFERS

DISCLAIMER:

The document contains only general recommendations that may be useful for you when you perform repair or replacement work. AUTODOC shall not be liable for any loss, injury, damage of property occurring in the repair or replacement process due to incorrect use or misinterpretation of the provided information.

AUTODOC shall not be liable for any possible mistakes and uncertainties in this guide. The information provided is for information purposes only and cannot replace advice from specialists.

AUTODOC shall not be liable for incorrect or hazardous usage of equipment, tools and car parts. AUTODOC strongly recommends to be careful and observe the safety rules when performing repair or replacement works. Remember: usage of low quality auto parts does not guarantee you the appropriate level of road safety.

© Copyright 2023 – All the contents of this website, in particular texts, photographs and graphics, are protected by copyright. All rights, including reproduction, publication, editing and translation rights, are reserved by AUTODOC SE.