



How to change
intercooler hose on
Mercedes W210 –
replacement guide

VIDEO TUTORIAL



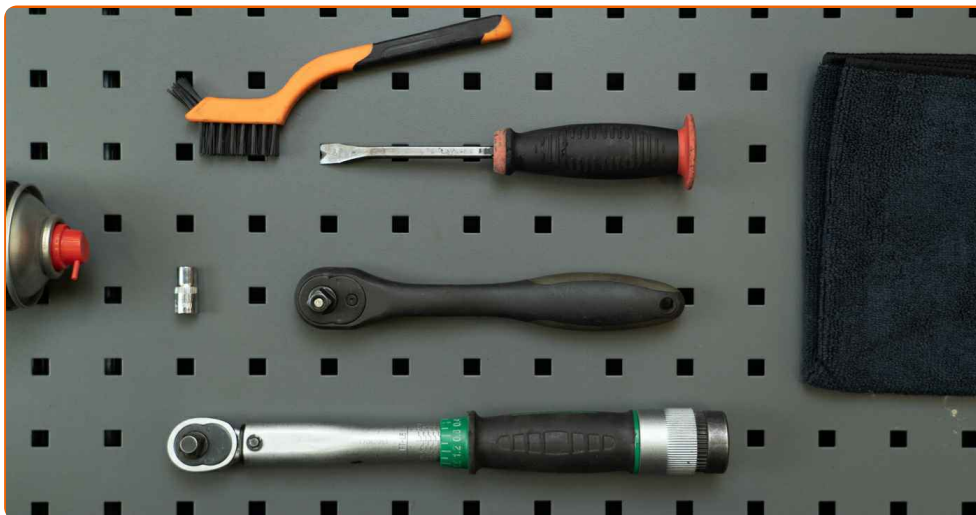
Important!

This replacement procedure can be used for:

MERCEDES-BENZ E-Class T-modell (S210) E 270 T CDI, MERCEDES-BENZ E-Class Saloon (W210) E 270 CDI (210.016), MERCEDES-BENZ E-Class Saloon (W210) E 220 CDI (210.006), MERCEDES-BENZ E-Class T-modell (S210) E 220 T CDI (210.206), MERCEDES-BENZ E-Class Saloon (W210) E 200 CDI (210.007), MERCEDES-BENZ E-Class T-modell (S210) E 270 T CDI (210.216), MERCEDES-BENZ E-Class Platform / Chassis (VF210) E 220 CDi (210.606), MERCEDES-BENZ E-Class Platform / Chassis (VF210) E 270 CDI (210.616)

The steps may slightly vary depending on the car design.

REPLACEMENT: INTERCOOLER HOSE – MERCEDES W210. TOOLS YOU NEED:



- Nylon cleaning brush
- All-purpose cleaning spray
- Torque wrench
- Drive socket # 7
- Ratchet wrench
- Crow bar
- Microfibre towel

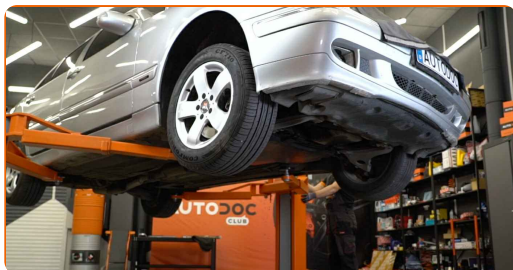
BUY TOOLS

Replacement: intercooler hose – Mercedes W210. AUTODOC recommends:

- All work should be done with the engine stopped.

REPLACEMENT: INTERCOOLER HOSE – MERCEDES W210. TAKE THE FOLLOWING STEPS:

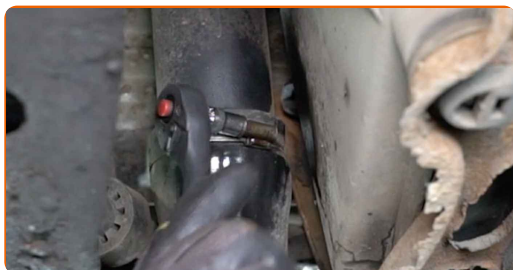
- 1 Lift the car using a jack or place it over an inspection pit.



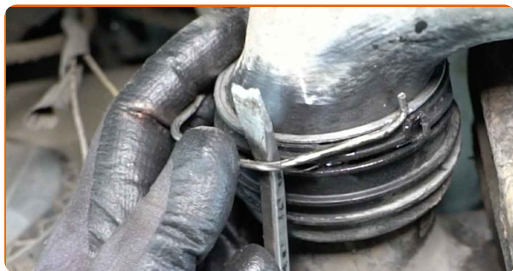
- 2 Clean the intercooler hose fasteners. Use a nylon cleaning brush. Use all-purpose cleaning spray.



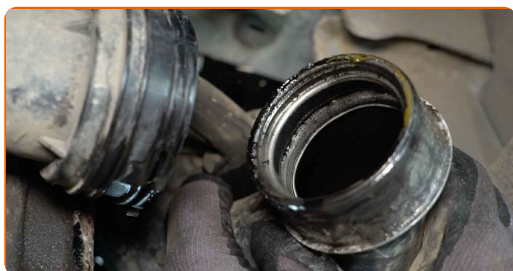
- 3 Unscrew the intercooler pipe clamp. Use a drive socket #7. Use a ratchet wrench.



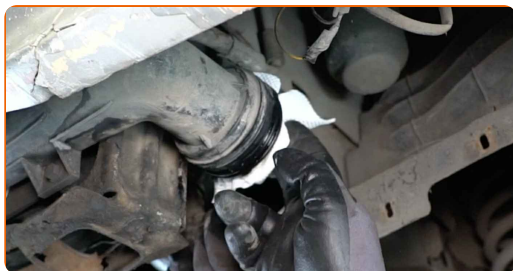
4 Remove the lower clip of the intercooler hose. Use a crowbar.



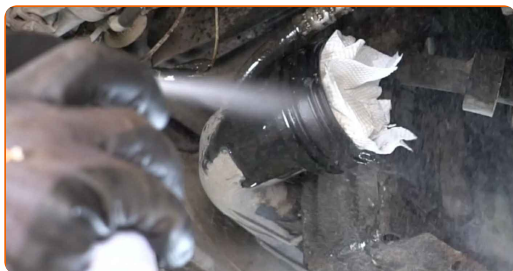
5 Remove the intercooler hose.



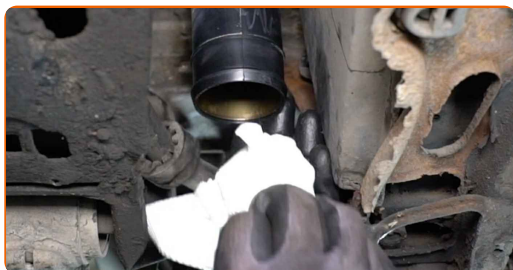
6 Cover the air hoses with microfibre cloths to prevent dirt from entering the system.



7 Clean the mounting seats of the intercooler hose. Use all-purpose cleaning spray.



8 Remove the microfibre cloths from the air hoses.



9 Install the new intercooler hose.



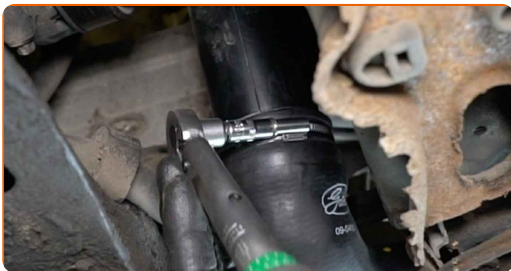
10 Fit the lower clip of the intercooler hose.



Replacement: intercooler hose – Mercedes W210. Professionals recommend:

- Make sure that the clip is fitted correctly and holds the hose securely in its mounting seat.

11 Tighten the intercooler hose clamp. Use a drive socket #7. Use a torque wrench. Tighten it to 3.5 Nm torque.



AUTODOC recommends:

- Do not overtighten the clamp as excessive tightening torque may damage the hose.

12

Lower the car.



WELL DONE! 

VIEW MORE TUTORIALS

AUTODOC – TOP QUALITY AND AFFORDABLE CAR PARTS ONLINE

AUTODOC MOBILE APP: GREAT DEALS AND CONVENIENT SHOPPING



+ AUTODOC

GET IT ON
Google Play

Download on the
App Store

Download

A GREAT SELECTION OF SPARE PARTS FOR YOUR CAR

BUY SPARE PARTS FOR MERCEDES

INTERCOOLER HOSE: A WIDE SELECTION

CHOOSE CAR PARTS FOR MERCEDES W210

INTERCOOLER HOSE FOR MERCEDES: BUY NOW

INTERCOOLER HOSE FOR MERCEDES W210: THE BEST DEALS & OFFERS

DISCLAIMER:

The document contains only general recommendations that may be useful for you when you perform repair or replacement work. AUTODOC shall not be liable for any loss, injury, damage of property occurring in the repair or replacement process due to incorrect use or misinterpretation of the provided information.

AUTODOC shall not be liable for any possible mistakes and uncertainties in this guide. The information provided is for information purposes only and cannot replace advice from specialists.

AUTODOC shall not be liable for incorrect or hazardous usage of equipment, tools and car parts. AUTODOC strongly recommends to be careful and observe the safety rules when performing repair or replacement works. Remember: usage of low quality auto parts does not guarantee you the appropriate level of road safety.

© Copyright 2023 – All the contents of this website, in particular texts, photographs and graphics, are protected by copyright. All rights, including reproduction, publication, editing and translation rights, are reserved by AUTODOC SE.