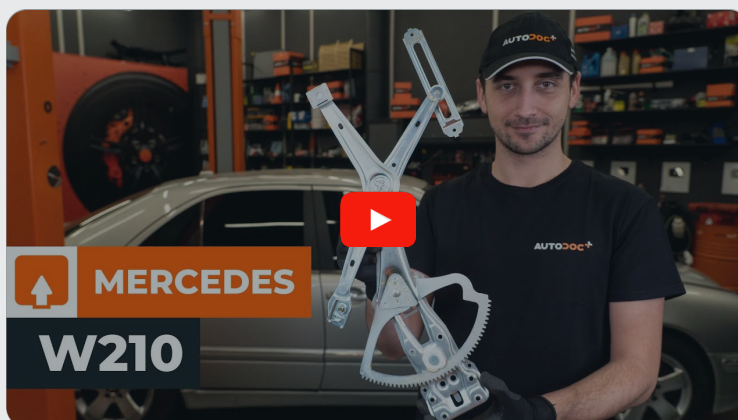




How to change front  
window regulator on  
**Mercedes W210** –  
replacement guide

## VIDEO TUTORIAL



### **i Important!**

This replacement procedure can be used for:

MERCEDES-BENZ E-Class Saloon (W210) E 220 D (210.004), MERCEDES-BENZ E-Class Saloon (W210) E 250 D (210.010), MERCEDES-BENZ E-Class Saloon (W210) E 200 (210.035), MERCEDES-BENZ E-Class Saloon (W210) E 300 D (210.020), MERCEDES-BENZ E-Class Saloon (W210) E 230 (210.037), MERCEDES-BENZ E-Class Saloon (W210) E 320 (210.055), MERCEDES-BENZ E-Class Saloon (W210) E 290 Turbo-D (210.017), MERCEDES-BENZ E-Class Saloon (W210) E 280 (210.053), MERCEDES-BENZ E-Class Saloon (W210) E 420 (210.072), MERCEDES-BENZ E-Class Saloon (W210) E 50 AMG (210.072), MERCEDES-BENZ E-Class T-modell (S210) E 200 T (210.235), MERCEDES-BENZ E-Class T-modell (S210) E 230 T (210.237), MERCEDES-BENZ E-Class T-modell (S210) E 420 T (210.272), MERCEDES-BENZ E-Class T-modell (S210) E 290 T Turbo-D (210.217), MERCEDES-BENZ E-Class T-modell (S210) E 250 T D (210.210), (+ 42)

The steps may slightly vary depending on the car design.

REPLACEMENT: WINDOW REGULATOR – MERCEDES  
W210. TOOLS YOU NEED:



- WD-40 spray
- Multi-purpose lithium grease
- Torque wrench
- Drive socket # 10
- Torx bit T30
- Ratchet wrench
- Phillips screwdriver
- Plastic trim tool
- Drill
- 7 mm drill bit
- Riveter
- 4.8 mm rivets
- Painter's tape

**BUY TOOLS**

Replacement: window regulator – Mercedes W210. Professionals recommend:

- All work should be done with the engine stopped.

## REPLACEMENT: WINDOW REGULATOR – MERCEDES W210. RECOMMENDED SEQUENCE OF STEPS:

- 1 Open the car door.



- 2 Switch on the ignition.

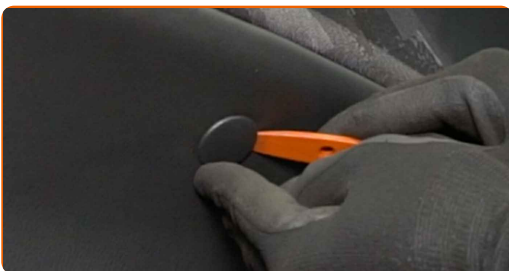
- 3 Lower the window glass.

AUTODOC recommends:

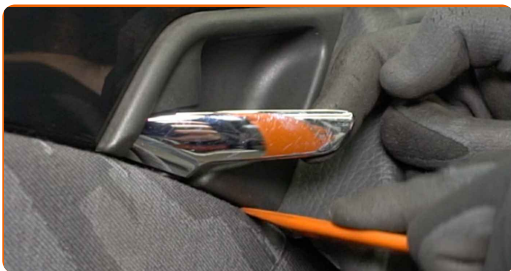
- Continue lowering the window glass until its fasteners become visible.

- 4 Switch off the ignition.

- 5 Remove the door card fastener cover. Use a plastic trim tool.



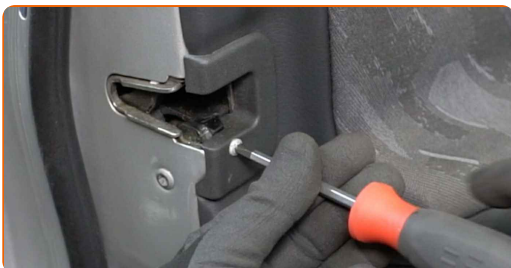
**6** Detach the door handle trim panel. Use a plastic trim tool.



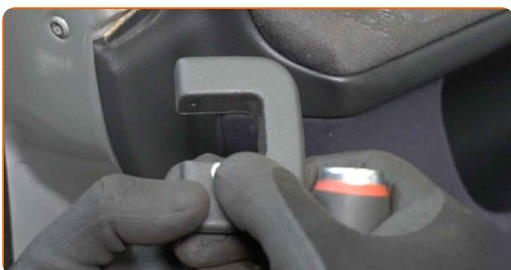
**7** Detach the SRS cover. Use a plastic trim tool.



**8** Unscrew the door lock cover fastener. Use a Phillips screwdriver.



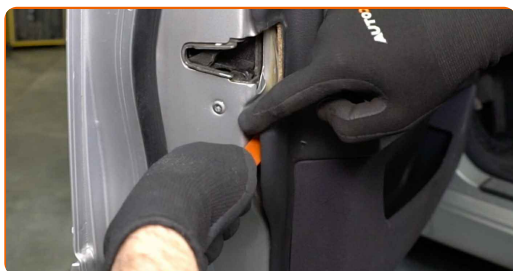
**9** Remove the door lock cover.



**10** Unscrew the door card fasteners. Use a Phillips screwdriver.



**11** Detach the door card. Use a plastic trim tool.



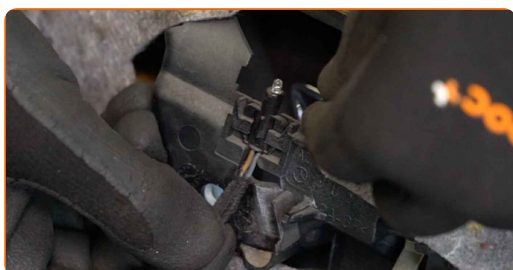
Replacement: window regulator – Mercedes W210. AUTODOC recommends:

- Do not apply excessive force when removing the part. Otherwise you may damage it.

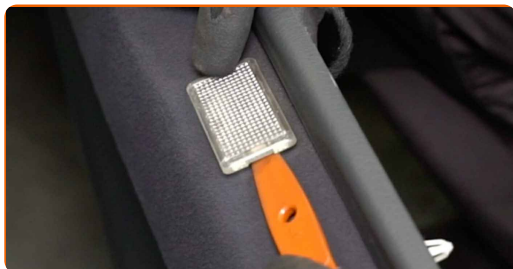
**12** Detach the door lock actuator cable.



**13** Detach the door handle illumination module.



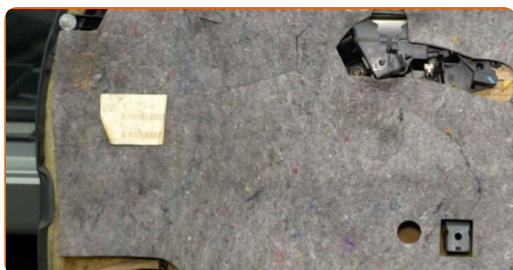
**14** Remove the light. Use a plastic trim tool.



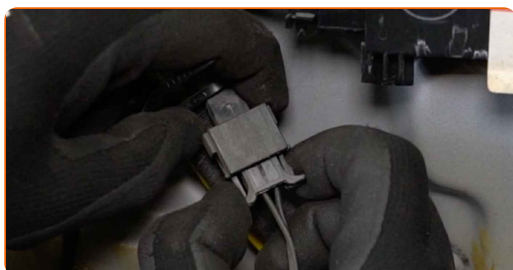
**15** Detach the bulb connector.



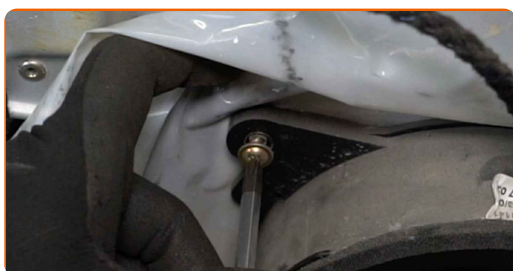
**16** Detach the door panel sound insulation.



**17** Detach the speaker connector.

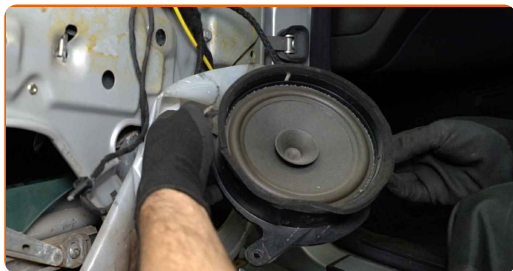


**18** Unscrew the speaker's fasteners. Use a Phillips screwdriver.

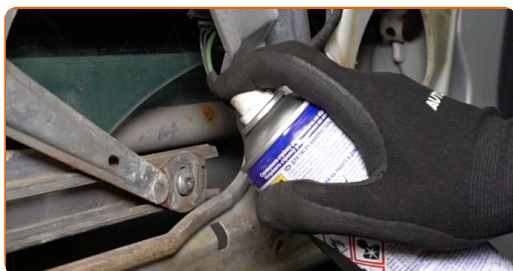




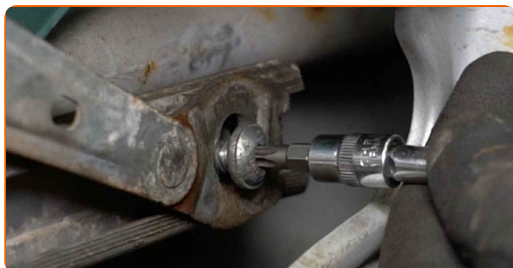
**19** Remove the speaker.



**20** Treat the glass fastener. Use WD-40 spray.



**21** Unscrew the glass fastener. Use a Phillips screwdriver.



**22** Switch on the ignition.

**23** Raise the glass a little and release it from the window regulator.



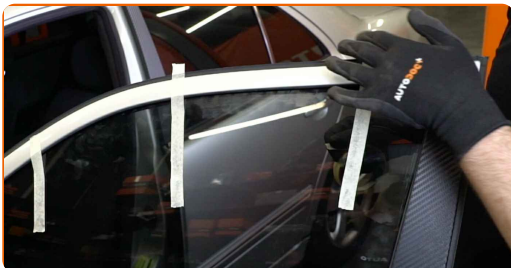
**AUTODOC recommends:**

- When removing the glass, hold it firmly to avoid injury.



**24** Switch off the ignition.

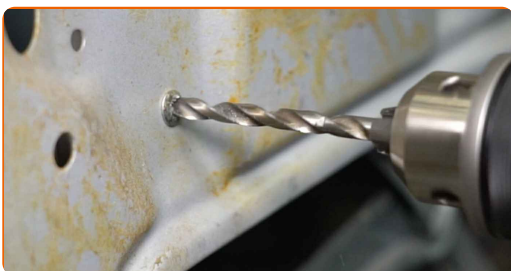
**25** Raise the window glass all the way up and secure it on the door frame with masking tape.



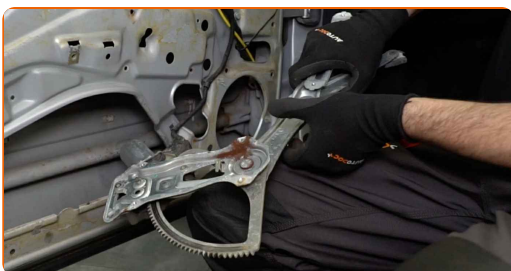
**Replacement: window regulator – Mercedes W210. Tip:**

- To avoid injury, hold the glass when raising it.

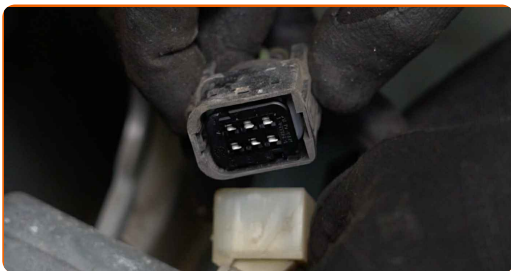
**26** Drill out the rivets of the window regulator linkage. Use a drill. Use a 7 mm drill bit.



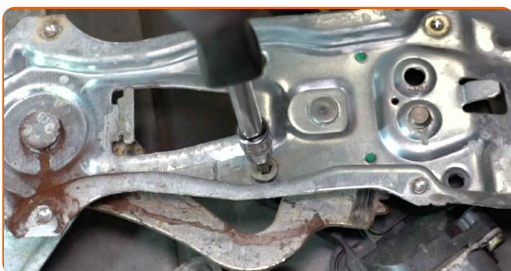
**27** Remove the window regulator mechanism.



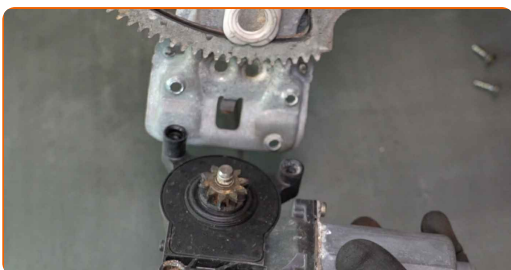
**28** Detach the connector from the power window motor.



**29** Unscrew the power window motor fasteners. Use Torx T30. Use a ratchet wrench.



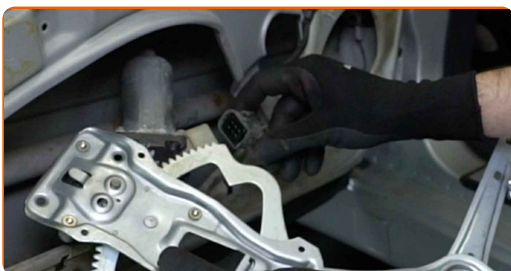
**30** Remove the power window motor.



**31** Install and screw in the motor fasteners on the new window regulator mechanism. Use Torx T30. Use a ratchet wrench.



**32** Attach the connector to the power window motor.



**33** Install the new window regulator mechanism.

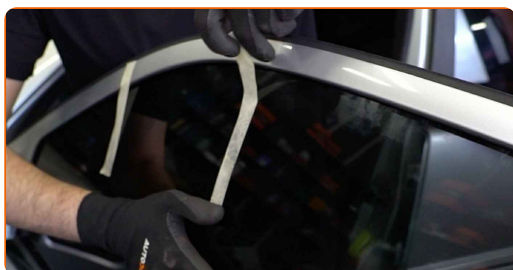


**34** Treat the window regulator mechanism. Use a multi-purpose lithium grease.

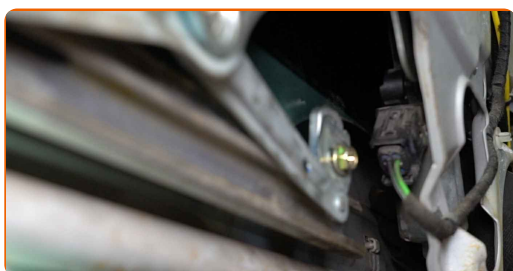
**35** Install the rivets of the window regulator mechanism. Use a riveter. Use 4.8 mm rivets.



**36** Remove the painter's tape.



**37** Lower the window glass and install it to its mounting seat in the window raiser mechanism.

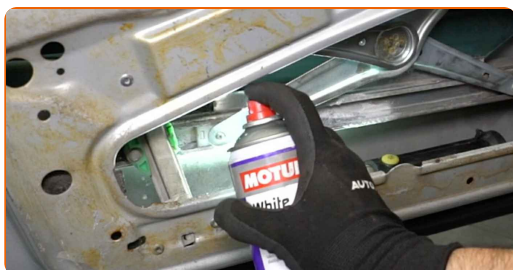


Replacement: window regulator – Mercedes W210. AUTODOC experts recommend:

- To avoid injury, hold the glass when lowering it.

38

Treat the window regulator mechanism. Use a multi-purpose lithium grease.



39

Screw in the glass fastener. Use a Phillips screwdriver.



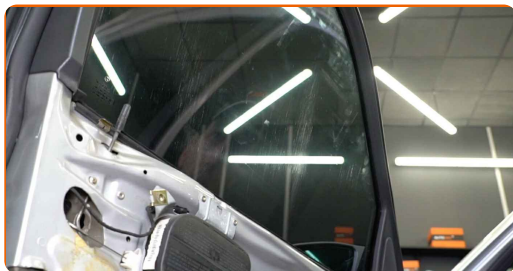
AUTODOC recommends:

- To avoid injury, hold the glass when screwing in the fasteners.

40

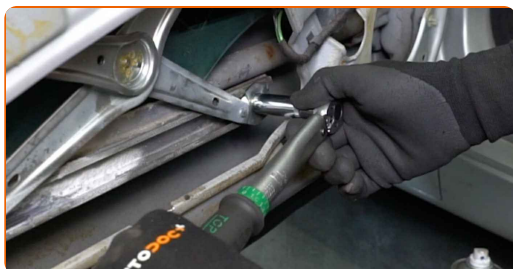
Switch on the ignition.

**41** Check that the window regulator works correctly.



**42** Switch off the ignition.

**43** Tighten the glass fastener. Use a drive socket #10. Use a torque wrench. Tighten it to 8 Nm torque.



**44** Attach the door panel sound insulation.

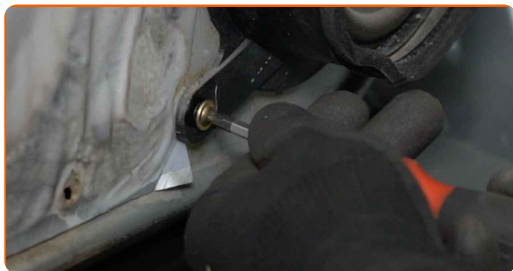


**45** Install the speaker.

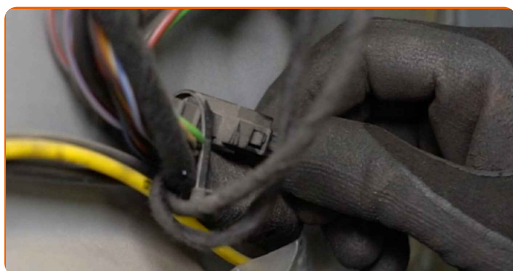




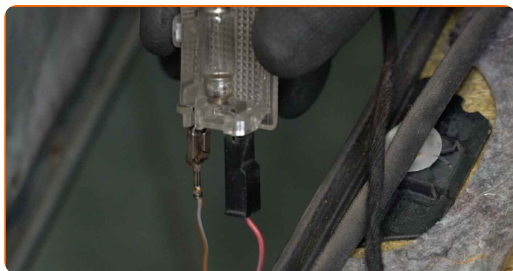
**46** Screw in the speaker's fasteners. Use a Phillips screwdriver.



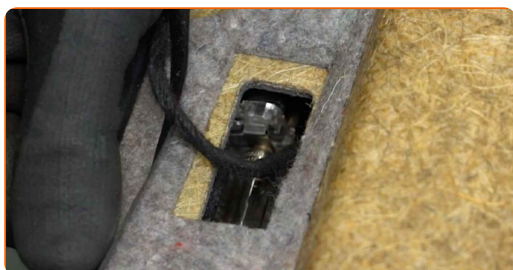
**47** Attach the speaker connector.



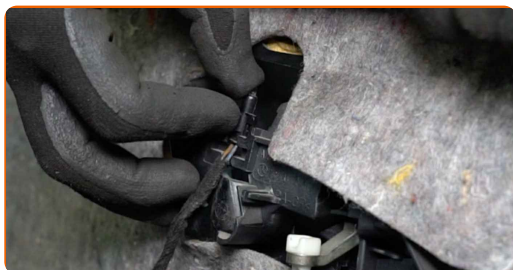
**48** Attach the bulb connector.



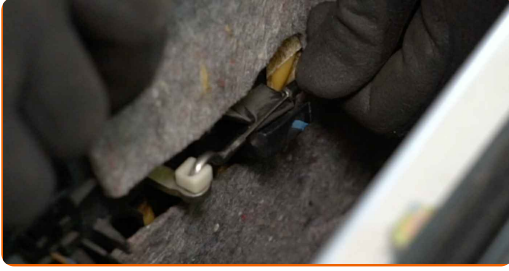
**49** Reinstall the light.



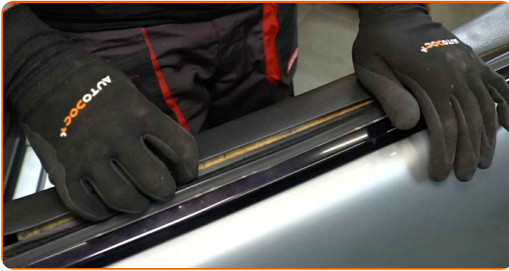
**50** Reattach the door handle illumination module.



**51** Attach the door lock actuator cable.



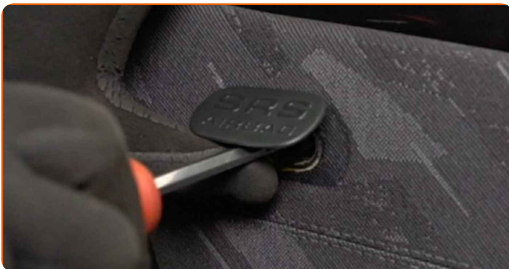
**52** Reinstall the door card.



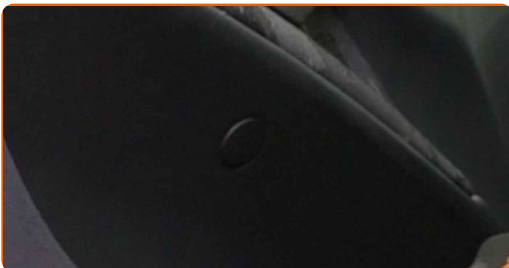
**53** Screw in the door card fasteners. Use a Phillips screwdriver.



**54** Reinstall the SRS cover.

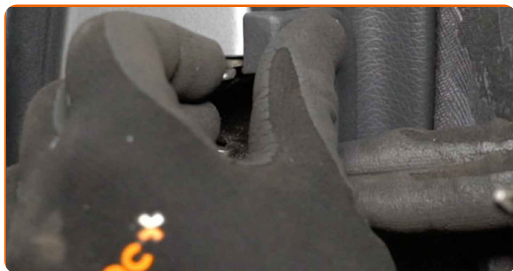


**55** Reinstall the door card fastener cover.





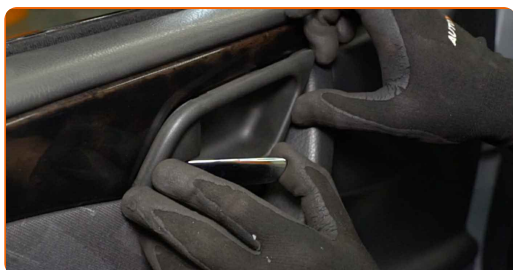
**56** Reinstall the door lock cover.



**57** Screw in the door lock cover fastener. Use a Phillips screwdriver.



**58** Attach the door handle trim panel.



**59** Close the car door.



**WELL DONE!** 

**VIEW MORE TUTORIALS**

# AUTODOC – TOP QUALITY AND AFFORDABLE CAR PARTS ONLINE

**AUTODOC MOBILE APP: GREAT DEALS AND CONVENIENT SHOPPING**



**+ AUTODOC**

GET IT ON  
**Google Play**

Download on the  
**App Store**

**Download**

**A GREAT SELECTION OF SPARE PARTS FOR YOUR CAR**

**BUY SPARE PARTS FOR MERCEDES**

**WINDOW REGULATOR: A WIDE SELECTION**

**CHOOSE CAR PARTS FOR MERCEDES W210**

**WINDOW REGULATOR FOR MERCEDES: BUY NOW**

**WINDOW REGULATOR FOR MERCEDES W210: THE BEST  
DEALS & OFFERS**

### **DISCLAIMER:**

The document contains only general recommendations that may be useful for you when you perform repair or replacement work. AUTODOC shall not be liable for any loss, injury, damage of property occurring in the repair or replacement process due to incorrect use or misinterpretation of the provided information.

AUTODOC shall not be liable for any possible mistakes and uncertainties in this guide. The information provided is for information purposes only and cannot replace advice from specialists.

AUTODOC shall not be liable for incorrect or hazardous usage of equipment, tools and car parts. AUTODOC strongly recommends to be careful and observe the safety rules when performing repair or replacement works. Remember: usage of low quality auto parts does not guarantee you the appropriate level of road safety.

© Copyright 2022 – All the contents of this website, in particular texts, photographs and graphics, are protected by copyright. All rights, including reproduction, publication, editing and translation rights, are reserved by AUTODOC GmbH.