



How to change front
brake pads on **Mercedes**
W210 – replacement
guide

VIDEO TUTORIAL



Important!

This replacement procedure can be used for:

MERCEDES-BENZ E-Class Saloon (W210) E 320 (210.055), MERCEDES-BENZ E-Class Saloon (W210) E 280 (210.053), MERCEDES-BENZ E-Class Saloon (W210) E 420 (210.072), MERCEDES-BENZ E-Class T-modell (S210) E 270 T CDI, MERCEDES-BENZ E-Class Saloon (W210) E 270 CDI (210.016), MERCEDES-BENZ E-Class Saloon (W210) E 280 (210.063), MERCEDES-BENZ E-Class Saloon (W210) E 280 4-matic (210.081), MERCEDES-BENZ E-Class Saloon (W210) E 320 (210.065), MERCEDES-BENZ E-Class Saloon (W210) E 300 Turbo-D (210.025), MERCEDES-BENZ E-Class T-modell (S210) E 280 T 4-matic (210.281), MERCEDES-BENZ E-Class T-modell (S210) E 320 T (210.265), MERCEDES-BENZ E-Class T-modell (S210) E 300 T Turbo-D (210.225), MERCEDES-BENZ E-Class T-modell (S210) E 320 T 4-matic (210.282), MERCEDES-BENZ E-Class Saloon (W210) E 320 4-matic (210.082), MERCEDES-BENZ CLK (C208) 320 3.2 (208.365), (+ 16)

The steps may slightly vary depending on the car design.

**REPLACEMENT: BRAKE PADS – MERCEDES W210.
TOOLS YOU NEED:**



- Wire brush
- Nylon cleaning brush
- WD-40 spray
- Brake cleaner
- Anti-squeal paste
- Ceramic grease
- Torque wrench
- Drive socket # 18
- HEX bit No.H5
- HEX bit No.H7
- Wheel impact socket #17
- Ratchet wrench
- Crow bar
- Tap wrench
- Brake caliper wind back tool
- Long nose pliers
- Wheel chock

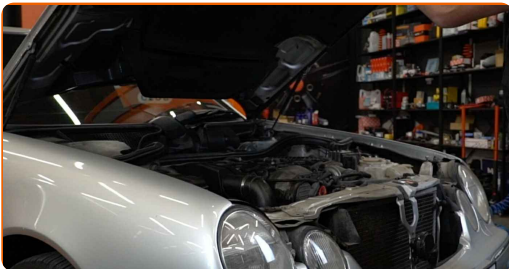
BUY TOOLS

AUTODOC recommends:

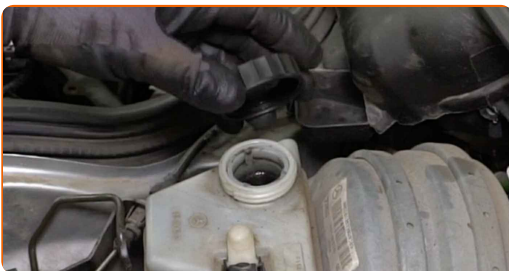
- Perform the replacement of brake pads in complete set for each axis. This provides effective braking.
- The replacement procedure is identical for all brake pads on the same axle.
- Please note: all work on the car – Mercedes W210 – should be done with the engine switched off.

CARRY OUT REPLACEMENT IN THE FOLLOWING ORDER:

1 Open the bonnet.



2 Unscrew the brake fluid reservoir cap.



3 Secure the wheels with chocks.

4

Loosen the wheel bolts. Use wheel impact socket #17. Use a tap wrench.



5

Raise the car.

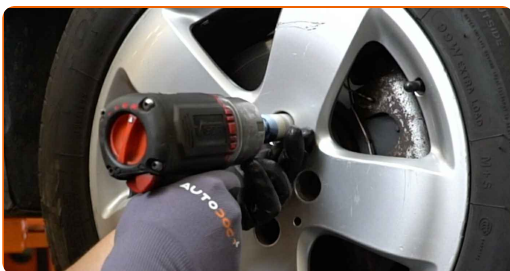


Replacement: brake pads – Mercedes W210. Professionals recommend:

- If you are using a jack, make sure it rests on a flat surface without any unevenness.
- Be sure to additionally secure the car with jack stands.

6

Unscrew the wheel bolts.

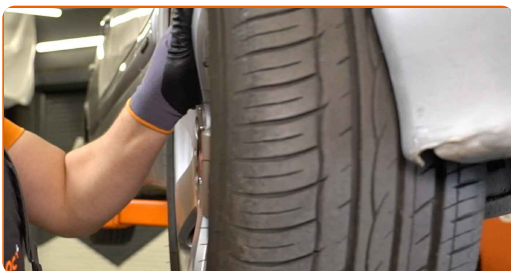


AUTODOC recommends:

- Warning! To avoid injury, hold the wheel while unscrewing the fastening bolts.
Mercedes W210

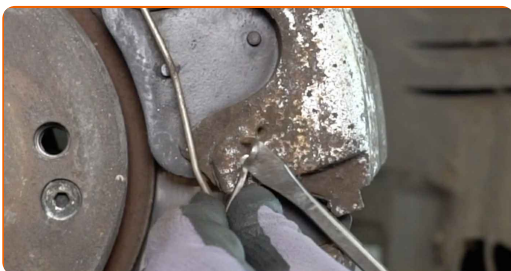
7

Remove the wheel.



8

Detach the brake caliper retaining spring. Use a crowbar.



9

Disconnect the brake pad wear sensor. Use long nose pliers.



10

Spread the brake pads. Use a crowbar.



11

Remove the caps from the brake caliper guide pin boots. Use a crowbar.



12

Unscrew the brake caliper fasteners. Use HEX No.H7. Use a ratchet wrench.



13

Remove the brake caliper.

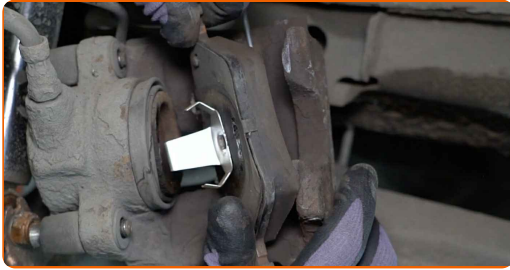


AUTODOC recommends:

- Tie the caliper to the suspension or to the body with a wire without disconnecting from the brake hose to prevent depressurization of the brake system.
- Make sure that the brake caliper is not hanging on the brake hose.
- Don't press the brake pedal after the brake caliper has been removed. As a result, the piston can fall out from the brake cylinder, and brake fluid leakage and depressurization of the system may occur.

14

Remove the brake pads.



Replacement: brake pads – Mercedes W210. AUTODOC recommends:

- Measure the brake disc thickness. Upon reaching the wear limit the part must be replaced.

15

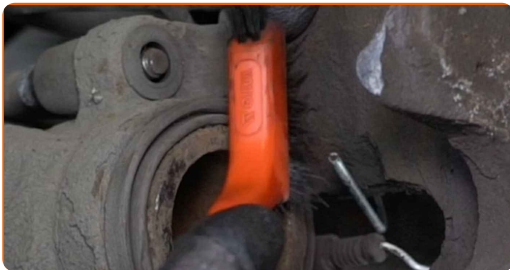
Clean the brake caliper bracket from dirt and dust. Use a wire brush. Use a brake cleaner.

AUTODOC recommends:

- After applying the spray, wait a few minutes.
- Check the brake caliper bracket, brake caliper guide pins and boots. Clean them. Replace, if necessary.

16

Treat the brake caliper piston. Use a nylon cleaning brush. Use a brake cleaner.



AUTODOC recommends:

- After applying the spray, wait a few minutes.

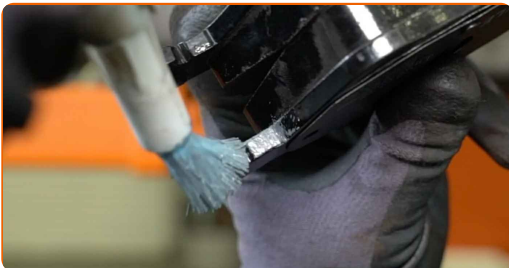
17

Press in the brake caliper piston. Use brake caliper wind back tool.



18

Treat the brake pads in the area where their surface comes into contact with the brake caliper bracket. Use anti-squeal paste.

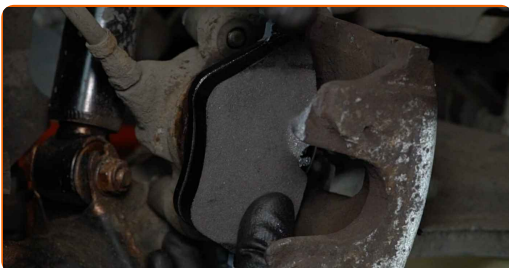


Replacement: brake pads – Mercedes W210. AUTODOC experts recommend:

- Make sure the disc surface is clean before installing the pads.

19

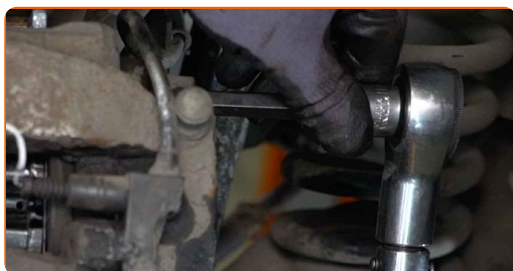
Install new brake pads.



20 Install the brake caliper and fasten it.



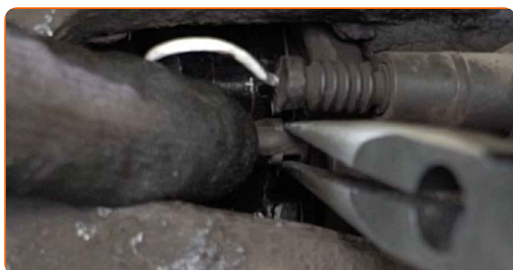
21 Tighten the brake caliper fasteners. Use HEX No.H7. Use a torque wrench. Tighten it to 25 Nm torque.



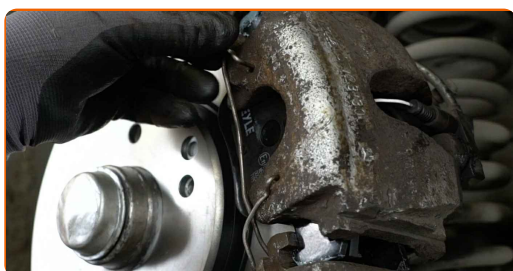
22 Install the caps on the brake caliper guide pin boots.



23 Connect the brake pad wear sensor.



24 Install the brake pad retaining clip. Use a crowbar.



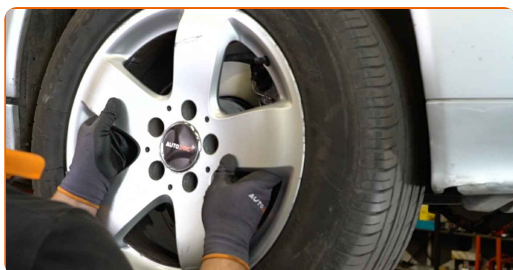
25 Treat the surface where the brake disc contacts the wheel rim. Use ceramic grease.



26 Clean the brake disk surface. Use a brake cleaner.



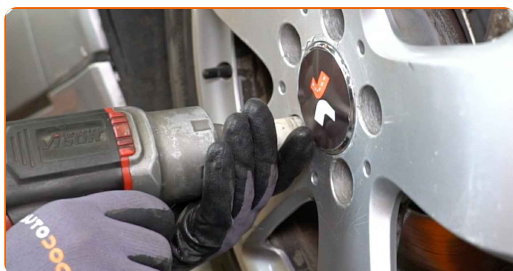
27 Install the wheel.



AUTODOC recommends:

- To avoid injury, hold up the wheel when screwing in the fastening bolts.

28 Screw in the wheel bolts. Use wheel impact socket #17. Use a ratchet wrench.



- 29** Lower the car and working in a cross order, tighten the wheel bolts. Use wheel impact socket #17. Use a torque wrench. Tighten it to 110 Nm torque.



- 30** Remove the jacks and chocks.



AUTODOC recommends:

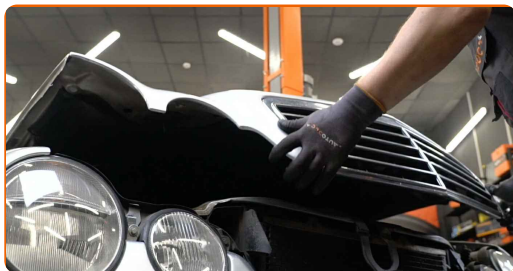
- Without starting the engine, press the brake pedal several times until you feel significant resistance.
- Check the brake fluid level in the expansion tank and refill if necessary.

- 31** Tighten the brake fluid reservoir cap.



32

Close the bonnet.



Replacement: brake pads – Mercedes W210. AUTODOC recommends:

- Slow down smoothly for first 150-200 km after the brake pads replacement. Avoid unnecessary and sharp braking to a stop.

WELL DONE! 

[VIEW MORE TUTORIALS](#)

AUTODOC – TOP QUALITY AND AFFORDABLE CAR PARTS ONLINE

AUTODOC MOBILE APP: GREAT DEALS AND CONVENIENT SHOPPING



+ AUTODOC

GET IT ON  **Google Play**

 **Download on the App Store**

Download

A GREAT SELECTION OF SPARE PARTS FOR YOUR CAR

BUY SPARE PARTS FOR MERCEDES

BRAKE PADS: A WIDE SELECTION

CHOOSE CAR PARTS FOR MERCEDES W210

BRAKE PADS FOR MERCEDES: BUY NOW

**BRAKE PADS FOR MERCEDES W210: THE BEST DEALS &
OFFERS**

DISCLAIMER:

The document contains only general recommendations that may be useful for you when you perform repair or replacement work. AUTODOC shall not be liable for any loss, injury, damage of property occurring in the repair or replacement process due to incorrect use or misinterpretation of the provided information.

AUTODOC shall not be liable for any possible mistakes and uncertainties in this guide. The information provided is for information purposes only and cannot replace advice from specialists.

AUTODOC shall not be liable for incorrect or hazardous usage of equipment, tools and car parts. AUTODOC strongly recommends to be careful and observe the safety rules when performing repair or replacement works. Remember: usage of low quality auto parts does not guarantee you the appropriate level of road safety.

© Copyright 2023 – All the contents of this website, in particular texts, photographs and graphics, are protected by copyright. All rights, including reproduction, publication, editing and translation rights, are reserved by AUTODOC SE.