



How to change rear
brake pads on **Mercedes**
W124 – replacement
guide

VIDEO TUTORIAL



Important!

This replacement procedure can be used for:

MERCEDES-BENZ 190 (W201) E 2.5-16, MERCEDES-BENZ Saloon (W124) 200 2.0 (124.020), MERCEDES-BENZ Saloon (W124) 200 E 2.0 (124.021), MERCEDES-BENZ Saloon (W124) 230 E 2.3 (124.023), MERCEDES-BENZ Saloon (W124) 260 E 2.6 (124.026), MERCEDES-BENZ Saloon (W124) 300 E 3.0, MERCEDES-BENZ Saloon (W124) 300 E 3.0 (124.030), MERCEDES-BENZ Saloon (W124) 300 E 3.0 4-matic (124.230), MERCEDES-BENZ Saloon (W124) 300 E 3.0 4-matic, MERCEDES-BENZ Saloon (W124) 200 D 2.0 (124.120), MERCEDES-BENZ Saloon (W124) 250 D 2.5 (124.125), MERCEDES-BENZ E-Class Saloon (W124) E 250 D (124.126, 124.129), MERCEDES-BENZ Saloon (W124) 250 2.5 Turbo diesel (124.128), MERCEDES-BENZ Saloon (W124) 300 D 3.0 (124.130), MERCEDES-BENZ Saloon (W124) 300 D 3.0 4-matic (124.330), (+ 26)

The steps may slightly vary depending on the car design.

REPLACEMENT: BRAKE PADS – MERCEDES W124.
 TOOLS YOU'LL NEED:



- Wire brush
- WD-40 spray
- Brake cleaner
- All-purpose cleaning spray
- Ceramic grease
- Torque wrench
- Combination spanner #17
- Drive socket # 13
- Drive socket # 17
- HEX bit No.H5
- Wheel impact socket #17
- Ratchet wrench
- Flat Screwdriver
- Pin punch
- Hammer
- Tap wrench
- Long nose pliers
- Crow bar
- Wheel chock

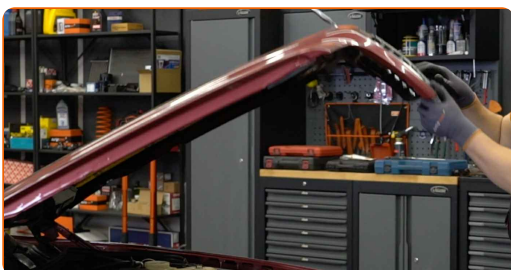
BUY TOOLS

Replacement: brake pads – Mercedes W124. AUTODOC recommends:

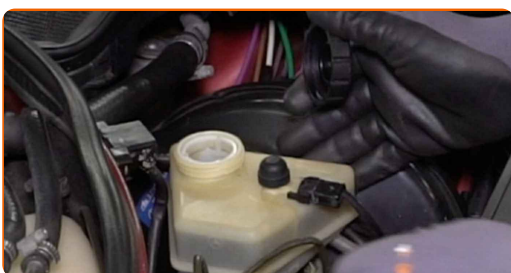
- Perform the replacement of brake pads in complete set for each axis. This provides effective braking.
- The replacement procedure is identical for all brake pads on the same axle.
- All work should be done with the engine stopped.

REPLACEMENT: BRAKE PADS – MERCEDES W124. USE THE FOLLOWING PROCEDURE:

1 Open the bonnet.



2 Unscrew the brake fluid reservoir cap.



3 Secure the wheels with chocks.

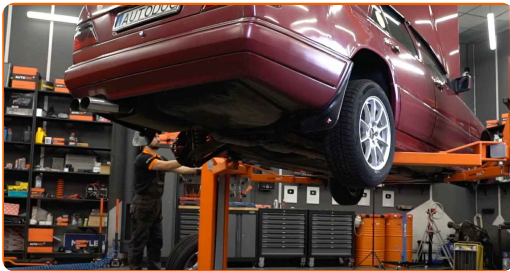
4

Loosen the wheel bolts. Use wheel impact socket #17. Use a tap wrench.



5

Raise the car.



AUTODOC recommends:

- If you are using a jack, make sure it rests on a flat surface without any unevenness.
- Be sure to additionally secure the car with jack stands.

6

Unscrew the wheel bolts.



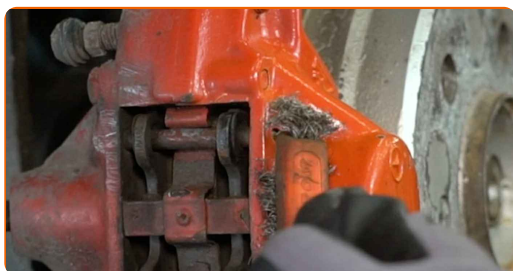
Replacement: brake pads – Mercedes W124. Tip:

- To avoid injury, hold up the wheel when unscrewing the bolts.

7 Remove the wheel.



8 Clean the brake pad guide pins. Use a wire brush. Use all-purpose cleaning spray.



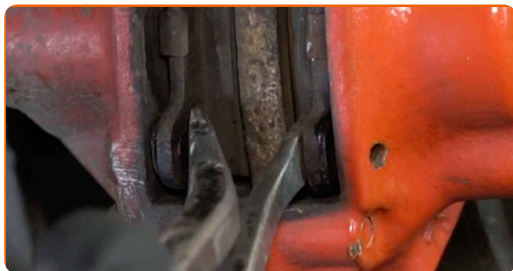
9 Remove the brake pad guide pins. Use a pin punch. Use a hammer.



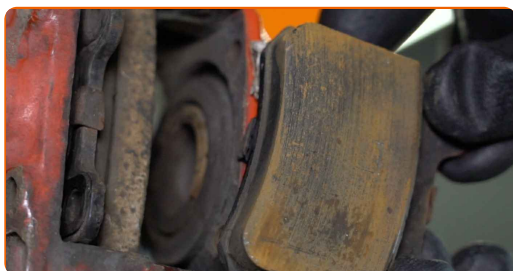
10 Remove the retaining spring of the brake pads.



11 Spread the brake pads. Use a crowbar (2 pieces).



12 Remove the brake pads.



AUTODOC recommends:

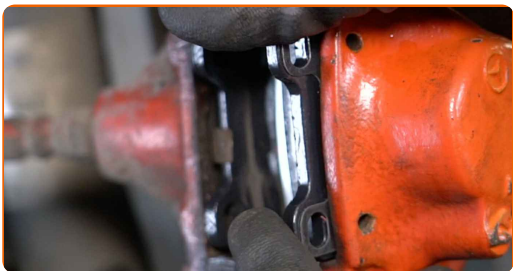
- Measure the brake disc thickness. Upon reaching the wear limit the part must be replaced.

13 Clean the mounting seats of the brake pads on the brake caliper bracket. Use a wire brush. Use a brake cleaner.

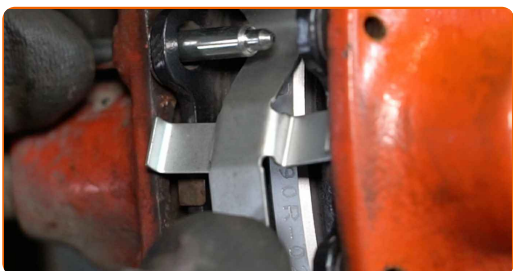
AUTODOC recommends:

- Replacement: brake pads – Mercedes W124. After applying the spray, wait a few minutes.

14 Install new brake shoes.



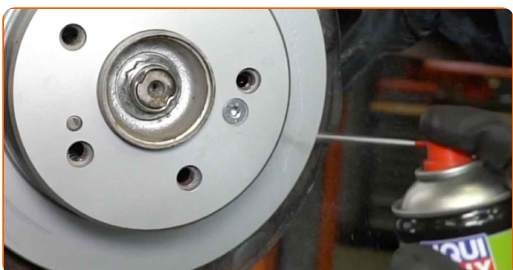
15 Install the retaining spring of the brake pads.



16 Install the brake pad guide pins. Use a pin punch. Use a hammer.



17 Clean the brake disk surface. Use a brake cleaner.



18 Treat the surface where the brake disc contacts the wheel rim. Use ceramic grease.



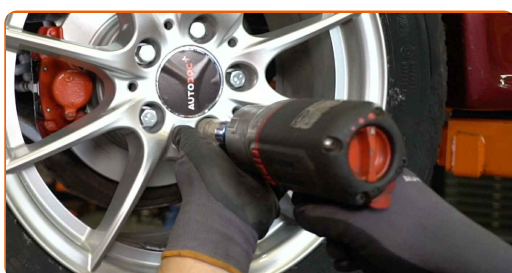
19 Install the wheel.



AUTODOC recommends:

- Important! Hold the wheel while screwing in the fastening bolts. Mercedes W124

20 Screw in the wheel bolts. Use wheel impact socket #17. Use a ratchet wrench.



21 Lower the car and working in a cross order, tighten the wheel bolts. Use wheel impact socket #17. Use a torque wrench. Tighten it to 110 Nm torque.



22

Remove the jacks and chocks.



AUTODOC recommends:

- Mercedes W124 – Press the brake pedal several times with the engine shut down until you feel the resistance built up.
- Check the brake fluid level in the expansion tank and top up if necessary.

23

Tighten the brake fluid reservoir cap.



24

Close the bonnet.



Replacement: brake pads – Mercedes W124. Tip from AUTODOC experts:

- Slow down smoothly for first 150-200 km after the brake pads replacement. Avoid unnecessary and sharp braking to a stop.

WELL DONE! 

[VIEW MORE TUTORIALS](#)

AUTODOC – TOP QUALITY AND AFFORDABLE CAR PARTS ONLINE

AUTODOC MOBILE APP: GREAT DEALS AND CONVENIENT SHOPPING



+ AUTODOC

GET IT ON  **Google Play**

 **Download on the App Store**

Download

A GREAT SELECTION OF SPARE PARTS FOR YOUR CAR

BUY SPARE PARTS FOR MERCEDES

BRAKE PADS: A WIDE SELECTION

CHOOSE CAR PARTS FOR MERCEDES W124

BRAKE PADS FOR MERCEDES: BUY NOW

**BRAKE PADS FOR MERCEDES W124: THE BEST DEALS &
OFFERS**

DISCLAIMER:

The document contains only general recommendations that may be useful for you when you perform repair or replacement work. AUTODOC shall not be liable for any loss, injury, damage of property occurring in the repair or replacement process due to incorrect use or misinterpretation of the provided information.

AUTODOC shall not be liable for any possible mistakes and uncertainties in this guide. The information provided is for information purposes only and cannot replace advice from specialists.

AUTODOC shall not be liable for incorrect or hazardous usage of equipment, tools and car parts. AUTODOC strongly recommends to be careful and observe the safety rules when performing repair or replacement works. Remember: usage of low quality auto parts does not guarantee you the appropriate level of road safety.

© Copyright 2023 – All the contents of this website, in particular texts, photographs and graphics, are protected by copyright. All rights, including reproduction, publication, editing and translation rights, are reserved by AUTODOC SE.