



How to change pollen
filter on **Opel Corsa S93** –
replacement guide

VIDEO TUTORIAL



Important!

This replacement procedure can be used for:

OPEL Calibra A (C89) 2.0 i (M07), OPEL Calibra A (C89) 2.0 i 4x4 (M07), OPEL Calibra A (C89) 2.0 i 16V (M07), OPEL Calibra A (C89) 2.0 i 16V 4x4 (M07), OPEL Calibra A (C89) 2.0 i Turbo 4x4 (M07), OPEL Calibra A (C89) 2.5 i V6 (M07), OPEL Astra F CC (T92) 1.7 TDS (F08, M08, F68, M68), OPEL Astra F Saloon (T92) 1.7 TDS (F19, M19), OPEL Astra F CC (T92) 1.7 D (F08, M08, F68, M68), OPEL Astra F Saloon (T92) 1.7 D (F19, M19), OPEL Astra F CC (T92) 1.4 i (F08, M08, F68, M68), OPEL Astra F Saloon (T92) 1.4 i (F19, M19), OPEL Astra F Saloon (T92) 1.4 Si (F19, M19), OPEL Astra F CC (T92) 1.4 Si (F08, M08, F68, M68), OPEL Astra F Convertible (T92) 1.6 i, (+ 77)

The steps may slightly vary depending on the car design.

REPLACEMENT: POLLEN FILTER – OPEL CORSA S93.
LIST OF THE TOOLS YOU'LL NEED:



- Wire brush
- WD-40 spray
- Copper grease
- Torque wrench
- Combination spanner #24
- Drive socket # 8
- Drive socket # 13
- Ratchet wrench
- Phillips Screwdriver
- Universal puller
- Fender cover

BUY TOOLS

Replacement: pollen filter – Opel Corsa S93. Tip from AUTODOC:

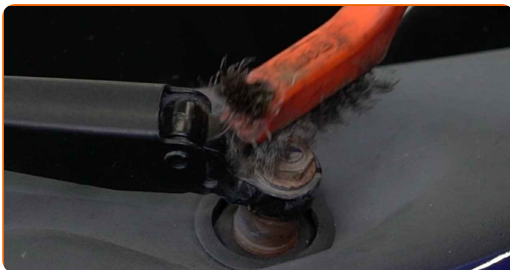
- Replace the cabin filter at least once every six months, in early spring and autumn seasons.
- Follow the terms, recommendations and requirements of the part operation provided by the manufacturer.
- If the air flow into the cabin has sharply reduced, replace the filter before a scheduled maintenance.
- Please note: all work on the car – Opel Corsa S93 – should be done with the engine switched off.

CARRY OUT REPLACEMENT IN THE FOLLOWING ORDER:

1 Remove the windscreen wiper arm nut covers.



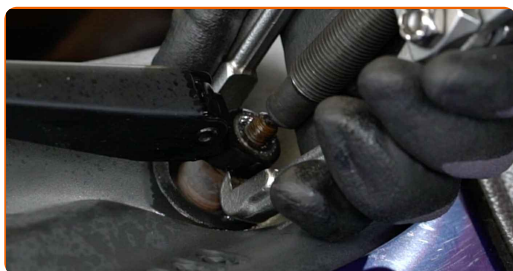
2 Clean the fasteners of the wiper arms. Use a wire brush. Use WD-40 spray.



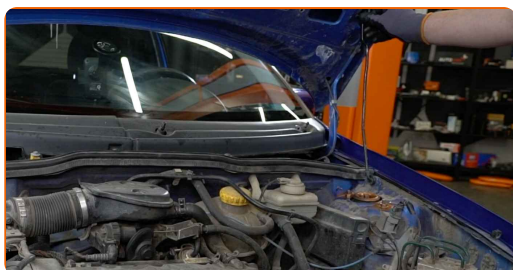
3 Unscrew the fasteners of the windscreen wiper arms. Use a drive socket #13. Use a ratchet wrench.



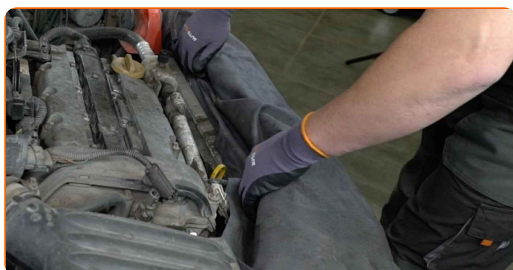
4 Remove the wiper arms. Use a universal puller.



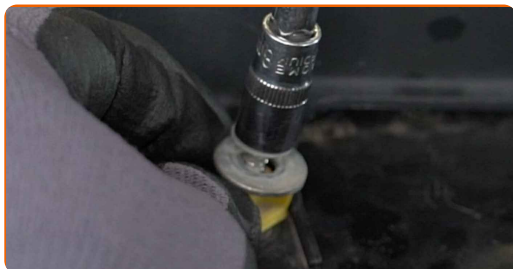
5 Open the bonnet.



6 Use a fender protection cover to prevent damaging paintwork and plastic parts of the car.



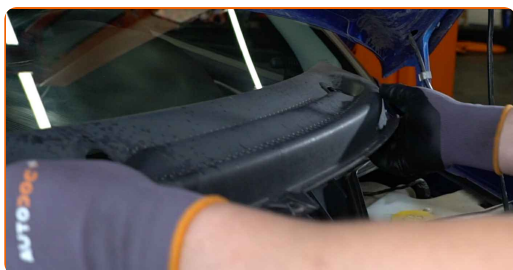
7 Unscrew the fasteners of the cowl grille. Use a drive socket #8. Use a ratchet wrench. Use a Phillips screwdriver.



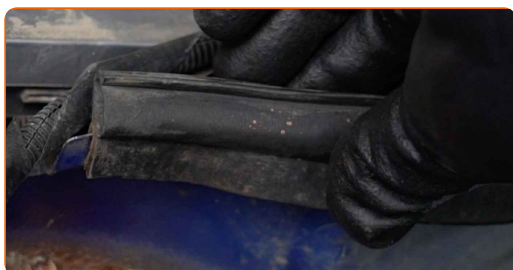
8 Remove the wiper cowl grille located on the left side.



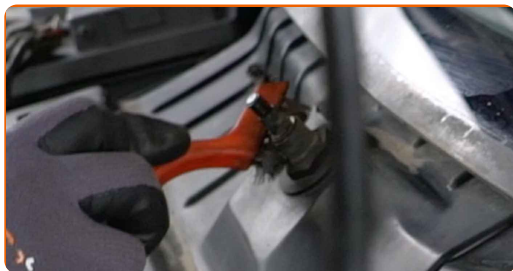
9 Remove the wiper cowl grille located on the right side.



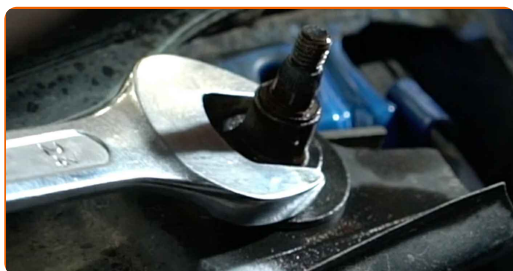
10 Remove the cowl grille seal.



11 Clean the plastic panel fasteners. Use a wire brush. Use WD-40 spray.



12 Unscrew the plastic panel fasteners. Use a combination spanner #24.



13 Remove the plastic panel.



14 Press the pollen filter retaining clips to release them.

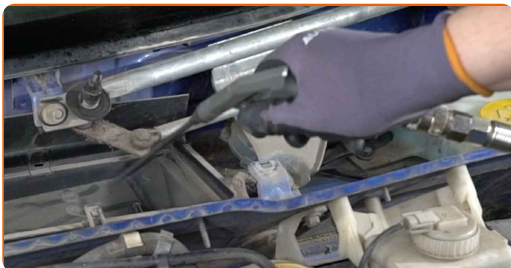


15 Remove the cabin filter.

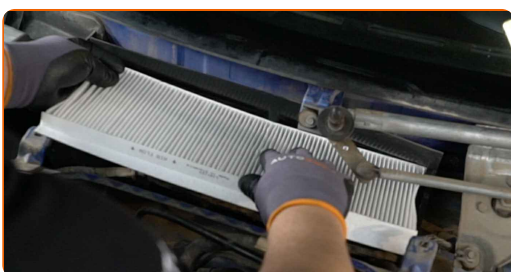


16 Switch on the air recirculation mode.

17 Clean the mounting seat of the cabin filter.



18 Insert a new filter element into the filter housing.



AUTODOC recommends:

- Replacement: pollen filter – Opel Corsa S93. Be sure to position the filtering element correctly. Avoid misalignment.
- Follow the air flow direction arrow on the filter.
- Attention! Use quality filters – Opel Corsa S93.

19 Lock the pollen filter retaining clips in place.



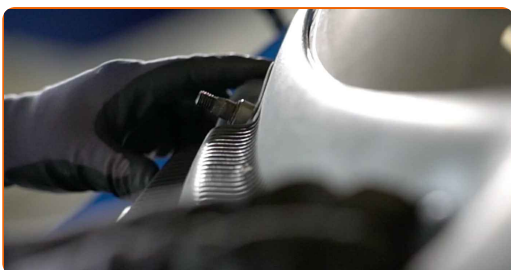
20 Install the plastic panel.



21 Screw on the plastic panel fasteners. Use a combination spanner #24.



22 Install the wiper cowl grille located on the right side.



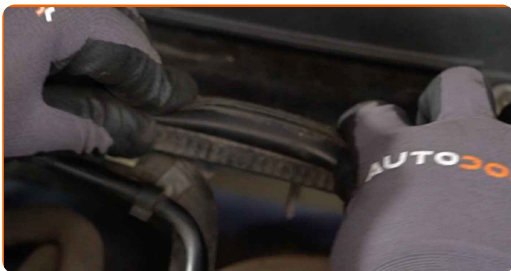
23 Install the wiper cowl grille on the left side.



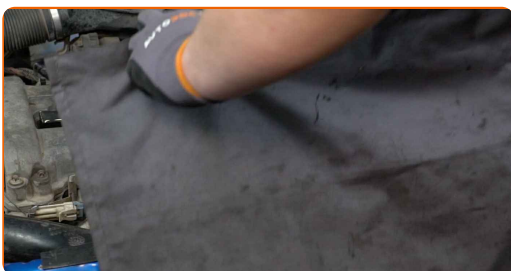
24 Install and secure the cowl grille. Use a drive socket #8. Use a ratchet wrench. Use a Phillips screwdriver.



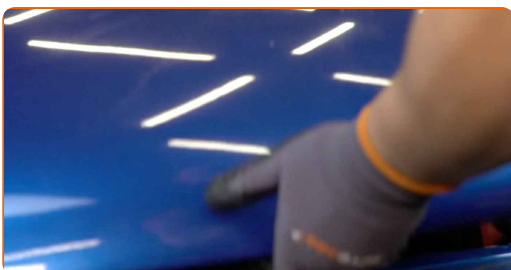
25 Install the cowl grille seal.



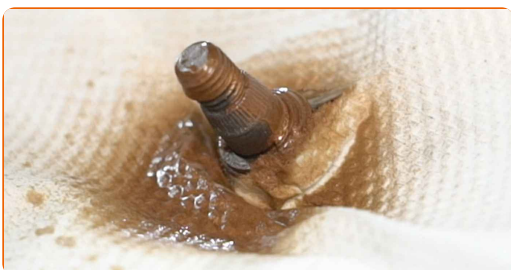
26 Remove the fender protection cover.



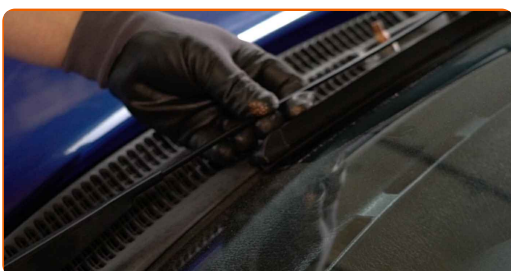
27 Close the hood.



28 Treat the wiper arm fasteners. Use copper grease.



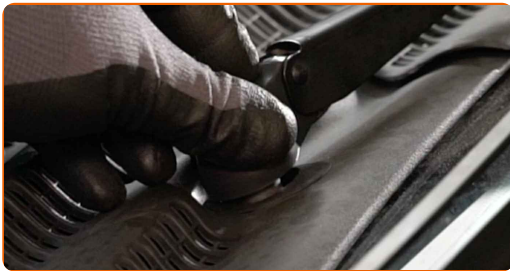
29 Install the wiper arms.



30 Tighten the wiper arm fasteners. Use a drive socket #13. Use a torque wrench. Tighten it to 14 Nm torque.



31 Install the nut covers of the windscreen wiper arms.



32 Switch on the ignition.

33 Switch on the air conditioning system. This is necessary in order to make sure that the component operates properly.



34 Switch off the ignition.

WELL DONE! 

VIEW MORE TUTORIALS

AUTODOC – TOP QUALITY AND AFFORDABLE CAR PARTS ONLINE

AUTODOC MOBILE APP: GREAT DEALS AND CONVENIENT SHOPPING



+ AUTODOC

GET IT ON
Google Play

Download on the
App Store

Download

A GREAT SELECTION OF SPARE PARTS FOR YOUR CAR

BUY SPARE PARTS FOR OPEL

POLLEN FILTER: A WIDE SELECTION

CHOOSE CAR PARTS FOR OPEL CORSA S93

POLLEN FILTER FOR OPEL: BUY NOW

POLLEN FILTER FOR OPEL CORSA S93: THE BEST DEALS & OFFERS

DISCLAIMER:

The document contains only general recommendations that may be useful for you when you perform repair or replacement work. AUTODOC shall not be liable for any loss, injury, damage of property occurring in the repair or replacement process due to incorrect use or misinterpretation of the provided information.

AUTODOC shall not be liable for any possible mistakes and uncertainties in this guide. The information provided is for information purposes only and cannot replace advice from specialists.

AUTODOC shall not be liable for incorrect or hazardous usage of equipment, tools and car parts. AUTODOC strongly recommends to be careful and observe the safety rules when performing repair or replacement works. Remember: usage of low quality auto parts does not guarantee you the appropriate level of road safety.

© Copyright 2023 – All the contents of this website, in particular texts, photographs and graphics, are protected by copyright. All rights, including reproduction, publication, editing and translation rights, are reserved by AUTODOC SE.