



How to change front ABS
sensor on **Honda Civic 8**
– replacement guide

VIDEO TUTORIAL



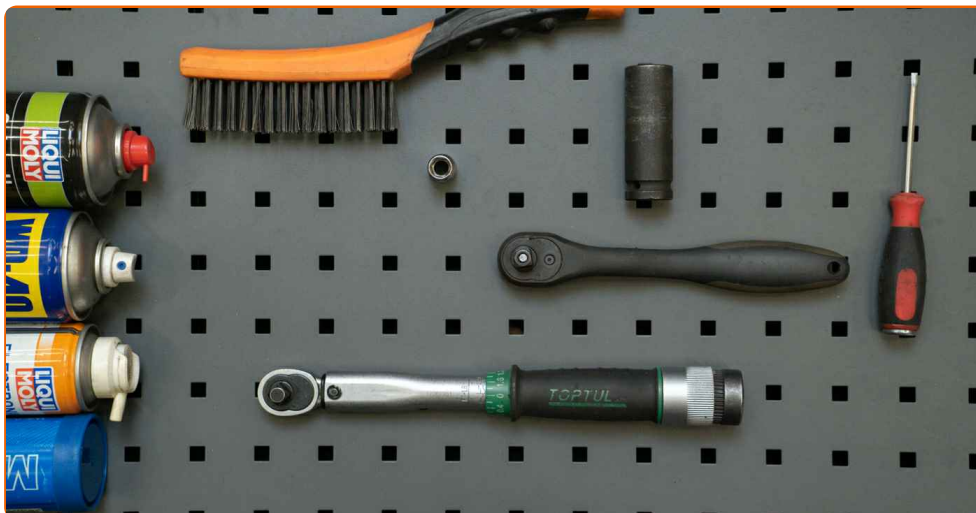
Important!

This replacement procedure can be used for:

HONDA CIVIC VIII Hatchback (FN, FK) 1.4 (FK1), HONDA CIVIC VIII Hatchback (FN, FK) 2.2 CTDi (FK3), HONDA CIVIC VIII Hatchback (FN, FK) 2.0 R, HONDA CIVIC VIII Hatchback (FN, FK) 1.4 (FK1, FN4), HONDA CIVIC VIII Hatchback (FN, FK) 2.0 i-VTEC Type R (FN2)

The steps may slightly vary depending on the car design.

REPLACEMENT: ABS SENSOR – HONDA CIVIC 8. TOOLS YOU'LL NEED:



- Wire brush
- WD-40 spray
- Brake cleaner
- Dielectric grease
- Multipurpose grease
- Ceramic grease
- Torque wrench
- Drive socket # 10
- Wheel impact socket #19
- Ratchet wrench
- Tap wrench
- Clip removal tool
- Wheel chock

BUY TOOLS

Replacement: ABS sensor – Honda Civic 8. Professionals recommend:

- All work should be done with the engine stopped.

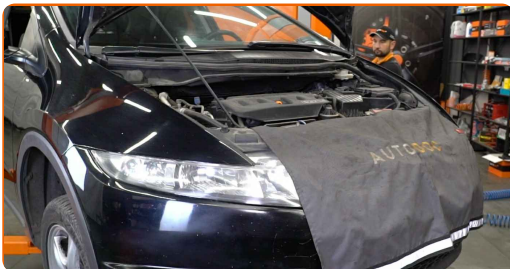
REPLACEMENT: ABS SENSOR – HONDA CIVIC 8. RECOMMENDED SEQUENCE OF STEPS:

1 Secure the wheels with chocks.

2 Loosen the wheel bolts. Use wheel impact socket #19. Use a tap wrench.



3 Raise the car.



Replacement: ABS sensor – Honda Civic 8. AUTODOC experts recommend:

- If you are using a jack, make sure it rests on a flat surface without any unevenness.
- Be sure to additionally secure the car with jack stands.

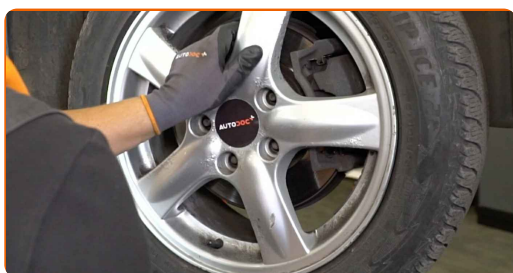
4 Unscrew the wheel bolts.



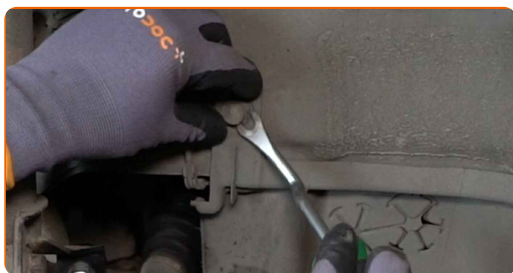
AUTODOC recommends:

- Important! Hold the wheel while unscrewing the fastening bolts. Honda Civic 8

5 Remove the wheel.



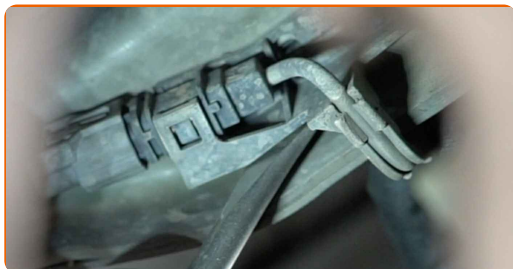
6 Remove the plastic clips of the wheel arch liner. Use a clip removal tool.



7 Remove the central section of the wheel arch liner.



8 Detach the ABS sensor connector holder. Use a clip removal tool.



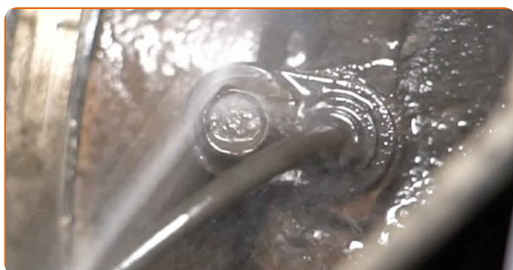
9 Detach the ABS sensor connector.



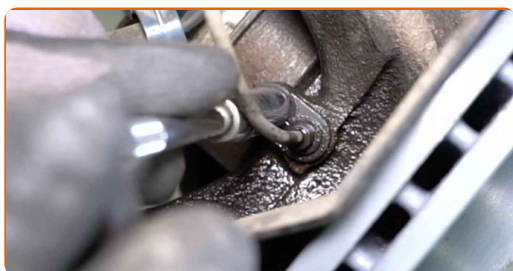
10 Disconnect the ABS sensor wiring. Use a clip removal tool.



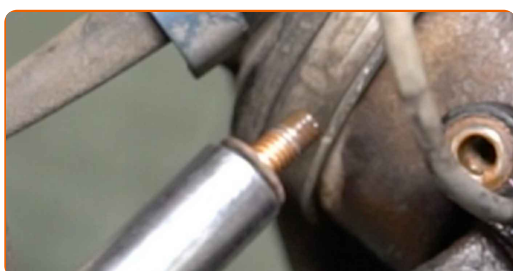
11 Clean the ABS sensor fastener. Use a wire brush. Use WD-40 spray.



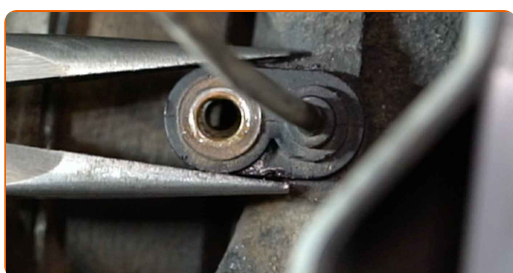
- 12** Unscrew the fastener connecting the ABS sensor to the steering knuckle. Use a drive socket #10. Use a ratchet wrench.



- 13** Remove the fastening bolt.



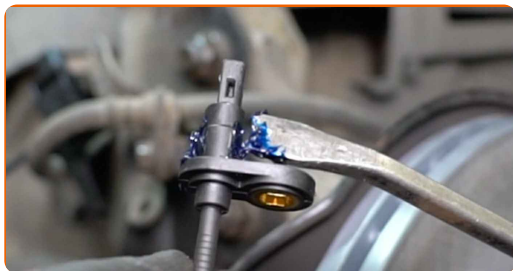
- 14** Disconnect the ABS sensor.



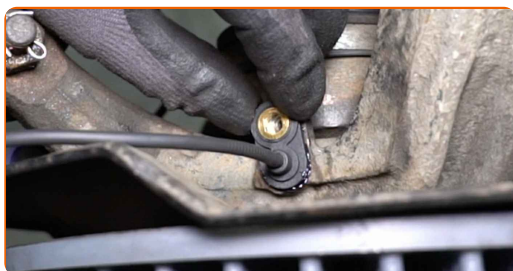
Replacement: ABS sensor – Honda Civic 8. AUTODOC recommends:

- If the sensor is heavily corroded and cannot be dismantled, you might need to perform additional steps using special tools.
- For more details, refer to the video for this manual.

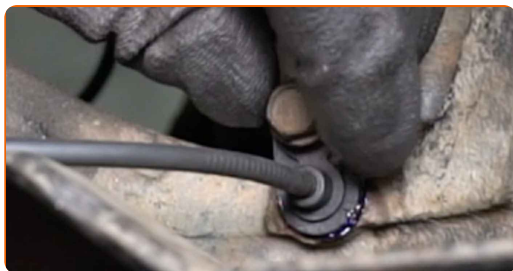
15 Treat the mounting seat of the ABS sensor. Use a multipurpose grease.



16 Install the ABS sensor on the steering knuckle and secure it.



17 Install the fastening bolt.



18 Tighten the fastener that connects the ABS sensor to the steering knuckle. Use a drive socket #10. Use a torque wrench. Tighten it to 10 Nm torque.



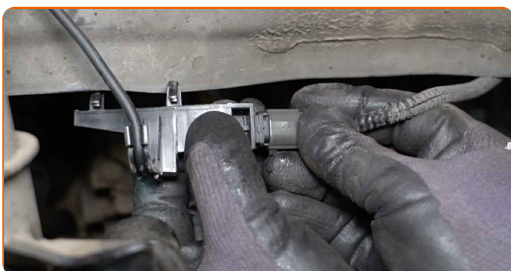
19 Connect the ABS sensor wiring.



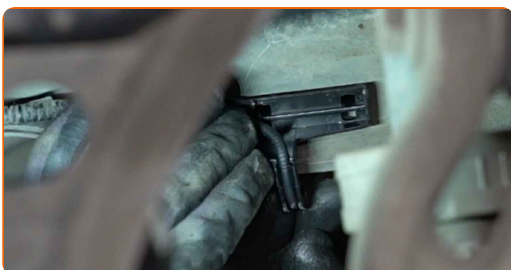
20 Treat the ABS sensor connector. Use dielectric grease.



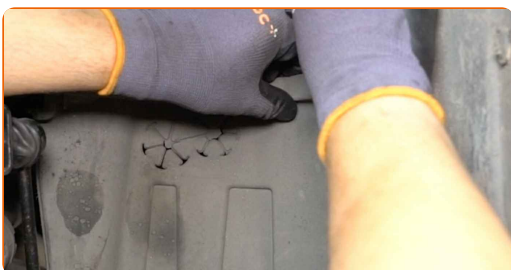
21 Attach the ABS sensor connector.



22 Reattach the ABS sensor connector holder.



23 Reinstall the central section of the wheel arch liner.



24 Reinstall the plastic clips of the wheel arch liner.



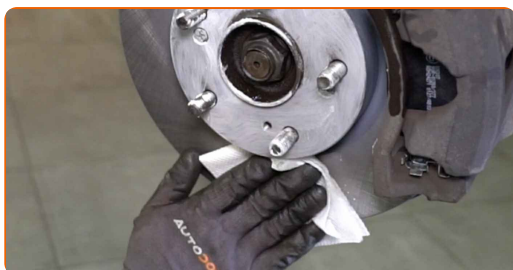
25 Clean the wheel rim mounting seat. Use a wire brush.



26 Treat the surface where the brake disc contacts the wheel rim. Use ceramic grease.



27 Clean the brake disk surface. Use a brake cleaner.



28 Install the wheel.

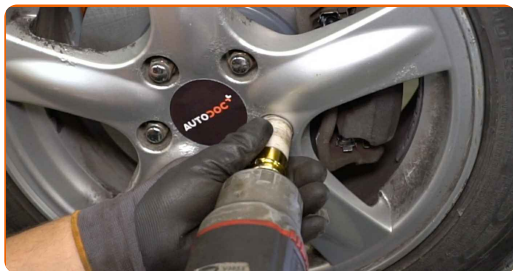


Replacement: ABS sensor – Honda Civic 8. Tip from AUTODOC:

- To avoid injury, hold up the wheel when screwing in the fastening bolts.

29

Screw in the wheel bolts. Use wheel impact socket #19. Use a ratchet wrench.



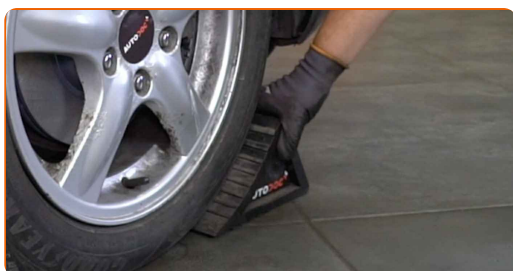
30

Lower the car and working in a cross order, tighten the wheel bolts. Use wheel impact socket #19. Use a torque wrench. Tighten it to 108 Nm torque.



31

Remove the jacks and chocks.



WELL DONE! 

VIEW MORE TUTORIALS

AUTODOC – TOP QUALITY AND AFFORDABLE CAR PARTS ONLINE

AUTODOC MOBILE APP: GREAT DEALS AND CONVENIENT SHOPPING



+ AUTODOC

GET IT ON  **Google Play**

 **Download on the App Store**

Download

A GREAT SELECTION OF SPARE PARTS FOR YOUR CAR

BUY SPARE PARTS FOR HONDA

ABS SENSOR: A WIDE SELECTION

CHOOSE CAR PARTS FOR HONDA CIVIC 8

ABS SENSOR FOR HONDA: BUY NOW

ABS SENSOR FOR HONDA CIVIC 8: THE BEST DEALS & OFFERS

DISCLAIMER:

The document contains only general recommendations that may be useful for you when you perform repair or replacement work. AUTODOC shall not be liable for any loss, injury, damage of property occurring in the repair or replacement process due to incorrect use or misinterpretation of the provided information.

AUTODOC shall not be liable for any possible mistakes and uncertainties in this guide. The information provided is for information purposes only and cannot replace advice from specialists.

AUTODOC shall not be liable for incorrect or hazardous usage of equipment, tools and car parts. AUTODOC strongly recommends to be careful and observe the safety rules when performing repair or replacement works. Remember: usage of low quality auto parts does not guarantee you the appropriate level of road safety.

© Copyright 2023 – All the contents of this website, in particular texts, photographs and graphics, are protected by copyright. All rights, including reproduction, publication, editing and translation rights, are reserved by AUTODOC GmbH.