



How to change front
lower arm on **CITROËN**
C2 Enterprise (JG) –
replacement guide

SIMILAR VIDEO TUTORIAL



This video shows the replacement procedure of a similar car part on another vehicle

Important!

This replacement procedure can be used for:
CITROËN C2 Enterprise (JG) 1.4 HDi, CITROËN C2 Enterprise (JG) 1.1

The steps may slightly vary depending on the car design.

This tutorial was created based on the replacement procedure for a similar car part on: CITROËN C3 I Hatchback (FC, FN) 1.4 i

**REPLACEMENT: FRONT LOWER ARM – CITROËN C2
ENTERPRISE (JG). TOOLS YOU NEED:**



- Wire brush
- WD-40 spray
- Brake cleaner
- Copper grease
- Combination spanner #14
- Drive socket # 16
- 12-point socket # 22
- Wheel impact socket #17
- Ratchet wrench
- Torque wrench
- Pin punch
- Hammer
- Tap wrench
- Crow bar
- Hydraulic transmission jack
- Wheel chock

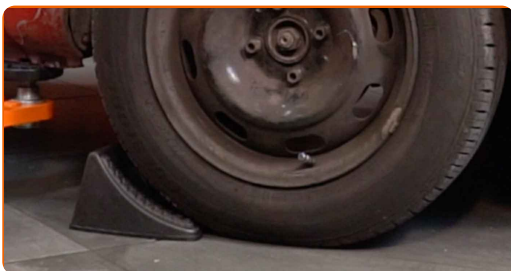
Buy tools

Replacement: front lower arm – CITROËN C2 Enterprise (JG). AUTODOC recommends:

- The replacement procedure is identical for the left and right lower control arms.
- All work should be done with the engine stopped.

REPLACEMENT: FRONT LOWER ARM – CITROËN C2 ENTERPRISE (JG). USE THE FOLLOWING PROCEDURE:

1 Secure the wheels with chocks.



2 Loosen the wheel mounting bolts. Use wheel impact socket #17.



3 Raise the front of the car and secure on supports.

4

Unscrew the wheel bolts.

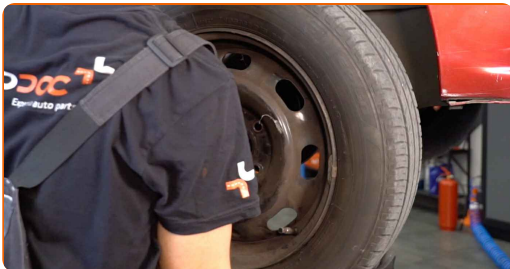


Replacement: front lower arm – CITROËN C2 Enterprise (JG). AUTODOC experts recommend:

- To avoid injury, hold up the wheel when unscrewing the bolts.

5

Remove the wheel.



6

Clean all joints of the arm. Use a wire brush. Use WD-40 spray.



Replacement: front lower arm – CITROËN C2 Enterprise (JG). Tip from AUTODOC:

- After applying the spray, wait a few minutes.
- Wear protective goggles.

7 Unscrew the ball joint fastening to the steering knuckle. Use a drive socket #16. Use a combination spanner #14.



8 Remove the fastening bolt.



9 Prop up the steering knuckle. Use a hydraulic transmission jack.



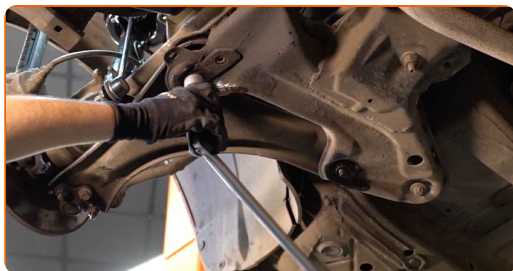
10 Disconnect the lower arm from the steering knuckle. Use a crowbar.



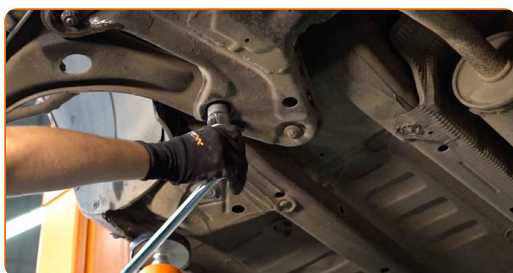
11 Clean all joints of the arm. Use a wire brush. Use WD-40 spray.



12 Unscrew the front arm fastener. Use 12-point socket No.22. Use a tap wrench.



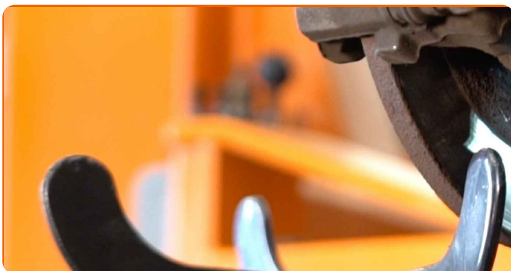
13 Unscrew the rear fastener connecting the control arm to the subframe. Use 12-point socket No.22. Use a tap wrench.



14 Remove the fastening bolts. Use a pin punch. Use a hammer.



15 Remove the support from under the steering knuckle.



AUTODOC recommends:

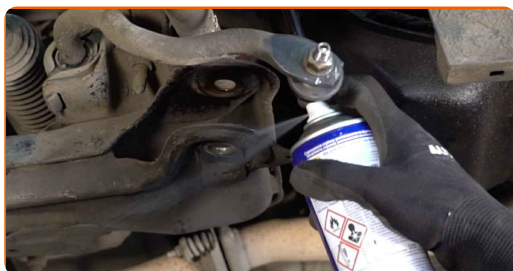
- Replacement: front lower arm – CITROËN C2 Enterprise (JG). Lower the transmission jack smoothly, without jerks, to avoid damaging components and mechanisms.

16 Remove the arm. Use a crowbar.



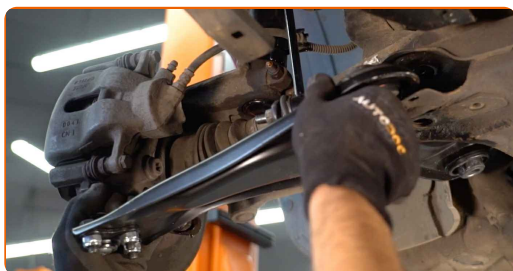
17

Clean the mounting seats and the thread of the suspension arm. Use a wire brush.



18

Install a new arm. Use a crowbar.



Replacement: front lower arm – CITROËN C2 Enterprise (JG). Tip:

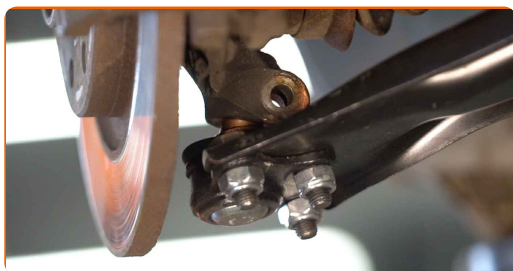
- During the installation process, use only new bolts and nuts.
- Do not damage the ball joint cover.

19

Install the fastening bolts. Use a crowbar.



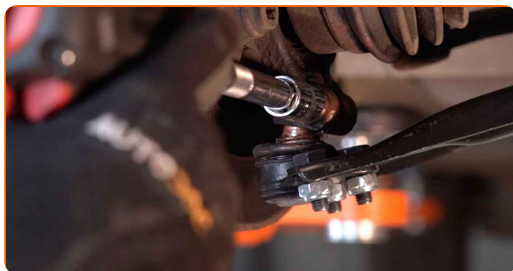
20 Connect the lower arm to the steering knuckle.



21 Install the fastening bolt. Use a hammer.



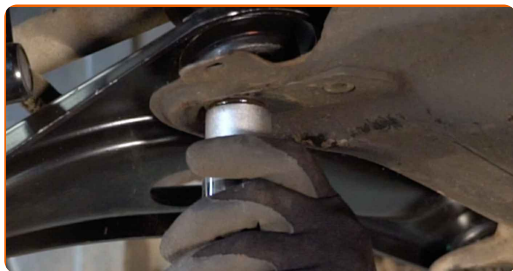
22 Screw the fasteners of the ball joint. Use a drive socket #16. Use a ratchet wrench.



23 Screw the rear arm fastener. Use 12-point socket No.22.



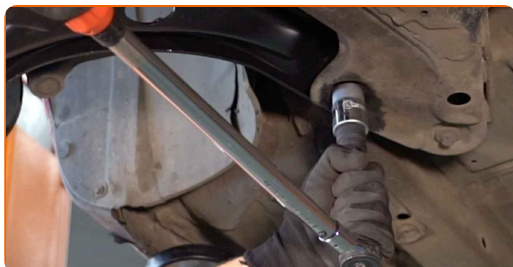
24 Screw the front arm fastener. Use 12-point socket No.22.



25 Tighten the front fastener connecting the control arm to the subframe. Use 12-point socket No.22. Use a torque wrench. Tighten it to 126 Nm torque.



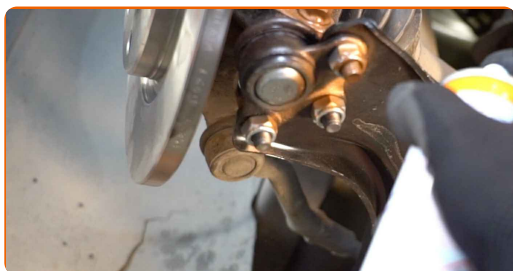
26 Tighten the rear fastener of the control arm. Use 12-point socket No.22. Use a torque wrench. Tighten it to 126 Nm torque.



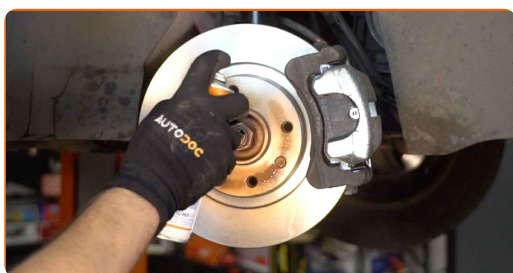
27 Tighten the ball joint fastener. Use a combination spanner #14. Use a drive socket #16. Use a torque wrench. Tighten it to 44 Nm torque.



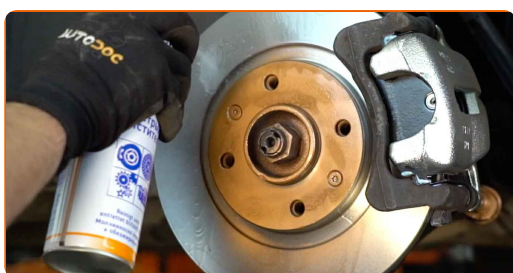
28 Treat all joints of the arm. Use copper grease.



29 Treat the surface where the brake disc contacts the wheel rim. Use copper grease.



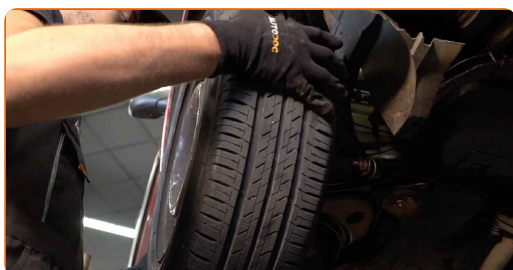
30 Clean the brake disk surface. Use a brake cleaner.



AUTODOC recommends:

- Replacement: front lower arm – CITROËN C2 Enterprise (JG). After applying the spray, wait a few minutes.

31 Install the wheel.

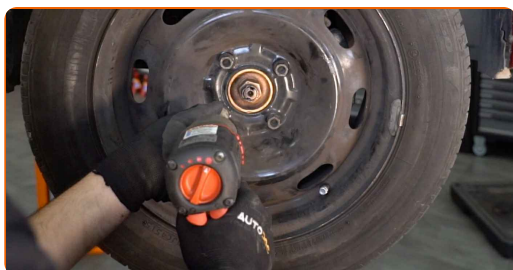


Replacement: front lower arm – CITROËN C2 Enterprise (JG). Tip from AUTODOC experts:

- To avoid injury, hold up the wheel when screwing in the fastening bolts.

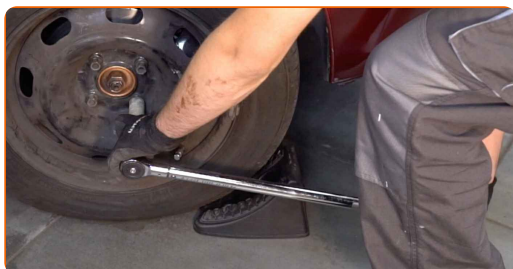
32

Screw in the wheel bolts. Use wheel impact socket #17.



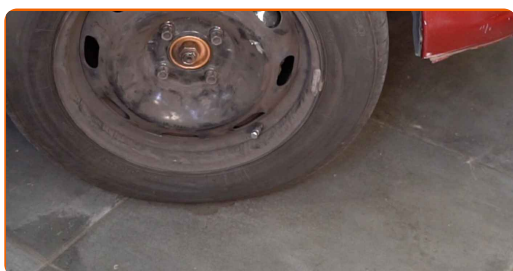
33

Lower the car and working in a cross order, tighten the wheel bolts. Use a torque wrench. Tighten it to 90 Nm torque.



34

Remove the jacks and chocks.



WELL DONE! 

[VIEW MORE TUTORIALS](#)

AUTODOC – TOP QUALITY AND AFFORDABLE CAR PARTS ONLINE

AUTODOC MOBILE APP: GREAT DEALS AND CONVENIENT SHOPPING



+ AUTODOC

GET IT ON
Google Play

Download on the
App Store

Download

A GREAT SELECTION OF SPARE PARTS FOR YOUR CAR

CONTROL ARM: A WIDE SELECTION

(i) DISCLAIMER:

The document contains only general recommendations that may be useful for you when you perform repair or replacement work. AUTODOC shall not be liable for any loss, injury, damage of property occurring in the repair or replacement process due to incorrect use or misinterpretation of the provided information.

AUTODOC shall not be liable for any possible mistakes and uncertainties in this guide. The information provided is for information purposes only and cannot replace advice from specialists.

AUTODOC shall not be liable for incorrect or hazardous usage of equipment, tools and car parts. AUTODOC strongly recommends to be careful and observe the safety rules when performing repair or replacement works. Remember: usage of low quality auto parts does not guarantee you the appropriate level of road safety.

© Copyright 2022 – All the contents of this website, in particular texts, photographs and graphics, are protected by copyright. All rights, including reproduction, publication, editing and translation rights, are reserved by AUTODOC GmbH.