



How to change pollen
filter on **Fiat Bravo 2** –
replacement guide

VIDEO TUTORIAL

** Important!**

This replacement procedure can be used for:

FIAT BRAVO II (198) 1.4 16V, FIAT BRAVO II (198) 1.6 D Multijet, FIAT BRAVO II (198) 1.9 D Multijet, FIAT BRAVO II (198) 1.4 LPG, FIAT STILO Multi Wagon (192) 2.4 20V, FIAT BRAVO II (198) 2.0 D Multijet, FIAT STILO (192) 1.2 16V, FIAT STILO (192) 1.6 16V, FIAT STILO (192) 1.8 16V, FIAT STILO (192) 1.9 JTD, FIAT STILO (192) 2.4 20V, FIAT STILO Multi Wagon (192) 1.6 16V, FIAT STILO Multi Wagon (192) 1.8 16V, FIAT STILO Multi Wagon (192) 1.9 JTD, FIAT STILO (192) 1.4 16V, (+ 15)

The steps may slightly vary depending on the car design.

REPLACEMENT: POLLEN FILTER – FIAT BRAVO 2.
TOOLS YOU MIGHT NEED:



- Phillips Screwdriver

BUY TOOLS

Replacement: pollen filter – Fiat Bravo 2. AUTODOC recommends:

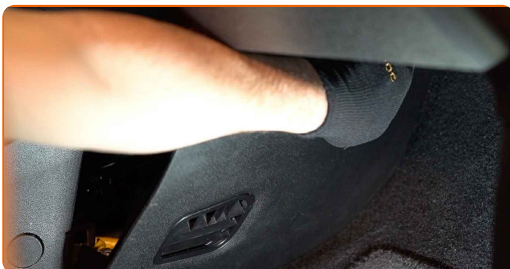
- Replace the cabin filter at least once every six months, in early spring and autumn seasons.
- Follow the terms, recommendations and requirements of the part operation provided by the manufacturer.
- If the air flow into the cabin has sharply reduced, replace the filter before a scheduled maintenance.
- In some cars, the heater unit is located on the passenger side.
- All work should be done with the engine stopped.

REPLACEMENT: POLLEN FILTER – FIAT BRAVO 2. RECOMMENDED SEQUENCE OF STEPS:

1 Move the passenger seat fully backwards.



2 Pry up, carefully release from the fasteners and remove the side trim panel on the passenger side.



3

Unscrew the fasteners of the cabin filter housing cover. Use a Phillips screwdriver.



4

Remove the cabin filter housing cover.



AUTODOC recommends:

- Replacement: pollen filter – Fiat Bravo 2. Do not use excessive force when removing the part as this may damage it.

5

Remove the cabin filter.



Replacement: pollen filter – Fiat Bravo 2. Tip from AUTODOC experts:

- Do not attempt to clean and reuse the filter - it will affect the quality of air cleaning inside the car.

6

Install the cabin filter to its mounting seat.

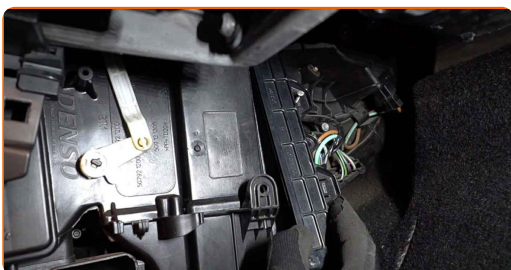


Replacement: pollen filter – Fiat Bravo 2. Professionals recommend:

- Check out the correct location of the filter element. Do not skew.
- Follow the air flow direction arrow on the filter.
- Attention! Use quality filters – Fiat Bravo 2.

7

Reinstall the cabin filter housing cover.



8

Screw in the fasteners of the cabin filter housing cover. Use a Phillips screwdriver.



9

Install the side trim panel. Position the part using the guides and lock the fasteners.



AUTODOC recommends:

- Replacement: pollen filter – Fiat Bravo 2. Do not use excessive force during installation. This may damage the fasteners.

10

Return the passenger seat to its initial position.



11

Switch on the ignition.

**12**

Switch on the air conditioning system. This is necessary in order to make sure that the component operates properly.

**13**

Switch off the ignition.

**WELL DONE!** **VIEW MORE TUTORIALS**

AUTODOC – TOP QUALITY AND AFFORDABLE CAR PARTS ONLINE

AUTODOC MOBILE APP: GREAT DEALS AND CONVENIENT SHOPPING



+ AUTODOC

GET IT ON
Google Play

Download on the
App Store

Download

A GREAT SELECTION OF SPARE PARTS FOR YOUR CAR

BUY SPARE PARTS FOR FIAT

POLLEN FILTER: A WIDE SELECTION

CHOOSE CAR PARTS FOR FIAT BRAVO 2

POLLEN FILTER FOR FIAT: BUY NOW

POLLEN FILTER FOR FIAT BRAVO 2: THE BEST DEALS & OFFERS

DISCLAIMER:

The document contains only general recommendations that may be useful for you when you perform repair or replacement work. AUTODOC shall not be liable for any loss, injury, damage of property occurring in the repair or replacement process due to incorrect use or misinterpretation of the provided information.

AUTODOC shall not be liable for any possible mistakes and uncertainties in this guide. The information provided is for information purposes only and cannot replace advice from specialists.

AUTODOC shall not be liable for incorrect or hazardous usage of equipment, tools and car parts. AUTODOC strongly recommends to be careful and observe the safety rules when performing repair or replacement works. Remember: usage of low quality auto parts does not guarantee you the appropriate level of road safety.

© Copyright 2023 – All the contents of this website, in particular texts, photographs and graphics, are protected by copyright. All rights, including reproduction, publication, editing and translation rights, are reserved by AUTODOC SE.