



How to change rear
brake pads on **BMW Z1**
Roadster – replacement
guide

SIMILAR VIDEO TUTORIAL



This video shows the replacement procedure of a similar car part on another vehicle

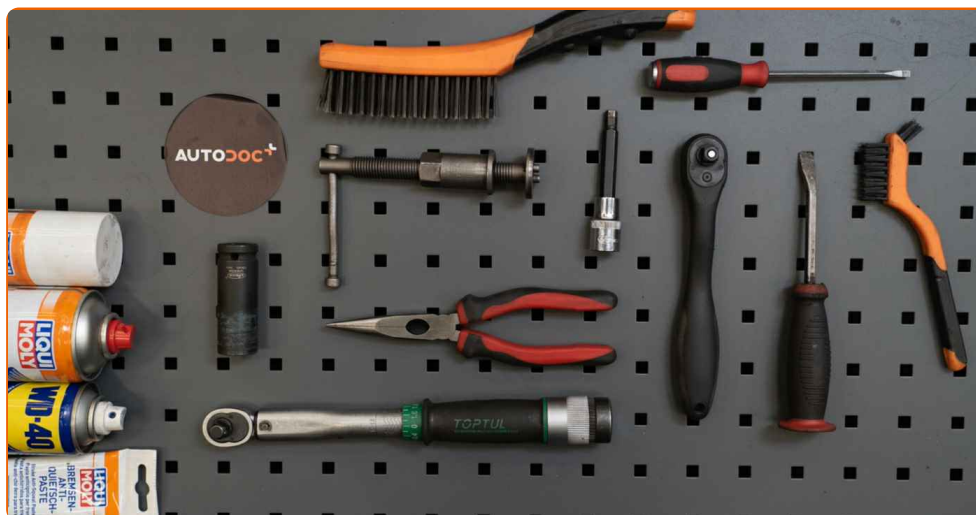
i Important!

This replacement procedure can be used for:
BMW Z1 Roadster 2.5

The steps may slightly vary depending on the car design.

This tutorial was created based on the replacement procedure for a similar car part on: BMW 3 Saloon (E36) 323i 2.5

REPLACEMENT: BRAKE PADS – BMW Z1 ROADSTER. TOOLS YOU MIGHT NEED:



- Wire brush
- Nylon cleaning brush
- Brake cleaner
- Anti-squeal paste
- Copper grease
- Torque wrench
- HEX bit No.H7
- Wheel impact socket #17
- Ratchet wrench
- Round-nose pliers
- Flat screwdriver
- Brake caliper wind back tool
- Crow bar
- Wheel chock

[Buy tools](#)

Replacement: brake pads – BMW Z1 Roadster. Tip from AUTODOC experts:

- Perform the replacement of brake pads in complete set for each axis. This provides effective braking.
- The replacement procedure is identical for all brake pads on the same axle.
- Please note: all work on the car – BMW Z1 Roadster – should be done with the engine switched off.

CARRY OUT REPLACEMENT IN THE FOLLOWING ORDER:

1 Open the hood. Unscrew the brake fluid reservoir cap.

2 Secure the wheels with chocks.

3 Loosen the wheel mounting bolts. Use wheel impact socket #17.



4 Raise the rear of the car and secure on supports.

5 Unscrew the wheel bolts.



AUTODOC recommends:

- Warning! To avoid injury, hold the wheel while unscrewing the fastening bolts.
BMW Z1 Roadster

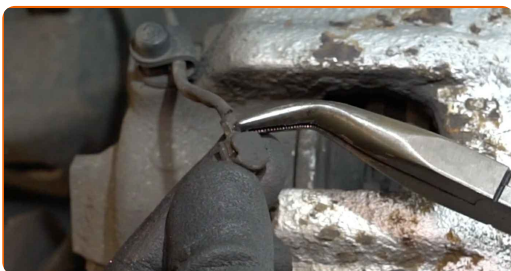
6

Remove the wheel.



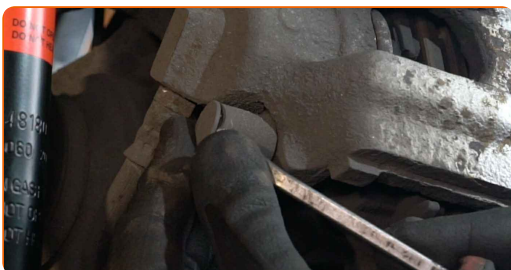
7

Remove the brake pad wear sensor from the brake pad. Use round-nose pliers.



8

Remove the dust boot caps of the brake caliper guide pins. Use a crowbar.



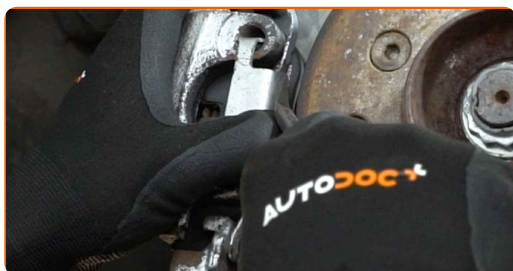
9

Unscrew the brake caliper fastening. Use HEX No.H7. Use a ratchet wrench.



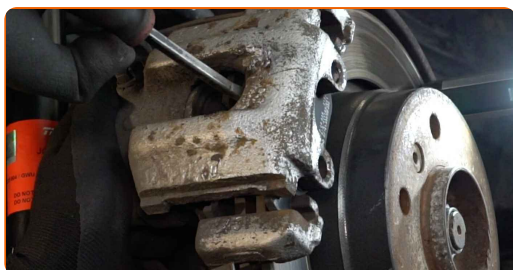
10

Detach the brake caliper retaining spring. Use a crowbar. Use a flat screwdriver.



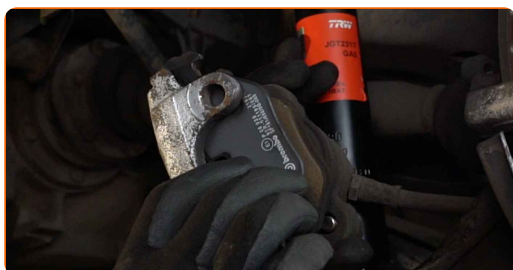
11

Spread the brake pads. Use a crowbar.



12

Remove the brake caliper.



Replacement: brake pads – BMW Z1 Roadster. Tip from AUTODOC experts:

- Tie the caliper to the suspension or to the body with a wire without disconnecting from the brake hose to prevent depressurization of the brake system.
- Make sure that the brake caliper is not hanging on the brake hose.
- Don't press the brake pedal after the brake caliper has been removed. As a result, the piston can fall out from the brake cylinder, and brake fluid leakage and depressurization of the system may occur.
- Check the brake caliper bracket, brake caliper guide pins and boots. Clean them. Replace, if necessary.

13

Remove the brake pads.



Replacement: brake pads – BMW Z1 Roadster. Professionals recommend:

- Measure the brake disc thickness. Upon reaching the wear limit the part must be replaced.

14

Clean the brake caliper bracket from dirt and dust. Use a wire brush. Use a brake cleaner.

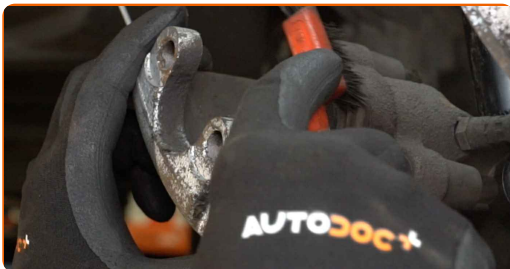


AUTODOC recommends:

- Replacement: brake pads – BMW Z1 Roadster. After applying the spray, wait a few minutes.

15

Treat the brake caliper piston. Use a nylon cleaning brush. Use a brake cleaner.

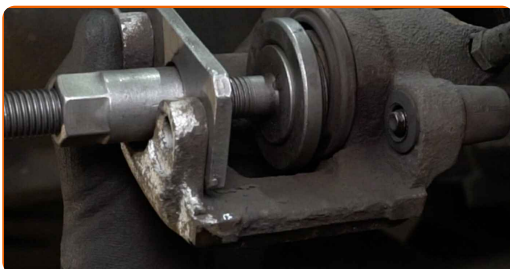


Replacement: brake pads – BMW Z1 Roadster. Tip from AUTODOC experts:

- After applying the spray, wait a few minutes.

16

Press in the brake caliper piston. Use brake caliper wind back tool.



- 17 Treat the brake pads in the area where their surface comes into contact with the brake caliper bracket. Use anti-squeal paste.



Replacement: brake pads – BMW Z1 Roadster. Tip:

- Make sure the disc surface is clean before installing the pads.

- 18 Install new brake pads.



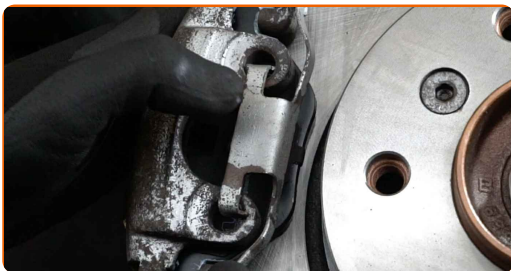
Replacement: brake pads – BMW Z1 Roadster. AUTODOC recommends:

- Make sure the pads are installed with linings facing the disc.

- 19 Install the brake caliper and fix it.



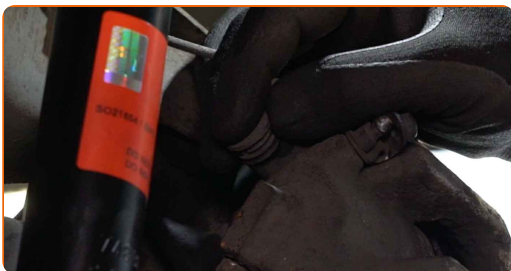
20 Install the brake caliper retaining spring.



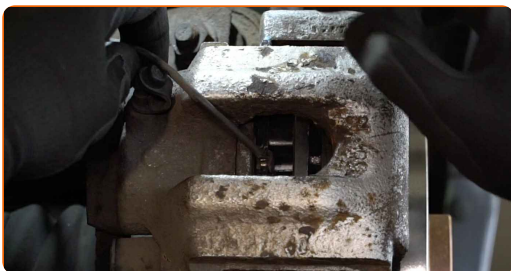
21 Tighten the brake caliper fasteners. Use HEX No.H7. Use a torque wrench. Tighten it to 30 Nm torque.



22 Install the dust boot caps of the brake caliper guide pins.



23 Install the wear sensor on the brake pads. Use round-nose pliers.



24 Treat the surface where the brake disc contacts the wheel rim. Use copper grease.



25

Clean the brake disk surface. Use a brake cleaner.

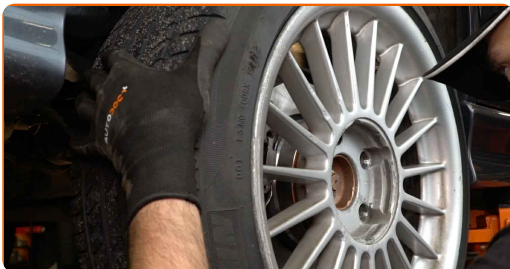


AUTODOC recommends:

- Replacement: brake pads – BMW Z1 Roadster. After applying the spray, wait a few minutes.

26

Install the wheel.



AUTODOC recommends:

- Warning! To avoid injury, hold the wheel while screwing in the fastening bolts on the car. BMW Z1 Roadster

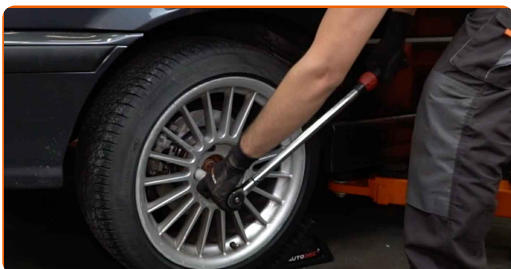
27

Screw in the wheel bolts. Use wheel impact socket #17.



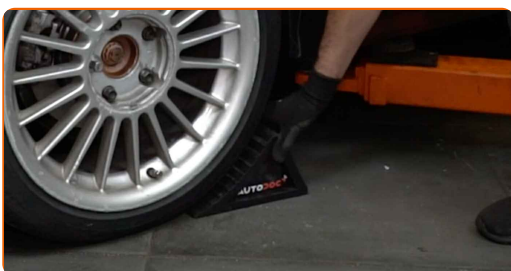
28

Lower the car and working in a cross order, tighten the wheel bolts. Use wheel impact socket #17. Use a torque wrench. Tighten it to 120 Nm torque.



29

Remove the jacks and chocks.



Replacement: brake pads – BMW Z1 Roadster. Professionals recommend:

- Without starting the engine, press the brake pedal several times until you feel significant resistance.
- Check the brake fluid level in the expansion tank and refill if necessary.

30

Tighten the brake fluid reservoir cap. Close the hood.



Replacement: brake pads – BMW Z1 Roadster. Tip from AUTODOC:

- Slow down smoothly for first 150-200 km after the brake pads replacement.
Avoid unnecessary and sharp braking to a stop.

WELL DONE! 

[VIEW MORE TUTORIALS](#)

AUTODOC – TOP QUALITY AND AFFORDABLE CAR PARTS ONLINE

AUTODOC MOBILE APP: GREAT DEALS AND CONVENIENT SHOPPING





 GET IT ON
Google Play

 Download on the
App Store

Download

A GREAT SELECTION OF SPARE PARTS FOR YOUR CAR

BRAKE PADS: A WIDE SELECTION

(i) **DISCLAIMER:**

The document contains only general recommendations that may be useful for you when you perform repair or replacement work. AUTODOC shall not be liable for any loss, injury, damage of property occurring in the repair or replacement process due to incorrect use or misinterpretation of the provided information.

AUTODOC shall not be liable for any possible mistakes and uncertainties in this guide. The information provided is for information purposes only and cannot replace advice from specialists.

AUTODOC shall not be liable for incorrect or hazardous usage of equipment, tools and car parts. AUTODOC strongly recommends to be careful and observe the safety rules when performing repair or replacement works. Remember: usage of low quality auto parts does not guarantee you the appropriate level of road safety.

© Copyright 2023 – All the contents of this website, in particular texts, photographs and graphics, are protected by copyright. All rights, including reproduction, publication, editing and translation rights, are reserved by AUTODOC SE.