



How to change rear  
brake pad wear sensor on  
**BMW 3 Coupe (E92)** –  
replacement guide

## SIMILAR VIDEO TUTORIAL



This video shows the replacement procedure of a similar car part on another vehicle

### Important!

This replacement procedure can be used for:

BMW 3 Coupe (E92) 318i 2.0, BMW 3 Coupe (E92) 325i 2.5, BMW 3 Coupe (E92) 330i 3.0, BMW 3 Coupe (E92) 320i 2.0, BMW 3 Coupe (E92) 325d 3.0, BMW 3 Coupe (E92) 325i 3.0, BMW 3 Coupe (E92) 316i 1.6, BMW 3 Coupe (E92) 328i 3.0

The steps may slightly vary depending on the car design.

This tutorial was created based on the replacement procedure for a similar car part on: BMW 1 Coupe (E82) 125i 3.0

REPLACEMENT: BRAKE PAD WEAR SENSOR – BMW 3 COUPE (E92). LIST OF THE TOOLS YOU'LL NEED:



- Brake cleaner
- Copper grease
- Drive socket # 10
- Wheel impact socket #17
- Ratchet wrench
- Torque wrench
- Crow bar
- Wheel chock

**Buy tools**

Replacement: brake pad wear sensor – BMW 3 Coupe (E92). AUTODOC recommends:

- The replacement procedure is identical for both brake pad wear sensors on the same axle.
- Warning! Shut down the engine before starting any work – BMW 3 Coupe (E92).

**CARRY OUT REPLACEMENT IN THE FOLLOWING ORDER:**

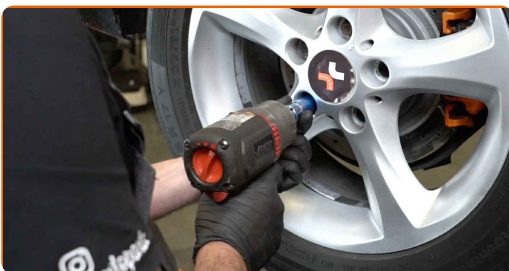
**1** Secure the wheels with chocks.

**2** Loosen the wheel mounting bolts. Use wheel impact socket #17.



**3** Raise the rear of the car and secure on supports.

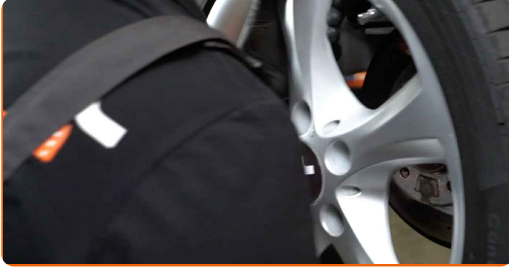
**4** Unscrew the wheel bolts.



Replacement: brake pad wear sensor – BMW 3 Coupe (E92). Tip:

- To avoid injury, hold up the wheel when unscrewing the bolts.

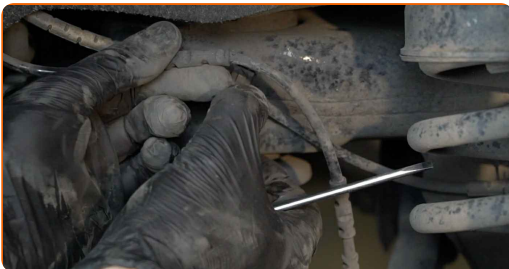
**5** Remove the wheel.



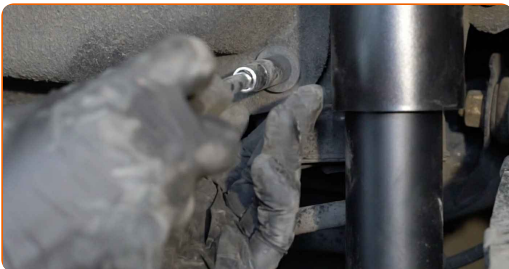
**6** Remove the brake pad wear sensor from the brake pad.



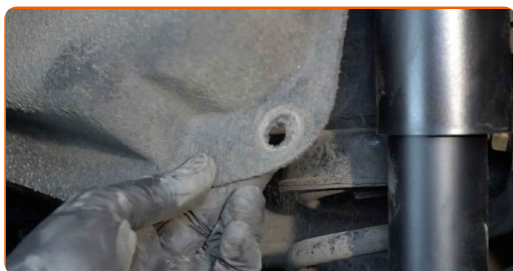
**7** Disconnect the brake pads wear sensor. Use a crowbar.



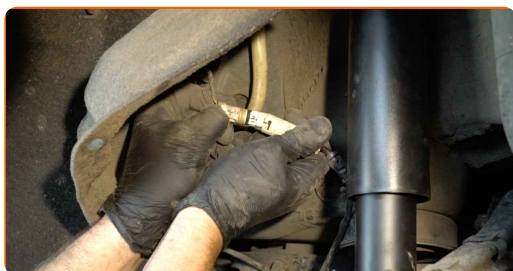
**8** Unscrew the wheel arch cover fasteners. Use a drive socket #10. Use a ratchet wrench.



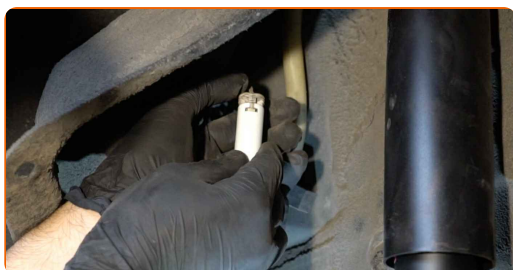
**9** Move the part aside.



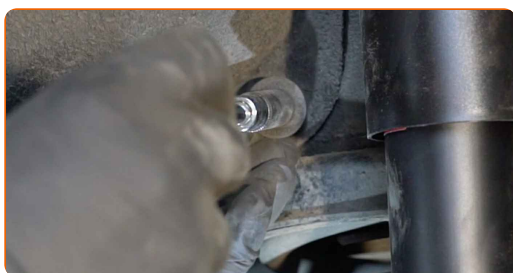
**10** Disconnect the brake pad wear sensor plug.



**11** Connect the brake pad wear sensor plug.



**12** Install the wheel arch cover to its mounting seat. Screw in the fasteners. Use a drive socket #10. Use a ratchet wrench.



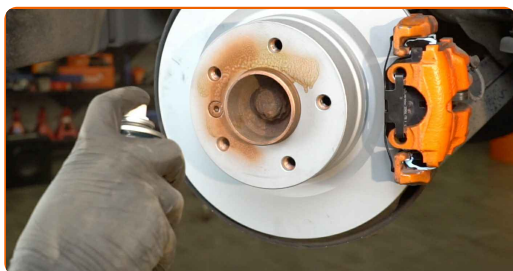
**13** Connect the brake pads wear sensor.



**14** Install the wear sensor on the brake pads.



**15** Treat the surface where the brake disc contacts the wheel rim. Use copper grease.



**16** Clean the brake disk surface. Use a brake cleaner.



Replacement: brake pad wear sensor – BMW 3 Coupe (E92). Tip from AUTODOC:

- After applying the spray, wait a few minutes.

**17** Install the wheel.





**AUTODOC recommends:**

- Warning! To avoid injury, hold the wheel while screwing in the fastening bolts on the car. BMW 3 Coupe (E92)

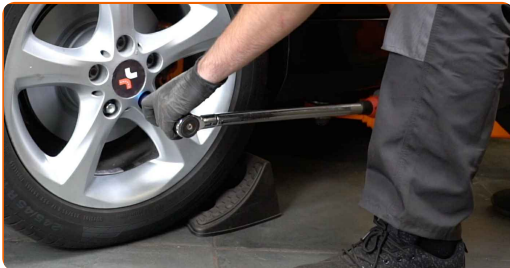
**18**

Screw in the wheel bolts. Use wheel impact socket #17.



**19**

Lower the car and working in a cross order, tighten the wheel bolts. Use wheel impact socket #17. Use a torque wrench. Tighten it to 120 Nm torque.



**20**

Remove the jacks and chocks.



**WELL DONE!** 

**VIEW MORE TUTORIALS**



# AUTODOC – TOP QUALITY AND AFFORDABLE CAR PARTS ONLINE

**AUTODOC MOBILE APP: GREAT DEALS AND CONVENIENT SHOPPING**



**+ AUTODOC**

GET IT ON  
**Google Play**

 Download on the  
**App Store**

**Download**

**A GREAT SELECTION OF SPARE PARTS FOR YOUR CAR**

**BRAKE PAD WEAR SENSOR: A WIDE SELECTION**

## **DISCLAIMER:**

The document contains only general recommendations that may be useful for you when you perform repair or replacement work. AUTODOC shall not be liable for any loss, injury, damage of property occurring in the repair or replacement process due to incorrect use or misinterpretation of the provided information.

AUTODOC shall not be liable for any possible mistakes and uncertainties in this guide. The information provided is for information purposes only and cannot replace advice from specialists.

AUTODOC shall not be liable for incorrect or hazardous usage of equipment, tools and car parts. AUTODOC strongly recommends to be careful and observe the safety rules when performing repair or replacement works. Remember: usage of low quality auto parts does not guarantee you the appropriate level of road safety.

© Copyright 2023 – All the contents of this website, in particular texts, photographs and graphics, are protected by copyright. All rights, including reproduction, publication, editing and translation rights, are reserved by AUTODOC SE.