



How to change fuel filter  
on **BMW 3 Convertible**  
**(E36)** – replacement  
guide

## SIMILAR VIDEO TUTORIAL



This video shows the replacement procedure of a similar car part on another vehicle

### Important!

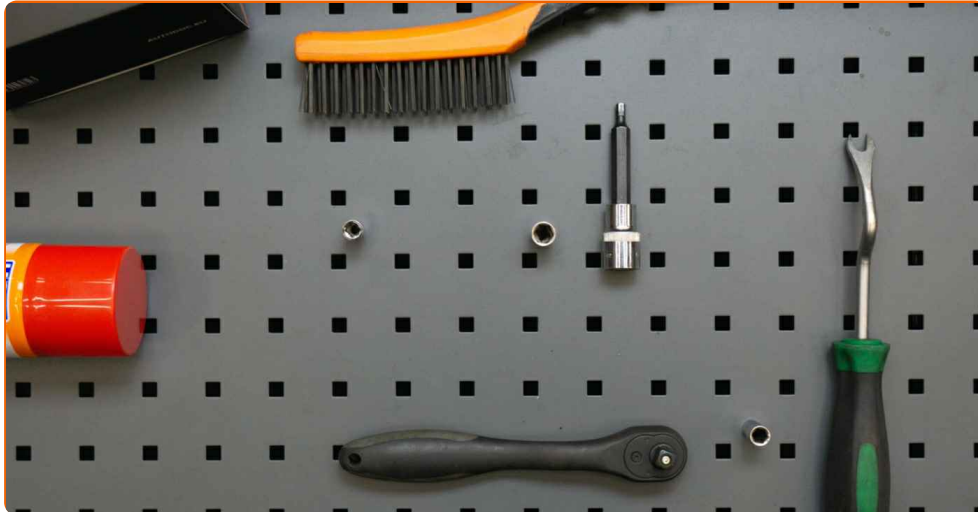
This replacement procedure can be used for:

BMW 3 Convertible (E36) 320i 2.0, BMW 3 Convertible (E36) 318i 1.8, BMW 3 Convertible (E36) M3 3.0, BMW 3 Convertible (E36) 328i 2.8, BMW 3 Convertible (E36) 323i 2.5

The steps may slightly vary depending on the car design.

This tutorial was created based on the replacement procedure for a similar car part on: BMW 5 Saloon (E39) 520i 2.0

REPLACEMENT: FUEL FILTER – BMW 3 CONVERTIBLE (E36). TOOLS YOU MIGHT NEED:



- Wire brush
- All-purpose cleaning spray
- Fluid container
- Drive socket # 5.5
- Drive socket # 8
- Drive socket # 10
- HEX bit No.H5.
- Ratchet wrench
- Clip removal tool
- Fender cover

[Buy tools](#)

Replacement: fuel filter – BMW 3 Convertible (E36). Tip from AUTODOC experts:

- Ensure adequate ventilation of the workplace. Fuel vapors are poisonous.
- Please note: all work on the car – BMW 3 Convertible (E36) – should be done with the engine switched off.

**CARRY OUT REPLACEMENT IN THE FOLLOWING ORDER:**

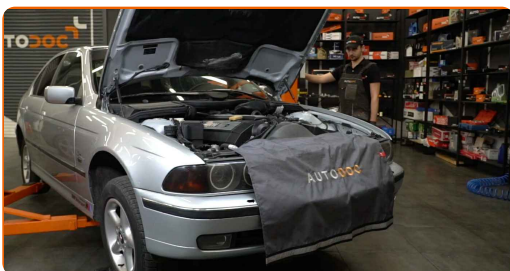
1 Open the fuel door.

2 Unscrew the fuel filler cap.

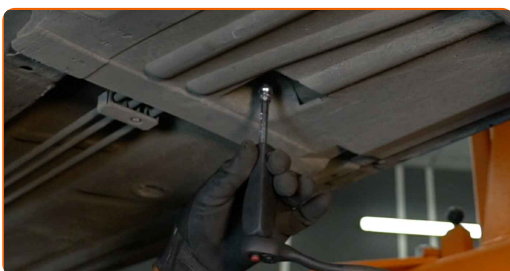
3 Open the bonnet.

4 Use a fender protection cover to prevent damaging paintwork and plastic parts of the car.

5 Lift the car using a jack or place it over an inspection pit.



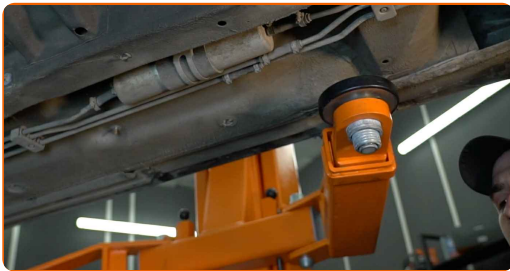
6 Unscrew the fasteners of the underbody cover panel. Use a drive socket #10. Use a drive socket #8. Use a ratchet wrench.



7 Remove the clips of the underbody cover panel. Use a clip removal tool.



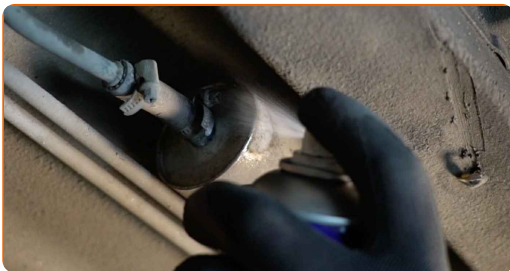
8 Remove the underbody cover panel.



Replacement: fuel filter – BMW 3 Convertible (E36). Tip:

- Do not apply excessive force when removing the part. Otherwise you may damage it.

9 Clean the fasteners of the fuel supply lines. Use a nylon cleaning brush. Use all-purpose cleaning spray.



10 Prepare a container for fluids.



11

Unscrew the fastener attaching the fuel supply line to the fuel filter housing. Use a drive socket #5.5. Use a ratchet wrench.



12

Disconnect the fuel supply lines from the fuel filter.



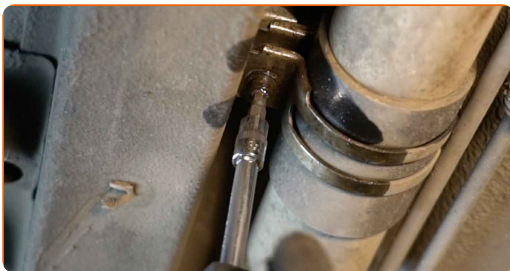
13

Clean the fuel filter mounting bracket. Use WD-40 spray.



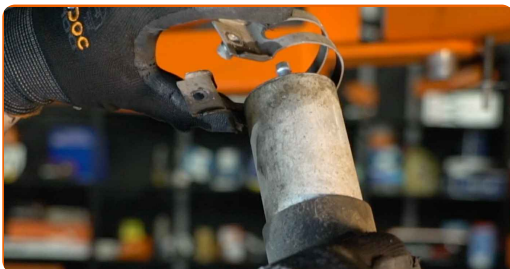
14

Loosen the fuel filter mounting. Use HEX No.H5. Use a ratchet wrench.



15

Remove the fuel filter.



16

Install a new fuel filter.



Replacement: fuel filter – BMW 3 Convertible (E36). Tip from AUTODOC:

- Remember, it is important not to mix up the input and output of the filter. Arrows on the filter indicate the direction of fuel flow.
- During installation, take care to prevent dust and dirt from getting into the fuel filter housing.
- BMW 3 Convertible (E36) – It's important to only use high-quality filters.

17

Connect the fuel supply lines to the fuel filter.



18

Screw in the fuel filter mounting bracket. Use HEX No.H5. Use a ratchet wrench.





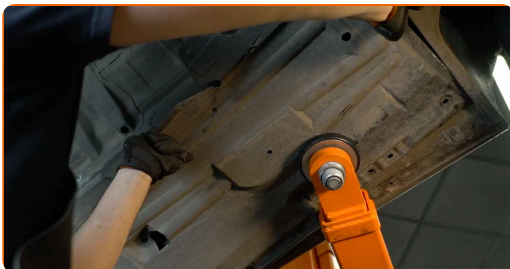
- 19 Screw the fastener attaching the fuel supply line to the fuel filter housing. Use a drive socket #5.5. Use a ratchet wrench.



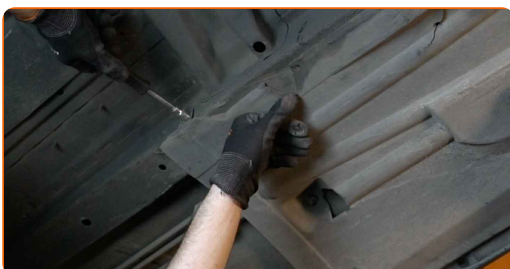
- 20 Take the fluid container away from under the fuel filter.



- 21 Put the underbody cover panel back in place.



- 22 Screw in the fasteners of the underbody cover panel. Use a drive socket #8. Use a drive socket #10. Use a ratchet wrench.





23 Install the clips of the underbody cover panel.



24 Lower the car.



Replacement: fuel filter – BMW 3 Convertible (E36). Professionals recommend:

- Before starting off, switch the ignition on and off several times. This should be done to activate the fuel pump to make it pump fuel through the fuel system.

25 Tighten the fuel filler cap.

26 Close the fuel door.

27 Run the engine for a few minutes. This is necessary in order to make sure that the component operates properly.

28 Shut off the engine.

29 Remove the fender protection cover.

30 Close the hood.

**AUTODOC recommends:**

- To protect the environment from pollution, be sure to dispose of the used filters at special collection points.

**WELL DONE!** [VIEW MORE TUTORIALS](#)

# AUTODOC – TOP QUALITY AND AFFORDABLE CAR PARTS ONLINE

**AUTODOC MOBILE APP: GREAT DEALS AND CONVENIENT SHOPPING**



**AUTODOC**

GET IT ON  
 **Google Play**

Download on the  
 **App Store**

**Download**

**A GREAT SELECTION OF SPARE PARTS FOR YOUR CAR**

**FUEL FILTER: A WIDE SELECTION**

## **DISCLAIMER:**

The document contains only general recommendations that may be useful for you when you perform repair or replacement work. AUTODOC shall not be liable for any loss, injury, damage of property occurring in the repair or replacement process due to incorrect use or misinterpretation of the provided information.

AUTODOC shall not be liable for any possible mistakes and uncertainties in this guide. The information provided is for information purposes only and cannot replace advice from specialists.

AUTODOC shall not be liable for incorrect or hazardous usage of equipment, tools and car parts. AUTODOC strongly recommends to be careful and observe the safety rules when performing repair or replacement works. Remember: usage of low quality auto parts does not guarantee you the appropriate level of road safety.

© Copyright 2021 – All the contents of this website, in particular texts, photographs and graphics, are protected by copyright. All rights, including reproduction, publication, editing and translation rights, are reserved by AUTODOC GmbH.