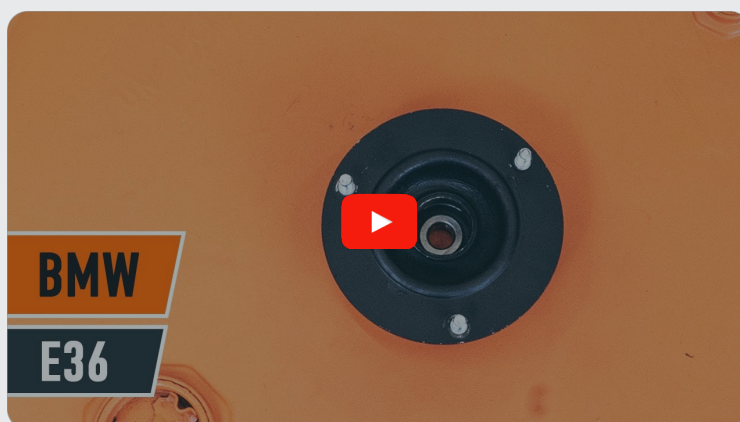




How to change front
strut mount on **BMW 3
Compact (E36)** –
replacement guide

SIMILAR VIDEO TUTORIAL



This video shows the replacement procedure of a similar car part on another vehicle

Important!

This replacement procedure can be used for:

BMW 3 Compact (E36) 316i 1.6, BMW 3 Compact (E36) 318tds 1.7, BMW 3 Compact (E36) 318ti 1.8, BMW 3 Compact (E36) 318ti 1.9, BMW 3 Compact (E36) 323ti 2.5, BMW 3 Compact (E36) 316g 1.6, BMW 3 Compact (E36) 316i 1.9

The steps may slightly vary depending on the car design.

This tutorial was created based on the replacement procedure for a similar car part on: BMW 3 Saloon (E36) 323i 2.5

REPLACEMENT: STRUT MOUNT – BMW 3 COMPACT (E36). TOOLS YOU MIGHT NEED:



- Wire brush
- WD-40 spray
- Brake cleaner
- Copper grease
- Torque wrench
- Combination spanner #18
- Drive socket # 9
- Drive socket # 13
- Drive socket # 18
- Drive socket # 19
- Drive socket # 22
- Wheel impact socket #17
- Ratchet wrench
- Crow bar
- Hydraulic strut spring compressor
- Hydraulic transmission jack
- Fender cover
- Wheel chock

Buy tools

Replacement: strut mount – BMW 3 Compact (E36). Tip from AUTODOC:

- The replacement procedure is identical for the mounts of the left and right shock struts of the front suspension.
- All mounts of the front shock struts should be replaced simultaneously.
- All work should be done with the engine stopped.

CARRY OUT REPLACEMENT IN THE FOLLOWING ORDER:

1 Open the bonnet.

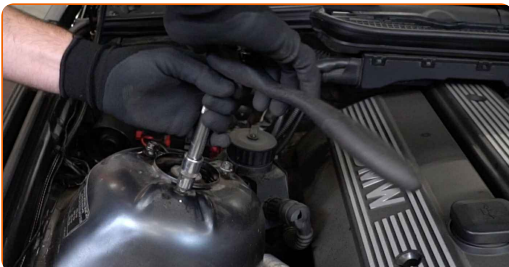
2 Use a fender protection cover to prevent damaging paintwork and plastic parts of the car.

3 Secure the wheels with chocks.

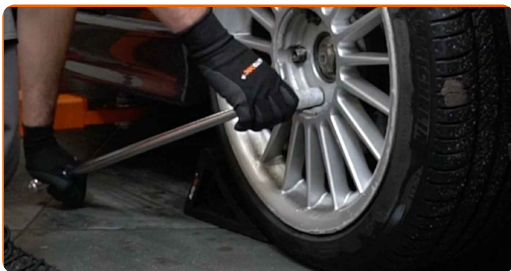
4 Clean the fasteners of the shock strut upper mount. Use a wire brush. Use WD-40 spray.



5 Loosen the upper fasteners of the suspension strut. Use a drive socket #13. Use a ratchet wrench.

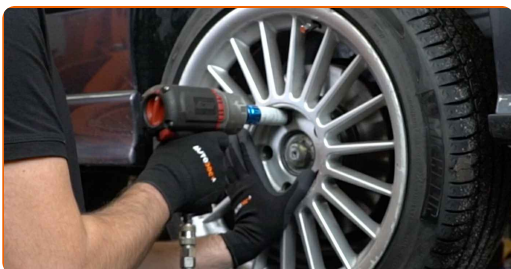


6 Loosen the wheel mounting bolts. Use wheel impact socket #17.



7 Raise the front of the car and secure on supports.

8 Unscrew the wheel bolts.



AUTODOC recommends:

- Warning! To avoid injury, hold the wheel while unscrewing the fastening bolts.
BMW 3 Compact (E36)

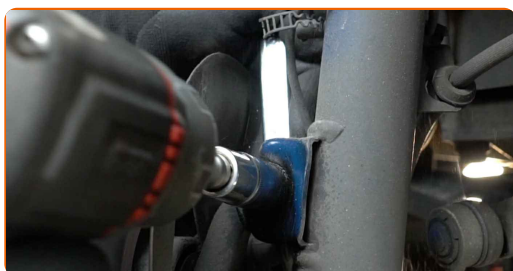
9 Remove the wheel.



10 Clean the fasteners connecting the shock strut to the steering knuckle. Use a wire brush. Use WD-40 spray.



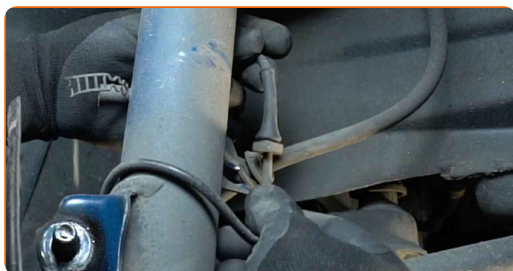
11 Unscrew the fasteners connecting the suspension strut to the steering knuckle. Use a combination spanner #18. Use a drive socket #18. Use a ratchet wrench.



12 Detach the brake hose from the shock strut.

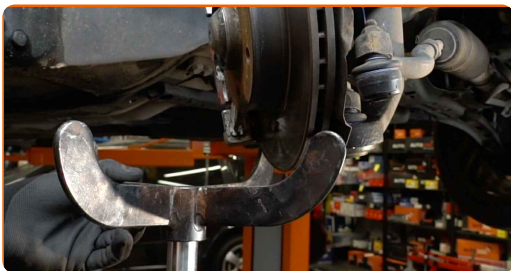


13 Disconnect the ABS sensor wiring.



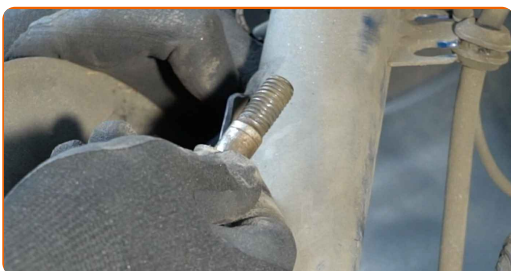
14

Prop up the steering knuckle. Use a hydraulic transmission jack.



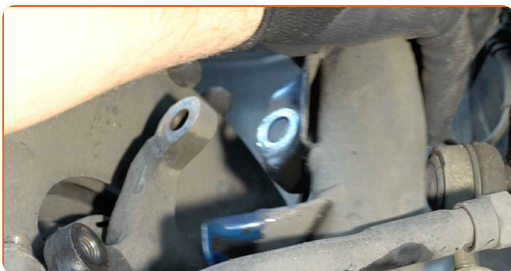
15

Remove the fastening bolts.



16

Disconnect the steering knuckle from the shock absorber strut.



17

Unscrew the upper fasteners of the shock strut.

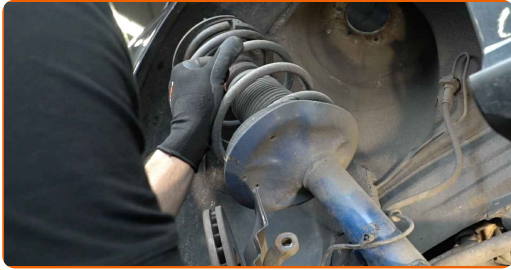


AUTODOC recommends:

- BMW 3 Compact (E36) – To avoid injury, hold the suspension strut while unscrewing the fastening bolts.

18

Remove the suspension strut.



19

Set the shock absorber strut on the spring compressor tool.



Replacement: strut mount – BMW 3 Compact (E36). Professionals recommend:

- Note that when using a spring compressor, spring coils need to be securely gripped, compressing the spring on the opposite sides.
- Ensure the correct position of the spring in the retainer.
- Make sure that the spring coils tightly entered the lock handles.

20

Compress the spring.



21 Remove the shock strut mount cap. Use a crowbar.



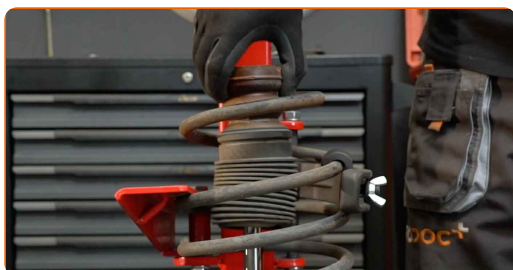
22 Treat the shock strut rod. Use a wire brush. Use WD-40 spray.



23 Remove the strut piston rod nut. Use a drive socket #9. Use a drive socket #22. Use a ratchet wrench.



24 Remove the shock absorber mount, boot and bump stop.



Replacement: strut mount – BMW 3 Compact (E36). AUTODOC experts recommend:

- Examine the shock absorber dust cap and the bump stop. Replace them if necessary.

25 Install the boot and a bump stop onto the shock absorber.



26 Install a new top shock strut mount.



27 Tighten the shock strut piston rod nut. Use a drive socket #19. Use a drive socket #9. Use a torque wrench. Tighten it to 52 Nm torque.



Replacement: strut mount – BMW 3 Compact (E36). Tip from AUTODOC experts:

- Check to make sure the spring is positioned correctly. Avoid its misalignment.

28 Treat the shock strut rod. Use copper grease.



29 Install the shock strut mount cap.



30 Decompress the spring.



31 Remove the assembled shock strut.



32 Treat the shock strut mounting seat on the steering knuckle. Use a wire brush. Use WD-40 spray.



33 Install the shock strut into the wheel arch.



34 Secure the upper fasteners of the shock strut. Do not tighten it.

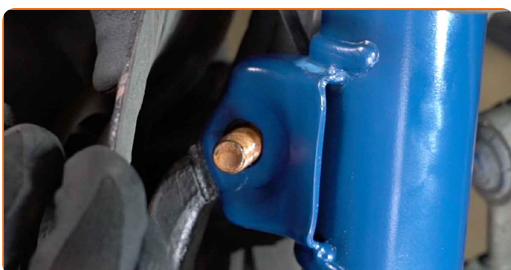
AUTODOC recommends:

- BMW 3 Compact (E36) – To avoid injury, hold the suspension strut while screwing in the fastening bolts.

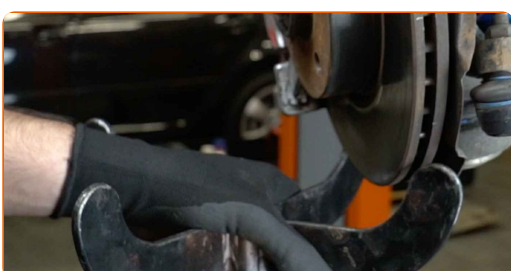
35 Fix the shock absorber strut on the steering knuckle.



36 Install the fastening bolts.



37 Remove the support from under the steering knuckle.

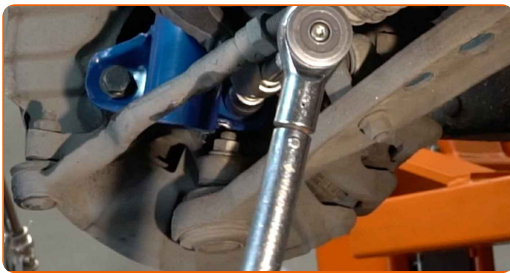


AUTODOC recommends:

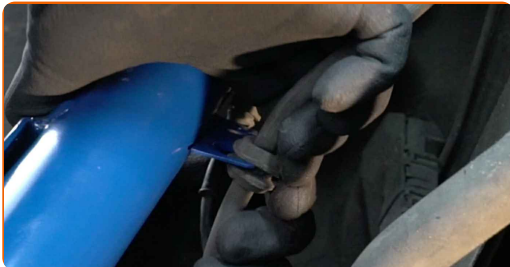
- Replacement: strut mount – BMW 3 Compact (E36). Lower the transmission jack smoothly, without jerks, to avoid damaging components and mechanisms.

38 Screw in the fasteners connecting the suspension strut to the steering knuckle. Use a combination spanner #18. Use a drive socket #18. Use a ratchet wrench.

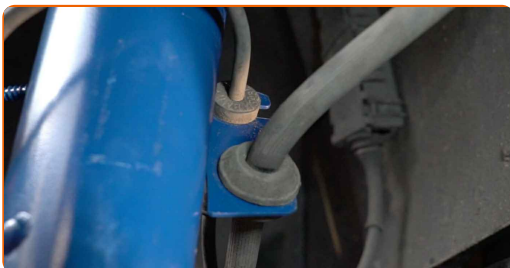
39 Tighten the lower fasteners connecting the shock strut to the steering knuckle. Use a combination spanner #18. Use a drive socket #18. Use a torque wrench. Tighten it to 107 Nm torque.



40 Attach the brake hose.



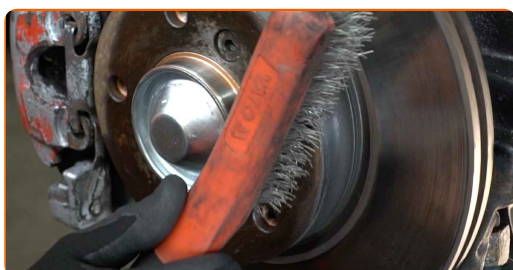
41 Connect the ABS sensor wiring.



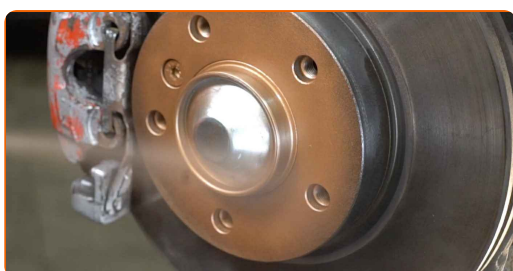
42 Treat the shock strut fasteners. Use copper grease.



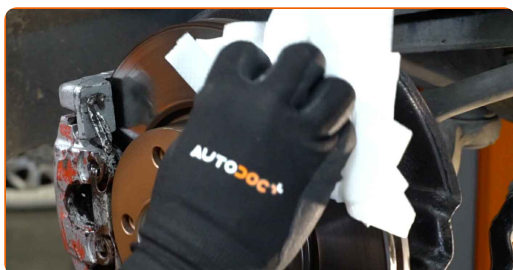
43 Clean the wheel rim mounting seat. Use a wire brush.



44 Treat the surface where the brake disc contacts the wheel rim. Use copper grease.



45 Clean the brake disk surface. Use a brake cleaner.



AUTODOC recommends:

- Replacement: strut mount – BMW 3 Compact (E36). After applying the spray, wait a few minutes.

46 Install the wheel.



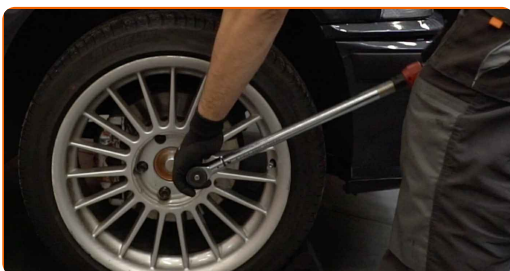
AUTODOC recommends:

- Warning! To avoid injury, hold the wheel while screwing in the fastening bolts on the car. BMW 3 Compact (E36)

47 Screw in the wheel bolts. Use wheel impact socket #17.



48 Lower the car and working in a cross order, tighten the wheel bolts. Use wheel impact socket #17. Use a torque wrench. Tighten it to 120 Nm torque.



49

Remove the jacks and chocks.



50

Tighten the upper fasteners of the shock strut. Use a drive socket #13. Use a torque wrench. Tighten it to 32 Nm torque.



51

Treat the shock strut fasteners. Use copper grease.



52

Remove the fender protection cover.

53

Close the hood.

WELL DONE! 

VIEW MORE TUTORIALS

AUTODOC – TOP QUALITY AND AFFORDABLE CAR PARTS ONLINE

AUTODOC MOBILE APP: GREAT DEALS AND CONVENIENT SHOPPING



+ AUTODOC

GET IT ON
Google Play

Download on the
App Store

Download

A GREAT SELECTION OF SPARE PARTS FOR YOUR CAR

STRUT MOUNT: A WIDE SELECTION

DISCLAIMER:

The document contains only general recommendations that may be useful for you when you perform repair or replacement work. AUTODOC shall not be liable for any loss, injury, damage of property occurring in the repair or replacement process due to incorrect use or misinterpretation of the provided information.

AUTODOC shall not be liable for any possible mistakes and uncertainties in this guide. The information provided is for information purposes only and cannot replace advice from specialists.

AUTODOC shall not be liable for incorrect or hazardous usage of equipment, tools and car parts. AUTODOC strongly recommends to be careful and observe the safety rules when performing repair or replacement works. Remember: usage of low quality auto parts does not guarantee you the appropriate level of road safety.

© Copyright 2022 – All the contents of this website, in particular texts, photographs and graphics, are protected by copyright. All rights, including reproduction, publication, editing and translation rights, are reserved by AUTODOC GmbH.