



How to change glass for
wing mirror on **BMW 1
Hatchback (E87)** –
replacement guide

SIMILAR VIDEO TUTORIAL



This video shows the replacement procedure of a similar car part on another vehicle

Important!

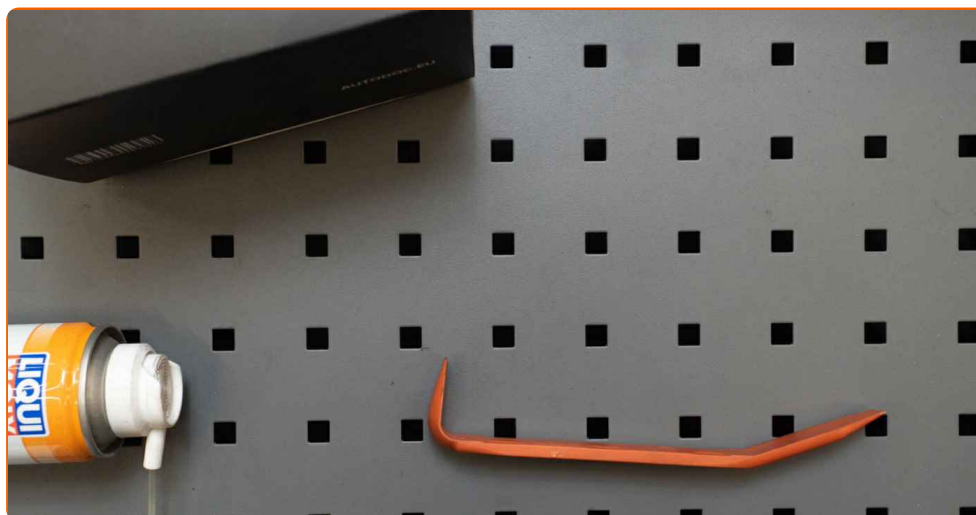
This replacement procedure can be used for:

BMW 1 Hatchback (E87) 116i 1.6, BMW 1 Hatchback (E87) 116i 2.0, BMW 1 Hatchback (E87) 118i 2.0, BMW 1 Hatchback (E87) 120i 2.0, BMW 1 Hatchback (E87) 130i 3.0, BMW 1 Hatchback (E87) 116d 2.0, BMW 1 Hatchback (E87) 118d 2.0, BMW 1 Hatchback (E87) 120d 2.0, BMW 1 Hatchback (E87) 123d 2.0

The steps may slightly vary depending on the car design.

This tutorial was created based on the replacement procedure for a similar car part on: BMW 1 Coupe (E82) 125i 3.0

REPLACEMENT: GLASS FOR WING MIRROR – BMW 1 HATCHBACK (E87). LIST OF THE TOOLS YOU'LL NEED:



- Plastic trim tool

- Fender cover

[Buy tools](#)

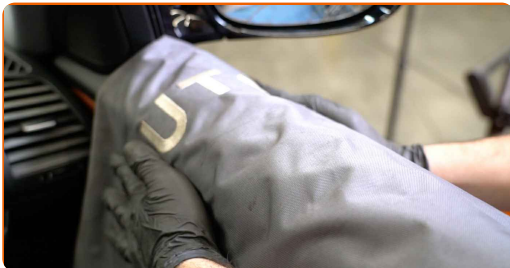
Replacement: glass for wing mirror – BMW 1 Hatchback (E87). Professionals recommend:

- The replacement procedure is identical for the right and left side mirror glass.
- All work should be done with the engine stopped.

REPLACEMENT: GLASS FOR WING MIRROR – BMW 1 HATCHBACK (E87). RECOMMENDED SEQUENCE OF STEPS:

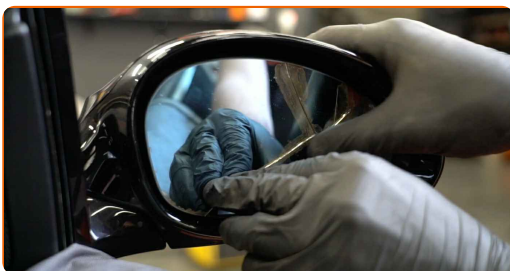
1

Use a fender protection cover to prevent damaging paintwork and plastic parts of the car.



2

Tilt the mirror glass out of the housing.



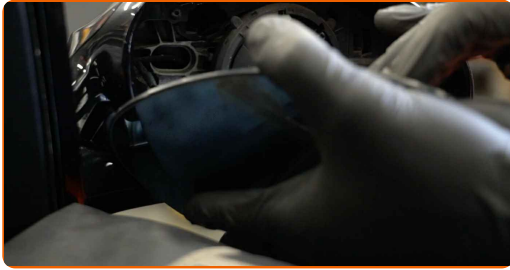
3

Carefully release the mirror glass from its attachment. Use a plastic trim tool.



4

Remove the mirror glass.

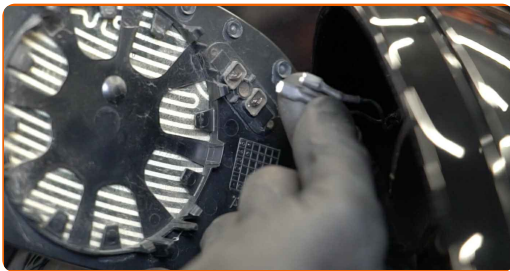


AUTODOC recommends:

- Replacement: glass for wing mirror – BMW 1 Hatchback (E87). Do not use excessive force when removing the part as this may damage it.

5

Detach the mirror heating connectors.



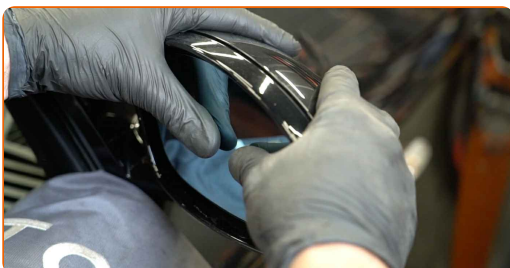
6

Attach the mirror heating connectors.



7

Install the new mirror glass. Make sure you hear a click indicating that it is locked in place.

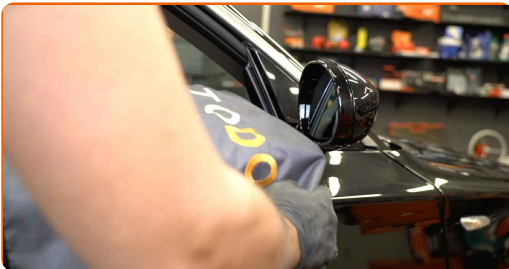


Replacement: glass for wing mirror – BMW 1 Hatchback (E87). AUTODOC recommends:

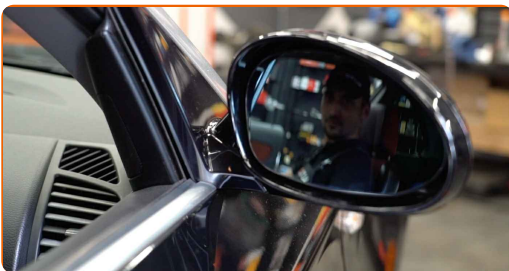
- Do not apply excessive force when installing the part. Otherwise you may damage the fasteners.
- Make sure the mirror glass is positioned correctly. It should be aligned with the locking tabs on the housing.

8 Clean the mirror glass.

9 Remove the fender protection cover.



10 Switch on the ignition. This is necessary in order to make sure that the component operates properly.



11 Switch off the ignition.

WELL DONE! 

[VIEW MORE TUTORIALS](#)

AUTODOC – TOP QUALITY AND AFFORDABLE CAR PARTS ONLINE

AUTODOC MOBILE APP: GREAT DEALS AND CONVENIENT SHOPPING

GET IT ON
Google Play

Download on the
App Store

Download

A GREAT SELECTION OF SPARE PARTS FOR YOUR CAR

GLASS FOR WING MIRROR: A WIDE SELECTION

(i) DISCLAIMER:

The document contains only general recommendations that may be useful for you when you perform repair or replacement work. AUTODOC shall not be liable for any loss, injury, damage of property occurring in the repair or replacement process due to incorrect use or misinterpretation of the provided information.

AUTODOC shall not be liable for any possible mistakes and uncertainties in this guide. The information provided is for information purposes only and cannot replace advice from specialists.

AUTODOC shall not be liable for incorrect or hazardous usage of equipment, tools and car parts. AUTODOC strongly recommends to be careful and observe the safety rules when performing repair or replacement works. Remember: usage of low quality auto parts does not guarantee you the appropriate level of road safety.

© Copyright 2022 – All the contents of this website, in particular texts, photographs and graphics, are protected by copyright. All rights, including reproduction, publication, editing and translation rights, are reserved by AUTODOC GmbH.