



How to change front
brake pad wear sensor on
BMW 1 Hatchback (E81)
– replacement guide

SIMILAR VIDEO TUTORIAL



This video shows the replacement procedure of a similar car part on another vehicle

Important!

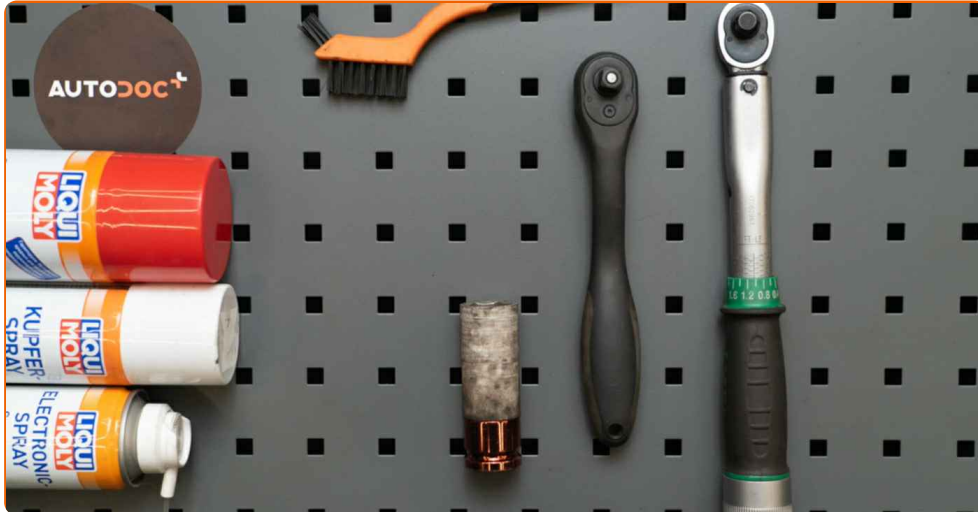
This replacement procedure can be used for:

BMW 1 Hatchback (E81) 116i 1.6, BMW 1 Hatchback (E81) 120d 2.0, BMW 1 Hatchback (E81) 130i 3.0, BMW 1 Hatchback (E81) 118i 2.0, BMW 1 Hatchback (E81) 120i 2.0, BMW 1 Hatchback (E81) 118d 2.0, BMW 1 Hatchback (E81) 123d 2.0, BMW 1 Hatchback (E81) 116i 2.0, BMW 1 Hatchback (E81) 116d 2.0

The steps may slightly vary depending on the car design.

This tutorial was created based on the replacement procedure for a similar car part on: BMW 1 Coupe (E82) 125i 3.0

REPLACEMENT: BRAKE PAD WEAR SENSOR – BMW 1 HATCHBACK (E81). TOOLS YOU'LL NEED:



- Nylon cleaning brush
- Electronic spray
- Brake cleaner
- Copper grease
- Wheel impact socket #17
- Torque wrench
- Wheel chock

Buy tools

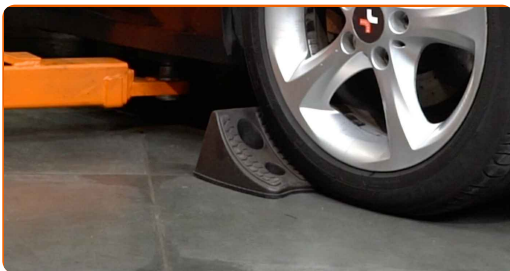
Replacement: brake pad wear sensor – BMW 1 Hatchback (E81). AUTODOC recommends:

- The replacement procedure is identical for both brake pad wear sensors on the same axle.
- All work should be done with the engine stopped.

REPLACEMENT: BRAKE PAD WEAR SENSOR – BMW 1 HATCHBACK (E81). RECOMMENDED SEQUENCE OF STEPS:

1

Secure the wheels with chocks.



2

Loosen the wheel mounting bolts. Use wheel impact socket #17.



3

Raise the front of the car and secure on supports.

4 Unscrew the wheel bolts.



Replacement: brake pad wear sensor – BMW 1 Hatchback (E81). AUTODOC experts recommend:

- To avoid injury, hold up the wheel when unscrewing the bolts.

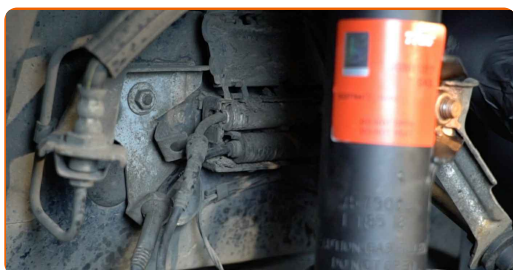
5 Remove the wheel.



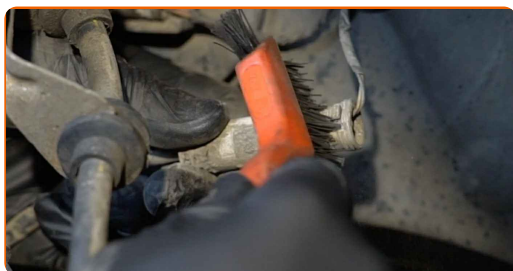
6 Remove the brake pad wear sensor from the brake pad.



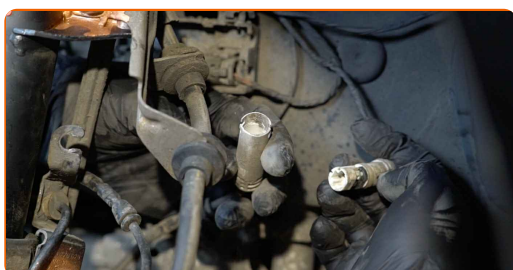
7 Disconnect the brake pads wear sensor.



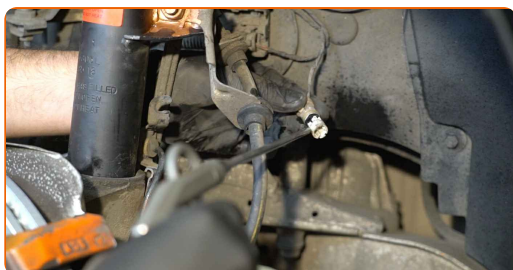
8 Clean the brake pad wear sensor plug. Use a nylon cleaning brush.



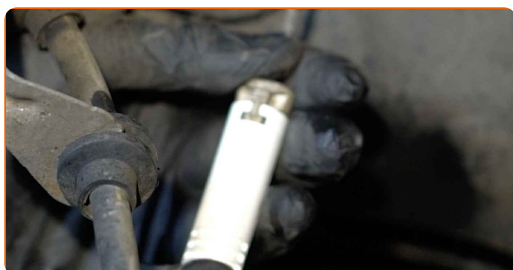
9 Disconnect the brake pad wear sensor plug.



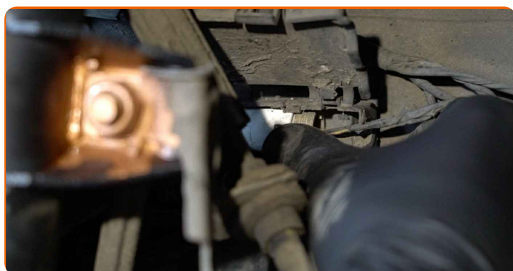
10 Treat the brake pad wear sensor plug. Use dielectric grease.



11 Connect the brake pad wear sensor plug.



12 Connect the brake pads wear sensor.



13 Install the wear sensor on the brake pads.



14 Treat the surface where the brake disc contacts the wheel rim. Use copper grease.



15 Clean the brake disk surface. Use a brake cleaner.



AUTODOC recommends:

- Replacement: brake pad wear sensor – BMW 1 Hatchback (E81). After applying the spray, wait a few minutes.

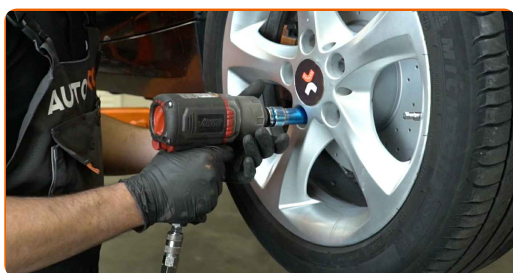
16 Install the wheel.



Replacement: brake pad wear sensor – BMW 1 Hatchback (E81). Tip:

- To avoid injury, hold up the wheel when screwing in the fastening bolts.

17 Screw in the wheel bolts. Use wheel impact socket #17.



18 Lower the car and working in a cross order, tighten the wheel bolts. Use wheel impact socket #17. Use a torque wrench. Tighten it to 120 Nm torque.



19

Remove the jacks and chocks.



WELL DONE! 

VIEW MORE TUTORIALS

AUTODOC – TOP QUALITY AND AFFORDABLE CAR PARTS ONLINE

AUTODOC MOBILE APP: GREAT DEALS AND CONVENIENT SHOPPING



+ AUTODOC

GET IT ON
Google Play

 Download on the
App Store

Download

A GREAT SELECTION OF SPARE PARTS FOR YOUR CAR

BRAKE PAD WEAR SENSOR: A WIDE SELECTION

DISCLAIMER:

The document contains only general recommendations that may be useful for you when you perform repair or replacement work. AUTODOC shall not be liable for any loss, injury, damage of property occurring in the repair or replacement process due to incorrect use or misinterpretation of the provided information.

AUTODOC shall not be liable for any possible mistakes and uncertainties in this guide. The information provided is for information purposes only and cannot replace advice from specialists.

AUTODOC shall not be liable for incorrect or hazardous usage of equipment, tools and car parts. AUTODOC strongly recommends to be careful and observe the safety rules when performing repair or replacement works. Remember: usage of low quality auto parts does not guarantee you the appropriate level of road safety.

© Copyright 2022 – All the contents of this website, in particular texts, photographs and graphics, are protected by copyright. All rights, including reproduction, publication, editing and translation rights, are reserved by AUTODOC GmbH.