



How to change rear strut  
mount on **BMW E82** –  
replacement guide

## VIDEO TUTORIAL

** Important!**

This replacement procedure can be used for:

BMW 3 Touring (E91) 325i 3.0, BMW 3 Touring (E91) 318i 2.0, BMW 3 Touring (E91) 316d 2.0, BMW 1 Coupe (E82) 118d 2.0, BMW 3 Coupe (E92) 318i 2.0, BMW 3 Convertible (E93) 318i 2.0, BMW 3 Convertible (E93) 325d 3.0, BMW 1 Hatchback (E81) 116i 1.6, BMW 1 Hatchback (E81) 120d 2.0, BMW 3 Saloon (E90) 320i 2.0, BMW 3 Saloon (E90) 325i 2.5, BMW 3 Saloon (E90) 330i 3.0, BMW 3 Saloon (E90) 320d 2.0, BMW 1 Hatchback (E81) 130i 3.0, BMW 3 Touring (E91) 320i 2.0, (+ 85)

The steps may slightly vary depending on the car design.

REPLACEMENT: STRUT MOUNT – BMW E82. LIST OF THE TOOLS YOU'LL NEED:



- Wire brush
- WD-40 spray
- Brake cleaner
- Copper grease
- Drive socket # 14
- Drive socket # 16
- Torx bit T40
- Wheel impact socket #17
- Ratchet wrench
- Torque wrench
- Shock absorber socket #DD6
- Phillips screwdriver
- Clip removal tool
- Hydraulic transmission jack
- Wheel chock

**BUY TOOLS**

Replacement: strut mount – BMW E82. AUTODOC experts recommend:

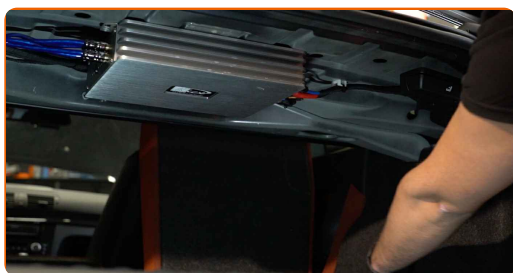
- The replacement procedure is identical for the mounts of the right and left shock absorbers of the rear suspension.
- Both mounts of the rear shock struts should be replaced simultaneously.
- Be sure to replace all self-locking nuts and bolts during installation.
- All work should be done with the engine stopped.

## REPLACEMENT: STRUT MOUNT – BMW E82. USE THE FOLLOWING PROCEDURE:

1 Open the boot lid.



2 Fold down the backrests of the rear seats.



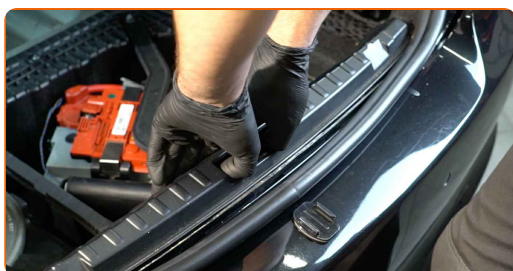
**3** Raise the lower lining of the boot.



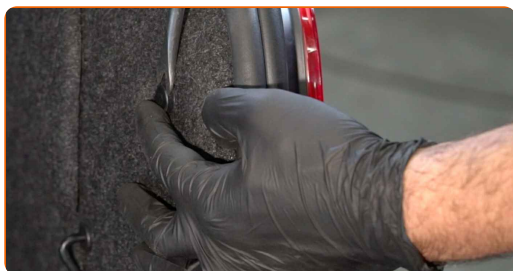
**4** Unscrew the fastener of the central protective plastic panel. Use a Phillips screwdriver. Use a clip removal tool. Use Torx T40. Use a ratchet wrench.



**5** Remove the central protective plastic panel.



**6** Unscrew the fastener of the boot side lining. Use a clip removal tool. Use Torx T40. Use a ratchet wrench.



**7** Detach the boot side lining.



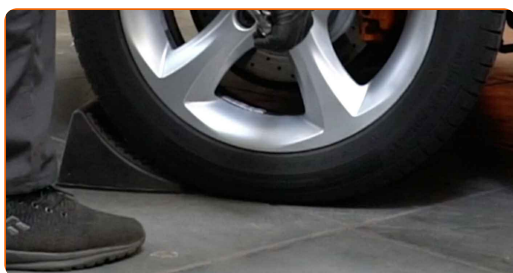
**8** Remove the mount cap from the shock absorber upper fastener.



**9** Loosen the upper fastener of the shock absorber. Use a shock absorber socket DDN<sup>®</sup>6. Use a drive socket #16. Use a ratchet wrench.



**10** Secure the wheels with chocks.



**11** Loosen the wheel mounting bolts. Use wheel impact socket #17.



**12** Raise the rear of the car and secure on supports.



**13** Unscrew the wheel bolts.



**Replacement: strut mount – BMW E82. Tip:**

- To avoid injury, hold up the wheel when unscrewing the bolts.

**14** Remove the wheel.

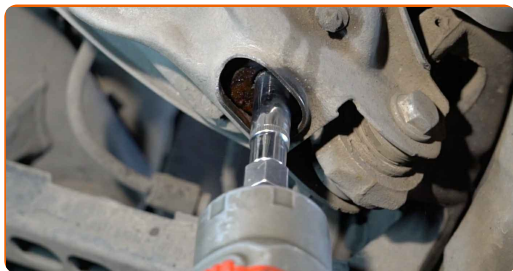


**15** Clean the shock absorber fasteners. Use a wire brush. Use WD-40 spray.



16

Unscrew the lower fastener of the shock absorber. Use a drive socket #14. Use a ratchet wrench.



17

Unscrew the upper fastener of the shock absorber.

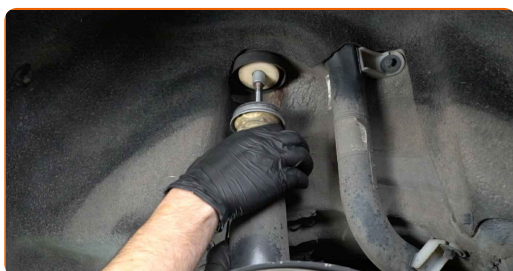


**AUTODOC recommends:**

- Important! Hold the shock absorber while unscrewing the fastening bolts. BMW E82

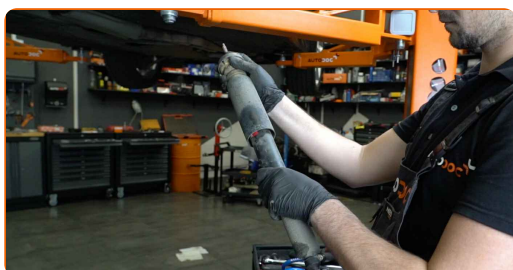
18

Remove the shock absorber.



19

Remove the shock absorber mount, boot and bump stop.



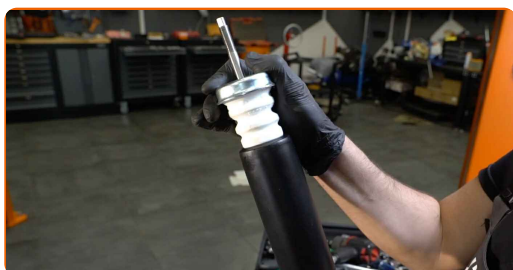


Replacement: strut mount – BMW E82. AUTODOC experts recommend:

- Examine the shock absorber dust cap and the bump stop. Replace them if necessary.

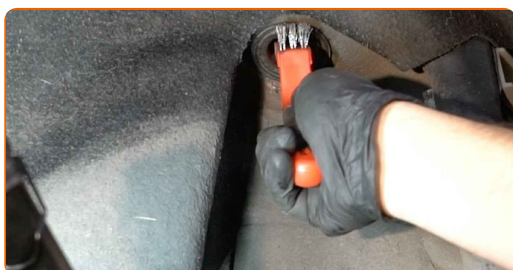
20

Install the new mount, boot, and bump stop on the shock absorber.



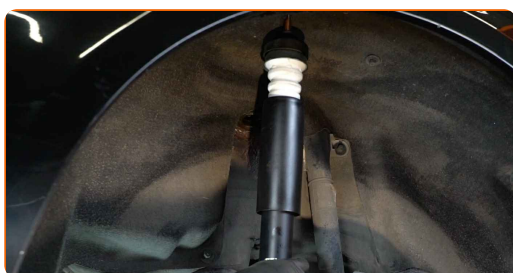
21

Clean the shock absorber mounting seats. Use a wire brush. Use WD-40 spray.



22

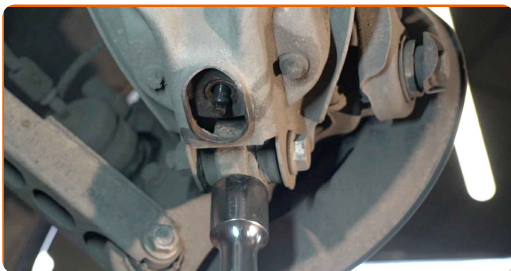
Place the shock absorber in the wheel arch and secure it.



AUTODOC recommends:

- BMW E82 – To avoid injury, hold the shock absorber while screwing in the fastening bolts.

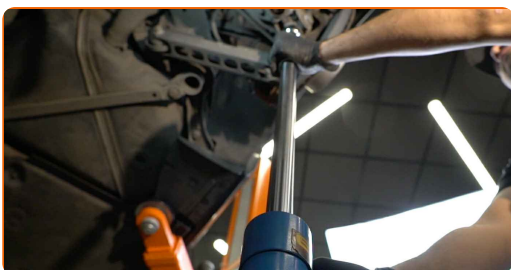
**23** Support the stub axle. Use a hydraulic transmission jack.



**24** Screw in the lower fastener of the shock absorber. Use a drive socket #14. Use a ratchet wrench.



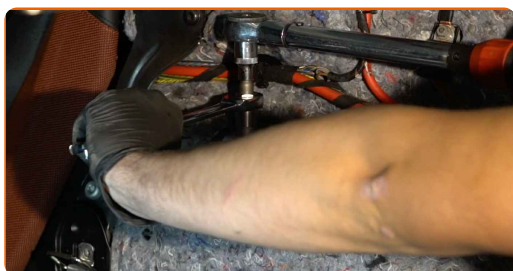
**25** Remove the support from under the stub axle.



**AUTODOC recommends:**

- Replacement: strut mount – BMW E82. Lower the transmission jack smoothly, without jerks, to avoid damaging components and mechanisms.

- 26 Tighten the top shock absorber fastening. Use a shock absorber socket DDN<sup>®</sup>6. Use a drive socket #16. Use a torque wrench. Tighten it to 27 Nm torque.



- 27 Treat the shock absorber fasteners. Use copper grease.



- 28 Install the mount cap on the shock absorber upper fastener.



- 29 Tighten the lower fastener of the shock absorber. Use a drive socket #14. Use a torque wrench. Tighten it to 60 Nm torque.

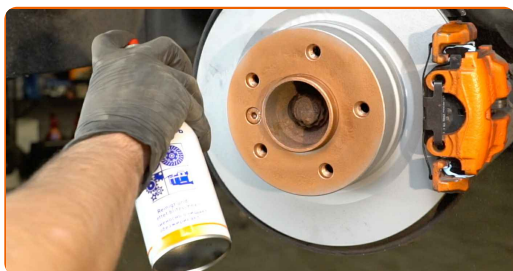


- 30 Treat the shock absorber fasteners. Treat all joints of the arm. Use copper grease.

**31** Treat the surface where the brake disc contacts the wheel rim. Use copper grease.



**32** Clean the brake disk surface. Use a brake cleaner.



**Replacement: strut mount – BMW E82. Tip from AUTODOC:**

- After applying the spray, wait a few minutes.

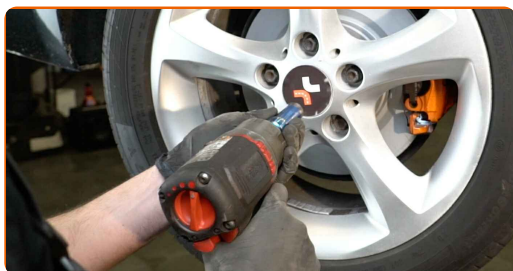
**33** Install the wheel.



**Replacement: strut mount – BMW E82. Tip from AUTODOC experts:**

- To avoid injury, hold up the wheel when screwing in the fastening bolts.

**34** Screw in the wheel bolts. Use wheel impact socket #17.



**35** Lower the car and working in a cross order, tighten the wheel bolts. Use wheel impact socket #17. Use a torque wrench. Tighten it to 120 Nm torque.



**36** Remove the jacks and chocks.



**37** Attach the side lining of the boot.



**38** Screw in the fastener of the boot side lining. Use Torx T40. Use a ratchet wrench.



**39** Install the central protective plastic panel.



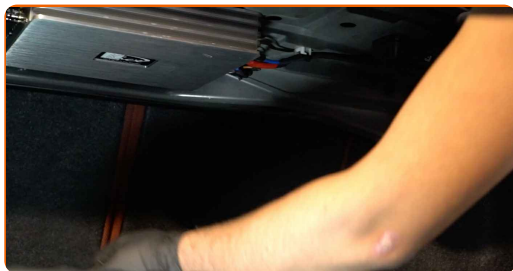
**40** Screw in the fastener of the central protective plastic panel. Use a Phillips screwdriver. Use Torx T40. Use a ratchet wrench.



**41** Put down the lower lining of the boot.



**42** Return the seat to its original position.



43

Close the lid of the luggage compartment.



**WELL DONE!** 

**VIEW MORE TUTORIALS**

# AUTODOC – TOP QUALITY AND AFFORDABLE CAR PARTS ONLINE

**AUTODOC MOBILE APP: GREAT DEALS AND CONVENIENT SHOPPING**



**+ AUTODOC**

GET IT ON  **Google Play**

 **Download on the App Store**

**Download**

**A GREAT SELECTION OF SPARE PARTS FOR YOUR CAR**

**BUY SPARE PARTS FOR BMW**

**STRUT MOUNT: A WIDE SELECTION**



**CHOOSE CAR PARTS FOR BMW E82**

**STRUT MOUNT FOR BMW: BUY NOW**

**STRUT MOUNT FOR BMW E82: THE BEST DEALS & OFFERS**

### **DISCLAIMER:**

The document contains only general recommendations that may be useful for you when you perform repair or replacement work. AUTODOC shall not be liable for any loss, injury, damage of property occurring in the repair or replacement process due to incorrect use or misinterpretation of the provided information.

AUTODOC shall not be liable for any possible mistakes and uncertainties in this guide. The information provided is for information purposes only and cannot replace advice from specialists.

AUTODOC shall not be liable for incorrect or hazardous usage of equipment, tools and car parts. AUTODOC strongly recommends to be careful and observe the safety rules when performing repair or replacement works. Remember: usage of low quality auto parts does not guarantee you the appropriate level of road safety.

© Copyright 2023 – All the contents of this website, in particular texts, photographs and graphics, are protected by copyright. All rights, including reproduction, publication, editing and translation rights, are reserved by AUTODOC SE.