



How to change front
lower arm on **BMW E82** –
replacement guide

VIDEO TUTORIAL

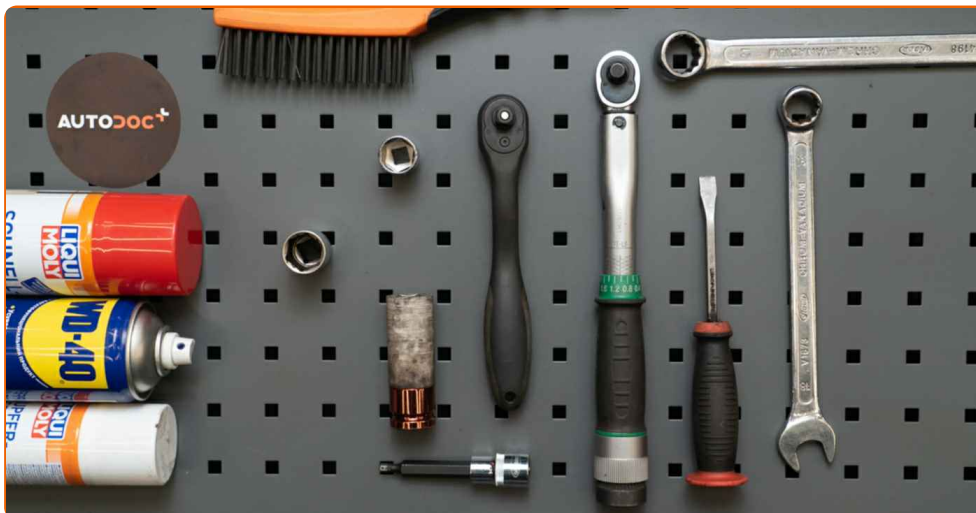
** Important!**

This replacement procedure can be used for:

BMW 3 Touring (E91) 325i 3.0, BMW 3 Touring (E91) 318d 2.0, BMW 3 Saloon (E90) 318d 2.0, BMW 3 Touring (E91) 318i 2.0, BMW 3 Touring (E91) 316d 2.0, BMW 3 Saloon (E90) 320d xDrive 2.0, BMW Z4 Roadster (E89) sDrive 20 i, BMW Z4 Roadster (E89) sDrive 28 i, BMW X1 (E84) sDrive 20 i, BMW 1 Coupe (E82) 118d 2.0, BMW 3 Coupe (E92) 318i 2.0, BMW 3 Convertible (E93) 318i 2.0, BMW 3 Convertible (E93) 325d 3.0, BMW 1 Hatchback (E81) 116i 1.6, BMW 1 Hatchback (E81) 120d 2.0, (+ 103)

The steps may slightly vary depending on the car design.

REPLACEMENT: FRONT LOWER ARM – BMW E82. LIST OF THE TOOLS YOU'LL NEED:



- Wire brush
- WD-40 spray
- Brake cleaner
- Copper grease
- Combination spanner #18
- Combination spanner #21
- HEX bit no.H6.
- Drive socket # 18
- Drive socket # 21
- Wheel impact socket #17
- Ratchet wrench
- Torque wrench
- Hydraulic transmission jack
- Wheel chock

BUY TOOLS

Replacement: front lower arm – BMW E82. Professionals recommend:

- The replacement procedure is identical for the left and right lower control arms.
- Please note: all work on the car – BMW E82 – should be done with the engine switched off.

CARRY OUT REPLACEMENT IN THE FOLLOWING ORDER:

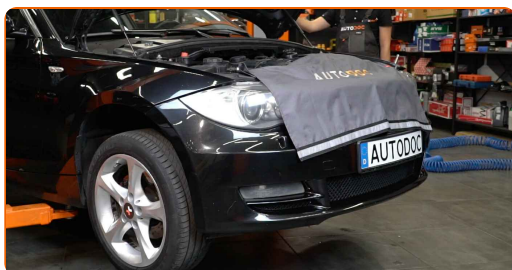
1 Secure the wheels with chocks.



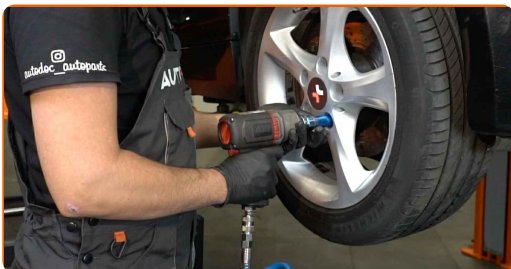
2 Loosen the wheel mounting bolts. Use wheel impact socket #17.



3 Raise the front of the car and secure on supports.



4 Unscrew the wheel bolts.



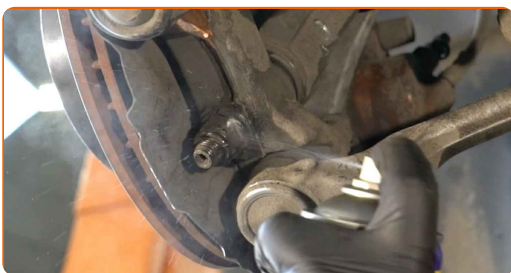
AUTODOC recommends:

- To avoid injury, hold up the wheel when unscrewing the bolts.

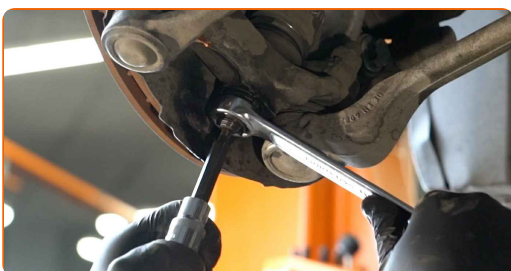
5 Remove the wheel.



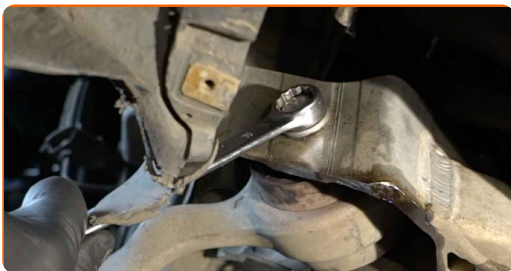
6 Clean all joints of the arm. Use a wire brush. Use WD-40 spray.



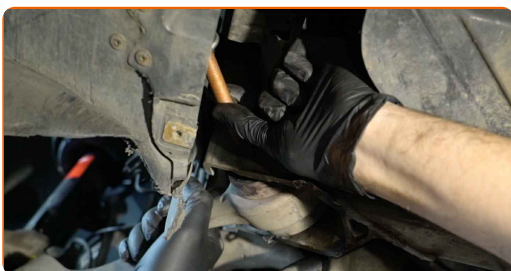
7 Unscrew the ball joint fastening to the steering knuckle. Use a combination spanner #21. Use HEX No.H6. Use a ratchet wrench.



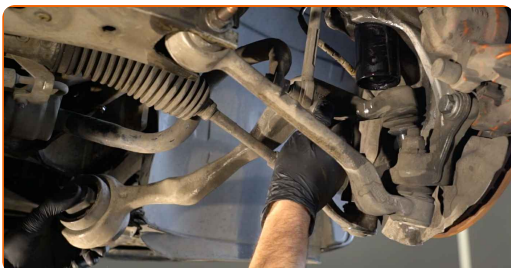
8 Unscrew the front arm fastener. Use a combination spanner #18. Use a drive socket #18. Use a ratchet wrench.



9 Remove the front fastener of the control arm.



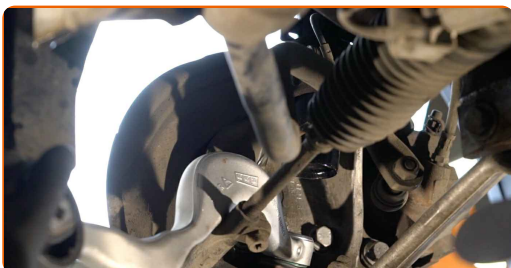
10 Remove the arm.



11 Clean the mounting seats and the thread of the suspension arm. Use a wire brush. Use WD-40 spray.



12 Install a new arm.



Replacement: front lower arm – BMW E82. Tip from AUTODOC:

- During the installation process, use only new bolts and nuts.
- Do not damage the ball joint cover.

13

Install the front fastener of the arm.



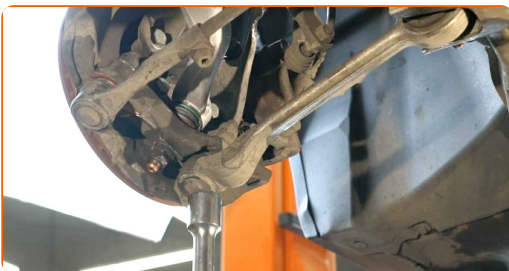
14

Screw the fasteners of the ball joint. Use a drive socket #21. Use a ratchet wrench.

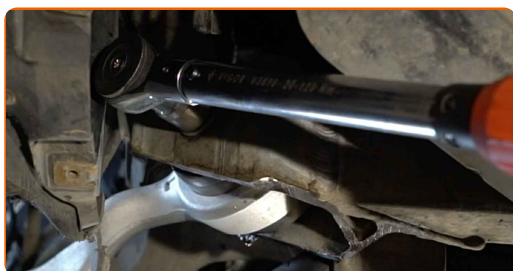


15

Support the arm. Use a hydraulic transmission jack.



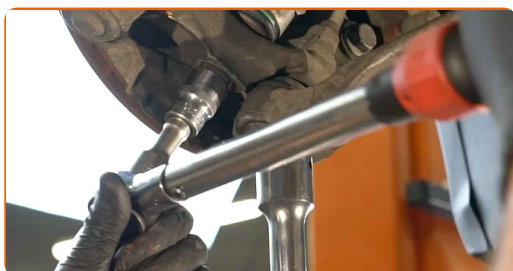
- 16** Tighten the front fastener connecting the control arm to the subframe. Use a drive socket #18. Use a torque wrench. Tighten it to 68 Nm torque. +90°



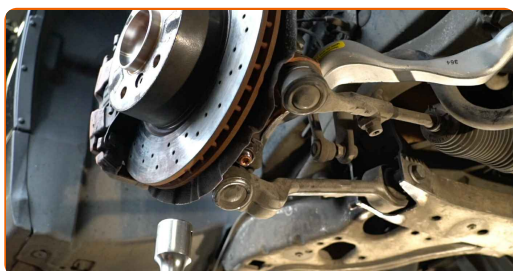
AUTODOC recommends:

- Important! Be sure to use new fasteners.

- 17** Tighten the fasteners of the ball joint. Use a drive socket #21. Use a torque wrench. Tighten it to 165 nm torque.



- 18** Remove the support from under the arm.



Replacement: front lower arm – BMW E82. AUTODOC recommends:

- Lower the hydraulic transmission jack smoothly, without jerks, to avoid damaging assemblies and mechanisms.

19

Treat all joints of the arm. Use copper grease.



20

Treat the surface where the brake disc contacts the wheel rim. Use copper grease.



21

Clean the brake disk surface. Use a brake cleaner.



Replacement: front lower arm – BMW E82. Tip:

- After applying the spray, wait a few minutes.

22 Install the wheel.



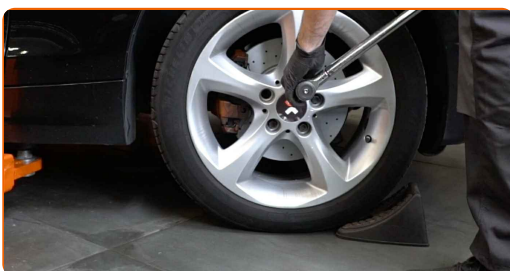
AUTODOC recommends:

- Important! Hold the wheel while screwing in the fastening bolts. BMW E82

23 Screw in the wheel bolts. Use wheel impact socket #17.



24 Lower the car and working in a cross order, tighten the wheel bolts. Use wheel impact socket #17. Use a torque wrench. Tighten it to 120 Nm torque.



25

Remove the jacks and chocks.



WELL DONE! 

[VIEW MORE TUTORIALS](#)

AUTODOC – TOP QUALITY AND AFFORDABLE CAR PARTS ONLINE

AUTODOC MOBILE APP: GREAT DEALS AND CONVENIENT SHOPPING



+ AUTODOC

GET IT ON
Google Play

Download on the
App Store

Download

A GREAT SELECTION OF SPARE PARTS FOR YOUR CAR

BUY SPARE PARTS FOR BMW

CONTROL ARM: A WIDE SELECTION

CHOOSE CAR PARTS FOR BMW E82

CONTROL ARM FOR BMW: BUY NOW

CONTROL ARM FOR BMW E82: THE BEST DEALS & OFFERS

DISCLAIMER:

The document contains only general recommendations that may be useful for you when you perform repair or replacement work. AUTODOC shall not be liable for any loss, injury, damage of property occurring in the repair or replacement process due to incorrect use or misinterpretation of the provided information.

AUTODOC shall not be liable for any possible mistakes and uncertainties in this guide. The information provided is for information purposes only and cannot replace advice from specialists.

AUTODOC shall not be liable for incorrect or hazardous usage of equipment, tools and car parts. AUTODOC strongly recommends to be careful and observe the safety rules when performing repair or replacement works. Remember: usage of low quality auto parts does not guarantee you the appropriate level of road safety.

© Copyright 2022 – All the contents of this website, in particular texts, photographs and graphics, are protected by copyright. All rights, including reproduction, publication, editing and translation rights, are reserved by AUTODOC GmbH.