



How to change rear ABS
sensor on **VW Passat B7**
saloon – replacement
guide

VIDEO TUTORIAL



Important!

This replacement procedure can be used for:

VW Passat B7 Saloon (362) 1.4 TSI, VW Passat B7 Saloon (362) 1.8 TSI, VW Passat B7 Saloon (362) 2.0 TSI, VW Passat B7 Saloon (362) 1.6 TDI, VW Passat B7 Saloon (362) 2.0 TDI, VW Passat B7 Saloon (362) 1.4 TSI EcoFuel, VW Passat B7 Variant (365) 1.4 TSI, VW Passat B7 Variant (365) 1.8 TSI, VW Passat B7 Variant (365) 1.6 TDI, VW Passat B7 Variant (365) 2.0 TSI, VW Passat B7 Variant (365) 2.0 TDI, VW Passat B7 Variant (365) 1.4 TSI EcoFuel, VW Touran I (1T3) 1.2 TSI, VW Jetta Mk6 (162, 163, AV3, AV2) 1.2 TSI, VW Jetta Mk6 (162, 163, AV3, AV2) 1.6 TDI, (+ 64)

The steps may slightly vary depending on the car design.

REPLACEMENT: ABS SENSOR – VW PASSAT B7
SALOON. LIST OF THE TOOLS YOU'LL NEED:



- Wire brush
- WD-40 spray
- All-purpose cleaning spray
- Electronic spray
- Multipurpose grease
- Brake cleaner
- Copper grease
- Torque wrench
- HEX bit No.H5
- Wheel impact socket #17
- Ratchet wrench
- Crow bar
- Wheel chock

BUY TOOLS

Replacement: ABS sensor – VW Passat B7 saloon. Professionals recommend:

- All work should be done with the engine stopped.

REPLACEMENT: ABS SENSOR – VW PASSAT B7 SALOON. RECOMMENDED SEQUENCE OF STEPS:

1 Secure the wheels with chocks.

2 Loosen the wheel mounting bolts. Use wheel impact socket #17.



3 Raise the rear of the car and secure on supports.



4 Unscrew the wheel bolts.



AUTODOC recommends:

- Warning! To avoid injury, hold the wheel while unscrewing the fastening bolts. VW Passat B7 saloon

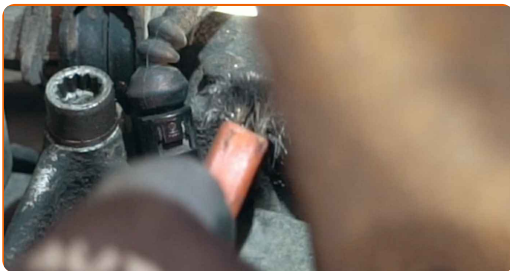
5

Remove the wheel.



6

Clean the ABS sensor fastener. Use a wire brush. Use WD-40 spray. Use all-purpose cleaning spray.



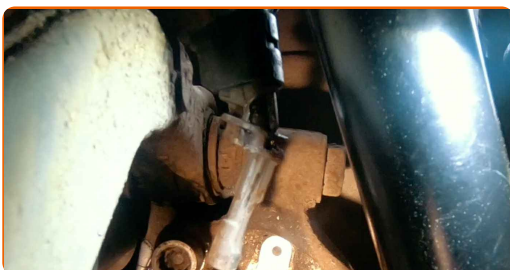
7

Unscrew the ABS sensor fastener. Use HEX No.H5. Use a ratchet wrench.



8

Disconnect the ABS sensor.



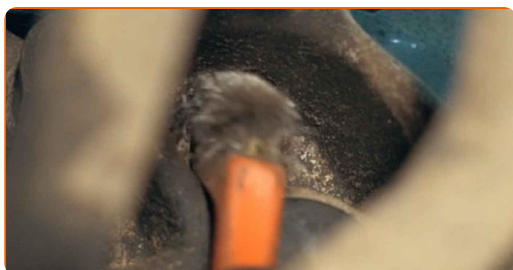
9 Detach the ABS sensor connector.



10 Treat the ABS sensor connector. Use dielectric grease.



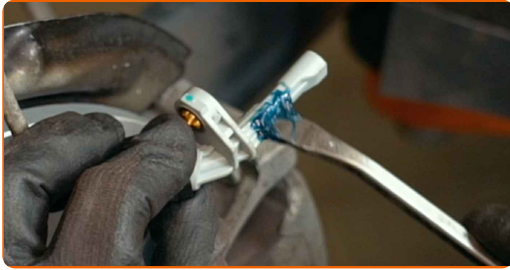
11 Clean the ABS sensor mounting seat. Use a wire brush. Use WD-40 spray.



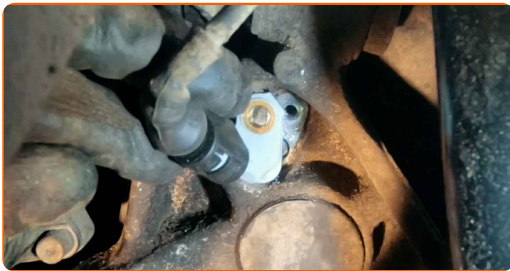
12 Attach the ABS sensor connector.



13 Treat the ABS sensor fastener. Use a multipurpose grease. Use a crowbar.



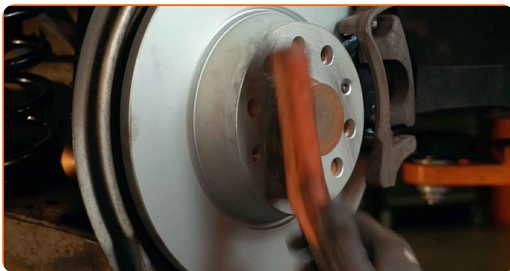
14 Connect the ABS sensor.



15 Tighten the fastener connecting the ABS sensor to the stub axle. Use HEX No.H5. Use a torque wrench. Tighten it to 7 Nm torque.



16 Clean the wheel rim mounting seat. Use a wire brush.



17

Treat the surface where the brake disc contacts the wheel rim. Use copper grease.



18

Clean the brake disk surface. Use a brake cleaner.



AUTODOC recommends:

- Replacement: ABS sensor – VW Passat B7 saloon. After applying the spray, wait a few minutes.

19

Install the wheel.

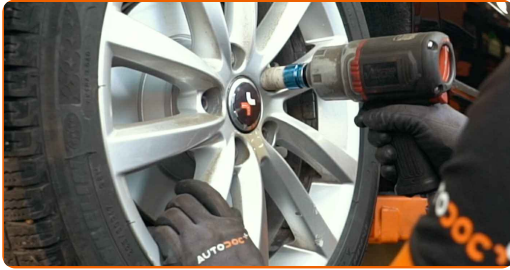


AUTODOC recommends:

- Important! Hold the wheel while screwing in the fastening bolts. VW Passat B7 saloon

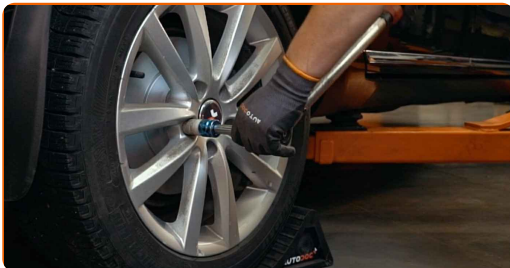
20

Screw in the wheel bolts. Use wheel impact socket #17.



21

Lower the car and working in a cross order, tighten the wheel bolts. Use wheel impact socket #17. Use a torque wrench. Tighten it to 120 Nm torque.



22

Remove the jacks and chocks.



WELL DONE! 👍

[VIEW MORE TUTORIALS](#)

AUTODOC – TOP QUALITY AND AFFORDABLE CAR PARTS ONLINE

AUTODOC MOBILE APP: GREAT DEALS AND CONVENIENT SHOPPING

AUTODOC+

GET IT ON
Google Play

Download on the
App Store

Download

A GREAT SELECTION OF SPARE PARTS FOR YOUR CAR

BUY SPARE PARTS FOR VW

ABS SENSOR: A WIDE SELECTION

CHOOSE CAR PARTS FOR VW PASSAT B7 SALOON

ABS SENSOR FOR VW: BUY NOW

**ABS SENSOR FOR VW PASSAT B7 SALOON: THE BEST
DEALS & OFFERS**

ⓘ DISCLAIMER:

The document contains only general recommendations that may be useful for you when you perform repair or replacement work. AUTODOC shall not be liable for any loss, injury, damage of property occurring in the repair or replacement process due to incorrect use or misinterpretation of the provided information.

AUTODOC shall not be liable for any possible mistakes and uncertainties in this guide. The information provided is for information purposes only and cannot replace advice from specialists.

AUTODOC shall not be liable for incorrect or hazardous usage of equipment, tools and car parts. AUTODOC strongly recommends to be careful and observe the safety rules when performing repair or replacement works. Remember: usage of low quality auto parts does not guarantee you the appropriate level of road safety.

© Copyright 2021 – All the contents of this website, in particular texts, photographs and graphics, are protected by copyright. All rights, including reproduction, publication, editing and translation rights, are reserved by AUTODOC GmbH.