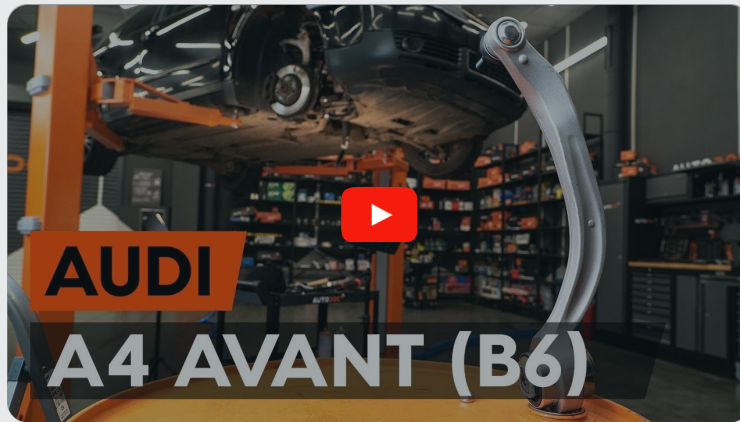




How to change front  
lower arm on **Audi A4 B6**  
**Avant** – replacement  
guide

## VIDEO TUTORIAL

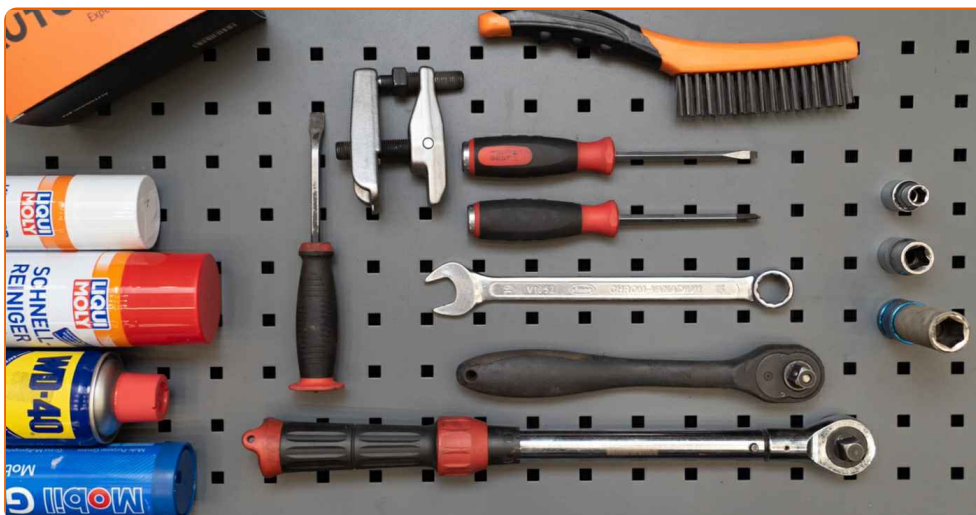
** Important!**

This replacement procedure can be used for:

AUDI A8 D2 (4D2, 4D8) 4.2 quattro, AUDI A8 D2 (4D2, 4D8) 2.8, AUDI A8 D2 (4D2, 4D8) 2.8 quattro, AUDI A4 B5 Saloon (8D2) 1.6, AUDI A4 B5 Saloon (8D2) 1.8, AUDI A4 B5 Saloon (8D2) 1.8 T, AUDI A4 B5 Saloon (8D2) 2.6, AUDI A4 B5 Saloon (8D2) 2.8, AUDI A4 B5 Saloon (8D2) 1.9 TDI, AUDI A4 B5 Saloon (8D2) 1.8 quattro, AUDI A4 B5 Saloon (8D2) 1.8 T quattro, AUDI A4 B5 Saloon (8D2) 2.6 quattro, AUDI A4 B5 Saloon (8D2) 2.8 quattro, AUDI A8 D2 (4D2, 4D8) 3.7, AUDI A8 D2 (4D2, 4D8) 3.7 quattro, (+ 116)

The steps may slightly vary depending on the car design.

**REPLACEMENT: FRONT LOWER ARM – AUDI A4 B6  
AVANT. LIST OF THE TOOLS YOU'LL NEED:**



- Wire brush
- WD-40 spray
- Brake cleaner
- Multipurpose grease
- Copper grease
- Combination spanner #18
- Drive socket # 10
- Drive socket # 18
- Wheel impact socket #17
- Ratchet wrench
- Torque wrench
- Phillips screwdriver
- Flat Screwdriver
- Ball joint puller
- Crow bar
- Hydraulic transmission jack
- Wheel chock

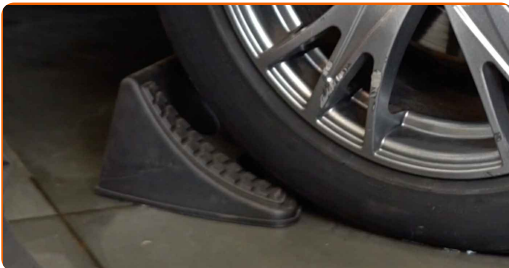
**BUY TOOLS**

Replacement: front lower arm – Audi A4 B6 Avant. AUTODOC experts recommend:

- The replacement procedure is identical for the left and right lower control arms.
- All work should be done with the engine stopped.

## REPLACEMENT: FRONT LOWER ARM – AUDI A4 B6 AVANT. USE THE FOLLOWING PROCEDURE:

**1** Secure the wheels with chocks.



**2** Loosen the wheel mounting bolts. Use wheel impact socket #17.



**3** Raise the front of the car and secure on supports.



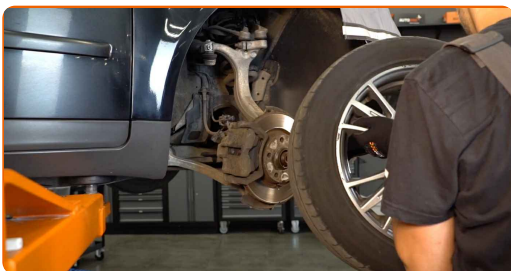
**4** Unscrew the wheel bolts.



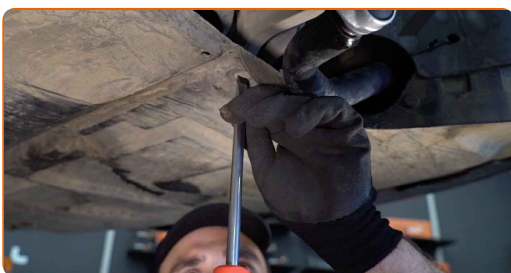
**AUTODOC recommends:**

- Important! Hold the wheel while unscrewing the fastening bolts. Audi A4 B6 Avant

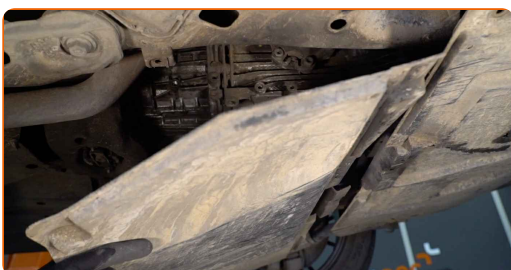
**5** Remove the wheel.



**6** Unscrew fixing bolts of the protective cover. Use a flat screwdriver.

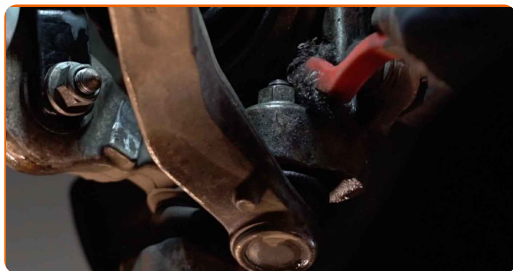


**7** Remove the protective cover.



8

Clean all joints of the arm. Use a wire brush. Use WD-40 spray.

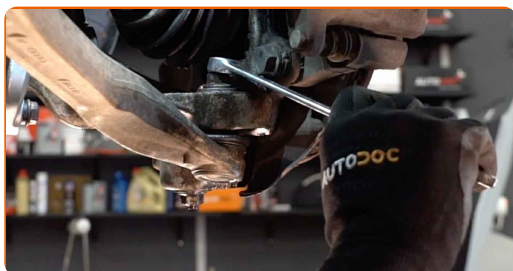


Replacement: front lower arm – Audi A4 B6 Avant. Tip:

- After applying the spray, wait a few minutes.
- Wear protective goggles.

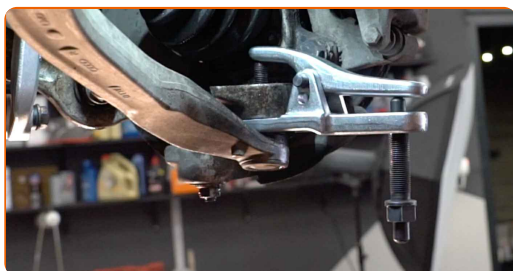
9

Unscrew the ball joint fastening to the steering knuckle. Use a combination spanner #18.



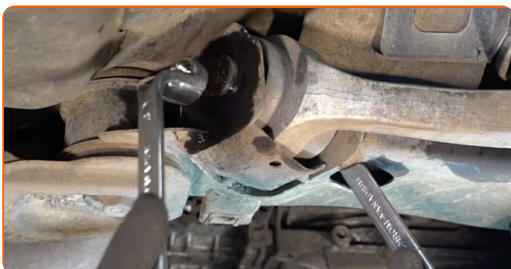
10

Disconnect the ball joint from the steering knuckle. Use a ball joint puller.



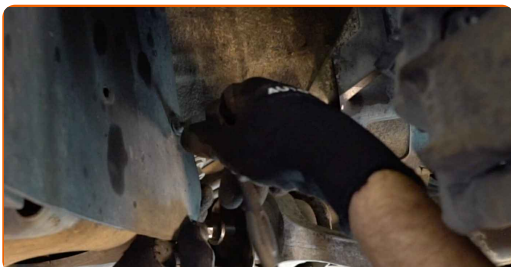
**11**

Unscrew the rear fastener connecting the control arm to the subframe. Use a combination spanner #18 (2 pieces).



**12**

Unscrew and remove the wheel arch cover fasteners. Use a Phillips screwdriver. Use a drive socket #10. Use a ratchet wrench.



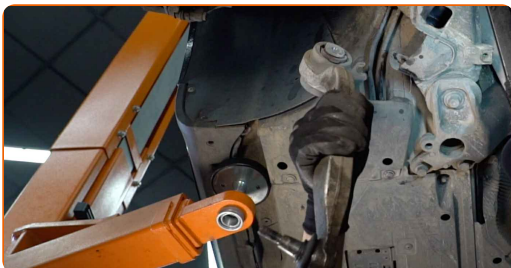
**13**

Remove the fastening bolt. Use a crowbar.



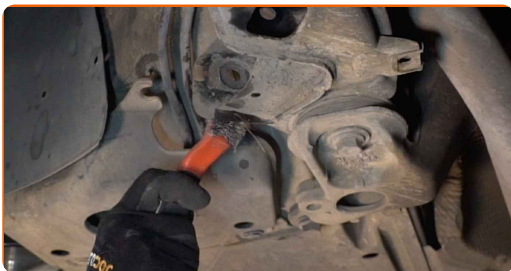
**14**

Remove the arm.



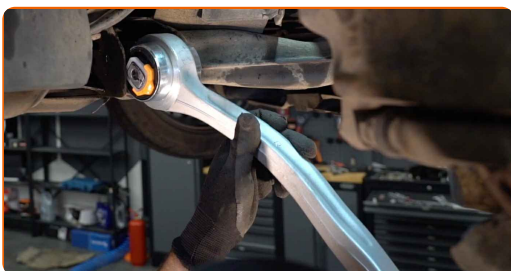
15

Clean the mounting seats and the thread of the suspension arm. Use a wire brush. Use WD-40 spray.



16

Install a new arm.

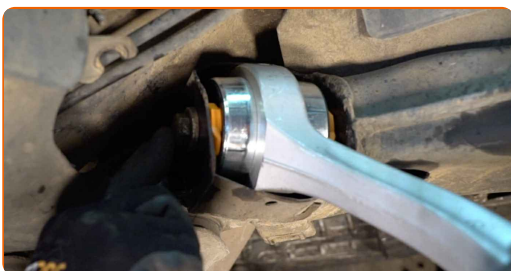


Replacement: front lower arm – Audi A4 B6 Avant. AUTODOC recommends:

- During the installation process, use only new bolts and nuts.
- Do not damage the ball joint cover.

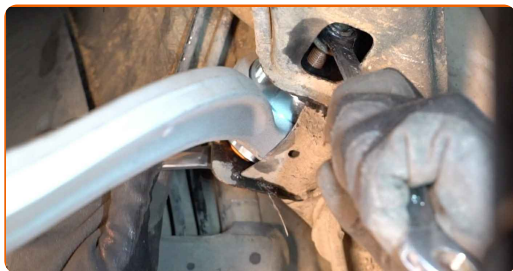
17

Install the fastening bolt.





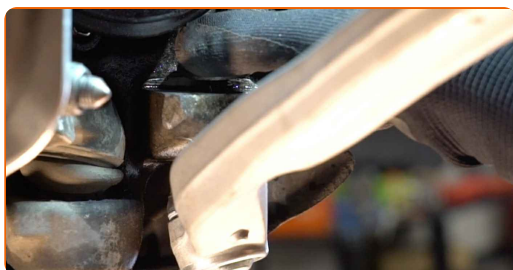
**18** Screw the rear fastener connecting the control arm to the subframe. Use a combination spanner #18 (2 pieces).



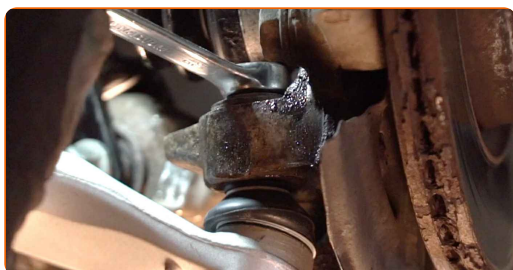
**19** Treat all joints of the arm. Use a multipurpose grease. Use a flat screwdriver.



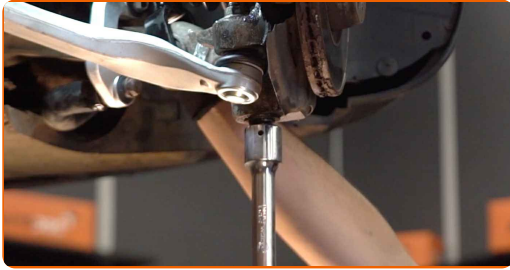
**20** Connect the ball joint to the steering knuckle.



**21** Screw the fasteners of the ball joint. Use a combination spanner #18. Do not tighten it.



**22** Support the arm. Use a hydraulic transmission jack.



**23** Tighten the rear fastener connecting the control arm to the subframe. Use a combination spanner #18. Use a drive socket #18. Use a torque wrench. Tighten it to 70 Nm torque.+180°



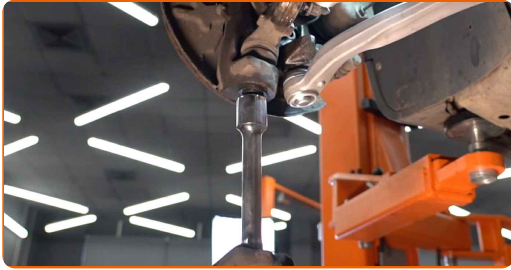
Replacement: front lower arm – Audi A4 B6 Avant. Professionals recommend:

- Important! Be sure to use new fasteners.

**24** Tighten the ball joint fastener. Use a drive socket #18. Use a torque wrench. Tighten it to 120 Nm torque.



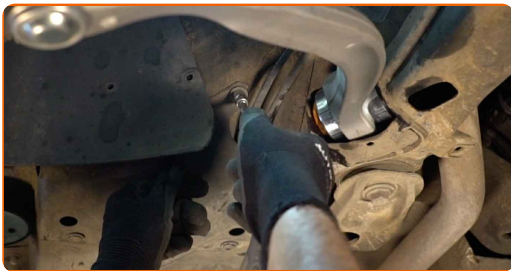
**25** Remove the support from under the arm.



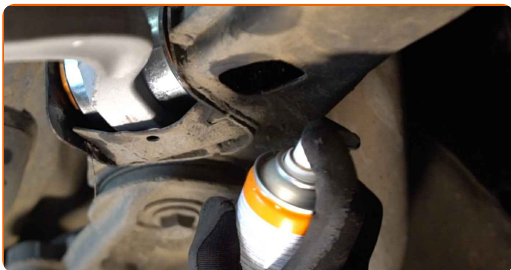
**AUTODOC recommends:**

- Lower the hydraulic transmission jack smoothly, without jerks, to avoid damaging assemblies and mechanisms.

**26** Install and tighten the wheel arch cover fasteners. Use a Phillips screwdriver. Use a drive socket #10. Use a ratchet wrench.



**27** Treat all joints of the arm. Use copper grease.



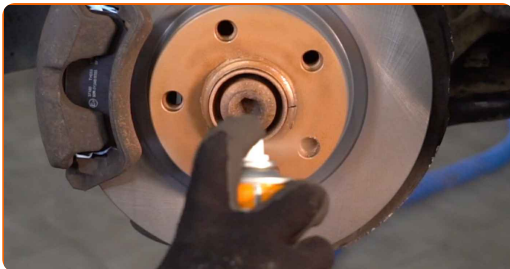
**28** Install the protective cover.



**29** Tighten fixing bolts of the protective cover. Use a flat screwdriver.



**30** Treat the surface where the brake disc contacts the wheel rim. Use copper grease.



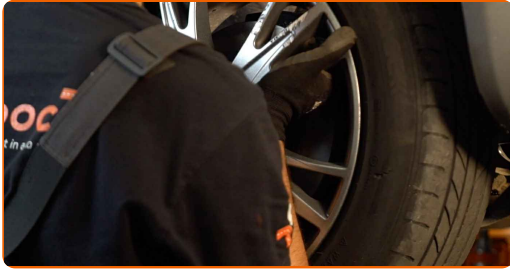
**31** Clean the brake disk surface. Use a brake cleaner.



**AUTODOC recommends:**

- Replacement: front lower arm – Audi A4 B6 Avant. After applying the spray, wait a few minutes.

**32** Install the wheel.



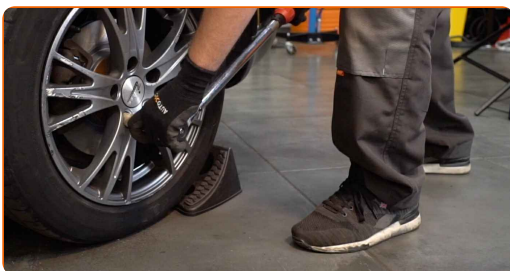
Replacement: front lower arm – Audi A4 B6 Avant. Tip from AUTODOC experts:

- To avoid injury, hold up the wheel when screwing in the fastening bolts.

**33** Screw in the wheel bolts. Use wheel impact socket #17.

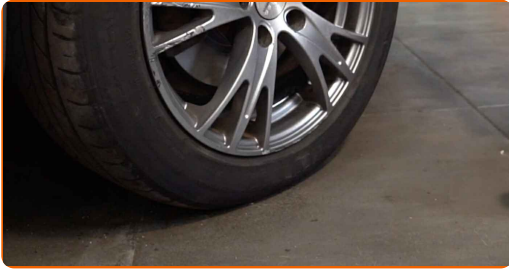


**34** Lower the car and working in a cross order, tighten the wheel bolts. Use a torque wrench. Tighten it to 120 nm torque.



35

Remove the jacks and chocks.



**WELL DONE!** 

[VIEW MORE TUTORIALS](#)

# AUTODOC – TOP QUALITY AND AFFORDABLE CAR PARTS ONLINE

**AUTODOC MOBILE APP: GREAT DEALS AND CONVENIENT SHOPPING**



**+ AUTODOC**

GET IT ON  
**Google Play**

Download on the  
**App Store**

**Download**

**A GREAT SELECTION OF SPARE PARTS FOR YOUR CAR**

**BUY SPARE PARTS FOR AUDI**

**CONTROL ARM: A WIDE SELECTION**

**CHOOSE CAR PARTS FOR AUDI A4 B6 AVANT**

**CONTROL ARM FOR AUDI: BUY NOW**

**CONTROL ARM FOR AUDI A4 B6 AVANT: THE BEST DEALS  
& OFFERS**

### **DISCLAIMER:**

The document contains only general recommendations that may be useful for you when you perform repair or replacement work. AUTODOC shall not be liable for any loss, injury, damage of property occurring in the repair or replacement process due to incorrect use or misinterpretation of the provided information.

AUTODOC shall not be liable for any possible mistakes and uncertainties in this guide. The information provided is for information purposes only and cannot replace advice from specialists.

AUTODOC shall not be liable for incorrect or hazardous usage of equipment, tools and car parts. AUTODOC strongly recommends to be careful and observe the safety rules when performing repair or replacement works. Remember: usage of low quality auto parts does not guarantee you the appropriate level of road safety.

© Copyright 2022 – All the contents of this website, in particular texts, photographs and graphics, are protected by copyright. All rights, including reproduction, publication, editing and translation rights, are reserved by AUTODOC GmbH.