



How to change pollen
filter on **VW Passat B5
Variant** – replacement
guide

VIDEO TUTORIAL



Important!

This replacement procedure can be used for:

VW CORRADO (53I) 1.8 G60, VW CORRADO (53I) 2.0 i 16V, VW CORRADO (53I) 2.9 VR6, VW GOLF III (1H1) 1.9 D, VW GOLF III (1H1) 1.9 TD,GTD, VW GOLF III (1H1) 1.9 TDI, VW GOLF III (1H1) 1.4, VW GOLF III (1H1) 1.6, VW GOLF III (1H1) 1.8, VW GOLF III (1H1) 1.8 Syncro, VW GOLF III (1H1) 2.0, VW GOLF III (1H1) 2.0 GTI 16V, VW GOLF III (1H1) 2.8 VR6, VW Vento (1H2) 1.9 D, VW Vento (1H2) 1.9 TD, (+ 135)

The steps may slightly vary depending on the car design.

Replacement: pollen filter – VW Passat B5 Variant. Tip:

- Replace the cabin filter at least once every six months, in early spring and autumn seasons.
- Follow the terms, recommendations and requirements of the part operation provided by the manufacturer.
- If the air flow into the cabin has sharply reduced, replace the filter before a scheduled maintenance.
- All work should be done with the engine stopped.

REPLACEMENT: POLLEN FILTER – VW PASSAT B5 VARIANT. TAKE THE FOLLOWING STEPS:

1

Open the bonnet.



2

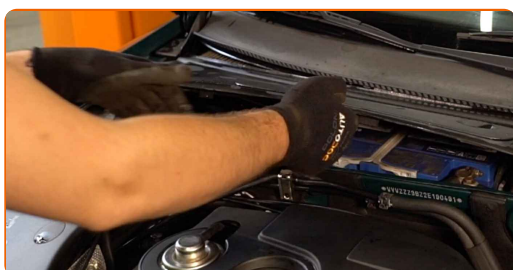
Use a fender protection cover to prevent damaging paintwork and plastic parts of the car.



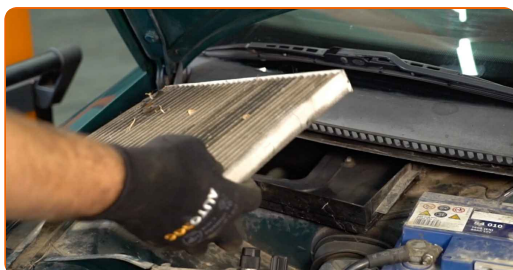
3 Remove the cowl grille seal.



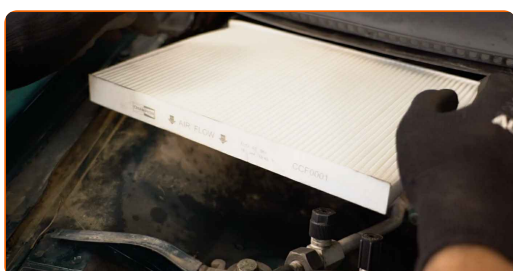
4 Raise up and remove the cowl grille.



5 Take out the cabin filter bracket.



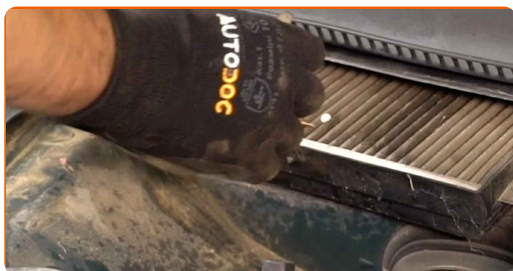
6 Remove the filter element from the filter housing.



Replacement: pollen filter – VW Passat B5 Variant. Professionals recommend:

- Do not attempt to clean and reuse the filter - it will affect the quality of air cleaning inside the car.

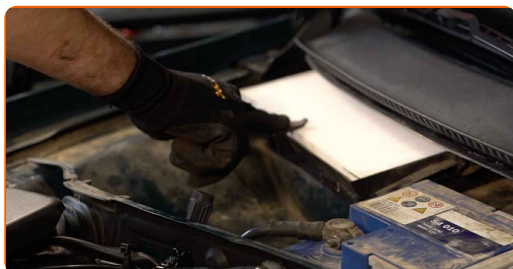
7 Insert a new filter element into the filter housing. Make sure that the filter edge fits tight to the housing.



AUTODOC recommends:

- Replacement: pollen filter – VW Passat B5 Variant. Be sure to position the filtering element correctly. Avoid misalignment.
- Take care to only use quality filters.
- Follow the air flow direction arrow on the filter.

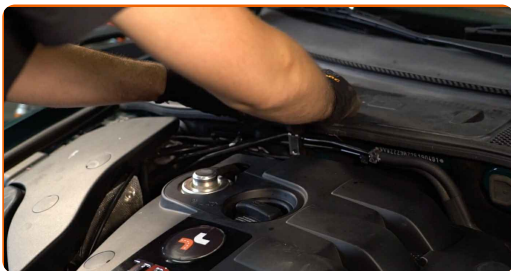
8 Install the cabin filter bracket.



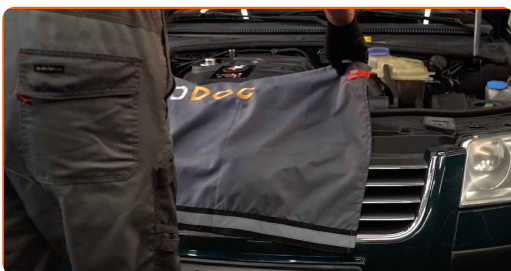
9 Install and secure the cowl grille.



10 Install the cowl grille seal.



11 Remove the fender protection cover.



12 Close the hood.



WELL DONE! 

VIEW MORE TUTORIALS

AUTODOC – TOP QUALITY AND AFFORDABLE CAR PARTS ONLINE

AUTODOC MOBILE APP: GREAT DEALS AND CONVENIENT SHOPPING



+ AUTODOC

GET IT ON  **Google Play**

 **Download on the App Store**

Download

A GREAT SELECTION OF SPARE PARTS FOR YOUR CAR

BUY SPARE PARTS FOR VW

POLLEN FILTER: A WIDE SELECTION

CHOOSE CAR PARTS FOR VW PASSAT B5 VARIANT

POLLEN FILTER FOR VW: BUY NOW

POLLEN FILTER FOR VW PASSAT B5 VARIANT: THE BEST DEALS & OFFERS

DISCLAIMER:

The document contains only general recommendations that may be useful for you when you perform repair or replacement work. AUTODOC shall not be liable for any loss, injury, damage of property occurring in the repair or replacement process due to incorrect use or misinterpretation of the provided information.

AUTODOC shall not be liable for any possible mistakes and uncertainties in this guide. The information provided is for information purposes only and cannot replace advice from specialists.

AUTODOC shall not be liable for incorrect or hazardous usage of equipment, tools and car parts. AUTODOC strongly recommends to be careful and observe the safety rules when performing repair or replacement works. Remember: usage of low quality auto parts does not guarantee you the appropriate level of road safety.

© Copyright 2023 – All the contents of this website, in particular texts, photographs and graphics, are protected by copyright. All rights, including reproduction, publication, editing and translation rights, are reserved by AUTODOC SE.