



How to change rear coil
springs on **Mercedes**
W245 – replacement
guide

VIDEO TUTORIAL



ⓘ Important!

This replacement procedure can be used for:

MERCEDES-BENZ A-Class (W169) A 200 CDI (169.308, 169.008), MERCEDES-BENZ A-Class (W169) A 170 (169.032, 169.332), MERCEDES-BENZ A-Class (W169) A 150 (169.031, 169.331), MERCEDES-BENZ A-Class (W169) A 200 (169.033, 169.333), MERCEDES-BENZ A-Class (W169) A 160 CDI (169.006, 169.306), MERCEDES-BENZ A-Class (W169) A 180 CDI (169.007, 169.307), MERCEDES-BENZ A-Class (W169) A 200 CDI (169.008, 169.308), MERCEDES-BENZ B-Class (W245) B 180 CDI (245.207), MERCEDES-BENZ B-Class (W245) B 200 CDI (245.208), MERCEDES-BENZ B-Class (W245) B 170 (245.232), MERCEDES-BENZ B-Class (W245) B 200 TURBO (245.234), MERCEDES-BENZ B-Class (W245) B 150 (245.231), MERCEDES-BENZ A-Class (W169) A 200 TURBO (169.034, 169.334), MERCEDES-BENZ A-Class (W169) A 160 (169.031, 169.331), MERCEDES-BENZ A-Class (W169) A 180 (169.032, 169.332), (+ 2)

The steps may slightly vary depending on the car design.

REPLACEMENT: COIL SPRINGS – MERCEDES W245. LIST OF THE TOOLS YOU'LL NEED:



- Wire brush
- WD-40 spray
- Brake cleaner
- Copper grease
- Combination spanner #16
- Combination spanner #18
- Drive socket # 16
- Drive socket # 18
- Wheel impact socket #H12
- Ratchet wrench
- Torque wrench
- Hydraulic transmission jack
- Wheel chock

BUY TOOLS

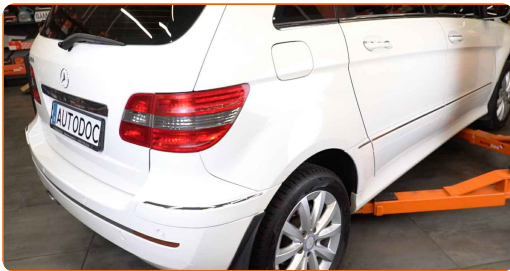
Replacement: coil springs – Mercedes W245. Tip from AUTODOC:

- Both coil springs of the rear suspension should be replaced simultaneously.
- The replacement procedure is identical for the left and right coil springs of the rear suspension.
- All work should be done with the engine stopped.

REPLACEMENT: COIL SPRINGS – MERCEDES W245. TAKE THE FOLLOWING STEPS:

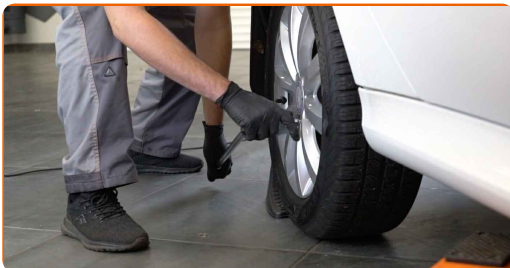
1

Secure the wheels with chocks.



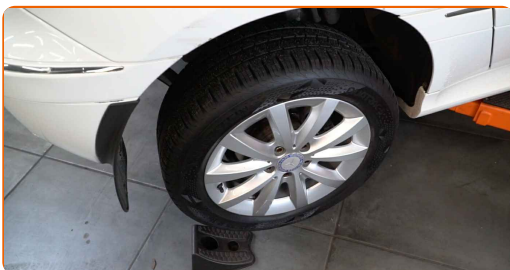
2

Loosen the wheel mounting bolts. Use wheel impact socket #H12.



3

Raise the rear of the car and secure on supports.



4

Unscrew the wheel bolts.

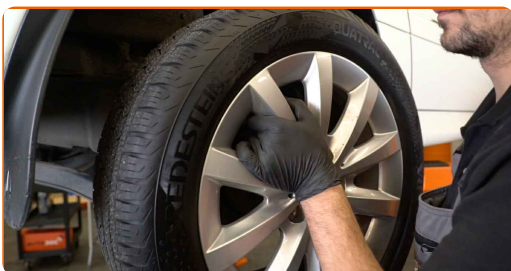


Replacement: coil springs – Mercedes W245. AUTODOC recommends:

- To avoid injury, hold up the wheel when unscrewing the bolts.

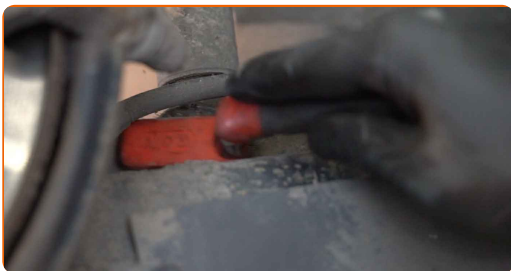
5

Remove the wheel.

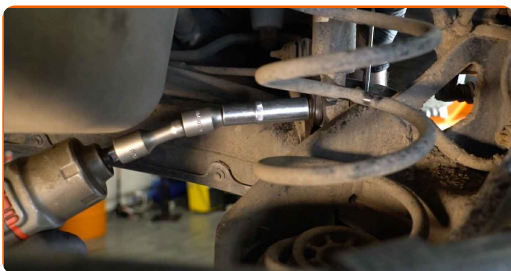


6

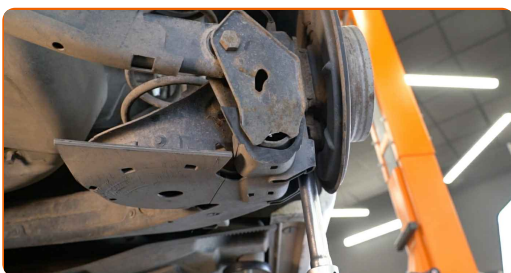
Clean the shock absorber fasteners. Use a wire brush. Use WD-40 spray.



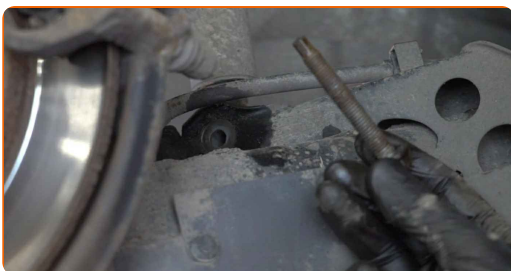
- 7 Unscrew the lower fastener of the shock absorber. Use a combination spanner #16. Use a drive socket #16. Use a ratchet wrench.



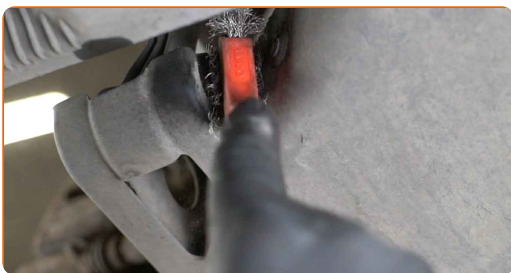
- 8 Support the arm. Use a hydraulic transmission jack.



- 9 Remove the fastening bolt.



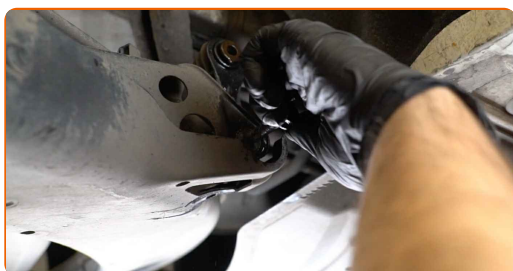
- 10 Clean the stabiliser link fasteners. Use a wire brush. Use WD-40 spray.



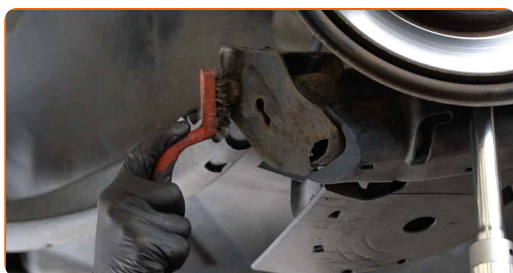
- 11** Unscrew the fastener connecting the stabilizer bar with the control arm. Use a combination spanner #16. Use a drive socket #16. Use a ratchet wrench.



- 12** Remove the fastening bolt.



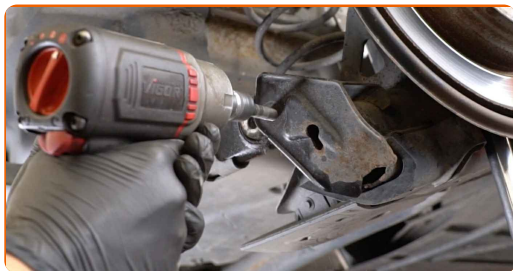
- 13** Clean all joints of the arm. Use a wire brush. Use WD-40 spray.



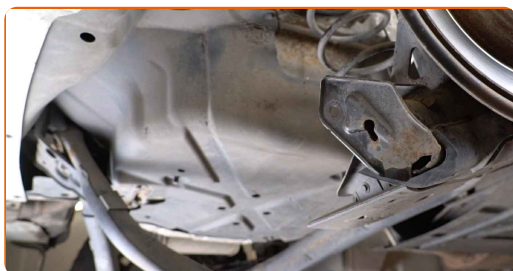
- 14** Unscrew the fastener connecting the control arm to the rear knuckle. Use a combination spanner #18. Use a drive socket #18. Use a ratchet wrench.



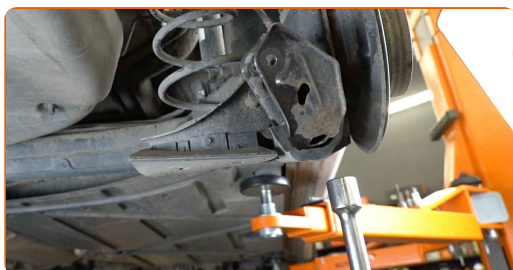
15 Remove the fastening bolt.



16 Detach the suspension arm from the rear knuckle.



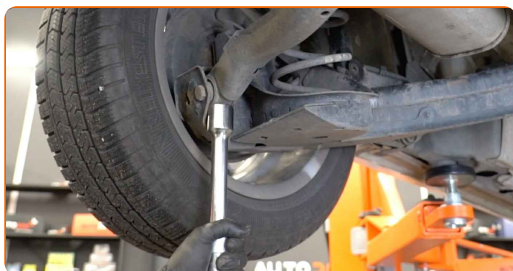
17 Remove the support from under the arm.



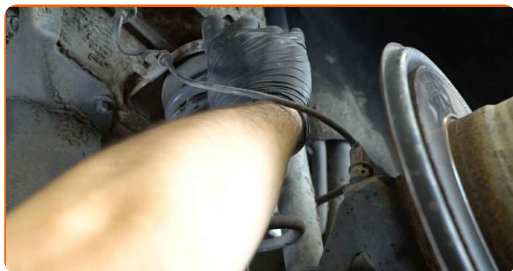
AUTODOC recommends:

- Replacement: coil springs – Mercedes W245. Lower the transmission jack smoothly, without jerks, to avoid damaging components and mechanisms.

18 Support the arm. Use a hydraulic transmission jack.



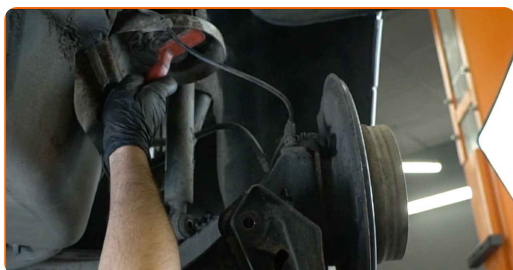
19 Disconnect the ABS sensor wiring.



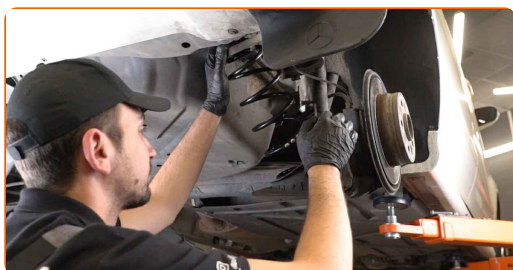
20 Remove the spring.



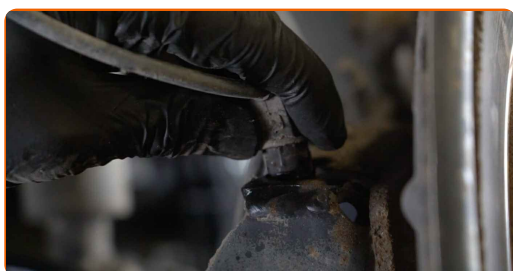
21 Clean the coil spring mounting seats. Use a wire brush. Use WD-40 spray.



22 Install the coil spring together with the rubber mounts into the mounting seats.

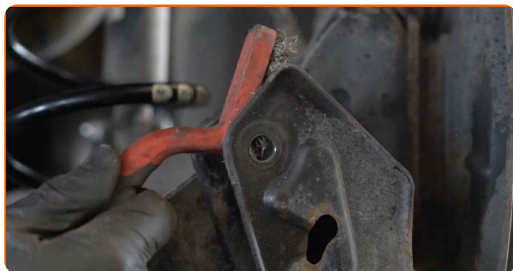


23 Connect the ABS sensor wiring.



24

Clean the mounting seats and the thread of the suspension arm. Use a wire brush. Use WD-40 spray.

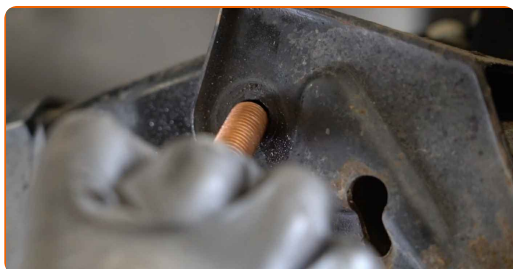


25

Attach the suspension arm to the rear knuckle.

26

Install the fastening bolt.



27

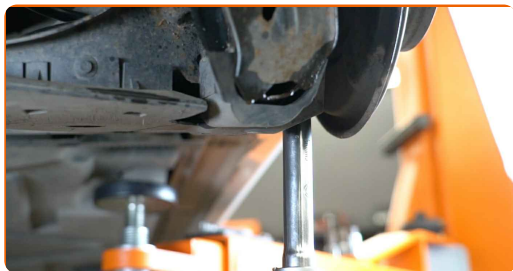
Remove the support from under the arm.



AUTODOC recommends:

- Mercedes W245 – Do not lower the transmission jack sharply to avoid damaging components and mechanisms of the car.

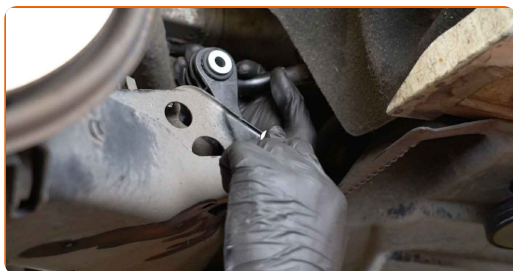
28 Support the arm. Use a hydraulic transmission jack.



29 Tighten the fastener connecting the suspension arm to the rear knuckle. Use a combination spanner #18. Use a drive socket #18. Use a torque wrench. Tighten it to 85 Nm torque.



30 Install the fastening bolt.

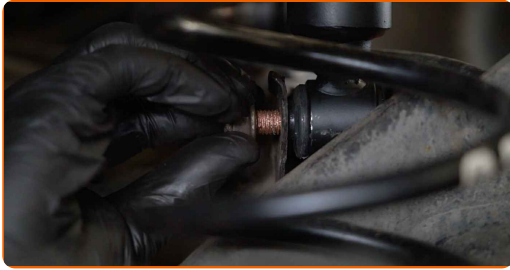


31 Tighten the fastener connecting the stabilizer bar with the control arm. Use a combination spanner #16. Use a drive socket #16. Use a torque wrench. Tighten it to 40 Nm torque.



32

Install the fastening bolt.



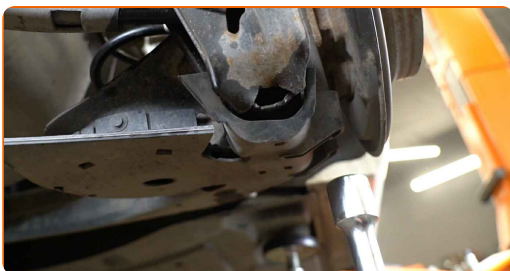
33

Tighten the lower fastener of the shock absorber. Use a drive socket #16. Use a torque wrench. Tighten it to 70 Nm torque.



34

Remove the support from under the arm.



Replacement: coil springs – Mercedes W245. Tip from AUTODOC experts:

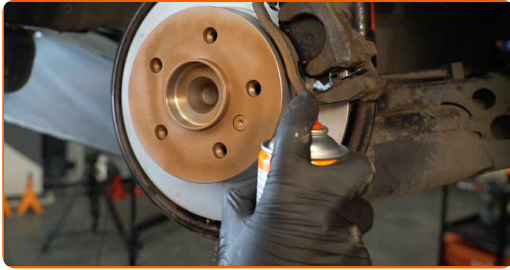
- Lower the hydraulic transmission jack smoothly, without jerks, to avoid damaging assemblies and mechanisms.

35

Treat the shock absorber fasteners. Use copper grease.

36

Treat the surface where the brake disc contacts the wheel rim. Use copper grease.



37

Clean the brake disk surface. Use a brake cleaner.



AUTODOC recommends:

- Replacement: coil springs – Mercedes W245. After applying the spray, wait a few minutes.

38

Install the wheel.

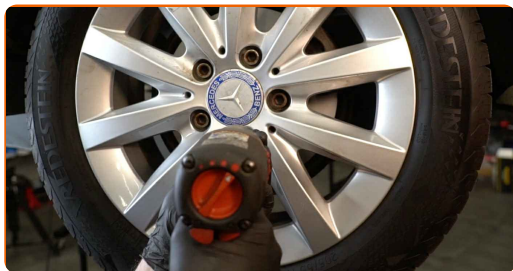


Replacement: coil springs – Mercedes W245. AUTODOC experts recommend:

- To avoid injury, hold up the wheel when screwing in the fastening bolts.

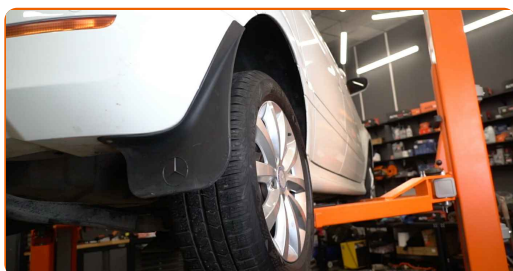
39

Screw in the wheel bolts. Use wheel impact socket #H12.



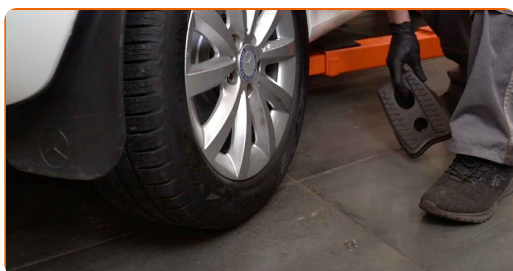
40

Lower the car and working in a cross order, tighten the wheel bolts. Use wheel impact socket #H12. Use a torque wrench. Tighten it to 130 Nm torque.



41

Remove the jacks and chocks.



WELL DONE! 

VIEW MORE TUTORIALS

AUTODOC – TOP QUALITY AND AFFORDABLE CAR PARTS ONLINE

AUTODOC MOBILE APP: GREAT DEALS AND CONVENIENT SHOPPING



+ AUTODOC

GET IT ON
Google Play

Download on the
App Store

Download

A GREAT SELECTION OF SPARE PARTS FOR YOUR CAR

BUY SPARE PARTS FOR MERCEDES

COIL SPRINGS: A WIDE SELECTION

CHOOSE CAR PARTS FOR MERCEDES W245

COIL SPRINGS FOR MERCEDES: BUY NOW

COIL SPRINGS FOR MERCEDES W245: THE BEST DEALS & OFFERS

DISCLAIMER:

The document contains only general recommendations that may be useful for you when you perform repair or replacement work. AUTODOC shall not be liable for any loss, injury, damage of property occurring in the repair or replacement process due to incorrect use or misinterpretation of the provided information.

AUTODOC shall not be liable for any possible mistakes and uncertainties in this guide. The information provided is for information purposes only and cannot replace advice from specialists.

AUTODOC shall not be liable for incorrect or hazardous usage of equipment, tools and car parts. AUTODOC strongly recommends to be careful and observe the safety rules when performing repair or replacement works. Remember: usage of low quality auto parts does not guarantee you the appropriate level of road safety.

© Copyright 2022 – All the contents of this website, in particular texts, photographs and graphics, are protected by copyright. All rights, including reproduction, publication, editing and translation rights, are reserved by AUTODOC GmbH.