



How to change rear
shock absorbers on
Mercedes W245 –
replacement guide

VIDEO TUTORIAL



ⓘ Important!

This replacement procedure can be used for:

MERCEDES-BENZ A-Class (W169) E-CELL (169.090), MERCEDES-BENZ A-Class (W169) A 200 CDI (169.308, 169.008), MERCEDES-BENZ A-Class (W169) A 170 (169.032, 169.332), MERCEDES-BENZ A-Class (W169) A 150 (169.031, 169.331), MERCEDES-BENZ A-Class (W169) A 200 (169.033, 169.333), MERCEDES-BENZ A-Class (W169) A 160 CDI (169.006, 169.306), MERCEDES-BENZ A-Class (W169) A 180 CDI (169.007, 169.307), MERCEDES-BENZ A-Class (W169) A 200 CDI (169.008, 169.308), MERCEDES-BENZ B-Class (W245) B 180 CDI (245.207), MERCEDES-BENZ B-Class (W245) B 200 CDI (245.208), MERCEDES-BENZ B-Class (W245) B 170 (245.232), MERCEDES-BENZ B-Class (W245) B 200 TURBO (245.234), MERCEDES-BENZ B-Class (W245) B 150 (245.231), MERCEDES-BENZ A-Class (W169) A 200 TURBO (169.034, 169.334), MERCEDES-BENZ B-Class (W245) B 170 NGT (245.233), (+ 5)

The steps may slightly vary depending on the car design.

REPLACEMENT: SHOCK ABSORBERS – MERCEDES W245. TOOLS YOU NEED:



- Wire brush
- WD-40 spray
- Brake cleaner
- Copper grease
- Combination spanner #16
- Drive socket # 16
- Drive socket # 17
- Wheel impact socket #H12
- Ratchet wrench
- Torque wrench
- Shock absorber socket DDN#6
- Crow bar
- Hydraulic transmission jack
- Wheel chock

BUY TOOLS

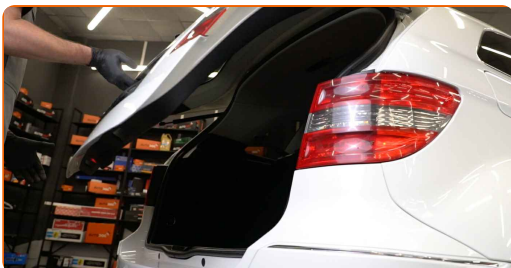
Replacement: shock absorbers – Mercedes W245. AUTODOC experts recommend:

- Both shock absorbers of the rear suspension should be replaced simultaneously.
- The replacement procedure is identical for the left and right shock absorbers of the rear suspension.
- Please note: all work on the car – Mercedes W245 – should be done with the engine switched off.

CARRY OUT REPLACEMENT IN THE FOLLOWING ORDER:

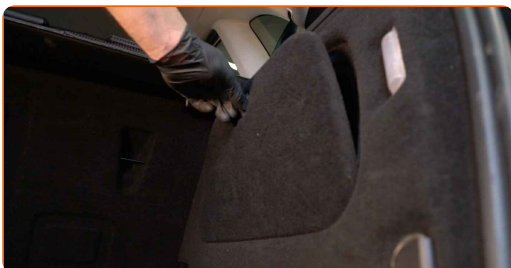
1

Open the boot lid.



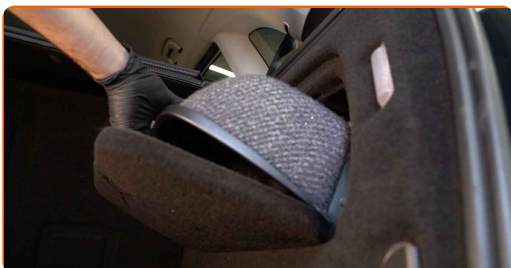
2

Remove the clips of the boot side lining.

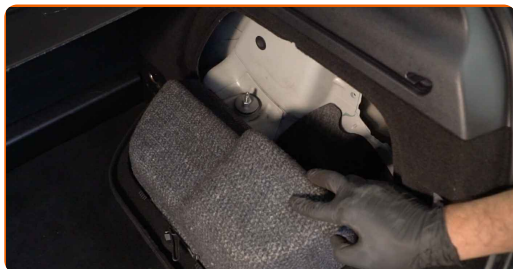


3

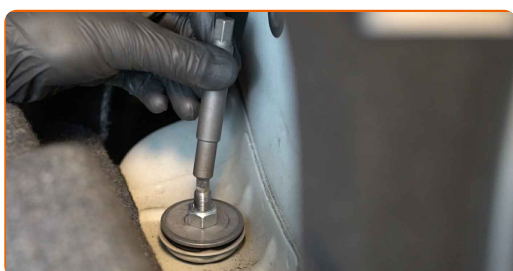
Detach the boot side lining.



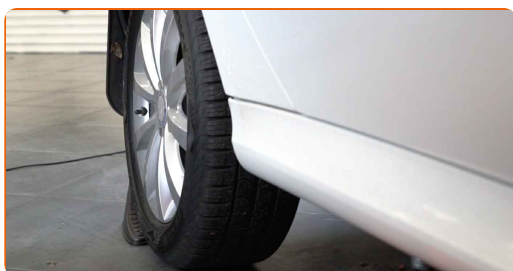
4 Remove the protective cap of the shock absorber mount.



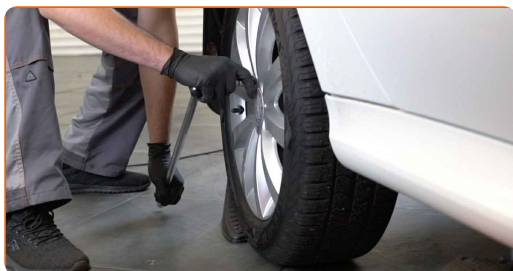
5 Loosen the upper fastener of the shock absorber. Use a drive socket #16. Use a shock absorber socket DD#6. Use a ratchet wrench.



6 Secure the wheels with chocks.



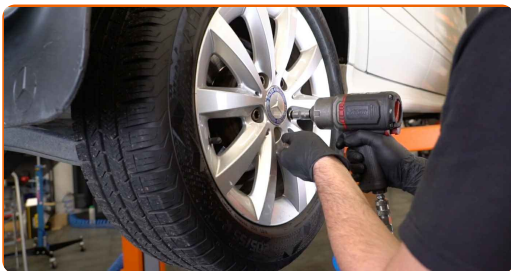
7 Loosen the wheel mounting bolts. Use wheel impact socket #H12.



8 Raise the rear of the car and secure on supports.



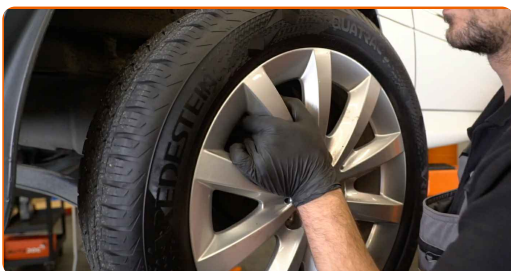
9 Unscrew the wheel bolts.



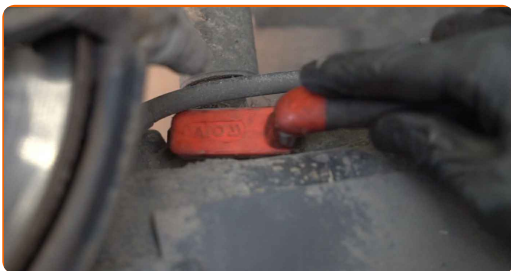
Replacement: shock absorbers – Mercedes W245. AUTODOC recommends:

- To avoid injury, hold up the wheel when unscrewing the bolts.

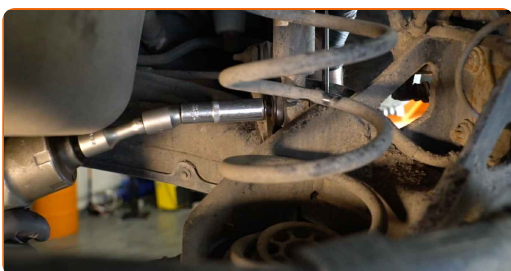
10 Remove the wheel.



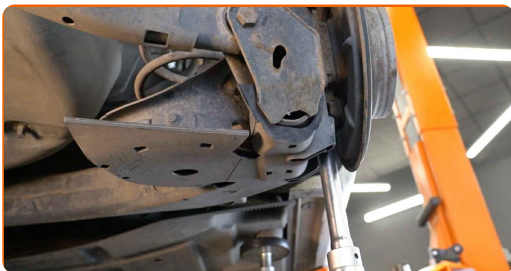
11 Clean the shock absorber fasteners. Use a wire brush. Use WD-40 spray.



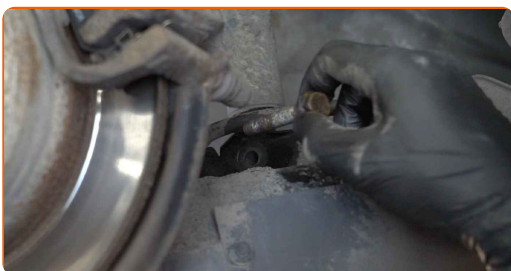
12 Unscrew the lower fastener of the shock absorber. Use a combination spanner #16. Use a drive socket #16. Use a ratchet wrench.



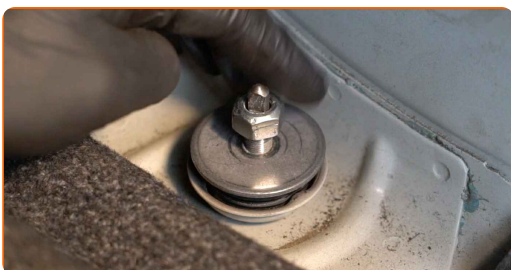
13 Support the arm. Use a hydraulic transmission jack.



14 Remove the fastening bolt.



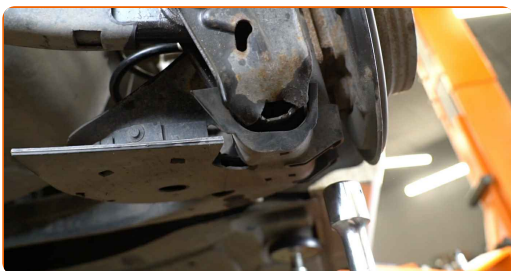
15 Unscrew the upper fastener of the shock absorber.



AUTODOC recommends:

- Important! Hold the shock absorber while unscrewing the fastening bolts.
Mercedes W245

16 Remove the support from under the arm.

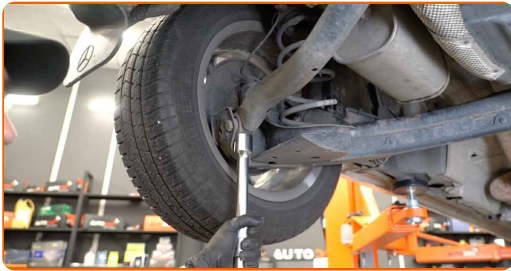


Replacement: shock absorbers – Mercedes W245. AUTODOC recommends:

- Lower the hydraulic transmission jack smoothly, without jerks, to avoid damaging assemblies and mechanisms.

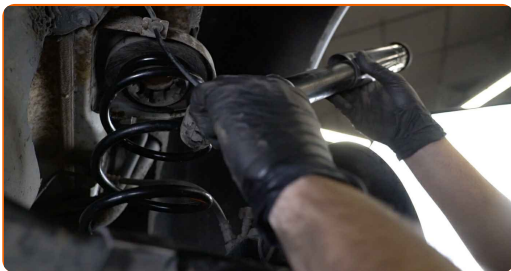
17

Support the arm. Use a hydraulic transmission jack.



18

Remove the shock absorber. Use a crowbar.



Replacement: shock absorbers – Mercedes W245. Tip from AUTODOC experts:

- Before installing a new shock absorber you should pump it manually 3-5 times.

19

Place the shock absorber in the wheel arch and secure it.



AUTODOC recommends:

- Mercedes W245 – To avoid injury, hold the shock absorber while screwing in the fastening bolts.

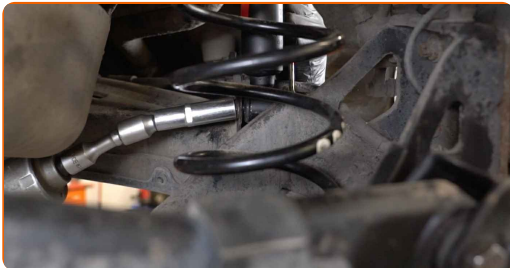
20

Install the fastening bolt.



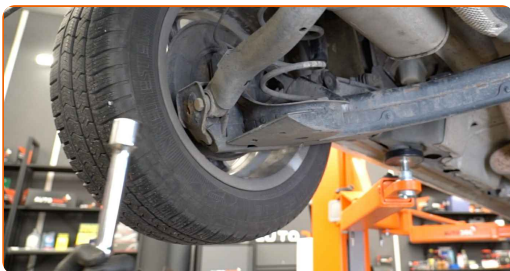
21

Screw in the lower fastener of the shock absorber. Use a combination spanner #16. Use a drive socket #16. Use a ratchet wrench.



22

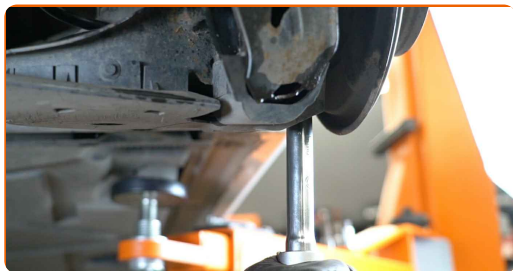
Remove the support from under the arm.



AUTODOC recommends:

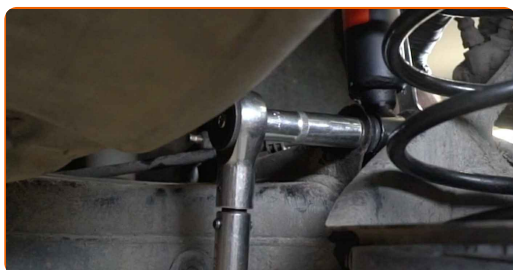
- Replacement: shock absorbers – Mercedes W245. Lower the transmission jack smoothly, without jerks, to avoid damaging components and mechanisms.

23 Support the arm. Use a hydraulic transmission jack.

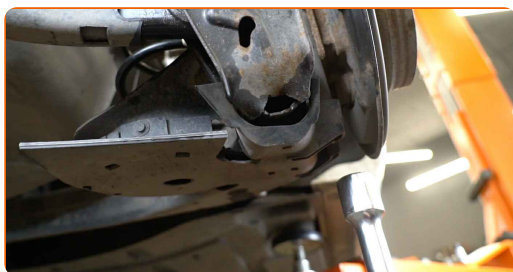


24 Screw the upper fastener of the shock absorber.

25 Tighten the lower fastener of the shock absorber. Use a drive socket #16. Use a torque wrench. Tighten it to 70 Nm torque.



26 Remove the support from under the arm.



Replacement: shock absorbers – Mercedes W245. Tip:

- Lower the hydraulic transmission jack smoothly, without jerks, to avoid damaging assemblies and mechanisms.

27 Treat the shock absorber fasteners. Use copper grease.

28 Treat the surface where the brake disc contacts the wheel rim. Use copper grease.



29 Clean the brake disk surface. Use a brake cleaner.



Replacement: shock absorbers – Mercedes W245. AUTODOC recommends:

- After applying the spray, wait a few minutes.

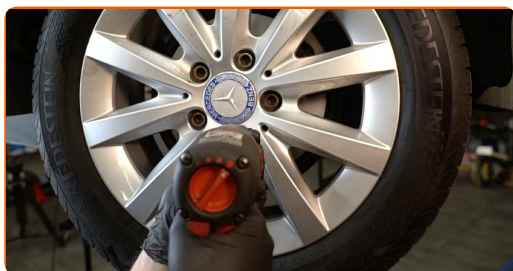
30 Install the wheel.



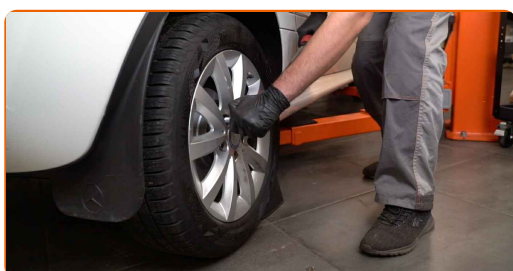
AUTODOC recommends:

- Important! Hold the wheel while screwing in the fastening bolts. Mercedes W245

31 Screw in the wheel bolts. Use wheel impact socket #H12.



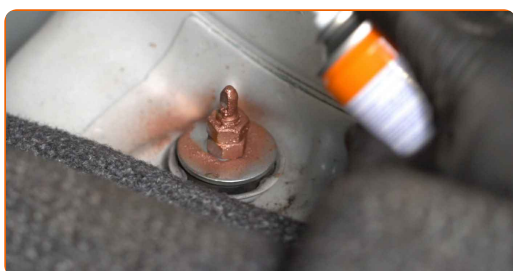
32 Lower the car and working in a cross order, tighten the wheel bolts. Use wheel impact socket #H12. Use a torque wrench. Tighten it to 130 Nm torque.



33 Tighten the top shock absorber fastening. Use a drive socket #17. Use a shock absorber socket DD#6. Use a torque wrench. Tighten it to 20 Nm torque.



34 Treat the shock absorber fasteners. Use copper grease.



35 Install the protective shock absorber mounting cap.



36 Attach the side lining of the boot.

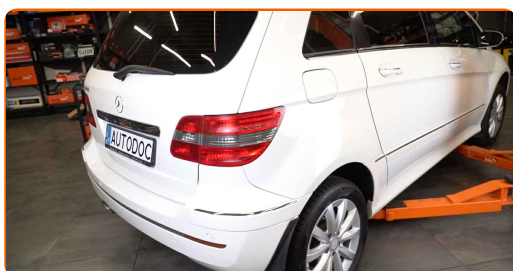


37 Install the clips of the boot side lining.



38 Close the lid of the luggage compartment.

39 Remove the jacks and chocks.



WELL DONE! 

VIEW MORE TUTORIALS

AUTODOC – TOP QUALITY AND AFFORDABLE CAR PARTS ONLINE

AUTODOC MOBILE APP: GREAT DEALS AND CONVENIENT SHOPPING



+ AUTODOC

GET IT ON  **Google Play**

 **Download on the App Store**

Download

A GREAT SELECTION OF SPARE PARTS FOR YOUR CAR

BUY SPARE PARTS FOR MERCEDES

SHOCK ABSORBERS: A WIDE SELECTION

CHOOSE CAR PARTS FOR MERCEDES W245

SHOCK ABSORBERS FOR MERCEDES: BUY NOW

SHOCK ABSORBERS FOR MERCEDES W245: THE BEST DEALS & OFFERS

DISCLAIMER:

The document contains only general recommendations that may be useful for you when you perform repair or replacement work. AUTODOC shall not be liable for any loss, injury, damage of property occurring in the repair or replacement process due to incorrect use or misinterpretation of the provided information.

AUTODOC shall not be liable for any possible mistakes and uncertainties in this guide. The information provided is for information purposes only and cannot replace advice from specialists.

AUTODOC shall not be liable for incorrect or hazardous usage of equipment, tools and car parts. AUTODOC strongly recommends to be careful and observe the safety rules when performing repair or replacement works. Remember: usage of low quality auto parts does not guarantee you the appropriate level of road safety.

© Copyright 2023 – All the contents of this website, in particular texts, photographs and graphics, are protected by copyright. All rights, including reproduction, publication, editing and translation rights, are reserved by AUTODOC SE.