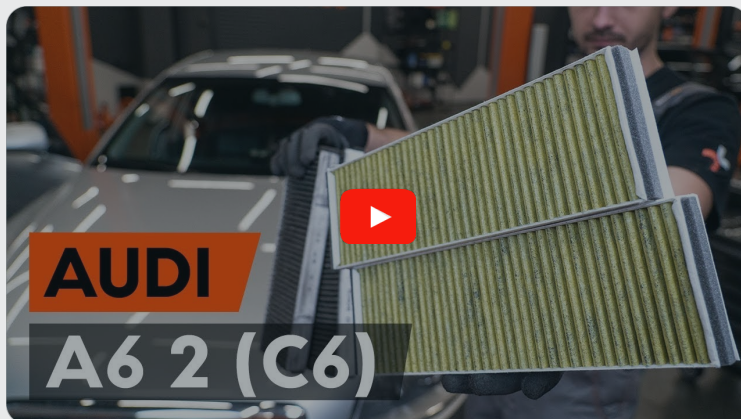




How to change pollen filter on **AUDI R8 Spyder (427, 429)** – replacement guide

## SIMILAR VIDEO TUTORIAL



This video shows the replacement procedure of a similar car part on another vehicle

### Important!

This replacement procedure can be used for:

AUDI R8 Spyder (427, 429) 5.2 FSI quattro, AUDI R8 Spyder (427, 429) 4.2 FSI quattro,  
AUDI R8 Spyder (427, 429) 5.2 FSI

The steps may slightly vary depending on the car design.

This tutorial was created based on the replacement procedure for a similar car part on: AUDI A6 Saloon (4F2, C6) 2.0 TDI

REPLACEMENT: POLLEN FILTER – AUDI R8 SPYDER  
(427, 429). TOOLS YOU NEED:



• Drive socket # 8

• Ratchet wrench

[Buy tools](#)

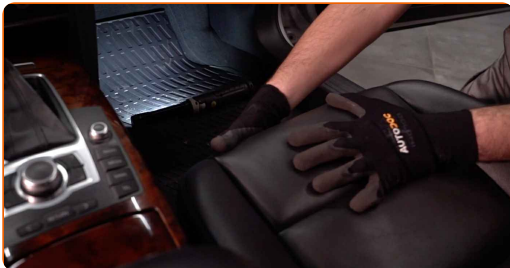
Replacement: pollen filter – AUDI R8 Spyder (427, 429). AUTODOC experts recommend:

- Replace the cabin filter at least once every six months, in early spring and autumn seasons.
- Follow the terms, recommendations and requirements of the part operation provided by the manufacturer.
- If the air flow into the cabin has sharply reduced, replace the filter before a scheduled maintenance.
- Please note: all work on the car – AUDI R8 Spyder (427, 429) – should be done with the engine switched off.

## CARRY OUT REPLACEMENT IN THE FOLLOWING ORDER:

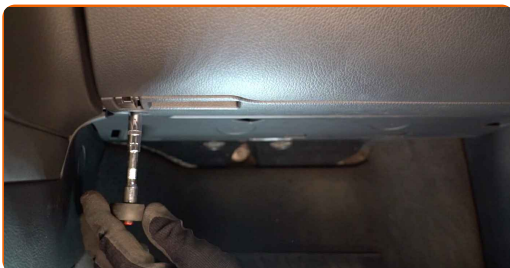
1

Move the passenger seat fully backwards.

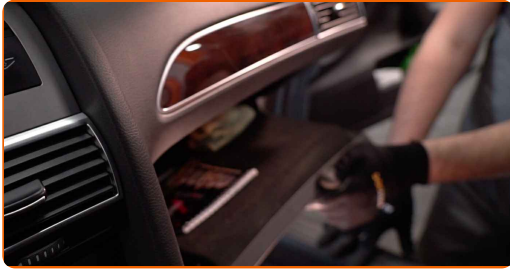


2

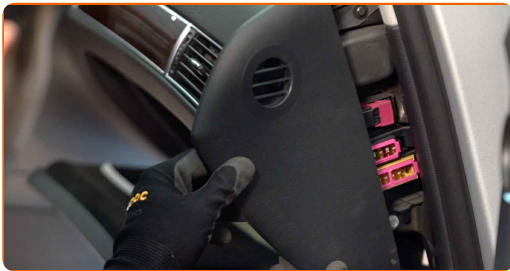
Unscrew the glove box fastening screws. Use a drive socket #8. Use a ratchet wrench.



**3** Open the glove box.



**4** Pry up, carefully release from the fasteners and remove the side trim panel on the passenger side.



**5** Unscrew the glove box fastening screws. Use a drive socket #8. Use a ratchet wrench.



**6** Remove the glovebox.



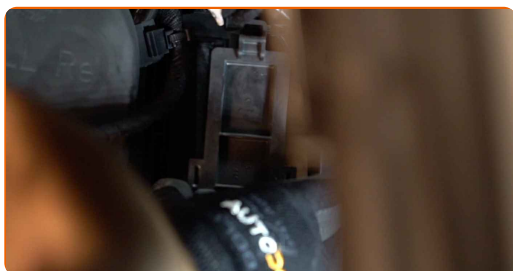
Replacement: pollen filter – AUDI R8 Spyder (427, 429). Professionals recommend:

- Be careful to avoid damaging the glove compartment fasteners.

**7** Unplug the glove box connector.



**8** Remove the cabin filter housing cover.



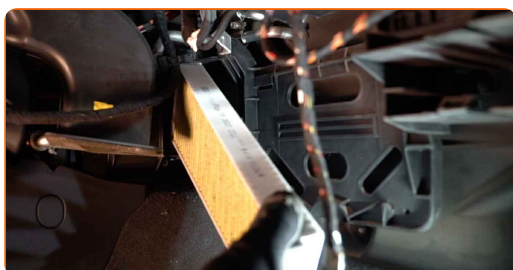
**9** Remove the cabin filters.



Replacement: pollen filter – AUDI R8 Spyder (427, 429). Tip from AUTODOC:

- Do not attempt to clean and reuse the filter - it will affect the quality of air cleaning inside the car.

**10** Install the cabin filters.



**AUTODOC recommends:**

- Replacement: pollen filter – AUDI R8 Spyder (427, 429). Be sure to position the filtering element correctly. Avoid misalignment.
- Follow the air flow direction arrow on the filter.
- AUDI R8 Spyder (427, 429) – It's important to only use high-quality filters.

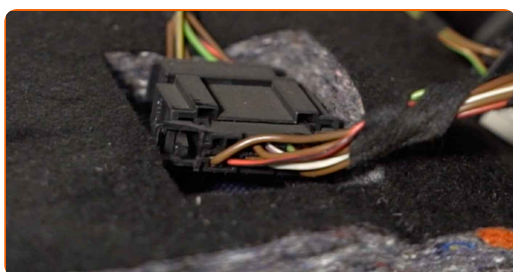
**11**

Reinstall the cabin filter housing cover. Make sure you hear a click indicating that it is locked in place.



**12**

Plug in the glove box connector.



**13**

Install the glove box.



14

Screw the glove box fastening screws. Use a drive socket #8. Use a ratchet wrench.



15

Install the side trim panel. Position the part using the guides and lock the fasteners.



**AUTODOC recommends:**

- Replacement: pollen filter – AUDI R8 Spyder (427, 429). Do not use excessive force during installation. This may damage the fasteners.

16

Close the glove box.





17

Return the passenger seat to its initial position.



18

Switch on the ignition.

19

Switch on the air conditioning system. This is necessary in order to make sure that the component operates properly.

20

Switch off the ignition.

**WELL DONE!** 

[VIEW MORE TUTORIALS](#)

# AUTODOC – TOP QUALITY AND AFFORDABLE CAR PARTS ONLINE

**AUTODOC MOBILE APP: GREAT DEALS AND CONVENIENT SHOPPING**



**+ AUTODOC**

GET IT ON  
 **Google Play**

Download on the  
 **App Store**

**Download**

**A GREAT SELECTION OF SPARE PARTS FOR YOUR CAR**

**POLLEN FILTER: A WIDE SELECTION**

## **DISCLAIMER:**

The document contains only general recommendations that may be useful for you when you perform repair or replacement work. AUTODOC shall not be liable for any loss, injury, damage of property occurring in the repair or replacement process due to incorrect use or misinterpretation of the provided information.

AUTODOC shall not be liable for any possible mistakes and uncertainties in this guide. The information provided is for information purposes only and cannot replace advice from specialists.

AUTODOC shall not be liable for incorrect or hazardous usage of equipment, tools and car parts. AUTODOC strongly recommends to be careful and observe the safety rules when performing repair or replacement works. Remember: usage of low quality auto parts does not guarantee you the appropriate level of road safety.

© Copyright 2023 – All the contents of this website, in particular texts, photographs and graphics, are protected by copyright. All rights, including reproduction, publication, editing and translation rights, are reserved by AUTODOC GmbH.