



How to change rear
wheel bearing on **AUDI**
A6 Avant (4F5, C6) –
replacement guide

SIMILAR VIDEO TUTORIAL



This video shows the replacement procedure of a similar car part on another vehicle

Important!

This replacement procedure can be used for:

AUDI A6 Avant (4F5, C6) 2.0 TDI, AUDI A6 Avant (4F5, C6) 2.7 TDI, AUDI A6 Avant (4F5, C6) 3.2 FSI, AUDI A6 Avant (4F5, C6) 2.4, AUDI A6 Avant (4F5, C6) 2.0 TFSI, AUDI A6 Avant (4F5, C6) 2.8 FSI, AUDI A6 Avant (4F5, C6) 3.0

The steps may slightly vary depending on the car design.

This tutorial was created based on the replacement procedure for a similar car part on: AUDI A6 Saloon (4F2, C6) 2.0 TDI

REPLACEMENT: WHEEL BEARING – AUDI A6 AVANT (4F5, C6). LIST OF THE TOOLS YOU'LL NEED:



- Wire brush
- WD-40 spray
- Brake cleaner
- Copper grease
- Combination spanner #13
- Combination spanner #15
- Combination spanner #17
- Torx bit T20
- XZN socket bit # 12
- Drive socket # 13
- Drive socket # 17
- Wheel impact socket #17
- Ratchet wrench
- Torque wrench
- Tap wrench
- Phillips screwdriver
- Impact screwdriver
- Hammer
- Crow bar
- Wheel chock

Buy tools

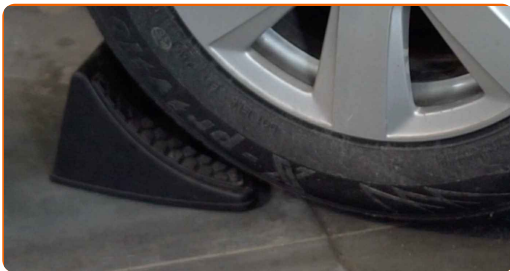
Replacement: wheel bearing – AUDI A6 Avant (4F5, C6). AUTODOC experts recommend:

- Do not re-use the bearing assembly of your AUDI A6 Avant (4F5, C6) car.
- The wheel hub bearing replacement procedure is identical for both wheels on the same axle.
- All work should be done with the engine stopped.

REPLACEMENT: WHEEL BEARING – AUDI A6 AVANT (4F5, C6). USE THE FOLLOWING PROCEDURE:

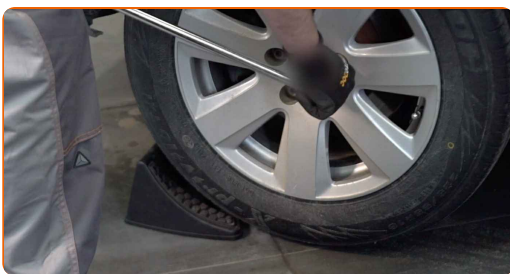
1

Secure the wheels with chocks.



2

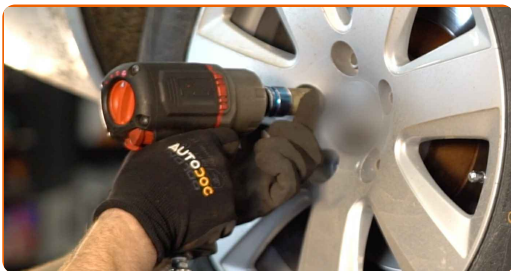
Loosen the wheel mounting bolts. Use wheel impact socket #17.



3

Raise the rear of the car and secure on supports.

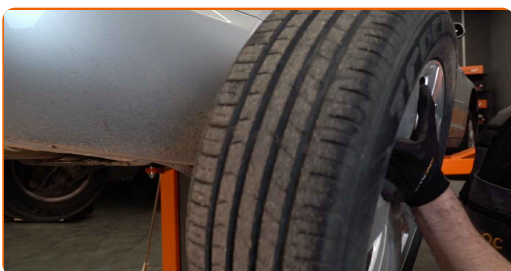
4 Unscrew the wheel bolts.



AUTODOC recommends:

- Important! Hold the wheel while unscrewing the fastening bolts. AUDI A6 Avant (4F5, C6)

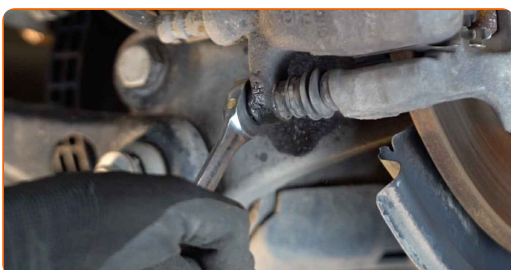
5 Remove the wheel.



6 Clean the brake caliper fasteners. Use a wire brush. Use WD-40 spray.

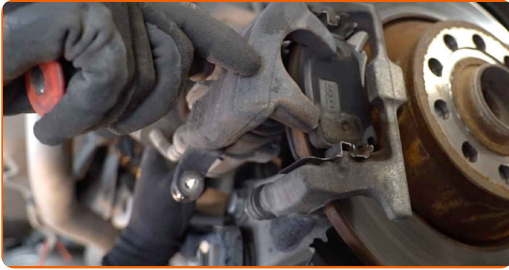


7 Unscrew the brake caliper fastening. Use a combination spanner #13. Use a combination spanner #15.



8

Remove the brake caliper. Use a crowbar.

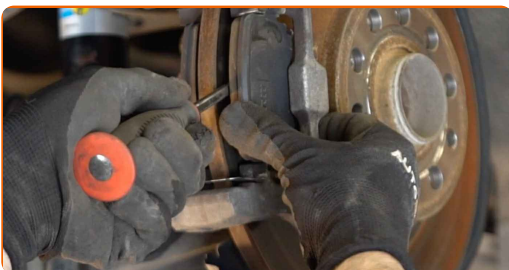


Replacement: wheel bearing – AUDI A6 Avant (4F5, C6). AUTODOC recommends:

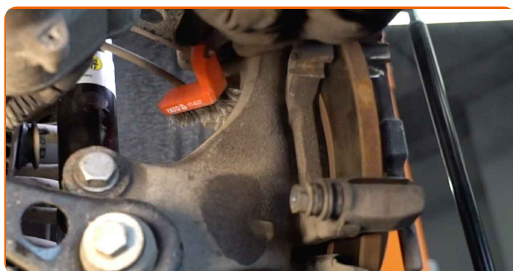
- Tie the caliper to the suspension or to the body with a wire without disconnecting from the brake hose to prevent depressurization of the brake system.
- Make sure that the brake caliper is not hanging on the brake hose.
- Don't press the brake pedal after the brake caliper has been removed. As a result, the piston can fall out from the brake cylinder, and brake fluid leakage and depressurization of the system may occur.
- Check the brake caliper bracket, brake caliper guide pins and boots. Clean them. Replace, if necessary.

9

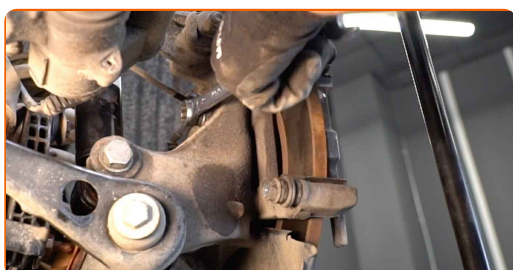
Remove the brake pads. Use a crowbar.



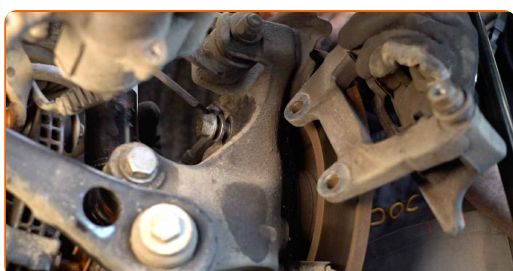
10 Clean the brake caliper bracket fasteners. Use a wire brush. Use WD-40 spray.



11 Unscrew the caliper bracket fastening. Use a combination spanner #17.

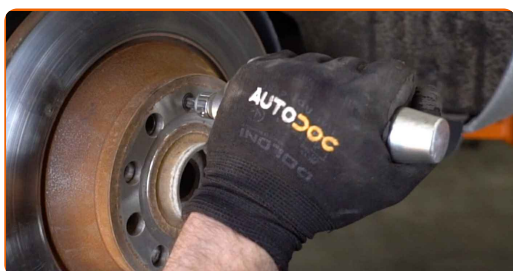


12 Remove the caliper bracket.

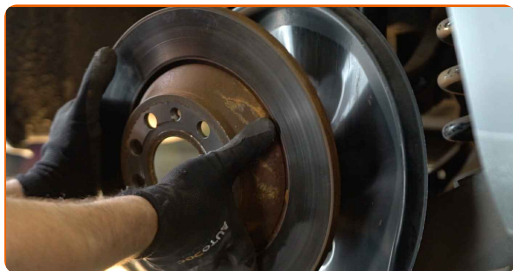


13 Clean the brake disc fasteners. Use a wire brush. Use WD-40 spray.

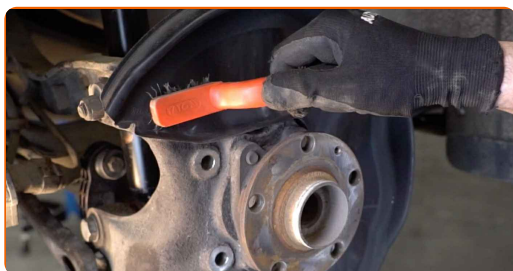
14 Unscrew the brake disc fastening. Use a Phillips screwdriver. Use an impact screwdriver.



15 Remove the brake disc.



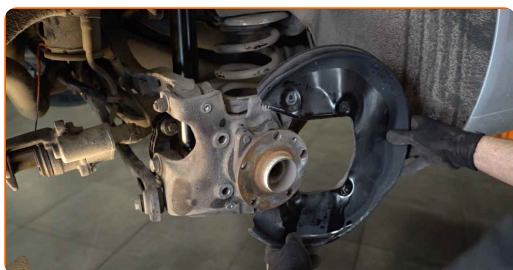
16 Clean the fasteners of the brake disc cover. Use a wire brush. Use WD-40 spray.



17 Unscrew the fasteners of the brake disc cover. Use Torx T20.

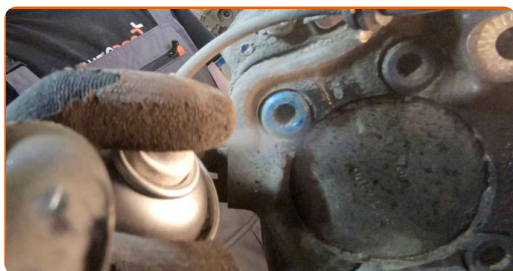


18 Remove the brake disc cover.



19

Clean the fasteners of the wheel hub bearing. Use a wire brush. Use WD-40 spray.



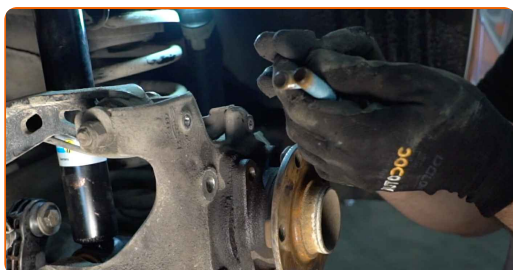
20

Unscrew the hub bearing mounting. Use XZN #12. Use a ratchet wrench. Use a tap wrench.



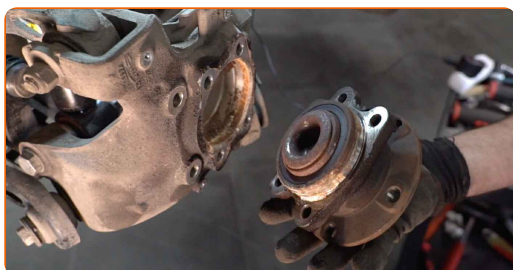
21

Remove the fastening bolts.



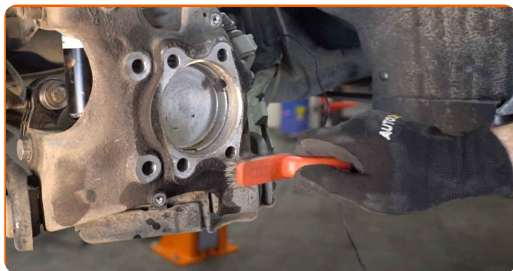
22

Remove the hub and the bearing together, since they are a sealed unit. Use a hammer.



23

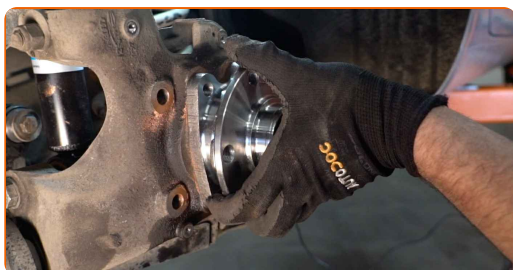
Clean the hub bearing mounting seat. Use a wire brush. Use WD-40 spray.

**24**

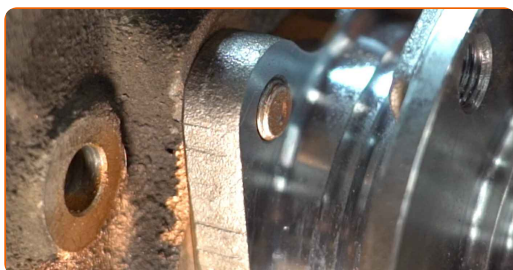
Apply special grease to the bearing assembly mounting seat. Use copper grease.

**25**

Install the new wheel hub with a bearing.

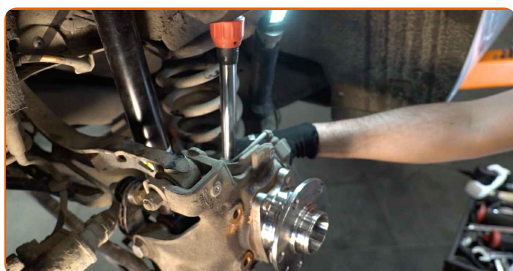
**26**

Install the fastening bolts.



27

Tighten the fastener of the wheel hub bearing. Use XZN #12. Use a torque wrench. Tighten it to 80 Nm torque.+90°



Replacement: wheel bearing – AUDI A6 Avant (4F5, C6). Professionals recommend:

- Important! Be sure to use new fasteners.
- The wheel bearing unit must not tilt on the axle pin.

28

Install the brake disc cover.



29

Screw in the fasteners of the brake disc cover. Use Torx T20.



30 Treat the hub where it contacts the brake disk. Use copper grease.



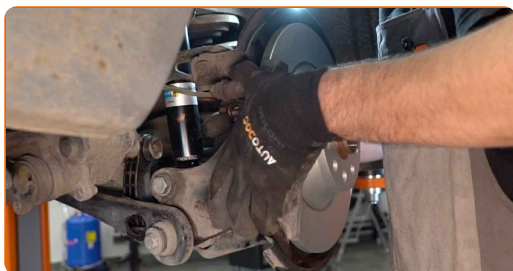
31 Install the brake disc.



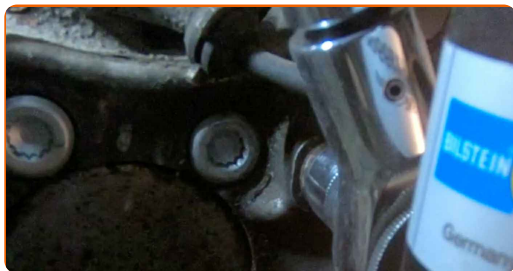
32 Tighten the brake disc fastening. Use a Phillips screwdriver. Use an impact screwdriver. Use a torque wrench. Tighten it to 5 Nm torque.



33 Install the brake caliper bracket.



34 Tighten the brake caliper bracket. Use a drive socket #17. Use a torque wrench. Tighten it to 85 nm torque.



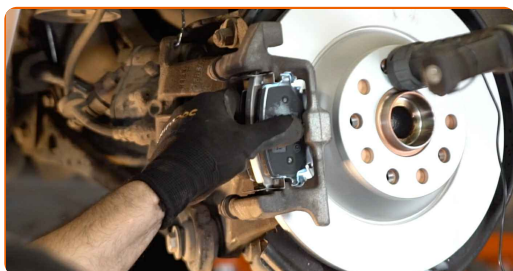
35 Clean the brake caliper bracket from dirt and dust. Use a wire brush. Use a brake cleaner.



Replacement: wheel bearing – AUDI A6 Avant (4F5, C6). Tip from AUTODOC:

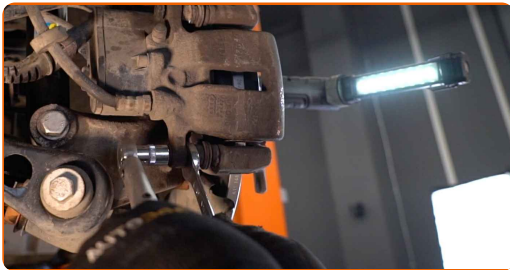
- After applying the spray, wait a few minutes.

36 Install the brake pads.



37

Install the brake caliper and fix it. Use a combination spanner #13. Use a drive socket #13. Use a torque wrench. Tighten it to 35 Nm torque.



38

Treat the surface where the brake disc contacts the wheel rim. Use copper grease.



39

Clean the brake disk surface. Use a brake cleaner.



AUTODOC recommends:

- Replacement: wheel bearing – AUDI A6 Avant (4F5, C6). After applying the spray, wait a few minutes.

40

Install the wheel.

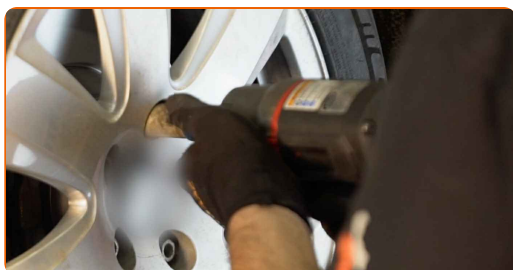


Replacement: wheel bearing – AUDI A6 Avant (4F5, C6). Tip from AUTODOC experts:

- To avoid injury, hold up the wheel when screwing in the fastening bolts.

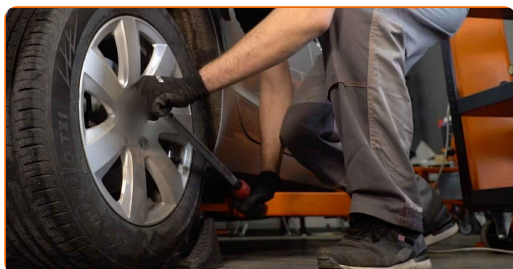
41

Screw in the wheel bolts. Use wheel impact socket #17.



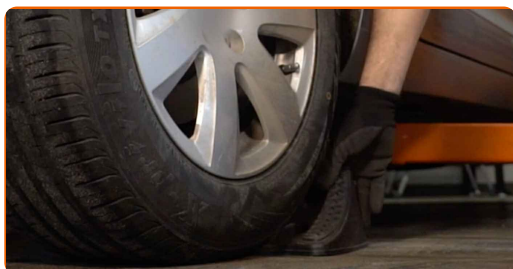
42

Lower the car and working in a cross order, tighten the wheel bolts. Use a torque wrench. Tighten it to 120 Nm torque.



43

Remove the jacks and chocks.



WELL DONE! 

[VIEW MORE TUTORIALS](#)

AUTODOC – TOP QUALITY AND AFFORDABLE CAR PARTS ONLINE

AUTODOC MOBILE APP: GREAT DEALS AND CONVENIENT SHOPPING



+ AUTODOC

GET IT ON
Google Play

Download on the
App Store

Download

A GREAT SELECTION OF SPARE PARTS FOR YOUR CAR

WHEEL BEARING: A WIDE SELECTION

DISCLAIMER:

The document contains only general recommendations that may be useful for you when you perform repair or replacement work. AUTODOC shall not be liable for any loss, injury, damage of property occurring in the repair or replacement process due to incorrect use or misinterpretation of the provided information.

AUTODOC shall not be liable for any possible mistakes and uncertainties in this guide. The information provided is for information purposes only and cannot replace advice from specialists.

AUTODOC shall not be liable for incorrect or hazardous usage of equipment, tools and car parts. AUTODOC strongly recommends to be careful and observe the safety rules when performing repair or replacement works. Remember: usage of low quality auto parts does not guarantee you the appropriate level of road safety.

© Copyright 2023 – All the contents of this website, in particular texts, photographs and graphics, are protected by copyright. All rights, including reproduction, publication, editing and translation rights, are reserved by AUTODOC GmbH.