



How to change lambda
sensor on **AUDI A4**
Saloon (8D2, B5) –
replacement guide

SIMILAR VIDEO TUTORIAL



This video shows the replacement procedure of a similar car part on another vehicle

Important!

This replacement procedure can be used for:

AUDI A4 Saloon (8D2, B5) 1.8 T, AUDI A4 Saloon (8D2, B5) 1.8 T quattro

The steps may slightly vary depending on the car design.

This tutorial was created based on the replacement procedure for a similar car part on: SEAT Leon Hatchback (1M1) 1.8 20V

REPLACEMENT: LAMBDA SENSOR – AUDI A4 SALOON (8D2, B5). LIST OF THE TOOLS YOU'LL NEED:



- Wire brush
- WD-40 spray
- Electronic spray
- High-temperature ceramic grease
- Torque wrench
- Drive socket # 10
- 22-mm oxygen sensor socket
- Thread tap
- Ratchet wrench

Buy tools

Replacement: lambda sensor – AUDI A4 Saloon (8D2, B5). AUTODOC experts recommend:

- After replacing the oxygen sensor, clear the trouble code from the electronic control unit and let the ECU adapt itself to the new sensor.
- Before getting down to work, start the engine and let it warm up to operating temperature.
- Please note: all work on the car – AUDI A4 Saloon (8D2, B5) – should be done with the engine switched off.

CARRY OUT REPLACEMENT IN THE FOLLOWING ORDER:

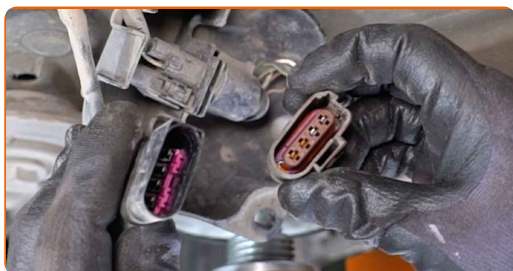
- 1 Lift the car using a jack or place it over an inspection pit.
- 2 Unscrew the fasteners of the oxygen sensor housing cover. Use a drive socket #10. Use a ratchet wrench.



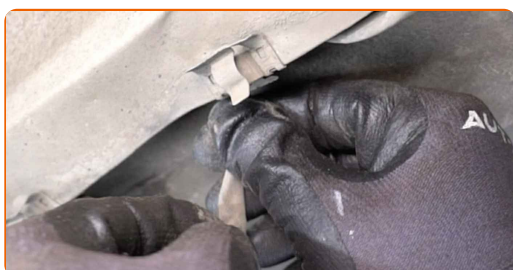
- 3 Remove the oxygen sensor housing cover.



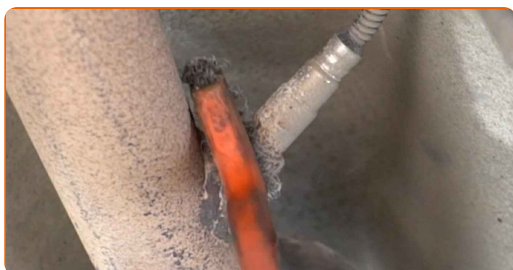
4 Detach the oxygen sensor connector.



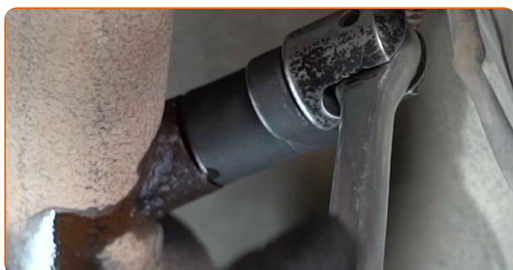
5 Disconnect the oxygen sensor wiring.



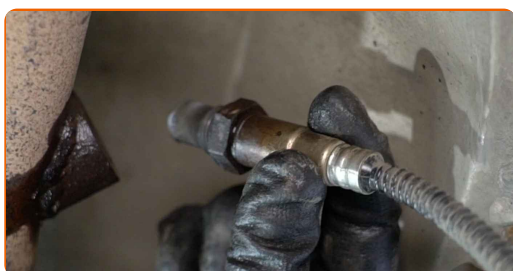
6 Clean the oxygen sensor fastener. Use a wire brush. Use WD-40 spray.



7 Unscrew the oxygen sensor fastener. Use a 22-mm oxygen sensor socket. Use a ratchet wrench.



8 Remove the oxygen sensor.

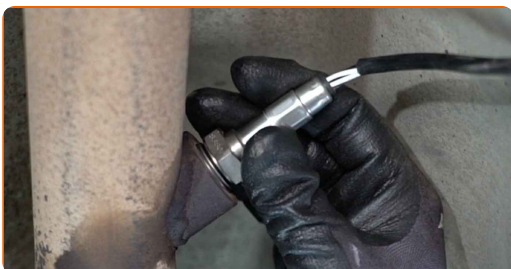


9 Clean the thread to prepare it for installing a new oxygen sensor. Use a thread tap. Use a ratchet wrench.

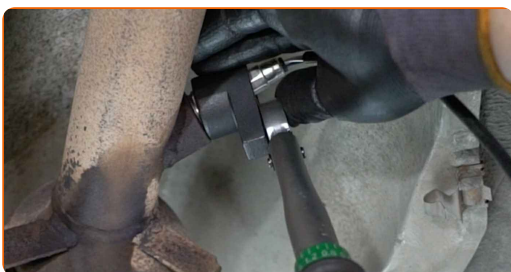


10 Treat the oxygen sensor. Use high-temperature ceramic grease.

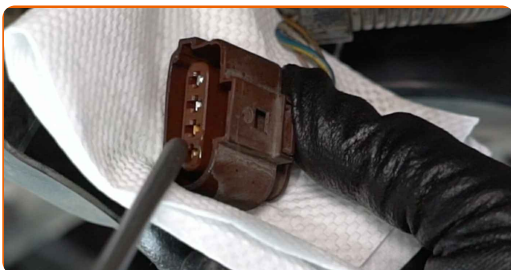
11 Install the new oxygen sensor.



12 Tighten the oxygen sensor fastener. Use a 22-mm oxygen sensor socket. Use a torque wrench. Tighten it to 46 Nm torque.



13 Treat the oxygen sensor connector. Use dielectric grease.



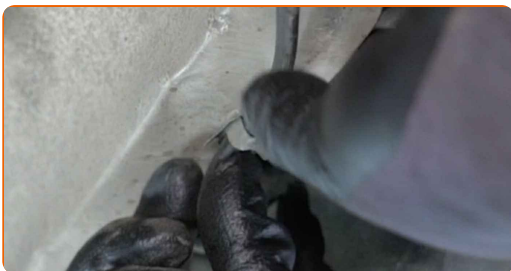
14 Attach the oxygen sensor connector.



15 Install the oxygen sensor housing cover.



16 Connect the oxygen sensor wiring.



17 Screw in the fasteners of the oxygen sensor housing cover. Use a drive socket #10. Use a ratchet wrench.



18 Lower the car.

WELL DONE! 

[VIEW MORE TUTORIALS](#)

AUTODOC – TOP QUALITY AND AFFORDABLE CAR PARTS ONLINE

AUTODOC MOBILE APP: GREAT DEALS AND CONVENIENT SHOPPING



+ AUTODOC

GET IT ON
 **Google Play**

 **Download on the App Store**

Download

A GREAT SELECTION OF SPARE PARTS FOR YOUR CAR

LAMBDA SENSOR: A WIDE SELECTION

DISCLAIMER:

The document contains only general recommendations that may be useful for you when you perform repair or replacement work. AUTODOC shall not be liable for any loss, injury, damage of property occurring in the repair or replacement process due to incorrect use or misinterpretation of the provided information.

AUTODOC shall not be liable for any possible mistakes and uncertainties in this guide. The information provided is for information purposes only and cannot replace advice from specialists.

AUTODOC shall not be liable for incorrect or hazardous usage of equipment, tools and car parts. AUTODOC strongly recommends to be careful and observe the safety rules when performing repair or replacement works. Remember: usage of low quality auto parts does not guarantee you the appropriate level of road safety.

© Copyright 2023 – All the contents of this website, in particular texts, photographs and graphics, are protected by copyright. All rights, including reproduction, publication, editing and translation rights, are reserved by AUTODOC SE.