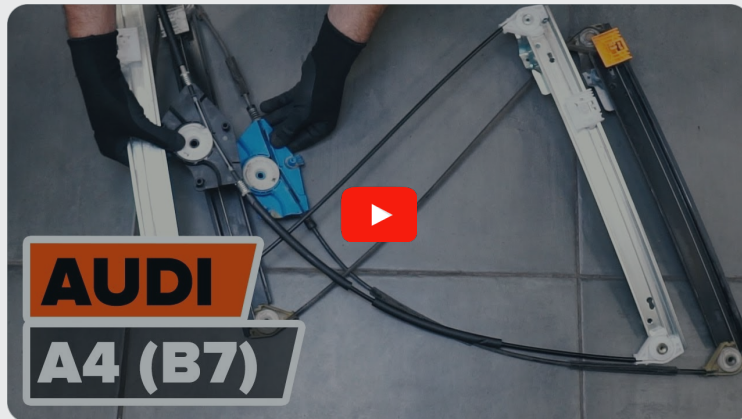




How to change front
window regulator on
AUDI A4 B6 Avant (8E5)
– replacement guide

SIMILAR VIDEO TUTORIAL



This video shows the replacement procedure of a similar car part on another vehicle

Important!

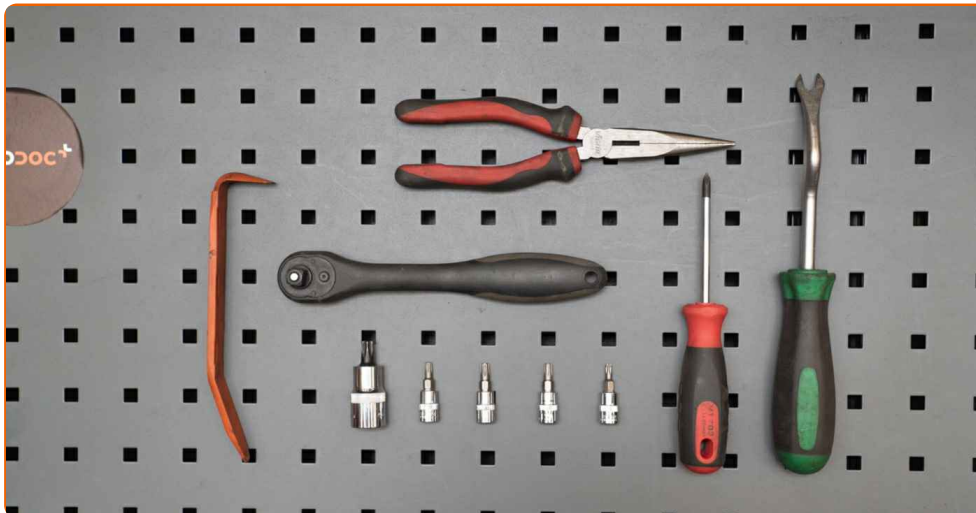
This replacement procedure can be used for:

AUDI A4 B6 Avant (8E5) 1.6, AUDI A4 B6 Avant (8E5) 2.0, AUDI A4 B6 Avant (8E5) 1.8 T, AUDI A4 B6 Avant (8E5) 3.0, AUDI A4 B6 Avant (8E5) 1.9 TDI, AUDI A4 B6 Avant (8E5) 2.4, AUDI A4 B6 Avant (8E5) 2.5 TDI quattro, AUDI A4 B6 Avant (8E5) 2.5 TDI, AUDI A4 B6 Avant (8E5) 1.8 T quattro, AUDI A4 B6 Avant (8E5) 3.0 quattro, AUDI A4 B6 Avant (8E5) 1.9 TDI quattro, AUDI A4 B6 Avant (8E5) 2.0 FSI, AUDI A4 B6 Avant (8E5) S4 quattro

The steps may slightly vary depending on the car design.

This tutorial was created based on the replacement procedure for a similar car part on: AUDI A4 B7 Saloon (8EC) 2.0 TFSI

REPLACEMENT: WINDOW REGULATOR – AUDI A4 B6
AVANT (8E5). TOOLS YOU MIGHT NEED:



- Torque wrench
- Drive socket # 10
- Torx bit T20
- Torx bit T25
- Torx bit T27
- Torx bit T30
- Torx bit T45
- Ratchet wrench
- Phillips screwdriver
- Round-nose pliers
- Clip removal tool
- Plastic trim tool
- Fender cover

Buy tools

Replacement: window regulator – AUDI A4 B6 Avant (8E5). AUTODOC recommends:

- Please note: all work on the car – AUDI A4 B6 Avant (8E5) saloon – should be done with the engine switched off.

REPLACEMENT: WINDOW REGULATOR – AUDI A4 B6 AVANT (8E5). USE THE FOLLOWING PROCEDURE:

1 Open the hood.

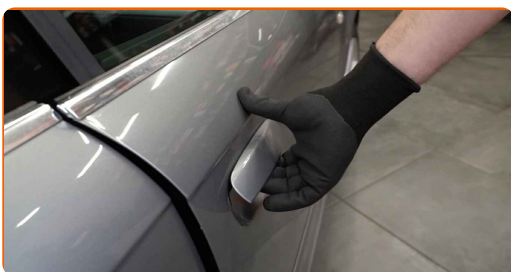
2 Use a fender protection cover to prevent damaging paintwork and plastic parts of the car.

3 Unscrew the fasteners of the car battery terminals. Use a drive socket #10. Use a ratchet wrench.



4 Remove the battery terminals.

5 Open the car door.



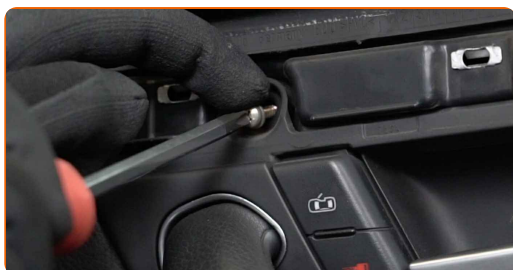
6 Remove the door card trim panel. Use a plastic trim tool.



7 Unscrew the upper fasteners of the door card. Use a Phillips screwdriver.



8 Remove the door handle screw. Use a Phillips screwdriver.

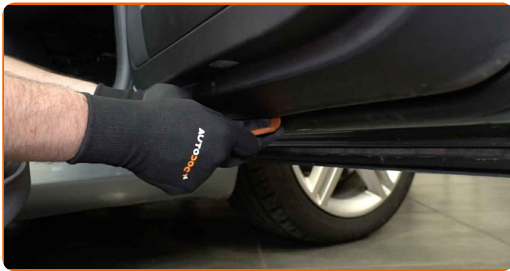


9 Unscrew the lower fasteners of the door card. Use a Phillips screwdriver.



10

Detach the door card. Use a plastic trim tool.



AUTODOC recommends:

- Replacement: window regulator – AUDI A4 B6 Avant (8E5). Do not use excessive force when removing the part as this may damage it.

11

Detach the door lock actuator cable.



12

Detach the speaker connector.

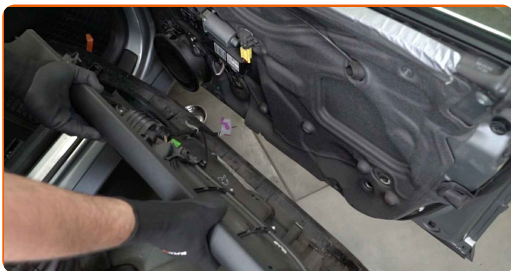


13

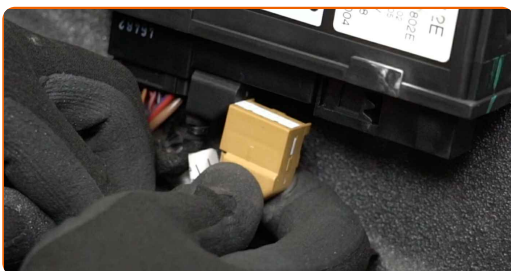
Detach the power window connectors from the control unit. Use a plastic trim tool.



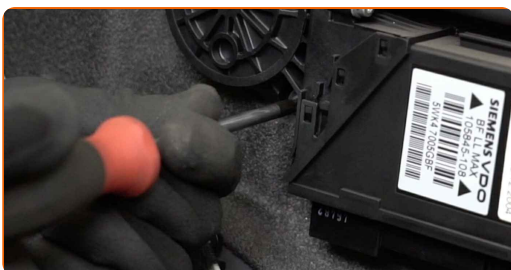
14 Remove the door card.



15 Detach the power window connector from the door panel.



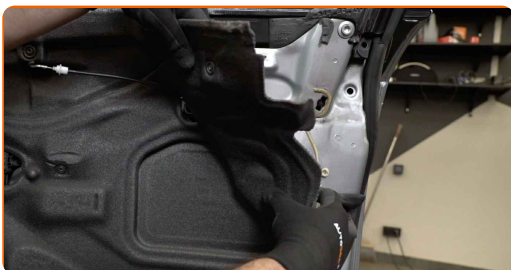
16 Unscrew the fasteners of the power window motor. Use Torx T27. Use a ratchet wrench.



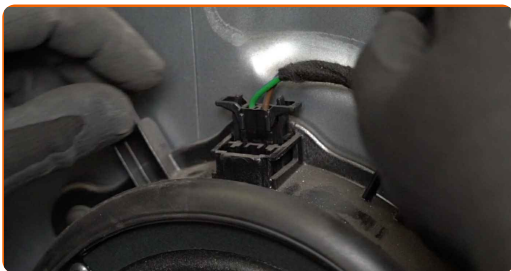
17 Remove the power window motor.



18 Detach the door panel sound insulation.



19 Detach the speaker connector.



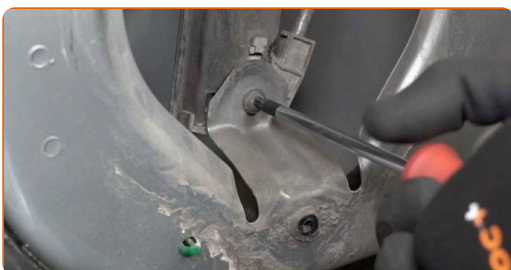
20 Unscrew the fasteners of the speakers. Use Torx T25. Use a ratchet wrench.



21 Remove the speakers.



22 Unscrew the lower fasteners of the window regulator mechanism. Use Torx T25. Use a ratchet wrench.



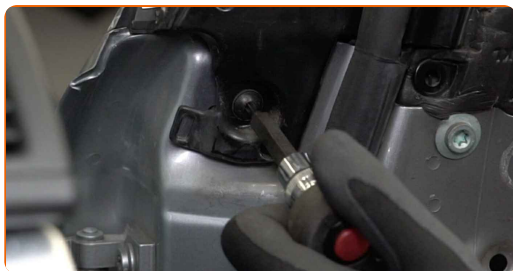
23 Squeeze the clips and detach the window regulator drive gear. Use round-nose pliers.



24 Detach the side mirror trim panel. Use a plastic trim tool.



25 Remove the wing mirror screws. Use Torx T30. Use a ratchet wrench.

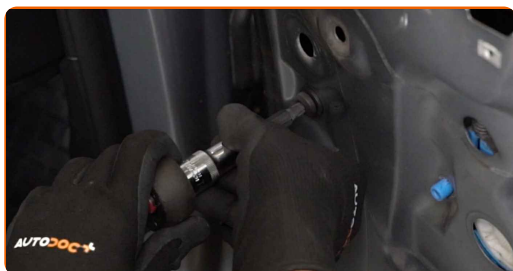


26 Remove the wing mirror.



27

Unscrew the car door frame fasteners. Use Torx T45. Use a ratchet wrench.



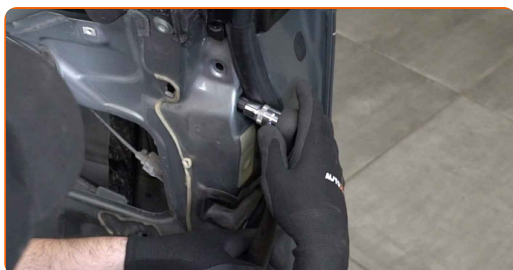
28

Remove the door frame fastener cap. Use a plastic trim tool.



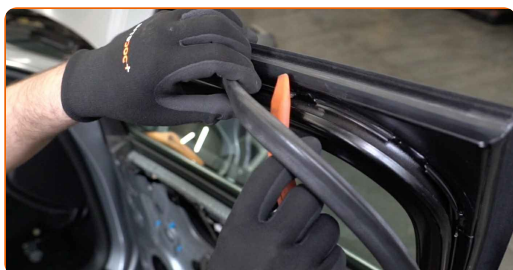
29

Unscrew the car door frame fasteners. Use Torx T45. Use a ratchet wrench.



30

Detach the door weather strip. Use a plastic trim tool.



31 Remove the glass together with the door trim frame.



Replacement: window regulator – AUDI A4 B6 Avant (8E5). Tip from AUTODOC:

- Do not apply excessive force when removing the part. Otherwise you may damage it.

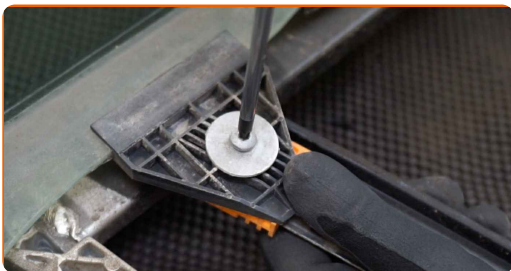
32 Disconnect the wiring of the wing mirror. Use a clip removal tool.



Replacement: window regulator – AUDI A4 B6 Avant (8E5). Tip:

- Be careful! Do not damage the wiring of the wing mirror.

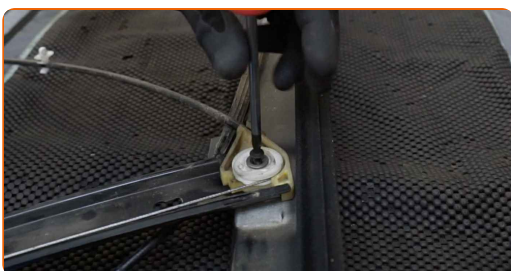
33 Unscrew the window glass fasteners. Use Torx T20. Use a ratchet wrench.



34 Turn the window regulator drive gear. This is how you release the glass from the window regulator drive. Use round-nose pliers.



35 Unscrew the fasteners of the window regulator drive gear. Use Torx T25. Use a ratchet wrench.



36 Remove the window regulator mechanism.



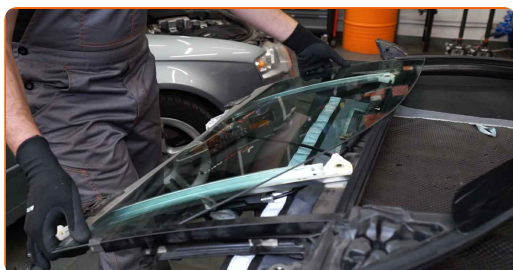
37 Install the new window regulator mechanism.



38 Screw in the fasteners of the window regulator drive gear. Use Torx T25. Use a ratchet wrench.



39 Reinstall the glass into the window regulator drive.



AUTODOC recommends:

- Replacement: window regulator – AUDI A4 B6 Avant (8E5). To avoid damaging the part during installation, do not use excessive force.

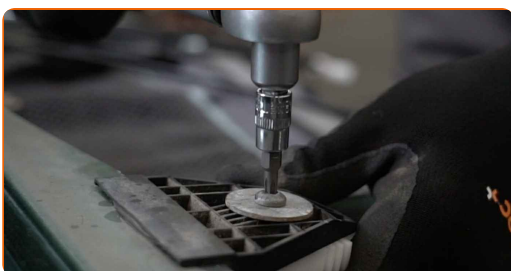
40 Screw in the window glass fasteners. Use Torx T20. Use a ratchet wrench.



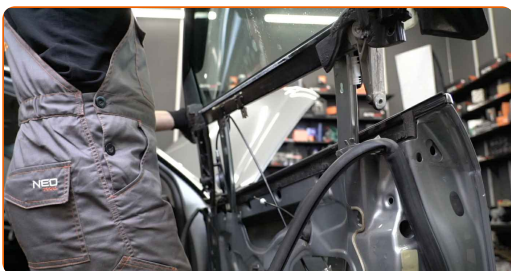
41 Turn the window regulator drive gear. This way you will return the glass to its standard position. Use round-nose pliers.



42 Tighten the window glass fasteners. Use Torx T20. Use a torque wrench. Tighten it to 11 Nm torque.

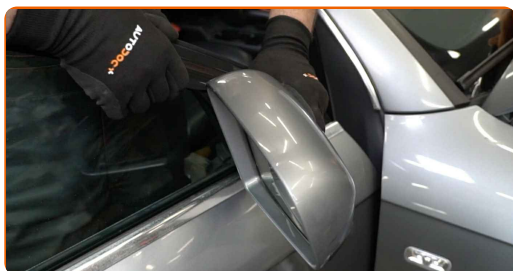


43 Install the glass together with the door trim frame.

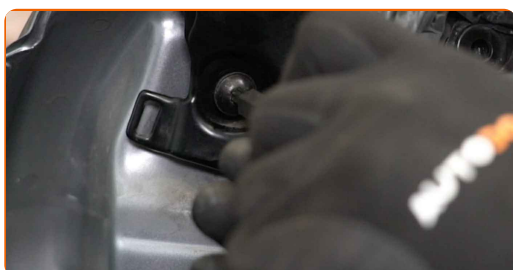


44 Connect the wiring of the wing mirror.

45 Install the side mirror.



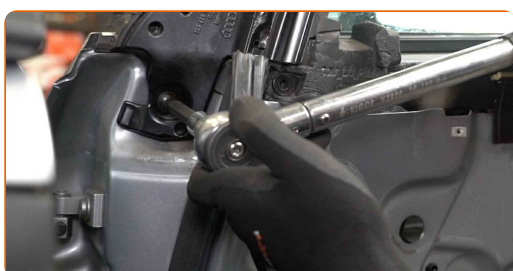
46 Screw in the side mirror fastener. Use Torx T30. Use a ratchet wrench.



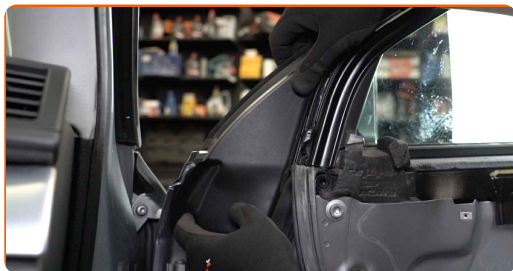
47 Screw in the door frame fasteners. Use Torx T45. Use a ratchet wrench.



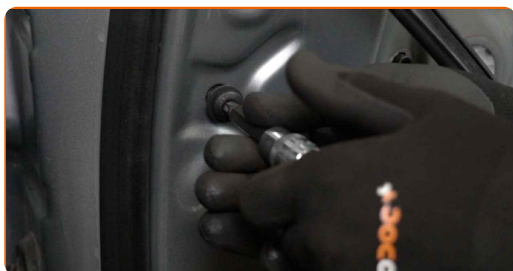
48 Tighten the screws of the wing mirror. Use Torx T30. Use a torque wrench. Tighten it to 15 Nm torque.



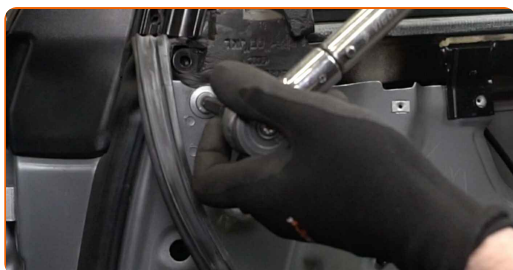
49 Attach the side mirror trim panel.



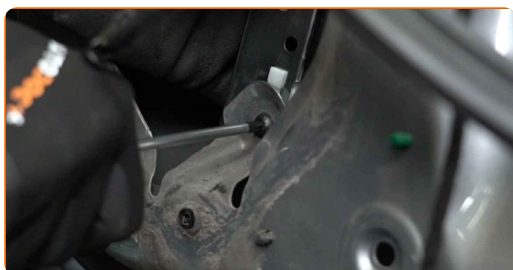
50 Screw in the door frame fasteners. Use Torx T45. Use a ratchet wrench.



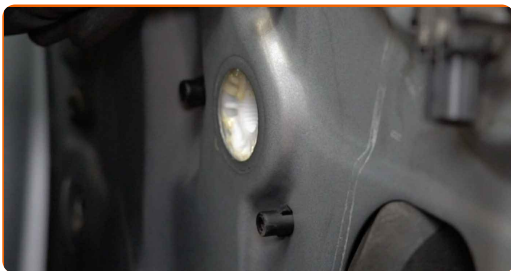
51 Tighten the door frame fasteners. Use Torx T45. Use a torque wrench. Tighten it to 35 Nm torque.



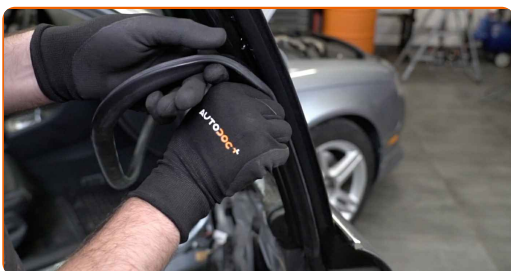
52 Screw in the lower fasteners of the window regulator mechanism. Use Torx T25. Use a ratchet wrench.



53 Attach the window regulator drive gear.



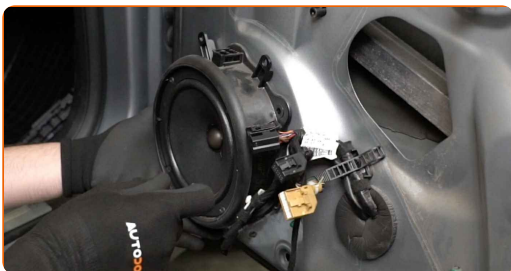
54 Attach the door weather strip.



55 Install the door frame fastener cap.



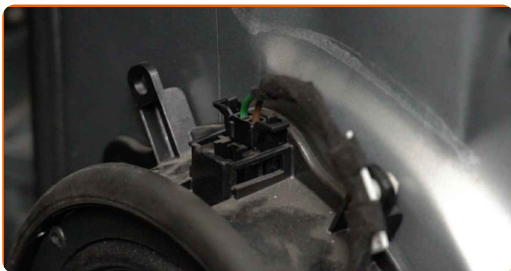
56 Reinstall the speakers.



57 Screw in the fasteners of the speakers. Use Torx T25. Use a ratchet wrench.



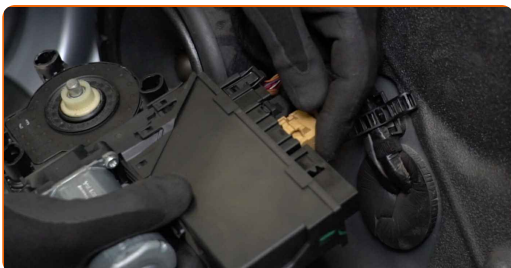
58 Attach the speaker connector.



59 Attach the door panel sound insulation.



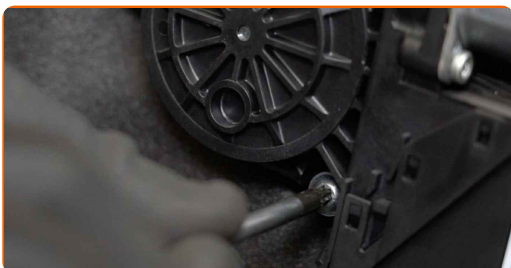
60 Attach the power window connectors to the control unit.



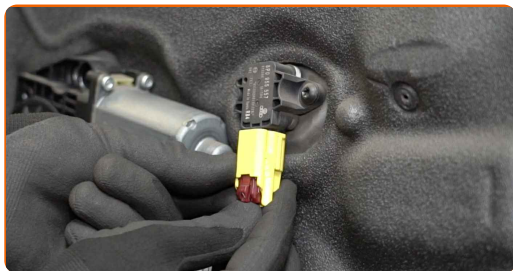
61 Install the power window motor.



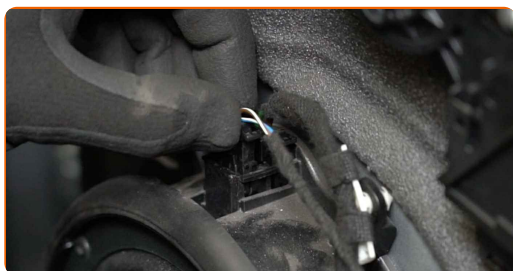
62 Screw in the power window motor fasteners. Use Torx T27. Use a ratchet wrench.



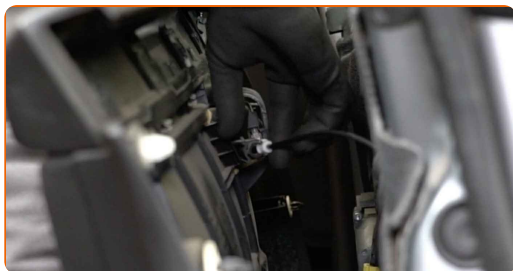
63 Attach the power window connector to the door panel.



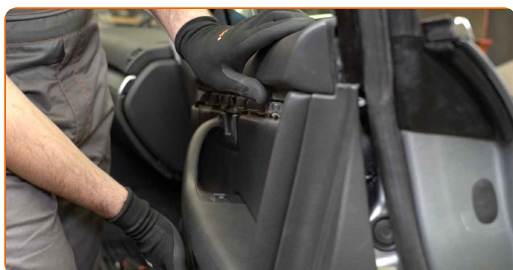
64 Attach the speaker connector.



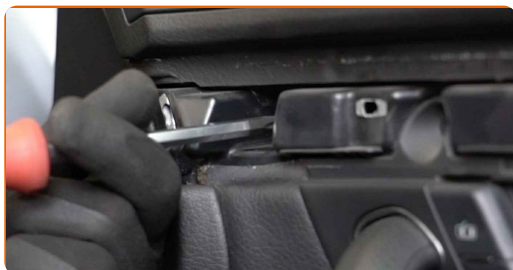
65 Attach the door lock actuator cable.



66 Reinstall the door card. Make sure you hear a click indicating that it is locked in place.



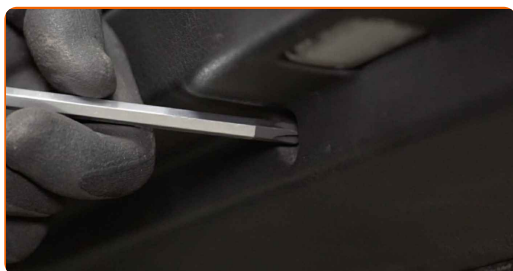
67 Screw in the upper fasteners of the door card. Use a Phillips screwdriver.



68 Screw in the door handle fastener. Use a Phillips screwdriver.



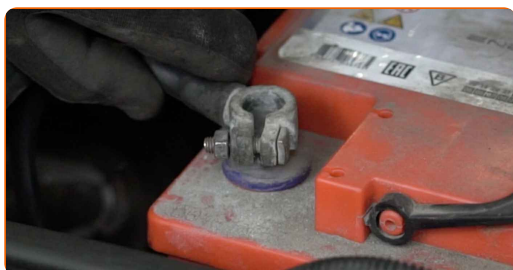
69 Screw in the lower fasteners of the door card. Use a Phillips screwdriver.



70 Install the door card trim panel.



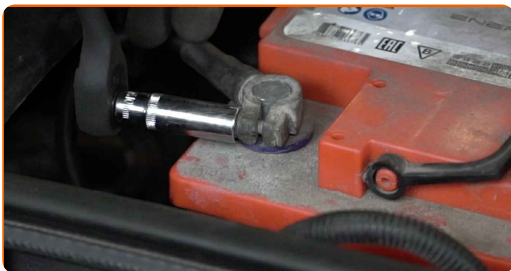
71 Attach the terminals to the battery.



Replacement: window regulator – AUDI A4 B6 Avant (8E5). AUTODOC experts recommend:

- Be careful! Do not mix up the positive and the negative terminals of the car battery.

72 Screw in the fasteners of the battery terminals. Use a drive socket #10. Use a ratchet wrench.



73 Switch on the ignition. This is necessary in order to make sure that the component operates properly.

74 Switch off the ignition.

75 Close the car door.

76 Remove the fender protection cover.

77 Close the hood.

WELL DONE! 

VIEW MORE TUTORIALS

AUTODOC – TOP QUALITY AND AFFORDABLE CAR PARTS ONLINE

AUTODOC MOBILE APP: GREAT DEALS AND CONVENIENT SHOPPING



A GREAT SELECTION OF SPARE PARTS FOR YOUR CAR

WINDOW REGULATOR: A WIDE SELECTION

DISCLAIMER:

The document contains only general recommendations that may be useful for you when you perform repair or replacement work. AUTODOC shall not be liable for any loss, injury, damage of property occurring in the repair or replacement process due to incorrect use or misinterpretation of the provided information.

AUTODOC shall not be liable for any possible mistakes and uncertainties in this guide. The information provided is for information purposes only and cannot replace advice from specialists.

AUTODOC shall not be liable for incorrect or hazardous usage of equipment, tools and car parts. AUTODOC strongly recommends to be careful and observe the safety rules when performing repair or replacement works. Remember: usage of low quality auto parts does not guarantee you the appropriate level of road safety.

© Copyright 2022 – All the contents of this website, in particular texts, photographs and graphics, are protected by copyright. All rights, including reproduction, publication, editing and translation rights, are reserved by AUTODOC GmbH.