



How to change front
lower arm on **AUDI A1
Hatchback (8X1, 8XK)** –
replacement guide

SIMILAR VIDEO TUTORIAL



This video shows the replacement procedure of a similar car part on another vehicle

Important!

This replacement procedure can be used for:

AUDI A1 Hatchback (8X1, 8XK) 1.4 TFSI, AUDI A1 Hatchback (8X1, 8XK) 1.6 TDI, AUDI A1 Hatchback (8X1, 8XK) 2.0 TDI, AUDI A1 Hatchback (8X1, 8XK) 1.2 TFSI, AUDI A1 Hatchback (8X1, 8XK) 2.0 TFSI quattro, AUDI A1 Hatchback (8X1, 8XK) S1 quattro, AUDI A1 Hatchback (8X1, 8XK) 1.4 TSI, AUDI A1 Hatchback (8X1, 8XK) 1.4 TDI, AUDI A1 Hatchback (8X1, 8XK) 1.8 TFSI, AUDI A1 Hatchback (8X1, 8XK) 1.0 TFSI

The steps may slightly vary depending on the car design.

This tutorial was created based on the replacement procedure for a similar car part on: VW Polo Saloon (602, 604, 612, 614) 1.6

REPLACEMENT: FRONT LOWER ARM – AUDI A1 HATCHBACK (8X1, 8XK). TOOLS YOU'LL NEED:



- Wire brush
- WD-40 spray
- Brake cleaner
- Copper grease
- Combination spanner #18
- Drive socket # 16
- Drive socket # 18
- Wheel impact socket #17
- Ratchet wrench
- Torque wrench
- Tap wrench
- Crow bar
- Rubber mallet
- Hydraulic transmission jack
- Wheel chock

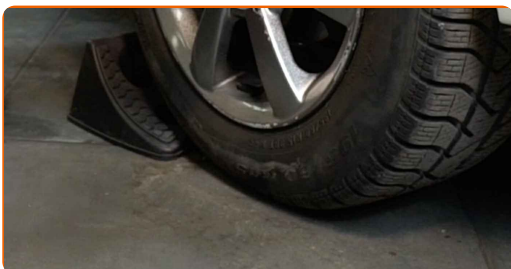
Buy tools

Replacement: front lower arm – AUDI A1 Hatchback (8X1, 8XK). Tip from AUTODOC experts:

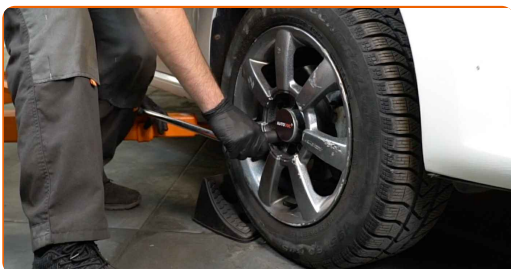
- The replacement procedure is identical for the left and right lower control arms.
- All work should be done with the engine stopped.

REPLACEMENT: FRONT LOWER ARM – AUDI A1 HATCHBACK (8X1, 8XK). USE THE FOLLOWING PROCEDURE:

1 Secure the wheels with chocks.

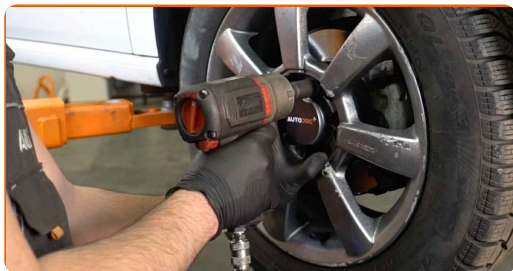


2 Loosen the wheel mounting bolts. Use wheel impact socket #17.



3 Raise the front of the car and secure on supports.

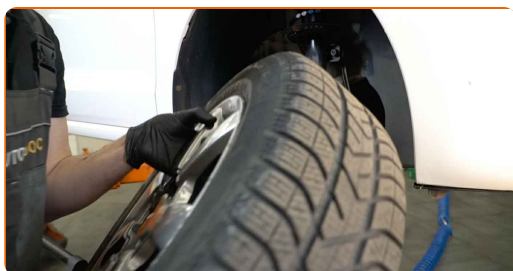
4 Unscrew the wheel bolts.



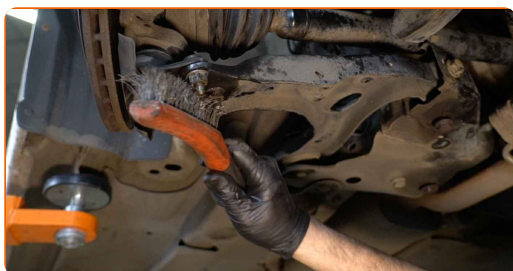
Replacement: front lower arm – AUDI A1 Hatchback (8X1, 8XK). AUTODOC recommends:

- To avoid injury, hold up the wheel when unscrewing the bolts.

5 Remove the wheel.



6 Clean all joints of the arm. Use a wire brush. Use WD-40 spray.

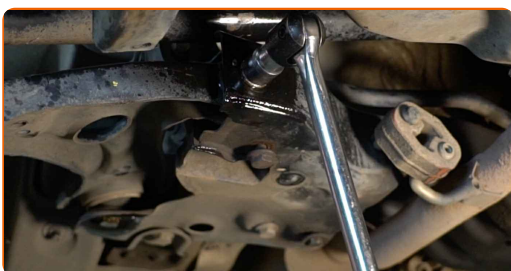


AUTODOC recommends:

- Replacement: front lower arm – AUDI A1 Hatchback (8X1, 8XK). After applying the spray, wait a few minutes.
- Wear protective goggles.

7

Unscrew the front arm fastener. Use a drive socket #18. Use a tap wrench.



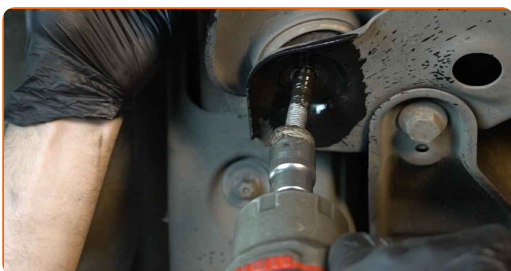
8

Unscrew the rear fastener connecting the control arm to the subframe. Use a combination spanner #18. Use a drive socket #18. Use a tap wrench.

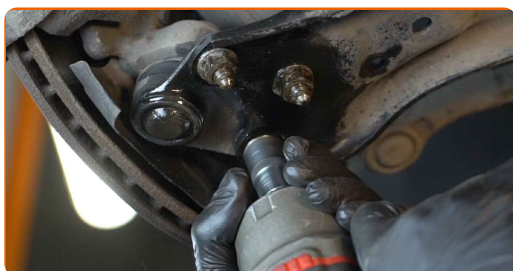


9

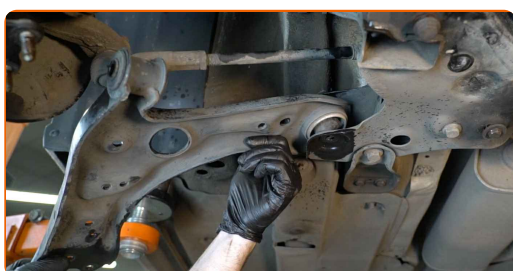
Remove the fastening bolts. Use a drive socket #18.



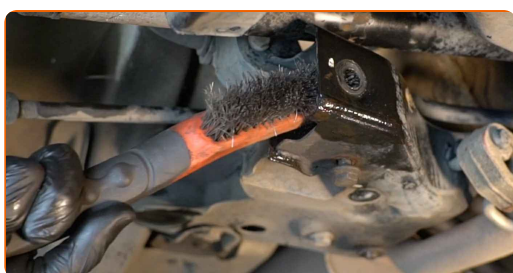
- 10** Unscrew the fastener connecting the ball joint to the suspension control arm. Use a drive socket #16. Use a tap wrench.



- 11** Remove the arm. Use a crowbar.



- 12** Clean the mounting seats and the thread of the suspension arm. Use a wire brush. Use WD-40 spray.



- 13** Install a new arm. Use a crowbar. Use a rubber mallet.

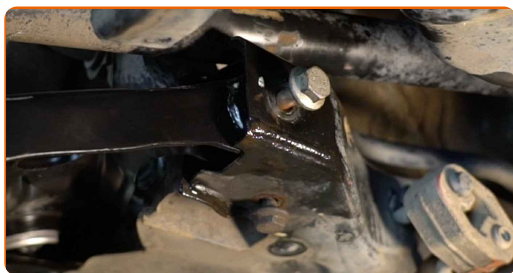


Replacement: front lower arm – AUDI A1 Hatchback (8X1, 8XK). Tip:

- During the installation process, use only new bolts and nuts.

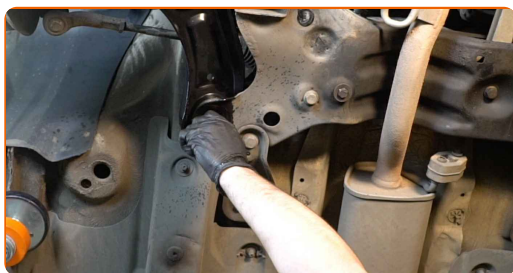
14

Install the front fastener of the arm. Use a combination spanner #18.



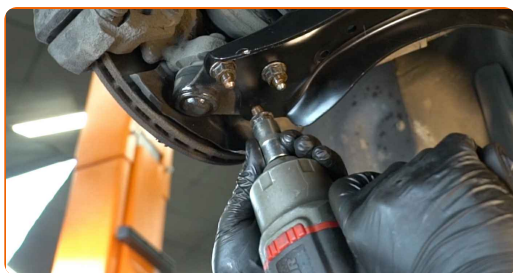
15

Install the rear fastener of the arm. Use a crowbar.



16

Screw the fasteners of the ball joint. Use a drive socket #16. Use a ratchet wrench.



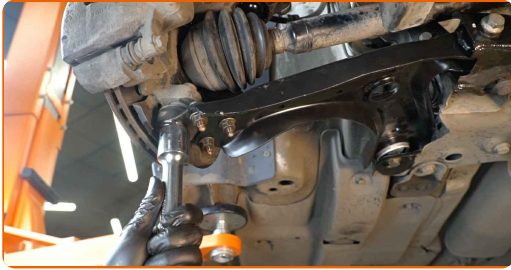
17

Screw the rear fastener connecting the control arm to the subframe. Use a combination spanner #18. Use a drive socket #18. Use a ratchet wrench.



18

Support the arm. Use a hydraulic transmission jack.



19

Tighten the front fastener connecting the control arm to the subframe. Use a drive socket #18. Use a torque wrench. Tighten it to 70 Nm torque. +90°

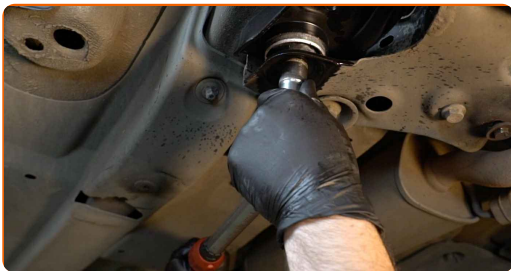


AUTODOC recommends:

- Important! Be sure to use new fasteners.

20

Tighten the rear fastener connecting the arm to the body subframe. Use a drive socket #18. Use a torque wrench. Tighten it to 70 Nm torque. +90°



AUTODOC recommends:

- Important! Be sure to use new fasteners.

21

Tighten the ball joint fastener. Use a drive socket #16. Use a torque wrench. Tighten it to 60 nm torque.



22

Remove the support from under the arm.



AUTODOC recommends:

- Replacement: front lower arm – AUDI A1 Hatchback (8X1, 8XK). Lower the transmission jack smoothly, without jerks, to avoid damaging components and mechanisms.

23

Treat all joints of the arm. Use copper grease.



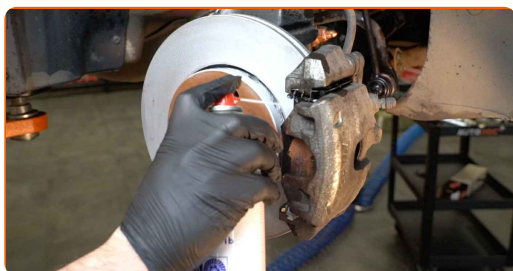
24

Treat the surface where the brake disc contacts the wheel rim. Use copper grease.



25

Clean the brake disk surface. Use a brake cleaner.



Replacement: front lower arm – AUDI A1 Hatchback (8X1, 8XK). Tip from AUTODOC:

- After applying the spray, wait a few minutes.

26

Install the wheel.

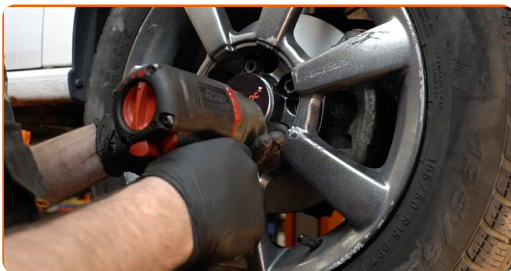


AUTODOC recommends:

- Warning! To avoid injury, hold the wheel while screwing in the fastening bolts on the car. AUDI A1 Hatchback (8X1, 8XK)

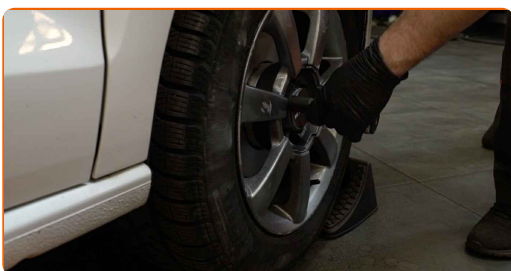
27

Screw in the wheel bolts. Use wheel impact socket #17.



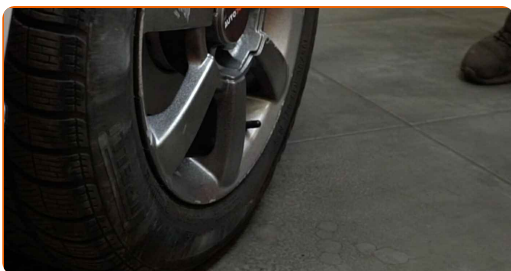
28

Lower the car and working in a cross order, tighten the wheel bolts. Use wheel impact socket #17. Use a torque wrench. Tighten it to 120 nm torque.



29

Remove the jacks and chocks.



WELL DONE! 

VIEW MORE TUTORIALS

AUTODOC – TOP QUALITY AND AFFORDABLE CAR PARTS ONLINE

AUTODOC MOBILE APP: GREAT DEALS AND CONVENIENT SHOPPING



+ AUTODOC

GET IT ON
Google Play

Download on the
App Store

Download

A GREAT SELECTION OF SPARE PARTS FOR YOUR CAR

CONTROL ARM: A WIDE SELECTION

(i) DISCLAIMER:

The document contains only general recommendations that may be useful for you when you perform repair or replacement work. AUTODOC shall not be liable for any loss, injury, damage of property occurring in the repair or replacement process due to incorrect use or misinterpretation of the provided information.

AUTODOC shall not be liable for any possible mistakes and uncertainties in this guide. The information provided is for information purposes only and cannot replace advice from specialists.

AUTODOC shall not be liable for incorrect or hazardous usage of equipment, tools and car parts. AUTODOC strongly recommends to be careful and observe the safety rules when performing repair or replacement works. Remember: usage of low quality auto parts does not guarantee you the appropriate level of road safety.

© Copyright 2023 – All the contents of this website, in particular texts, photographs and graphics, are protected by copyright. All rights, including reproduction, publication, editing and translation rights, are reserved by AUTODOC SE.