



How to change pollen
filter on **Opel Astra H**
saloon – replacement
guide

VIDEO TUTORIAL



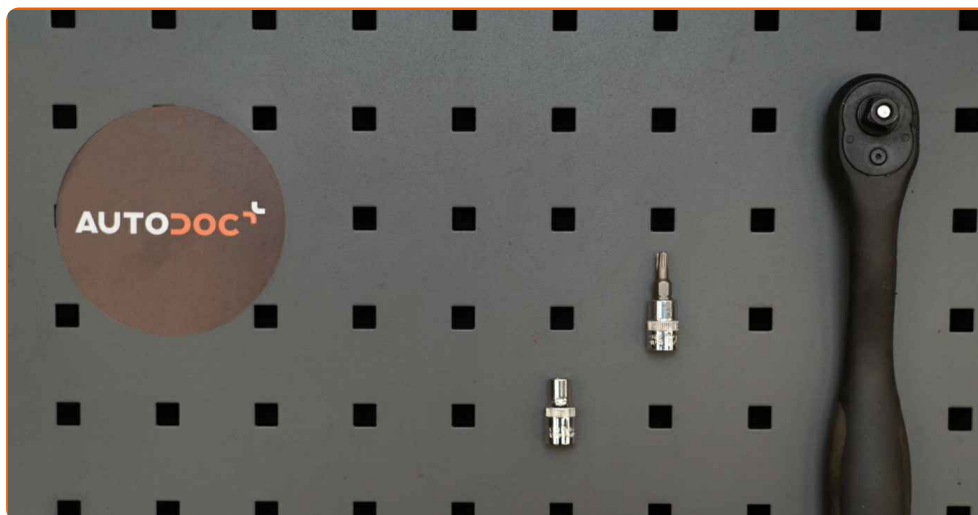
i Important!

This replacement procedure can be used for:

OPEL Astra H Caravan (A04) 1.6 LPG (L35), OPEL Astra H Caravan (A04) 1.4 LPG (L35), OPEL Astra G CC (T98) 1.2 16V (F08, F48), OPEL Astra G CC (T98) 1.6 (F08, F48), OPEL Astra G CC (T98) 1.6 16V (F08, F48), OPEL Astra G CC (T98) 1.8 16V (F08, F48), OPEL Astra G CC (T98) 2.0 16V (F08, F48), OPEL Astra G CC (T98) 1.7 TD (F08, F48), OPEL Astra G CC (T98) 2.0 DI (F08, F48), OPEL Astra G Caravan (T98) 1.2 16V (F35), OPEL Astra G Caravan (T98) 1.6 (F35), OPEL Astra G Caravan (T98) 1.6 16V (F35), OPEL Astra G Caravan (T98) 1.8 16V (F35), OPEL Astra G Caravan (T98) 2.0 16V (F35), OPEL Astra G Caravan (T98) 1.7 TD (F35), (+ 137)

The steps may slightly vary depending on the car design.

REPLACEMENT: POLLEN FILTER – OPEL ASTRA H
SALOON. TOOLS YOU MIGHT NEED:



- Drive socket # 5.5
- Torx bit T20
- Ratchet wrench

BUY TOOLS

Replacement: pollen filter – Opel Astra H saloon. AUTODOC experts recommend:

- Replace the cabin filter at least once every six months, in early spring and autumn seasons.
- Follow the terms, recommendations and requirements of the part operation provided by the manufacturer.
- If the air flow into the cabin has sharply reduced, replace the filter before a scheduled maintenance.
- Please note: all work on the car – Opel Astra H saloon – should be done with the engine switched off.

CARRY OUT REPLACEMENT IN THE FOLLOWING ORDER:

1

Move the passenger seat fully backwards.

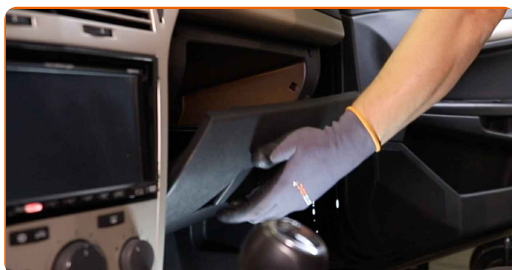


2

Spread a cloth under the cabin filter cover to protect the interior upholstery from getting dirty.

3

Open the glove box.



4

Unscrew the glove box fastening screws. Use Torx T20.



5

Remove the glovebox.

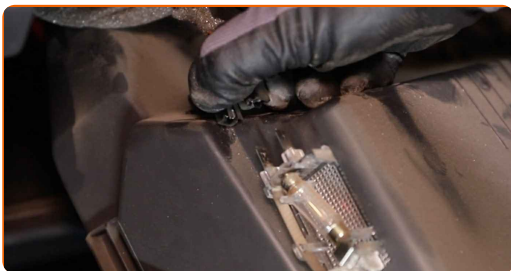


Replacement: pollen filter – Opel Astra H saloon. Tip from AUTODOC:

- Be careful to avoid damaging the glove compartment fasteners.

6

Unplug the glove box light connector.



7

Unscrew the fasteners of the passenger side kick panel.



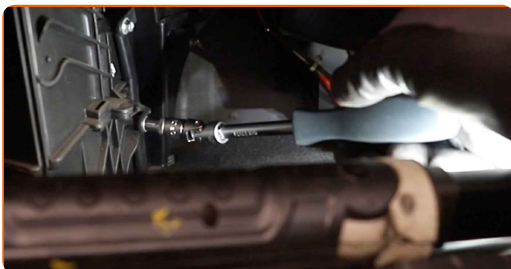
8

Remove the cover under the glove box.



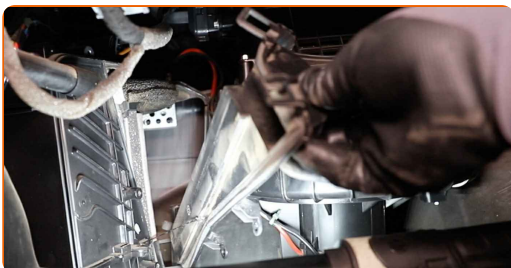
9

Unscrew the fasteners of the cabin filter housing cover. Use a drive socket #5.5. Use a ratchet wrench.



10

Remove the cabin filter cover.



11

Remove the cabin filter.

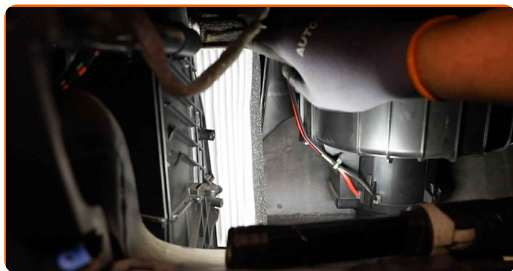


Replacement: pollen filter – Opel Astra H saloon. Tip:

- Do not attempt to clean and reuse the filter - it will affect the quality of air cleaning inside the car.

12

Install the cabin filter to its mounting seat.



Replacement: pollen filter – Opel Astra H saloon. Tip from AUTODOC:

- Follow the air flow direction arrow on the filter.
- Check out the correct location of the filter element. Do not skew.
- Attention! Use quality filters – Opel Astra H saloon.

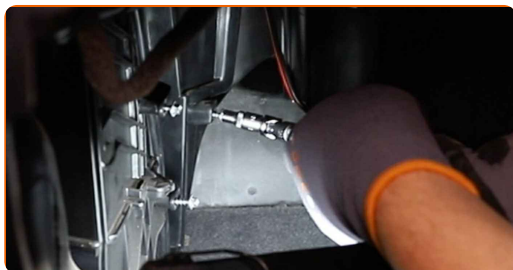
13

Install the filter cover.



14

Screw in the fasteners of the cabin filter housing cover. Use a drive socket #5.5. Use a ratchet wrench.



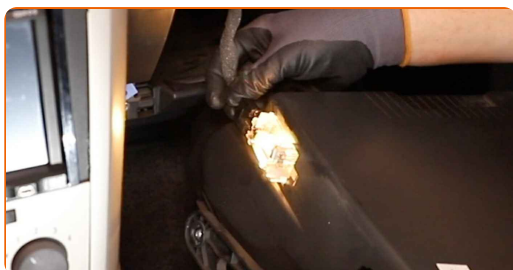
- 15** Install and secure the cover under the glove box.



- 16** Screw in the fasteners of the passenger side kick panel.



- 17** Plug in the glove box light connector.



- 18** Install the glove box.



- 19** Screw the glove box fastening screws. Use Torx T20.



20

Close the glove box.

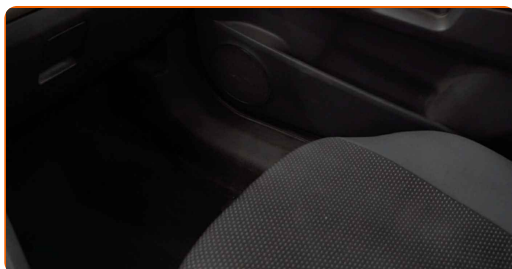


21

Remove the cloth.

22

Return the passenger seat to its initial position.

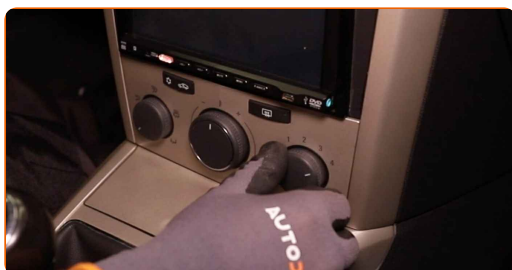


23

Switch on the ignition.

24

Switch on the air conditioning system. This is necessary in order to make sure that the component operates properly.



25

Switch off the ignition.

WELL DONE! 

VIEW MORE TUTORIALS

AUTODOC – TOP QUALITY AND AFFORDABLE CAR PARTS ONLINE

AUTODOC MOBILE APP: GREAT DEALS AND CONVENIENT SHOPPING



+ AUTODOC

GET IT ON
 Google Play

 Download on the
App Store

Download

A GREAT SELECTION OF SPARE PARTS FOR YOUR CAR

BUY SPARE PARTS FOR OPEL

POLLEN FILTER: A WIDE SELECTION

CHOOSE CAR PARTS FOR OPEL ASTRA H SALOON

POLLEN FILTER FOR OPEL: BUY NOW

**POLLEN FILTER FOR OPEL ASTRA H SALOON: THE BEST
DEALS & OFFERS**

DISCLAIMER:

The document contains only general recommendations that may be useful for you when you perform repair or replacement work. AUTODOC shall not be liable for any loss, injury, damage of property occurring in the repair or replacement process due to incorrect use or misinterpretation of the provided information.

AUTODOC shall not be liable for any possible mistakes and uncertainties in this guide. The information provided is for information purposes only and cannot replace advice from specialists.

AUTODOC shall not be liable for incorrect or hazardous usage of equipment, tools and car parts. AUTODOC strongly recommends to be careful and observe the safety rules when performing repair or replacement works. Remember: usage of low quality auto parts does not guarantee you the appropriate level of road safety.

© Copyright 2023 – All the contents of this website, in particular texts, photographs and graphics, are protected by copyright. All rights, including reproduction, publication, editing and translation rights, are reserved by AUTODOC SE.