



How to change pollen
filter on **ALPINA B3
Convertible (E36)** –
replacement guide

SIMILAR VIDEO TUTORIAL



This video shows the replacement procedure of a similar car part on another vehicle

Important!

This replacement procedure can be used for:
ALPINA B3 Convertible (E36) 3.0, ALPINA B3 Convertible (E36) 3.2

The steps may slightly vary depending on the car design.

This tutorial was created based on the replacement procedure for a similar car part on: BMW 3 Saloon (E36) 323i 2.5

REPLACEMENT: POLLEN FILTER – ALPINA B3 CONVERTIBLE (E36). LIST OF THE TOOLS YOU'LL NEED:



- Phillips screwdriver
- Flat screwdriver
- Clip removal tool

[Buy tools](#)

Replacement: pollen filter – ALPINA B3 Convertible (E36). Tip from AUTODOC experts:

- Replace the cabin filter at least once every six months, in early spring and autumn seasons.
- Follow the terms, recommendations and requirements of the part operation provided by the manufacturer.
- If the air flow into the cabin has sharply reduced, replace the filter before a scheduled maintenance.
- Please note: all work on the car – ALPINA B3 Convertible (E36) – should be done with the engine switched off.

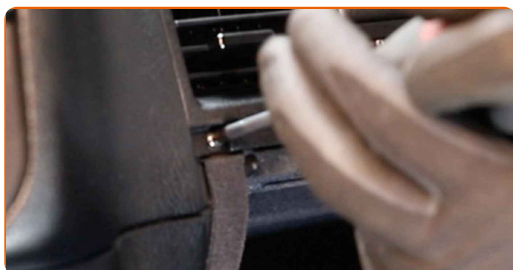
CARRY OUT REPLACEMENT IN THE FOLLOWING ORDER:

1 Move the passenger seat fully backwards.

2 Open the glove box.



3 Unscrew the glove box fastening screws. Use a Phillips screwdriver. Use a flat screwdriver.



4

Remove the air vent.



5

Unscrew the glove box fastening screws. Use a Phillips screwdriver. Use a flat screwdriver.



6

Unplug the glove box light connector.



7

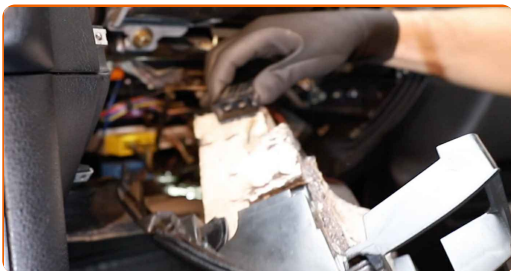
Remove the glovebox.



Replacement: pollen filter – ALPINA B3 Convertible (E36). Professionals recommend:

- Be careful to avoid damaging the glove compartment fasteners.

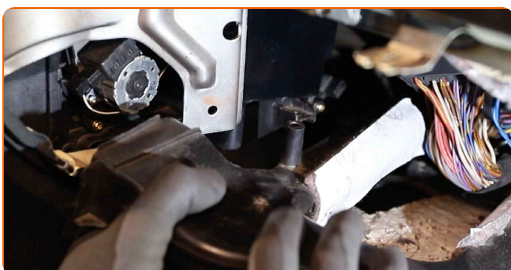
- 8 Unplug the glove box light connector.



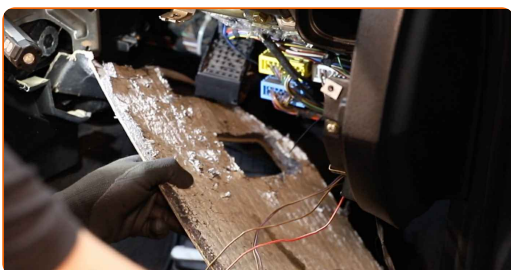
- 9 Remove the fasteners of the air duct housing. Use a clip removal tool.



- 10 Remove the air distribution housing assembly.



- 11 Remove the bottom cover of the glove box.



- 12 Remove the cabin filter housing cover. Use a Phillips screwdriver.



AUTODOC recommends:

- Replacement: pollen filter – ALPINA B3 Convertible (E36). To avoid damaging the part when removing it, do not use excessive force.

13

Remove the cabin filter.

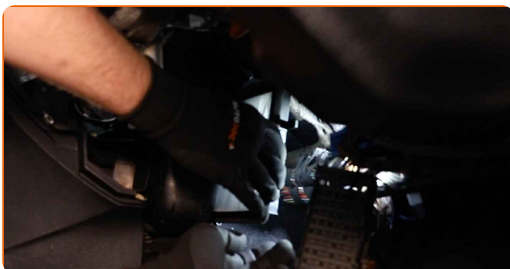


Replacement: pollen filter – ALPINA B3 Convertible (E36). AUTODOC experts recommend:

- Do not attempt to clean and reuse the filter - it will affect the quality of air cleaning inside the car.

14

Install the cabin filter to its mounting seat. Make sure that the filter edge fits tight to the housing.

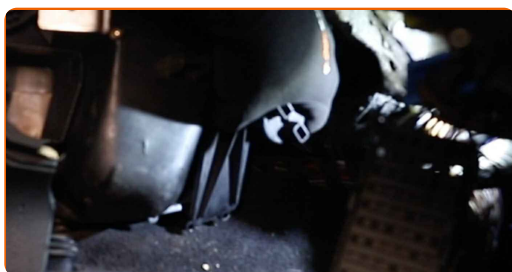


Replacement: pollen filter – ALPINA B3 Convertible (E36). Tip:

- Check out the correct location of the filter element. Do not skew.
- Follow the air flow direction arrow on the filter.
- Attention! Use quality filters – ALPINA B3 Convertible (E36).

15

Reinstall the cabin filter housing cover. Make sure you hear a click indicating that it is locked in place. Use a Phillips screwdriver.

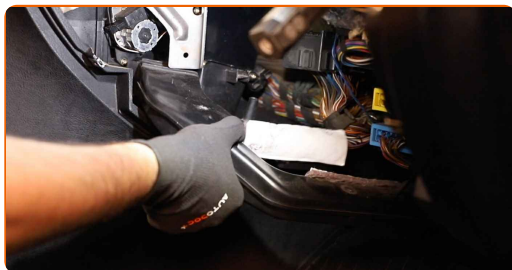


AUTODOC recommends:

- Replacement: pollen filter – ALPINA B3 Convertible (E36). To avoid damaging the part during installation, do not use excessive force.

16

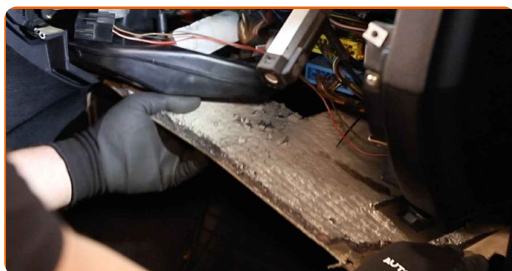
Reinstall the air distribution housing assembly.



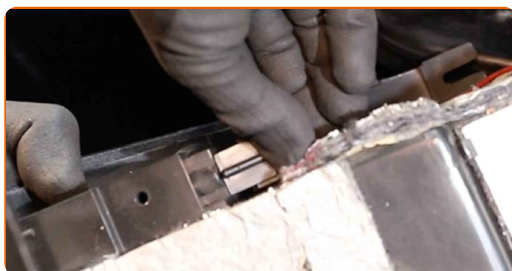
17

Install the air duct housing fasteners.

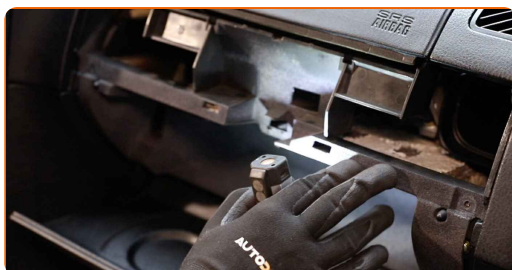
18 Install the glove box bottom cover.



19 Plug in the glove box light connector.



20 Install the glove box.



21 Screw the glove box fastening screws. Use a Phillips screwdriver.



22 Plug in the glove box light connector.



23

Install the air vent.



24

Screw the glove box fastening screws. Use a Phillips screwdriver.



25

Close the glove box.



26

Return the passenger seat to its initial position.

27

Switch on the ignition.

28

Switch on the air conditioning system. This is necessary in order to make sure that the component operates properly.

29

Switch off the ignition.

WELL DONE! 

VIEW MORE TUTORIALS

AUTODOC – TOP QUALITY AND AFFORDABLE CAR PARTS ONLINE

AUTODOC MOBILE APP: GREAT DEALS AND CONVENIENT SHOPPING



+ AUTODOC

GET IT ON
Google Play

Download on the
App Store

Download

A GREAT SELECTION OF SPARE PARTS FOR YOUR CAR

POLLEN FILTER: A WIDE SELECTION

DISCLAIMER:

The document contains only general recommendations that may be useful for you when you perform repair or replacement work. AUTODOC shall not be liable for any loss, injury, damage of property occurring in the repair or replacement process due to incorrect use or misinterpretation of the provided information.

AUTODOC shall not be liable for any possible mistakes and uncertainties in this guide. The information provided is for information purposes only and cannot replace advice from specialists.

AUTODOC shall not be liable for incorrect or hazardous usage of equipment, tools and car parts. AUTODOC strongly recommends to be careful and observe the safety rules when performing repair or replacement works. Remember: usage of low quality auto parts does not guarantee you the appropriate level of road safety.

© Copyright 2023 – All the contents of this website, in particular texts, photographs and graphics, are protected by copyright. All rights, including reproduction, publication, editing and translation rights, are reserved by AUTODOC SE.